



BONT

Technologies Nusantara

COMPANY PROFILE

PT. BONT TECHNOLOGIES NUSANTARA

AUTOMATION CONTROL SOLUTIONS

www.bonth-technus.com



AUTOMATION CONTROLS

Giving More Than
Energy

PT. BONT TECHNOLOGIES NUSANTARA

Contents

01 OVER VIEW

Legality
Certificates
About Us
Vision & Mission
Our Culture
Our Brand
Branch Office
Our Warehouse
Our Workshop
Core Business
Why Must BONT

02 PRODUCTS & SERVICES

Industrial Automation System
Building Automation System
Internet Of Thing (IoT)
Smart Water Pump Systems
Programmable Logic Control (PLC)
Instrumentations

03 OUR CLIENTS

BONT
Technologies Nusantara



LEGALICY & CERTICATED

Nama Perusahaan : PT. BONT TECHNOLOGIES NUSANTARA
Alamat : Jl. Danau Sunter Utara
Komplek Rukan Sunter Permai Blok C No.9
Sunter, Jakarta Utara 14350
Akta Notaris : No.24/ 24 April 2019
Notaris : Adiaty Hadi, SH. No.C649.HT.03.02
SIUP : 487/1/IU/PMA/2018
NIB : 81702115032596
SPPKP : S-108 PKP/WPJ-21/KP.0803/2018
NPWP : 83.766.856.5-048.000



INTRODUCTION

PT. BONT TECHNOLOGIES NUSANTARA (BONT) is a Domestic Investment Company in Indonesia. Was established in early 2018, specializing *ELECTRICAL & AUTOMATION CONTROL SYSTEMS* in integrating, process control and monitoring solution via IOT (Internet Of Technologies).

Our expertise and abilities from a system integrator perspective are extensive. As a system integrator company, we will provide you the best solutions in terms of connectivity, protection, and security.

With a view to partnership and creativity, we all staff and management of PT. BONT Technologies Nusantara hopes to serve customers to the compatible synergy and mutual benefit.

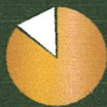
We always innovating deliver innovative electric energy equipment and has been cooperating with partners in several countries of the world (Asia Pacific & Europe) to always give priority to the quality of the products (high-quality), efficient in the use of (high-efficiency), leading-edge technology (high-technology), safety, and reliability as well as environmentally friendly (eco-friendly) in the material and its use.

VISION & MISSION



VISION

Excellent service and continuous customer care is the top priority, making sure that we provide complete products and services that makes our client comfortable and fully meets or exceeds their expectation from the usage of our products. To be the premier company with best quality after sales service in Indonesia. We always strive to contribute our knowledge and services to the business partners in the field of General Industri Automation, Powerplant, including the processing Instrument Control in Indonesia



MISSION

Do the right thing for betterment of our customers and our employee, always put Health, Safety & Environment in priority. In each of its operations, the company must stick to the rules applicable to economic interests, community, and environmental aspect. Help to prevent and to reduce the adverse impact on humans and the environment. Contribute to the economic and social development to the community and partner. To provide complete solutions and improve its range of products and services, in order to better serve its clients.

- To provide satisfaction to our clients in every aspect of our works
- To provide clients with high quality service and the top of line equipment
- To meet or better yet exceed the client's expectations in every equipment and services we will get them Mission

OUR CULTURE

C *OMMITMENT*

Selalu tepat janji dari kesepakatan.

A *DVANCED*

Prinsip yang mengedepankan sikap untuk selalu menjadi perusahaan yang unggul dan terdepan.

R *ELATIONSHIP*

Membangun kemitraan yang baik dengan seluruh pihak terkait.

I *TEGRITY*

Keutuhan & ketulusan yang diwujudkan melalui sikap memegang teguh amanah yang diberikan seraya sungguh-sungguh & konsekuen.

D *ISCIPLINE*

Taat pada aturan yang ditetapkan, serta selalu mempergunakan waktu, tenaga, dan pikiran dengan sebaik-baiknya dalam setiap pekerjaan & kegiatan, demi terciptanya sistem kerja yang profesional.

O *BSESSED*

Menjadi perusahaan Teknologi berkelas dunia dibidang Automation Industri.

A *CCOUNTABLE*

Sikap Terbuka, Jujur dan Bertanggung jawab.

B *ALANCE*

Menjaga keseimbangan semua aspek dengan mengedepankan pada tataran IQ (Intellectual Quotient), EQ (Emotional Quotient) & SQ (Spiritual Quotient).

E *XELENCE*

Selalu melaksanakan tugas & pekerjaan dengan sebaik-baiknya yang berorientasi pada hasil maksimal & sempurna.

R *ELIABLE*

Memiliki rasa tanggung jawab yang penuh terhadap apa yang dilakukan serta mampu berpikir positif dan cerdas.

S *TRONG*

Kuat, tangguh, & pantang menyerah dalam menghadapi segala tantangan dan rintangan.

I *NOVATION*

Mencari & menciptakan sesuatu yang lebih baik dalam segala kegiatan pekerjaan maupun menghasilkan karya produk dengan meningkatkan ilmu pengetahuan & kreatifitas.

H *ARMONIUS*

Sikap selalu menjaga keselarasan hubungan antar sesama & lingkungan dengan selalu menjunjung nilai-nilai saling bekerjasama (*Team Work*) dalam menyelesaikan segala hambatan, berenergis, beretika, berakhlak mulia, toleransi, menghargai & bermartabat, serta bermanfaat.

BONT Warehouse Supported by

LOCATION	TOTAL AREA
Jkt-Marunda	5,400m ²
Medan	1,344m ²
Surabaya	1,215m ²
Sampit	600m ²
Batam	530 m ²
Makassar	521 m ²
Samarinda	350 m ²
Pontianak	170m ²
Semarang	126m ²
Total	10,256m²



Our Workshop



Our Workshop Machinery



Milling Machine



Milling Machine



**Hydro Test
(High Pressure)**



**Hydro Test
(High Pressure)**



**Hydro Test
(Low Pressure)**



Lathe Machine



**CNC Drilling &
Tapping
Machine**



Milling Machine



Drilling Machine



**CNC Bar Feeder
Machine**



CNC Lathe Machine



CNC Polygon Machine



CNC Bar Feeder Machine

BONT
Technologies Nusantara

Our Brand

We always innovating deliver innovative electric energy equipment and has been cooperating with partners in several countries of the world (Asia Pacific & Europe) to always give priority to the quality of the products (high-quality), efficient in the use of (high-efficiency), leading-edge technology (high-technology), safety, and reliability as well as environmentally friendly (eco-friendly) in the material and its use




BONT
Technologies Nusantara

Supmea®


Haiwell

Schneider
Electric

OMRON

 **MITSUBISHI**

SIEMENS

YASKAWA


BTN

Core Business **BONT**

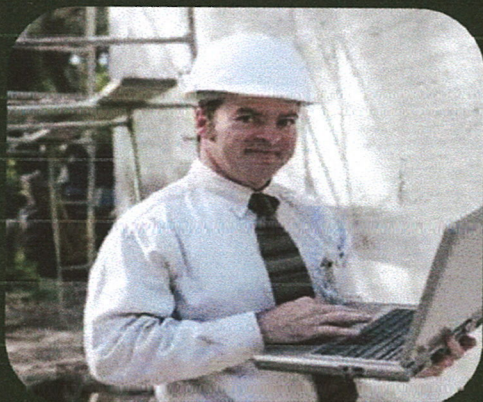
Technologies Nusantara



Consultant



Design & Planning



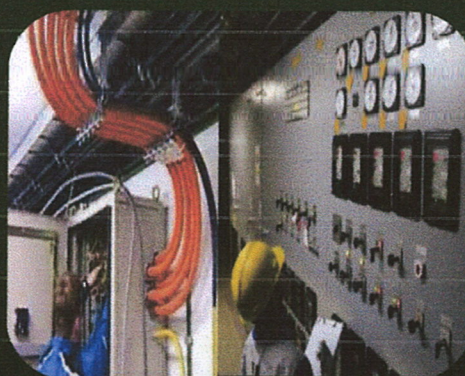
Engineering



Assembly



Installations



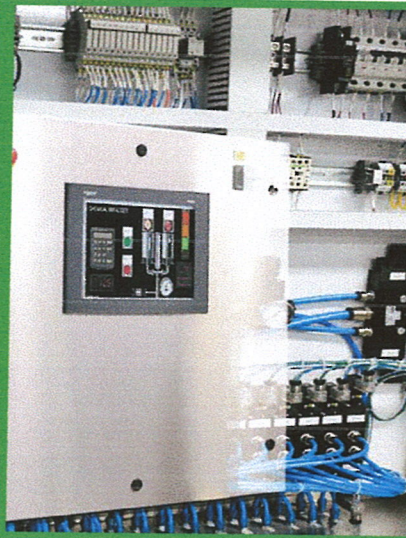
Services & Maintenance

Industrial AUTOMATION & MONITORING systems



PLC & HMI

Design and control the production process effectively and efficiently directly



CONTROL PANEL

Control and protection your process accurately



MONITORING

Process control & monitoring with SCADA interface, reach your utilities everywhere and anytime with realtime conditions



SYSTEM ENGINEERING

Total automation solutions for large-scale plants built with the highest-quality products



DRIVE & MOTION

Driving industry through a comprehensive offering of Drives, Sensor, Servo Motors and Controllers



ROBOTICS

A complete range of industrial robots to improve cycle times, product quality and to release workers from hazardous, heavy and dirty work environments

Industrial control systems



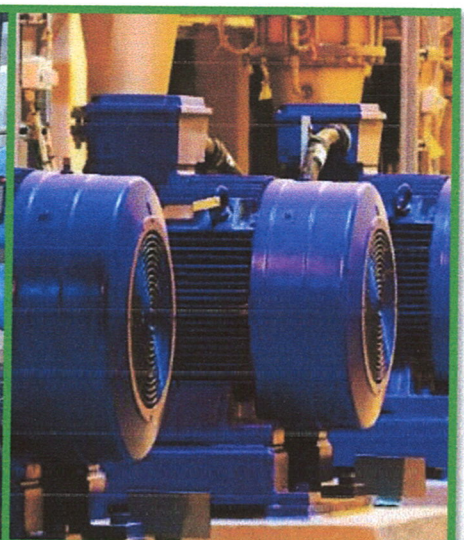
BOILER SYSTEM

Design and control the production process effectively and efficiently directly



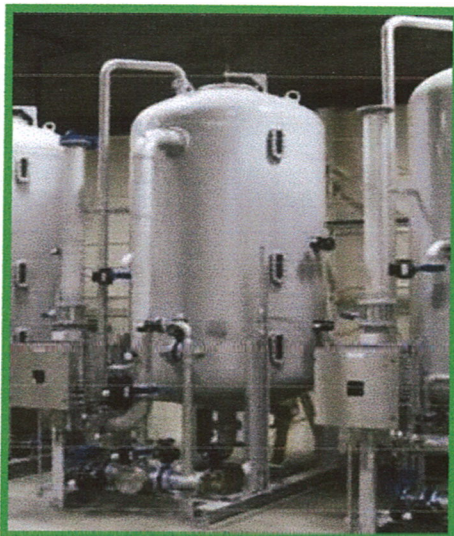
CONTROL VALVE

Control and protection your process accurately



INDUSTRIAL MOTOR

Reliable and highly efficient industrial motor design and installation



TANK SYSTEM

Management station tank system on your process accurately



CONVEYOR SYSTEM

Quickly, effectively and efficiently produce your production output



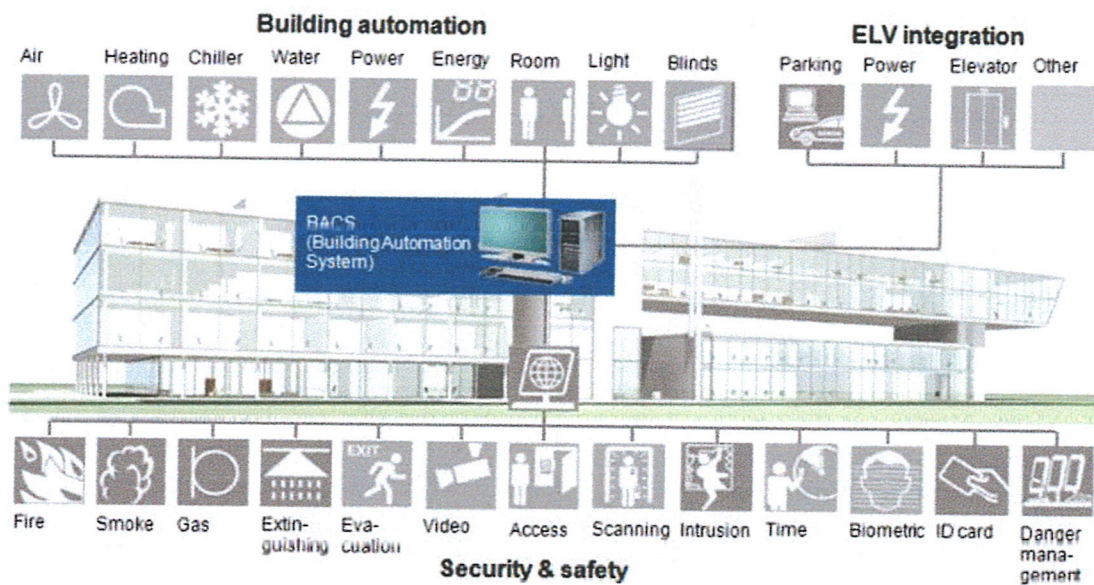
INSTRUMENTATION

Accurate calibration to produce good quality and standardized production

BUILDING AUTOMATION systems (BAS)

That with BAS (Building automation system) we can carry out automatic control over all aspects of utility, energy (energy saving), as well as security and safety of the building.

PT Bont Technologies Nusantara, can provide design, installation, product sales and consulting services for the manufacture of the required Building automation system (BAS)



System Intergration makes your building intelligent

We understand the challenges facing many building owners today as they require a variety of facility systems to work together to make their buildings intelligent and smart. Our system Integration helps your building increase energy efficiency, reduce operating costs, and deliver outcomes for the building's occupants

Transform your assets into competitive and sustainable

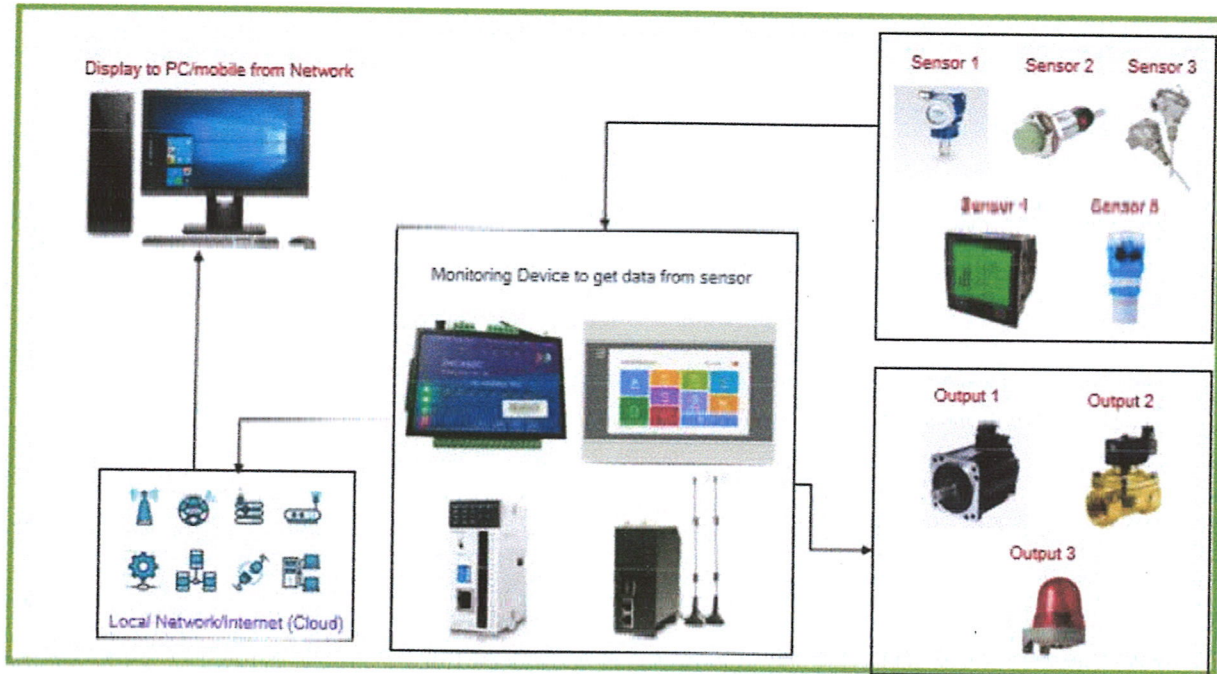
Energy efficiency buildings are on everyone's mind today. Energy solutions offered by BONT are the solutions for building owners who want to transform their assets into competitive and sustainable

Occupant required smart working environment

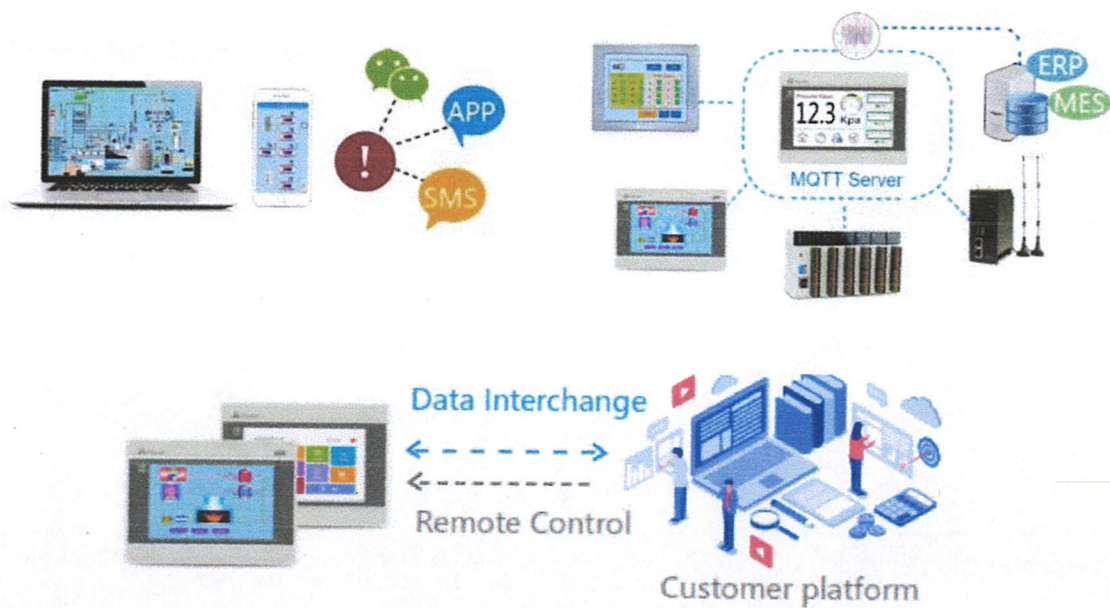
Indoor environmental factors such as air quality, thermal comfort and lighting play important roles in an occupant's productivity. BONT helps create smart working environments that enhance their performance and engagement.

INTERNET OF THING (IOT)

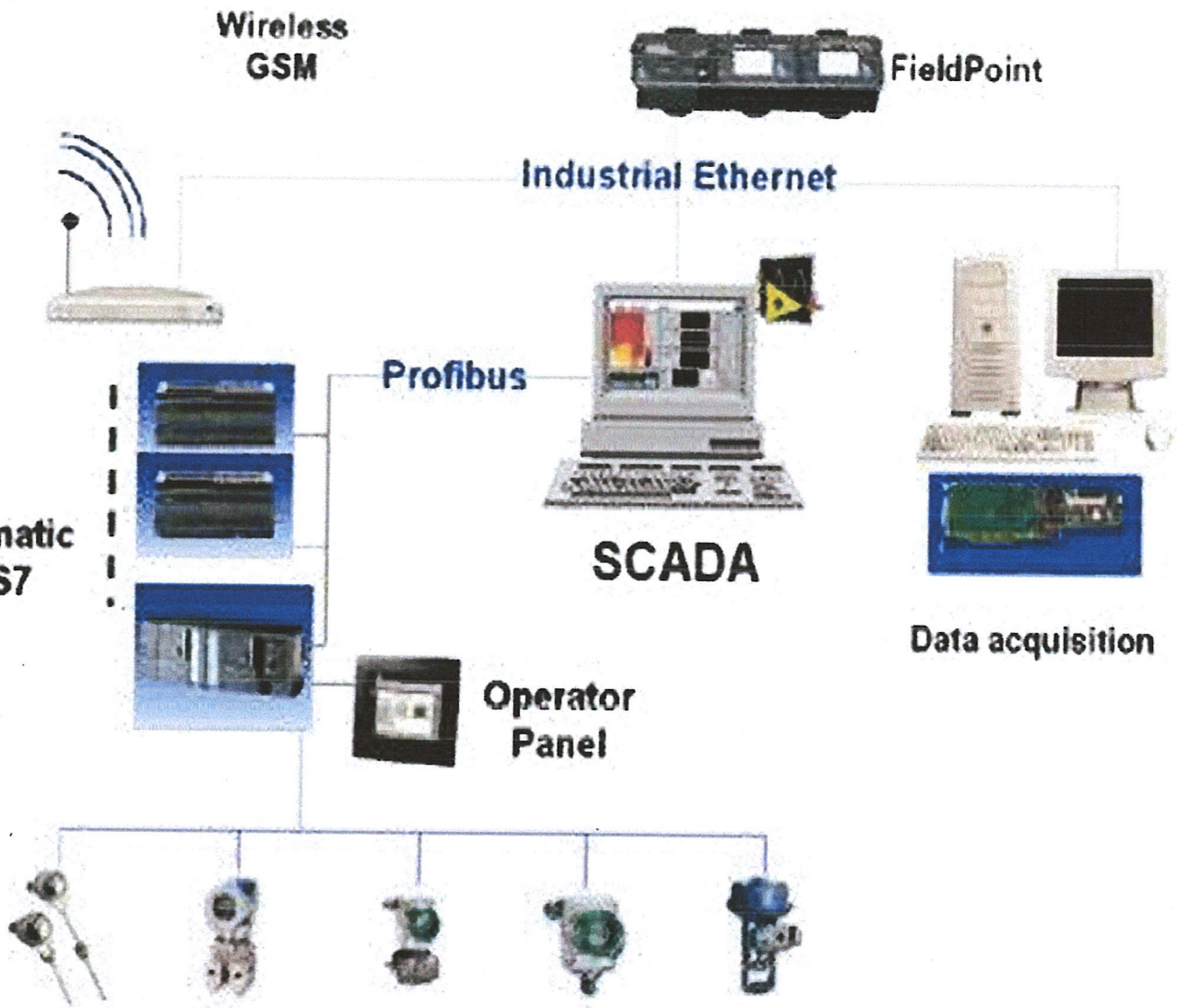
IOT Monitoring System



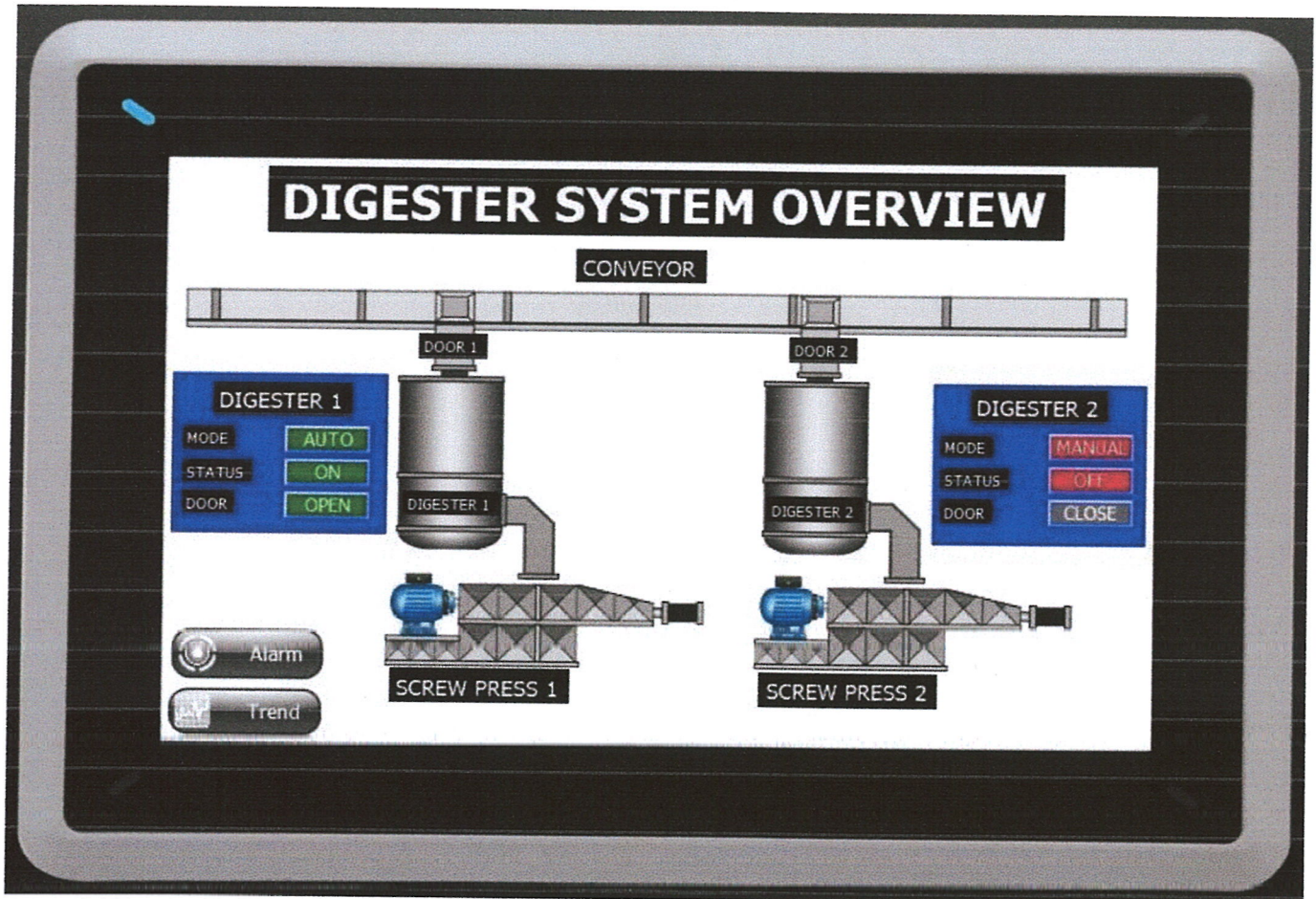
Integrated HMI, IoT gateway and DTU into one, reducing hardware cost & space.
Easier to use, cost-effective.



SCADA System



Implementation of SCADA System



Digester control system is used to prevent overload on motor digester. Also to control the sequence of filling the fruit into the digester tank. The working principle of the digester control system is based on current sensors on the motor digester. This sensor will read and send the amperage value to PLC, which will be interlocked with open close of control gate.

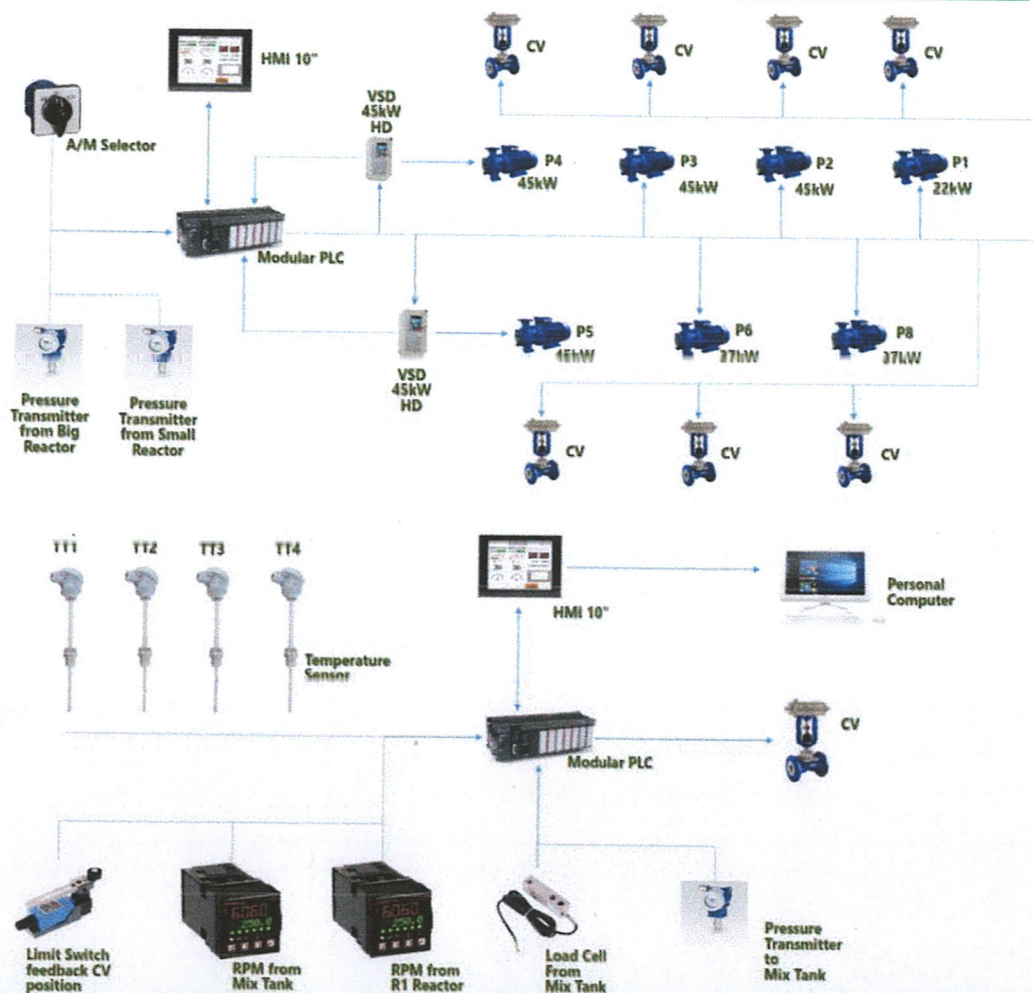
MAIN PUMPING STATION

Complete solutions for **refurbishment** or all-new projects

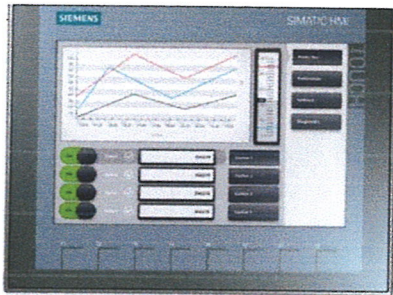
- Water Supply System
- Control Pump & Valve
- Drainage System
- Hot & Cold Water System
- Water Treatment System
- Drinking Water System
- Waste Water Piping
- Sewage Treatment
- Water Meter
- Septic Tank
- Deep Weel
- Piping Installation

BONT
Technologies Nusantara

AUTOMATION & MONITORING PUMP



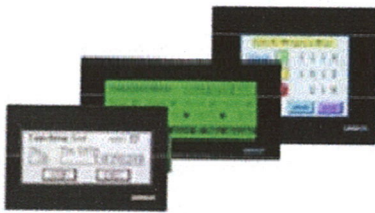
HUMAN MACHINE INTERFACE (HMI)



HMI SIEMENS



HMI MITSUBISHI



HMI OMRON



HMI HAIWELL



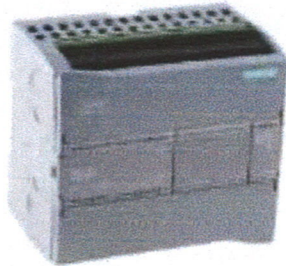
HMI YASKAWA



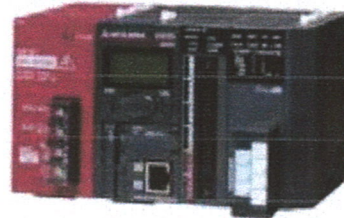
HMI WEINTEK

PLC (Programmable logic controler)

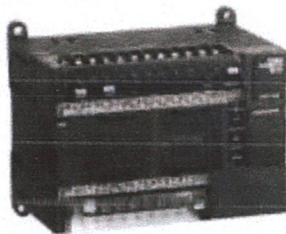
PLC SIEMENS



PLC MITSUBISHI



PLC OMRON



PLC HAIWELL



PLC DELTA



PLC LS



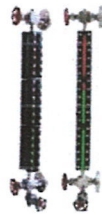
INSTRUMENTATIONS

LEVEL GAUGE

REFLEX LEVEL GAUGE



BI COLOR LEVEL GAUGE



MAGNETIC LEVEL GAUGE



TUBULAR LEVEL GAUGE



GAUGE GLASS & PACKING



TRANSMITTER

FLOW TRANSMITTER



PRESSURE TRANSMITTER



TEMPERATURE TRANSMITTE



LEVEL TRANSMITTER

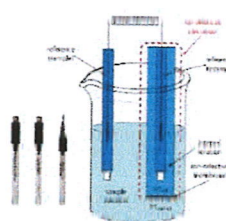


WATER QUALITY

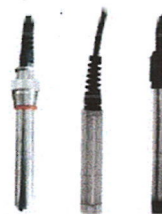
MULTIPARAMETER WATER
QUALITY METER



ION SELECTIVE ELECTRODE



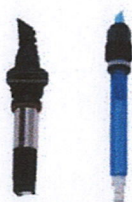
DISSOLVED OXYGEN (DO)



TURBIDITY, SUSPENDED SOLIDS,
SLUDGE, BLANKED SENSOR



FREE CHLORINE SENSOR



TDS SENSOR



AMMONIUM | NITRATE SENSOR



pH & ORP SENSOR



INSTRUMENTATIONS

WATER QUALITY



FUNCTION :

1. TURBIDITY CONTROLLER
2. OZONE CONTROLLER
3. SLUDGE BANKET CONTROLLER
4. SUSPENDED SOLIDS CONTROLLER
5. DUAL CHANNEL CONTROLLER
6. TDS CONTROLLER
7. DO CONTROLLER
8. CONDUCTIVITY CONTROLLER
9. FREE CHLORINE CONTROLLER

AIR QUALITY – GAS ANALYZER

INFRARED GAS ANALYZER



Combustion Efficiency
Analyzer



Portable NDIR Flue Gas
Analyzer

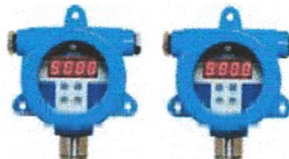


Wall Mounted Ringas
Analysis System

INFRARED GAS DETECTOR
Handheld Carbon Monoxide
Gas Detector TDB Series



INFRARED GAS TRANSMITTER
Infrared Carbon Dioxide
Gas Transmitter CRH Series



LEAK DETECTOR

ELECTROACOUSTIC WATER LEAK



PAM-T3 (rugged contact mic)



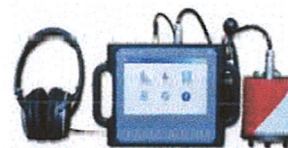
ULTRASONIC LEAK DETECTOR



PAM-H2 (tracer gas sensor)



ULTRASONIC LEAK DETECTOR



PAM-T3 (rugged contact mic)



PAM-H2 (tracer gas sensor)



[illegible]

Our Clients



PT. Wilmar Cahaya
Indonesia



PT. Astra Agro Lestari



PT. Taco Anugerah
Corporindo



PT. Adis Dimension
Footwear



PT. KAO Indonesia



PT. Surabaya Agung
Industry Pulp & Paper



PT. Multi Prima
Sejahtera



PT. Bridgestone
Indonesia



PT. Perusahaan Listrik
Negara



PT. Pembangkit Jawa
Bali



PT. Chevron Indonesia



PT. Sinarmas



PT. Semen Indonesia



PT. Petro Kimia Gresik



PT. Total Indonesia



PT. Bukit Asam



PT. Indofood Sukses Makmur



PT. Minamas Plantation



PT. Badak LNG



PT. Yupi Indo Jelly Gum

