



CONVEYOR EQUIPMENT | INSTALLATION | SERVICE | TRAINING | SOLUTIONS PROVIDER



PRODUCT BROCHURE

SCRAPERS | TRACKERS | PLOUGHS | SKIRTING

Worldwide Expertise

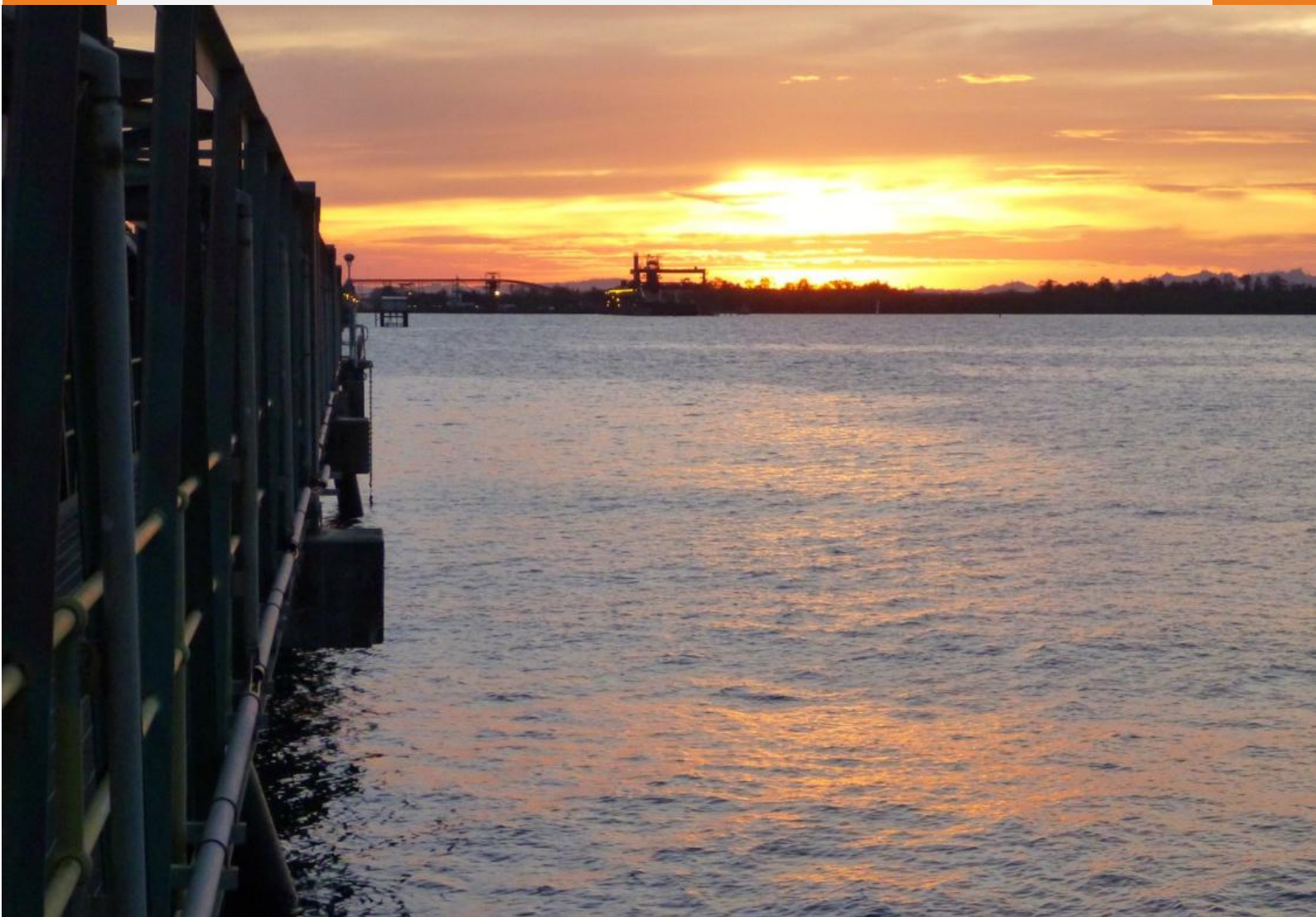
HOSCH is a German based manufacturing company specialising in conveyor belt cleaning and tracking equipment. Founded in 1975 by Mr Hans Otto-Schwarze in Recklinghausen, Germany.

We strive to maximise conveyor efficiency through innovative products, quality service and tailored solutions. Our vision is to be the first choice solutions provider in conveyor cleaning and spillage mitigation.

We pride ourselves on being an expert provider of conveyor cleaning and tracking products for the bulk material handling industry.

Belt cleaning and tracking issues can create unnecessary downtime, premature conveyor equipment failure, increased maintenance costs and safety risks.

Through continuous research and development and innovative product design our global team has over 40 year's experience, delivering quality German engineered products, backed up with specialist service.

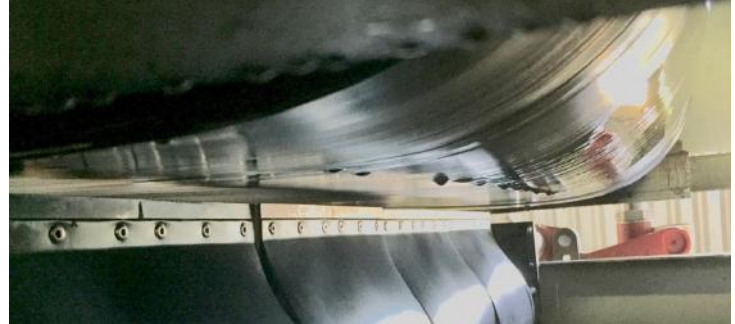




HOSCH in Operation

Solutions for big and small

HOSCH products are designed to withstand the harshest of conditions and our modular product range effectively suits the smallest, largest, slowest and fastest conveyors in the world. We are found in all bulk material applications and product types, with just a few listed below.



Aluminium

Bauxite

Cement

Ceramics

Coal

Fertiliser

Glasswork

Gol

Gypsum

Iron Ore

Lithium

Manganese

Nickel

Power Stations Salt

Sand & Gravel

Sugar Mills Timber

Industry Waste &

Recycling





HOSCH Measuring Method

Thanks to the **HOSCH** measuring method “carryback test”, which compares the performance of different cleaning systems and evaluates them economically based on different parameters, we are in a position to offer a reliable and verifiable analysis. It surprises most clients how much can be achieved with effective conveyor belt cleaning and how much HOSCH can reduce carryback on even their most difficult conveyors.

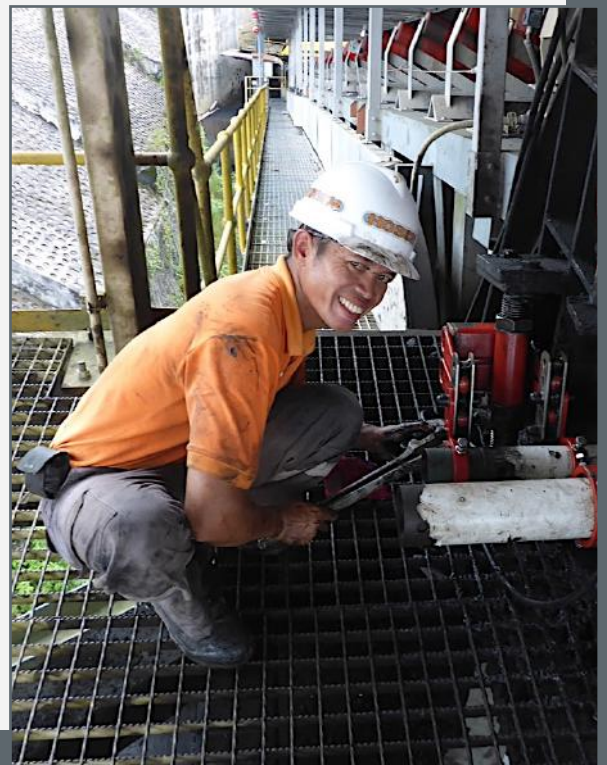


*Your advantage when using **HOSCH***

- ◆ Significant reduction of carryback
- ◆ Occupational safety
- ◆ Lower operating costs
- ◆ Security of investment

We don't just fight the symptoms...

... but strike to find the perfect solution for your plant by understanding your complete conveyor system. This is the only way we are able to offer you longer lasting and more reliable products. This is the reason why a comprehensive inspection of your conveyor system performed by HOSCH technicians with no obligation to you at the beginning of our cooperation is an absolute must. Subsequently, HOSCH will send you a qualified recommendation on how to optimise your material handling, a service unequalled by any of our competitors. Naturally, we will also consider all other plant issues of importance, such as belt tracking and spillage throughout the plant.

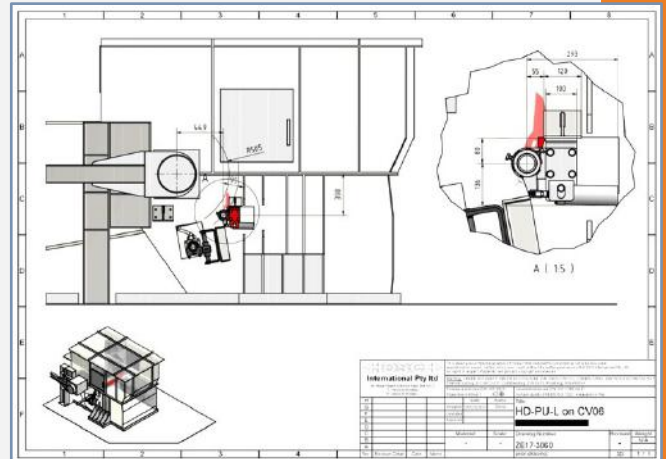


Tailored Engineered Solutions

Every conveyor is different and not every scraper installation is straight forward. Our dedicated Engineering Department will analyse your problematic conveyors to provide the optimum solution for all parties. Being an OEM supplier, we have the ability to customise products to suit specific requirements.

Our design makes sense!

HOSCH offers an installation planning service on the basis of CAD drawings (also available in 3D). We design our products to compliment your conveyor system. We also consider any required mounting brackets or other necessary adjustments to the existing structure.



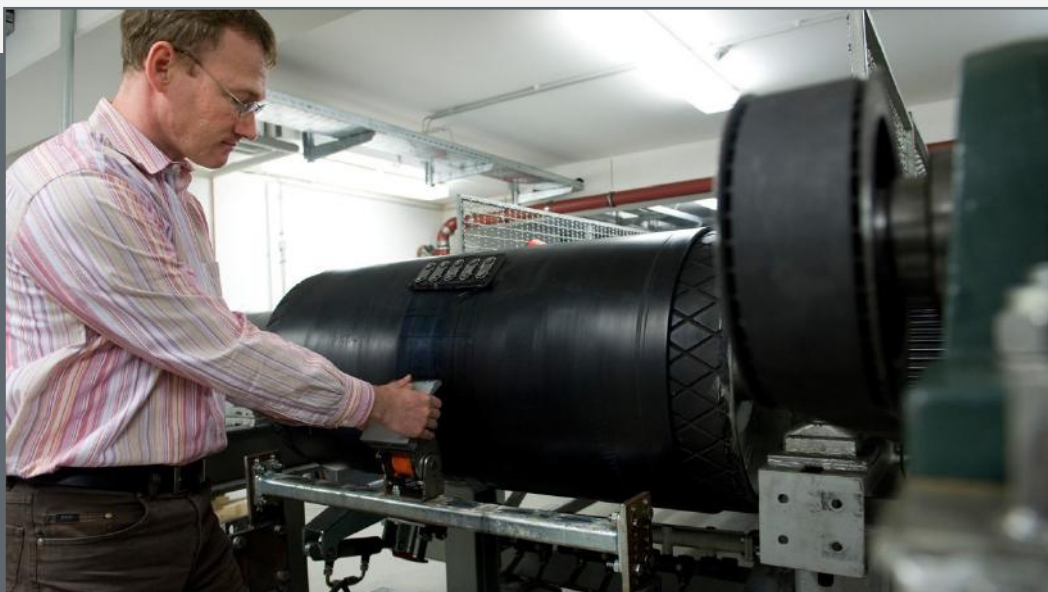
No break for the HOSCH

Think Tank

To live up to its own claim to be the world market leader in conveyor belt cleaning technology, HOSCH conduct extensive research and development.

At **HOSCH** Germany, the team is constantly busy with innovations. Using the latest simulation and calculation methods, the engineers develop new products and seek to continuously improve the existing technology

In the **HOSCH** experimental laboratory, the innovations are tested under the hardest conditions on two conveyor belt systems for subsequent use in the field. A high-speed camera helps to analyse in detail the complex relationships between the scraper and conveyor belt to fully optimise the systems.



Pre Cleaners

Conveyor belt systems transporting extremely sticky, muddy or difficult material present a big challenge for belt cleaning equipment. For these special operating conditions **HOSCH** advises to use a pre-cleaner (mostly installed directly on the head pulley) to lower the carryback layer to a manageable amount. Hosch pre cleaners are solid, long lasting with several safety features, making them extremely reliable even on the toughest conveyor belts.



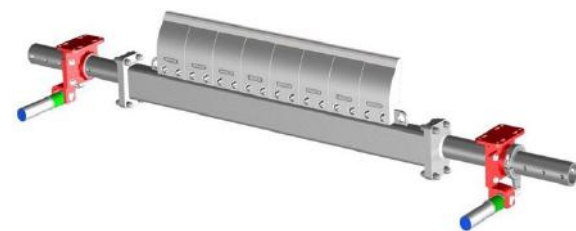
Belt width: **300-3200 mm**

Belt speed: up to **7.5 m/s**

Reverse operation: **Yes**

HD-PU PRE SCRAPER

- Safe and simple modular design
- Abrasion resistant polyurethane cleaning blocks
- Easy installation and maintenance
- Pre-tensioned constant pressure spring system
- Auto stop safety function at the end of the blade life



Belt width: **1000-3200 mm**

Belt speed: up to **7.5 m/s**

Reverse operation: **Yes**

HD-PU-S PRE SCRAPER

- Safe and simple modular design
- Abrasion resistant polyurethane cleaning blocks with tungsten tips
- Easy installation and maintenance
- Pre-tensioned constant pressure spring system
- Auto stop safety function at the end of the blade life



Belt width: **500-2400 mm**

Belt speed: up to **7.5 m/s**

Reverse operation: **Yes**

HD PRE SCRAPER

- Long lasting, reliable & robust
- 8 mm x 20 mm tungsten tips deliver unmatched blade life
- Simple & modular design
- Constant pressure spring system
- Safety deflection function with two pivot points



B6 MAIN SCRAPER or PRE SCRAPER

- Reliable with great cleaning performance
- 12 mm & 20 mm tungsten tips
- Positive & negative angles
- Reliable on mechanical belt splices up to 3 m/s
- Rubber torsion spring system
- Deflecting, anti-vibration function with constant tension

C MAIN SCRAPER

- High cleaning performance
- 12 mm & 20 mm tungsten tips
- Positive & negative angles
- Individual height adjustable modules
- Rubber torsion spring system
- Deflecting, anti-vibration function with constant tension

D MAIN SCRAPER

- High cleaning performance
- Simple to install & maintain
- 12 mm & 20 mm tungsten tips
- Positive & negative angles
- Individual height adjustable modules
- Rubber torsion spring system
- Deflecting, anti-vibration function with constant tension

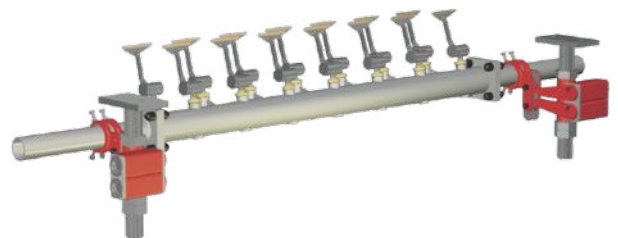
Main Cleaners

HOSCH main scrapers follow several unique design features like overlapping and contouring blades, positive cleaning angle and constant tensioning system, allowing them to be the most effective belt cleaner on the market. Unlike other scraper systems, **HOSCH** main scrapers can often achieve effective belt cleaning with just one main cleaner.



Belt width: **300-3200 mm**

Belt speed: up to **7.5 m/s** Reverse operation: **Yes**



Belt width: **300-3200 mm**

Belt speed: up to **7.5 m/s** Reverse operation: **Yes***



Belt width: **500 - 2200 mm**

Belt speed: up to **5.5 m/s** Reverse operation: **Yes***

* Runback / Disengaging devices available

Trackers

There are many different reasons for belt mistracking in conveyor belt systems. This problem often results in complete shutdown of the plant or damage to the conveyor belt and other components.

HOSCH offers a wide range of return and trough tracking systems for all conveyor belt widths and belt speeds.



Belt width: **400-3200 mm**
Belt speed: up to **5.5 m/s**
Reverse operation: **Yes (RR(G)I)**



Belt width: **400-2400 mm**
Belt speed: up to **7.5 m/s**
Reverse operation: **Yes (RRC)**



Belt width: **400-2400 mm**
Belt speed: up to **7.5 m/s**
Reverse operation: **Yes (RRC-V)**

RG1 RETURN TRACKER

- Cost effective, simple & reliable
- No side idlers
- Simple installation requiring minimal space
- Central pivot bearing for strong steering capabilities
- High friction lagging

RG2 & RC RETURN TRACKER

- Solid & reliable
- No side idlers
- 6-8 high quality bearings sealed for life
- Central pivot bearing for strong steering capabilities
- High friction lagging

RCV TROUGH TRACKER

- Solid & reliable
- No side idlers
- 4-8 high quality bearings sealed for life
- Central pivot bearing for strong steering capabilities
- High friction lagging



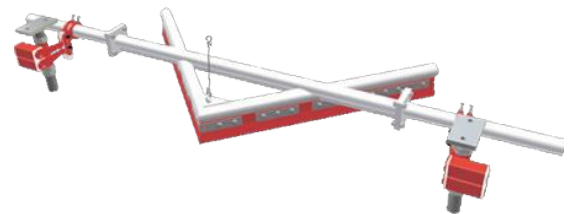
Ploughs & Skirting

HOSCH ploughs, or inner belt cleaners, use the same rubber torsion springs as our belt scrapers to maintain belt contact, absorb belt flap and reduce vibration. Deflector plates are optional and for larger belts, we offer designs with two midsections and four mounts.

The **HOSCH** skirting system, with individual sealing blocks, provides simple and effective sealing. It has proven to be a very safe and reliable system, even with extreme belt mistracking.

V PLOUGH

- Abrasion resistant polyurethane blocks
- Semi floating, anti-vibration mounting
- Modular & robust design to suit all stringers
- Custom deflector plates or hoods possible
- Four mounting points possible for larger conveyors



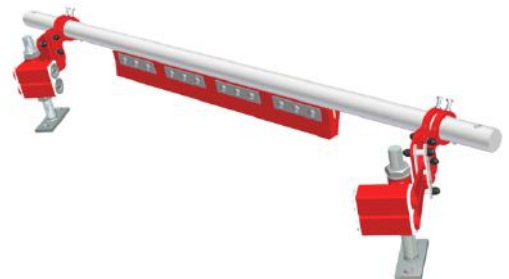
Belt width: **500-2400 mm**

Belt speed: up to **7.5 m/s**

Reverse operation: **No**

D PLOUGH

- Ideal for controlled product discharge on one side
- Minimal installation space required
- Abrasion resistant polyurethane blocks
- Semi floating, anti-vibration mounting
- Modular & robust design to suit all stringers
- Double wear blocks or deflector plates possible



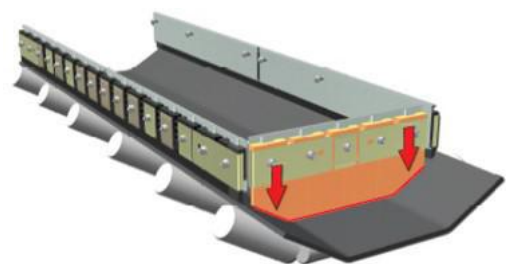
Belt width: **500-2400 mm**

Belt speed: up to **7.5 m/s**

Reverse operation: **Yes**

SKIRTING

- Individual, adjustable sealing blocks
- High wear resistant rubber & stainless steel parts
- Simple installation & maintenance
- Custom profiling to all chute designs
- Safe and reliable block material, mounting system and contact angle



Factors that influence cleaning efficiency

Cleaning Angle - Position of the blade to the belt travelling direction

Contact Force - Tension of the blade

Blade Profiling - Shaping and wear resistance of the blade tip



Scraper Blade

Over many years **HOSCH** perfected the complex manufacturing process of their tungsten blades and therefore HOSCH scraper blades offer:

- The biggest possible tungsten blades
- The most corrosion resistant tungsten tips on the current market, both chemically and mechanically

Positive Cleaning Angle



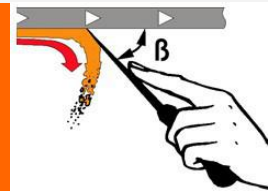
Negative Angle Principle

Insufficient cleaning efficiency, high pressure application and high belt wear



Bar Principle

Insufficient cleaning efficiency, medium pressure application and medium belt wear



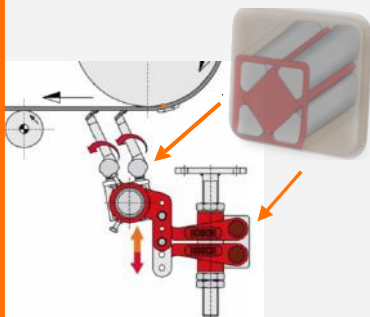
Positive Angle Principle

Total cleaning efficiency, minimum pressure application, complete residue removal and minimal belt wear

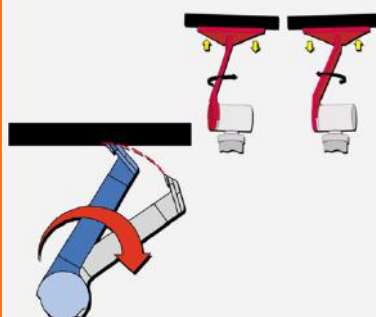
Contouring to the Belt Profile

Unique suspension system provides constant tension, dampening and safety

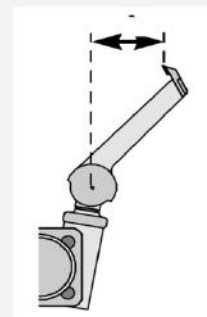
Rubber Torsion Springs



Self-Aligning Blades

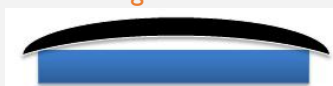


Pulling Stability



Generic Brand Scrapers

Single Blade



Lowest cleaning efficiency

HOSCH Pre - Scrapers

Multiple Blades



Mid-high cleaning efficiency

HOSCH Main - Scrapers

Multiple Overlapping Blades



Highest cleaning efficiency

With HOSCH - it couldn't be easier

We will provide technical support up to commissioning and beyond. We will ensure scrapers have achieved complete functionality and everything is running optimally.



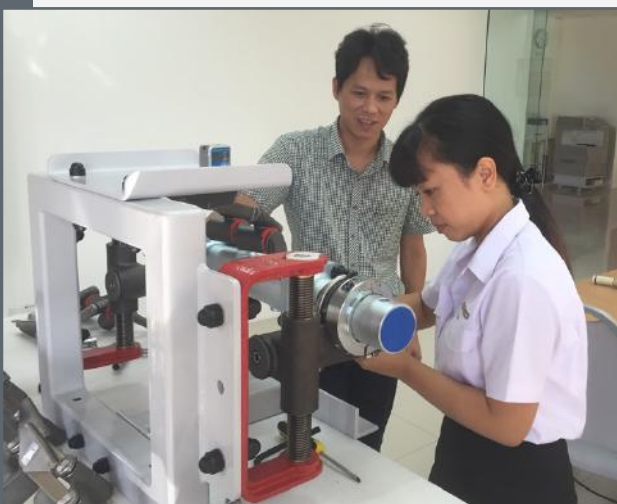
For optimal production and peace of mind, we offer regular inspections and maintenance service. We are familiar with the challenges faced by our customers with their specific plants and materials. Bulk material handling is our sole focus with vast experience and knowledge of belt cleaning and tracking products. You can be confident leaving the maintenance to **HOSCH** who can protect you against unpleasant surprises.

Everything at a glance

Which spare parts were needed during which period? What were the requirements for service hours in the individual areas of operation?

HOSCH compiles statistics for each customer and provides this information as a matter of course. This approach has many advantages, e.g. qualified monitoring of your costs and a good basis for convenient planning of the next upcoming maintenance.

You need a service concept explicitly tailored to your plant but do not want to have any deep involvement in spare parts management? No problem. **HOSCH** will be pleased to explain the system to you.



The technician has gone - what happens now?

The best technology performs perfectly only when it is operated correctly. HOSCH has developed its own **training program** based on its experience with the very complex technical issues related to conveyor belt cleaning.

The training covers both the basics of conveyor belt cleaning and the optimum integration of a scraper into the belt conveyor system. Training sessions are available at the **HOSCH** office in Balikpapan or onsite.



PT. HOSCH Technology Indonesia

An aerial photograph of a city skyline at sunset. The sky is a mix of orange, yellow, and blue. Several tall skyscrapers are visible, with one particularly prominent on the left. The city below is densely packed with buildings and roads. A large, circular road interchange is visible in the foreground.

PT. HOSCH Technology Indonesia

your competent partner for Belt Cleaning Systems

PT. HOSCH Technology Indonesia

Jalan MT Haryono, Bukit Damai Indah Blok C1 No. 33,
Balikpapan, Kalimantan Timur - 76114
Indonesia

PT. Advanced Technology Solution

Jalan Pahlawan Seribu, Ruko Tol Boulevard E.11,
BSD City Tangerang, Banten - 15322
Indonesia