



**PT ALPHA SOLUSI ENERGI**

*Your reliable mechanical drives & energy solutions partner*

## Company Profile

Who We Are

Vision, Mission, Value

Our Expertise

A company with focus in the field of mechanical drives, power transmission, and electrical drives.



**PT ALPHA SOLUSI ENERGI**  
*Your reliable mechanical drives & energi solutions partner*

Our team have many years of experience in the successful handling of mechanical drives, power transmission, and electrical drives within regions of the country for replacement, service, extension, as well as new projects

#### Vision

**Engineering, Services, & Distribution Company with highly dedicated to the advancement and mutual benefit of all parties**

#### Mission

**Providing the best service, support, & solutions to customers in terms of product quality and expertise in our field**

#### Value

- **Customer First**
- **Quality beyond Quantity**
- **Cooperation & Coordination**
- **Dedications**

# Who We Are

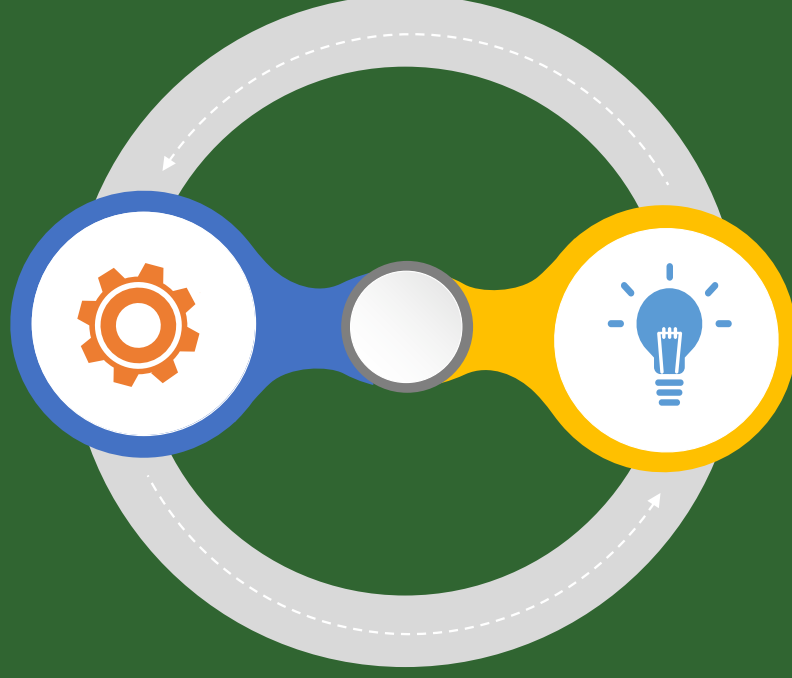
Vision, Mission, Value

## Our Expertise



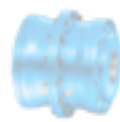
### Mechanical

- Gearbox
- Geared Motor
- Couplings



### Electrical

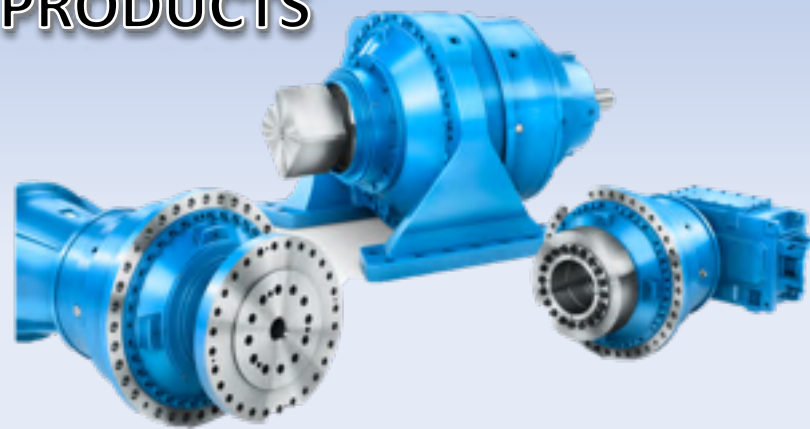
- Motor
- Inverter
- Electrical Substation



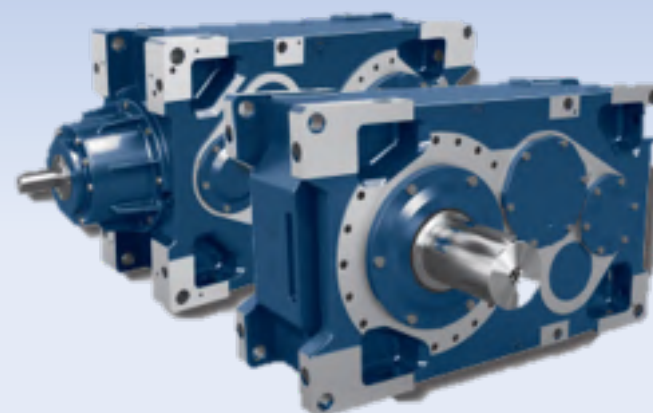
# FLENDER

## OUR PRODUCTS

Gearbox



Power Range : Up to 7,000 kW  
Torque Range : 450 – 5,450 kNm  
Ratio Range : 45:1 – 110:1  
Various Design  
Various Input Design  
Various Output Design  
Various Mounting



Power Range : 1.5 – 4000 kW  
Torque Range : 15 – 280 kNm  
Ratio Range : 5.54:1 – 30,000:1  
Helical Gearbox  
Bevel Helical Gearbox  
Various Design  
Various Input Design  
Various Output Design  
Various Mounting





## OUR PRODUCTS



### Helical gear units

Foot or flange mounted

- Long life, low-maintenance
- Optimum sealing
- UNICASE housing

|       |                      |
|-------|----------------------|
| Sizes | 11                   |
| kW    | 0.12 – 160           |
| Nm    | 10 – 26,000          |
| i     | 1.35:1 – 14,340.31:1 |



### 2/3-stage bevel gear units

- Foot mounted, flange mounted or face mounted
- Hollow or solid shaft
- UNICASE housing

|       |                      |
|-------|----------------------|
| Sizes | 11                   |
| kW    | 0.12 – 200           |
| Nm    | 180 – 50,000         |
| i     | 8.04:1 – 13,432.68:1 |



## OUR PRODUCTS



### Parallel shaft gear units

- Foot mounted, flange mounted or face mounted
- Hollow or solid shaft
- Compact design
- UNICASE housing

|       |                     |
|-------|---------------------|
| Sizes | 15                  |
| kW    | 0.12 – 200          |
| Nm    | 110 – 100,000       |
| i     | 4.03:1 – 6,616.79:1 |

### Helical worm gear units

- Foot mounted, flange mounted or face mounted
- Hollow or solid shaft
- UNICASE housing

|       |                     |
|-------|---------------------|
| Sizes | 6                   |
| kW    | 0.12 – 15           |
| Nm    | 94 – 3,090          |
| i     | 4.40:1 – 7,095.12:1 |





## OUR PRODUCTS



### 2-stage bevel gear units (Catalogue G1000, G1014)



- Foot mounted, flange mounted or face mounted
- Hollow or solid shaft
- UNICASE housing

|       |               |
|-------|---------------|
| Sizes | 6             |
| kW    | 0.12 – 9.2    |
| Nm    | 50 – 660      |
| i     | 3.03:1 – 70:1 |

### SMI worm gear units (Catalogue G1035)



- Smooth surfaces
- Lubricated for life

|       |                     |
|-------|---------------------|
| Sizes | 4                   |
| kW    | 0.12 – 4.0          |
| Nm    | 21 – 427            |
| i     | 5.00:1 – 3,000.00:1 |

### NORDBLOC.1 helical gear units (Catalogue G1000, G1012)



- Foot or flange mounted
- Die-cast aluminium housing
- UNICASE housing
- Industry standard dimensions

|       |                   |
|-------|-------------------|
| Sizes | 13                |
| kW    | 0.12 – 37         |
| Nm    | 30 – 3,300        |
| i     | 1.07:1 – 456.77:1 |

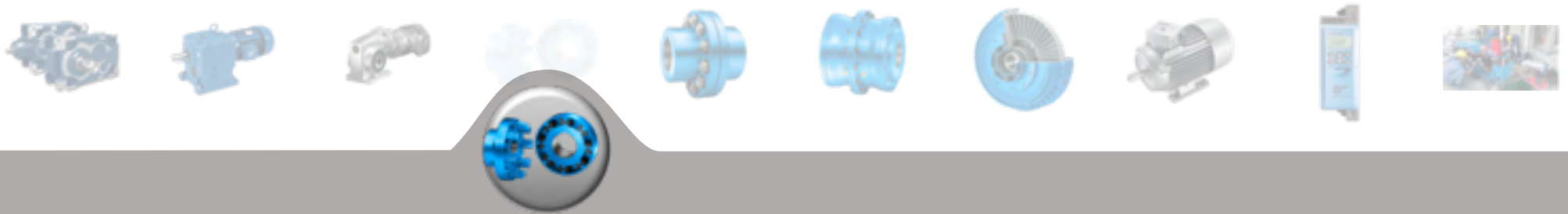
### SI worm gear units (Catalogue G1035)



- Modular
- Universal mounting
- Lubricated for life

|       |                     |
|-------|---------------------|
| Sizes | 5                   |
| kW    | 0.12 – 4.0          |
| Nm    | 21 – 427            |
| i     | 5.00:1 – 3,000.00:1 |



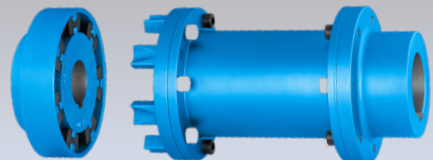
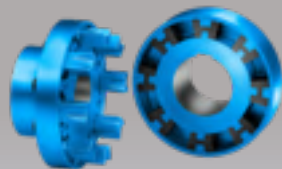


# OUR PRODUCTS

## FLENDER

### Couplings

### Flexible Coupling

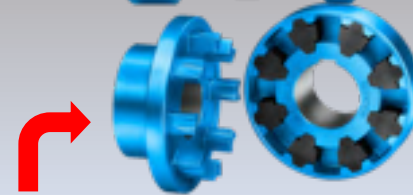
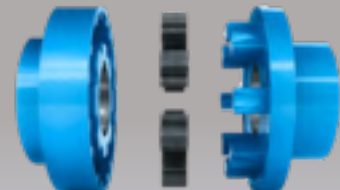
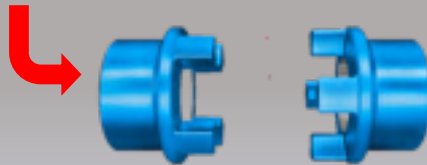


#### N-EUPEX PIN COUPLING

- Damping shaft coupling that can be used universally to compensate for shaft misalignment
- Nominal torque range from TKN = 12 Nm up to 85,000 Nm with 23 sizes
- Temperature range from  $-50^{\circ}\text{C}$  to  $+100^{\circ}\text{C}$

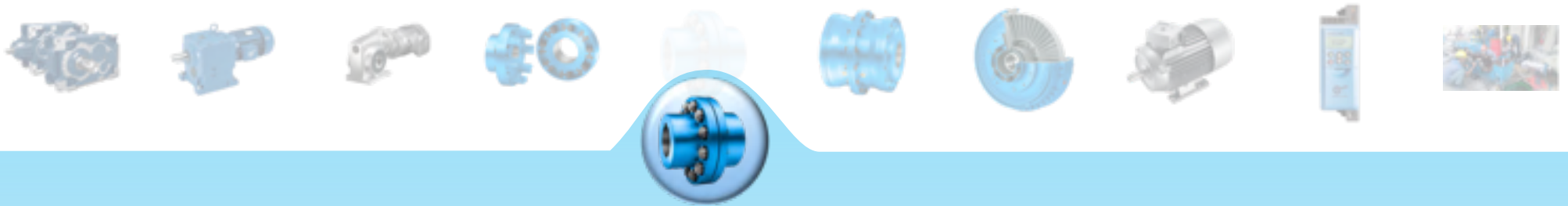
#### N-BIPEX CLAW COUPLING

- Damping shaft coupling that can be used universally to compensate for shaft misalignments
- Nominal torque range from TKN = 12 Nm up to 4,650 Nm with 10 sizes
- Temperature range: from  $-50^{\circ}\text{C}$  to  $+100^{\circ}\text{C}$



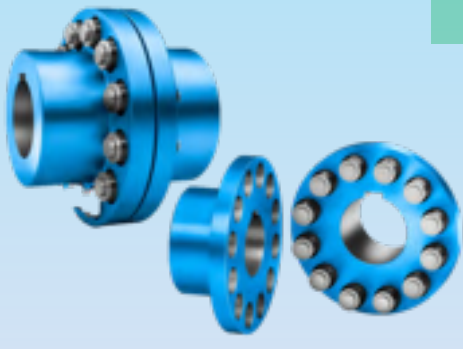
#### N-EUPEX DS PIN COUPLING

- Damping shaft coupling that can be used universally to compensate for shaft misalignments
- Nominal torque range from TKN = 60 Nm up to 21,200 Nm with 19 sizes
- Temperature range: from  $-50^{\circ}\text{C}$  to  $+100^{\circ}\text{C}$



## OUR PRODUCTS FLENDER

### Couplings Flexible Coupling



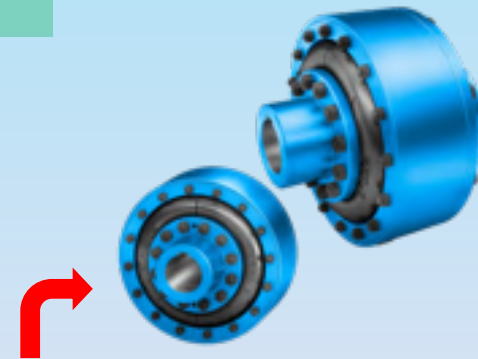
#### RUPEX PIN AND BUSH COUPLING

- Damping, fail-safe pin and bush coupling for medium and higher torques
- Nominal torque range from TKN = 200 Nm up to 1,690,000 Nm with 26 sizes
- Temperature range: from  $-50\text{ }^{\circ}\text{C}$  to  $+100\text{ }^{\circ}\text{C}$



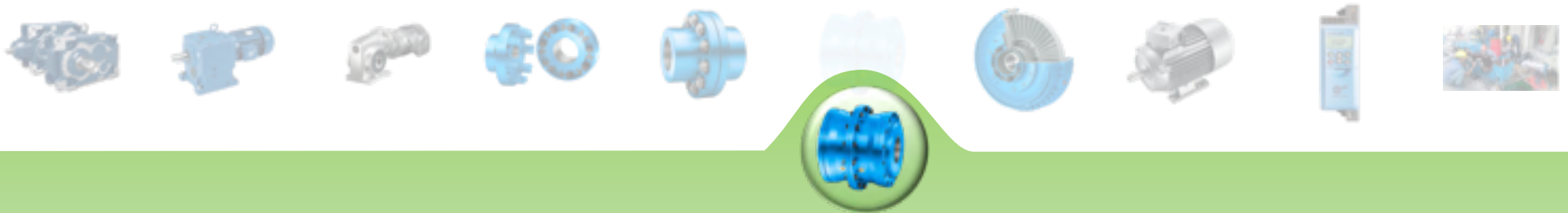
#### ELPEX-B RUBBER TIRE COUPLING

- Highly flexible, backlash-free tire coupling
- Nominal torque range from TKN = 24 Nm up to 14,500 Nm with 15 sizes
- Temperature range: from  $-50\text{ }^{\circ}\text{C}$  to  $+50\text{ }^{\circ}\text{C}$  for natural rubber materials, from  $-15\text{ }^{\circ}\text{C}$  to  $+70\text{ }^{\circ}\text{C}$  for chloroprene rubber



#### ELPEX FLEXIBLE RING COUPLING

- Highly flexible, backlash-free tire coupling
- Nominal torque range from TKN = 1,600 Nm up to 90,000 Nm with 9 sizes
- Temperature range: from  $-40\text{ }^{\circ}\text{C}$  to  $+80\text{ }^{\circ}\text{C}$

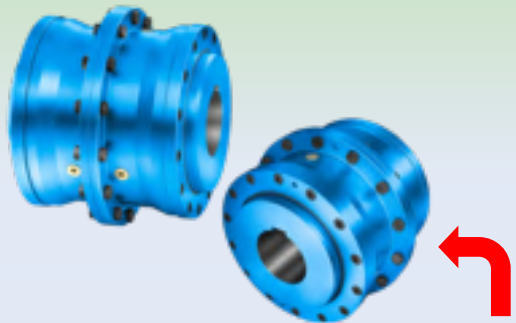


## OUR PRODUCTS

# FLENDER

### Couplings

### Rigid Coupling



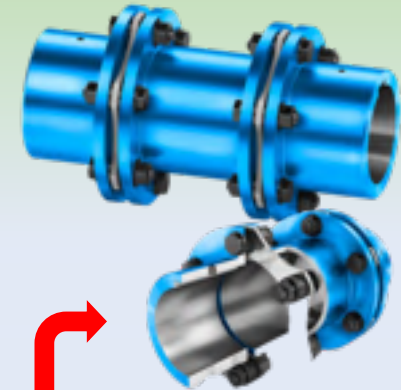
#### ZAPEX ZW GEAR COUPLING

- Double-jointed gear coupling
- Nominal torque range from TKN = 1,300 Nm up to 7,200,000 Nm with 31 sizes
- Temperature range: from  $-20^{\circ}\text{C}$  to  $+80^{\circ}\text{C}$



#### ZAPEX ZN GEAR COUPLING

- Double-jointed gear coupling
- Nominal torque range from TKN = 1,020 Nm up to 162,500 Nm with 12 sizes
- Temperature range: from  $-20^{\circ}\text{C}$  to  $+80^{\circ}\text{C}$



#### N-ARPEX ALL-STEEL COUPLING

- Backlash-free, torsionally rigid all-steel multi-disk coupling
- Nominal torque range from TKN = 350 Nm to 2,000,000 Nm
- Temperature range: from  $-50^{\circ}\text{C}$  to  $+280^{\circ}\text{C}$



## OUR PRODUCTS



Couplings

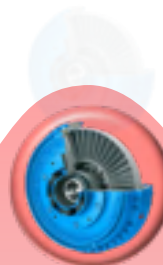
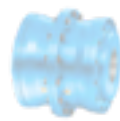
Rigid Coupling



Rigid Flange Coupling – RFK  
Max Torque : 625.000 Nm

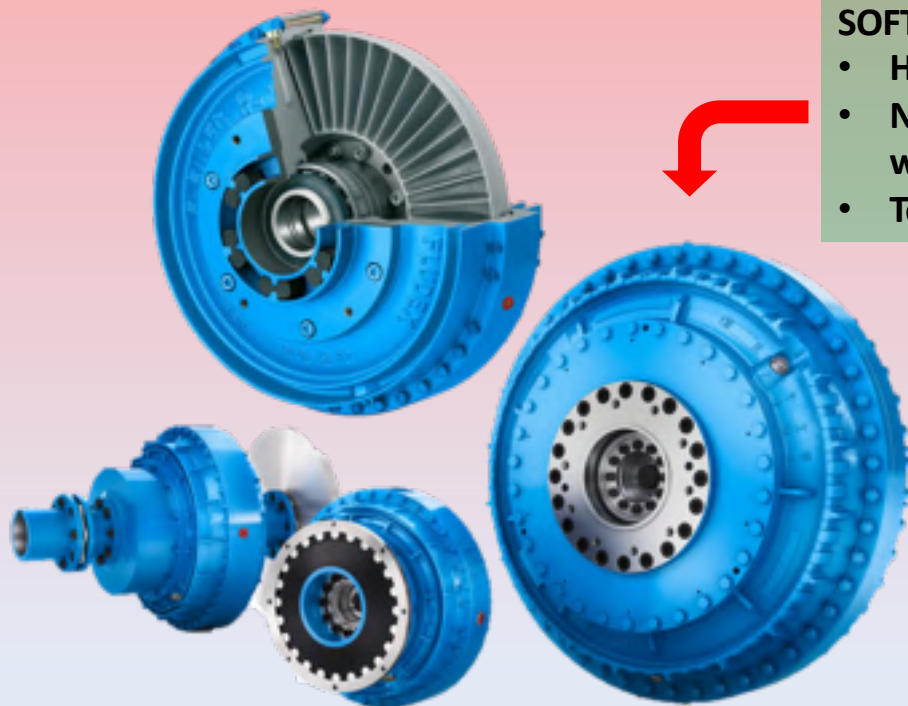


Rigid Shaft Coupling – RWK  
Max Torque : 7.600 Nm



## OUR PRODUCTS **FLENDER**

Couplings  
Fluid Coupling



### SOFT AND SAFE

- Hydrodynamic fluid coupling
- Nominal output from 1.2 kW up to 2,500 kW with 15 sizes
- Temperature range: from  $-40\text{ }^{\circ}\text{C}$  to  $+50\text{ }^{\circ}\text{C}$

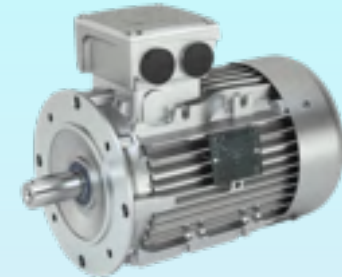




## OUR PRODUCTS



SIEMENS



### General Purpose motors

Performance: 0,12 – 55 kW (FS63-FS250)

Efficiency classes: IE1, IE2, IE3, IE4

Standard and smooth motors

### Severe Duty motors

Performance: 0,09 – 500 kW (FS71-FS450)

Efficiency classes: IE3 & IE4

Motor



## OUR PRODUCTS



SIEMENS



NORDAC PRO:  
Control cabinet inverter SK  
500E

Nominal ratings:

- Power range up to 160 kW
- Control cabinet installation
- IP20



NORDAC PRO:  
Control cabinet inverter SK  
500P

Nominal ratings:

- Power range up to 5.5 kW
- Control cabinet installation
- IP20



NORDAC FLEX: Decentralised  
frequency inverter SK 200E

Nominal ratings:

- Power range up to 22 kW
- Wall or motor mounting
- IP55, IP66





## SERVICES

### (Workshop & Onsite)

#### **Workshop Inspection and repair**

Our expertise :

- Complete Inspection
- Troubleshooting
- Reporting
- Spareparts Replacement
- Assembly & Disassembly
- No Load Test

#### **Onsite Inspection, Diagnostics/ Troubleshooting, Onsite repair, Alignment and Commissioning**

Our mechanical drives & power transmission expert have done many inspections, failure root cause analyses, and service job in many industrial.

Our scope :

- Drives System Installation & Commissioning
- Condition based maintenance
- Equipment health check & management
- Onsite inspections
- Spareparts replacement
- Gearbox Assembly & Disassembly
- Coupling Installation & Alignment
- Etc.



## SERVICES

(Workshop & Onsite)







## SERVICES

(Workshop & Onsite)





## SERVICES

(Workshop & Onsite)





## SERVICES

(Workshop & Onsite)







## SERVICES

(Workshop & Onsite)





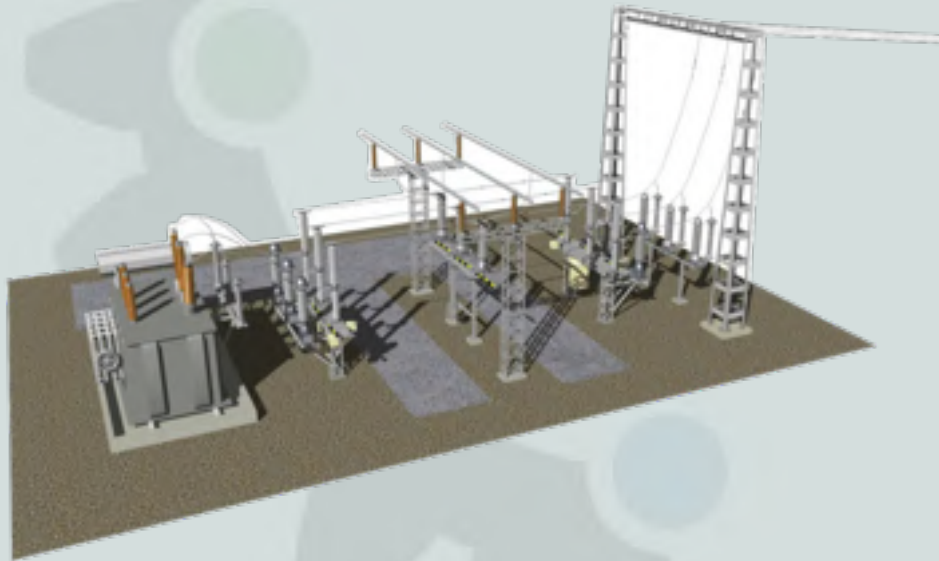
## SERVICES

(Workshop & Onsite)

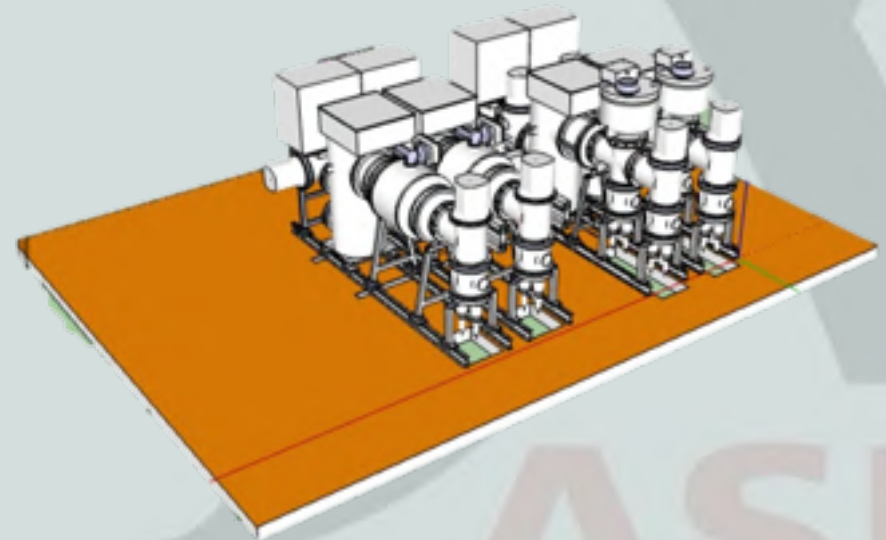


# ELECTRICAL WORKS

## Electrical Substation Projects



**Air Insulated Switchgear (AIS)**



**Gas Insulated Switchgear (GIS)**



# ELECTRICAL WORKS

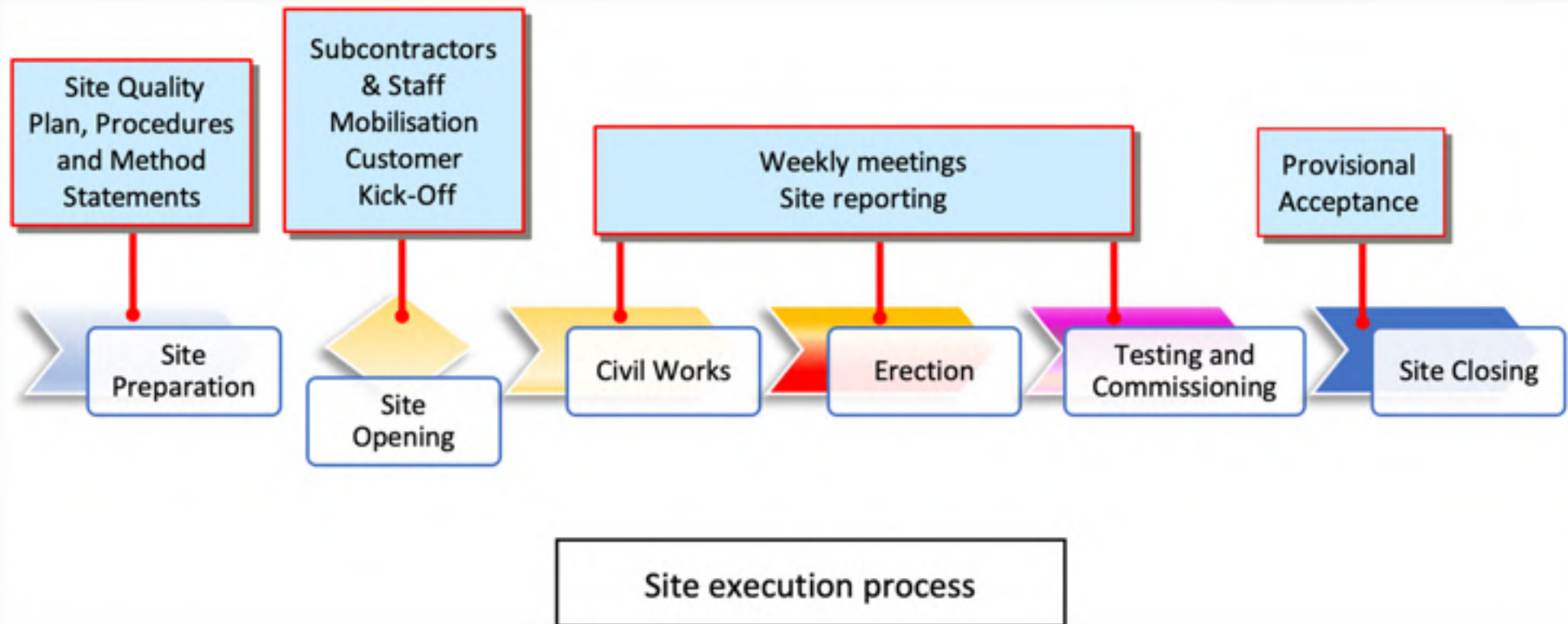
## Electrical Substation Projects **Site Management**



ASE



# Site Management



# Site Manager

Typical Site Management Organisation "Single Site"



Typical Site Management Organisation "Multi Sites"



**Our business presence provides solutions for companies that require site management services. Especially, in Electrical Substation Project (AIS & GIS).**

- ❖ Have more than 7 years project experience in AIS (Air Insulated Switchgear) and GIS (Gas Insulated Switchgear) project
- ❖ Understand site management, supervision, and reporting
- ❖ Demonstrated ability to read and interpret civil/electrical drawings, and technical manuals
- ❖ Experience in scheduling
- ❖ Have working knowledge of best practices in safety policies and procedures



# Project Engineer/ Ass Project Manager

Typical Site Management Organisation "Multi Sites" with Project Engineer/ Assistant Project Manager



Our advantage is we have project engineer who:

- ❖ Have more than 4 years project experience in AIS (Air Insulated Switchgear) and GIS (Gas Insulated Switchgear) project
- ❖ Have knowledge and experience of Project Management methodology
- ❖ Have commercial awareness with knowledge of both budgetary and Financial control
- ❖ Have qualification degree in Electrical/Engineering discipline
- ❖ Have experience filling the role of project engineer for several projects occurring concurrently
- ❖ Have strong command of the English language with good written and oral communication skills to work
- ❖ Proficiency with reading and interpreting contract documents
- ❖ Proficient in operating Microsoft Project

**Contact Us**



**PT ALPHA SOLUSI ENERGI**

*Your reliable mechanical drives & energi solutions partner*

**Komplek Bumi Puspitek Asri  
Jl Raya Bumi Puspitek Asri, Sektor 1, Blok A1, No 1,  
Tangerang, Banten, 15339, Indonesia.**

**☎ (021) 5999-9266**

**✉ [inquiry@alphasolusienergi.com](mailto:inquiry@alphasolusienergi.com)**

**<https://alphasolusienergi.com>**

**Thank You**