



# ALIM AMPUJAYA STEEL PROFILE



An Accredited Engineering, Manufacturer and Installation Company

# Preface

Established in 1980, which is one of Alim Group companies engaged in the Pipe Manufacture, Alim Ampuhjaya steel continuously develop the business and competence to become the one of reliable partner in Engineering, Fabrication and Construction company.

Supported by knowledge, technological and sciences, also the fundamental experience of fabrication pressurized equipment Alim Ampuhjaya has been able to produce a variety of products such as, Pressure Vessels, Heat Exchangers, Towers, welded pipe and Steel Structures for their supports including Building Structure and Bridges

Integrated manufacturing system with modern fabrication facilities and also supported by professional engineers give guarantee quality of yielded product being able to be tested with international quality system standard. Steps of fabrication process are always controlled tightly by independent department, Starting from vendor assessments and selection, receiving material, fabrication process through finished product become guarantee of our product quality can satisfy and fulfill quality standard which you expect.

We have in line of the same opinion that designed equipment with meticulous calculation and election of good materials also tightly control each every process will produce satisfying product of us.

Let we conduct that all to you.



# BUSINESS OUTLINE

Our activities cover all models of Pressure vessels, Towers, Heat exchangers, Boilers, Condensers and also plant facilities like Building Steel Structures, Bridges and Welded Pipe for various process industries as per national and international Codes and Standard like, ASME, TEMA, JIS, API and other customer specifications which material of all applicable grade are used.

We have experience in designing, manufacturing and testing according to the standards & codes of all international bodies. Inspection & testing is done by our own independent quality control department includes control of purchased material on the basis of written procedures and systematic inspections throughout the manufacturing cycle.

The quality control operations include but are not limited to welding procedures, welder's qualifications, heat treatment, chemical analysis and other NDT. Chemical laboratory and metallurgical laboratory are available in house.

We have handled a number of projects where the equipment has been completely engineered, fabricated and installed by our own facilities. It stands to reason that our workshops are equipped with modern machinery & devices including transportation facilities.

Our development staffs, designers, estimators, planning and production engineers are accustomed to working in closely - knit team on all undertaking. This teamwork ensures the maximum efficiency for the company's design & manufactures



# PRODUCT OUTLINE

Engineering and Manufacturing of Pressure Vessels, Towers, Heat Exchangers, Boilers, and Structural for their support other plants equipment for various Process industries as per international codes, standard and customer specifications, in Carbon, Stainless Steel.

## HEAT TRANSFER EQUIPMENTS

- Shell and Tube type Heat Exchangers (fixed head, floating head, U-tube type).
- Condensers, Evaporators.
- Waste heat boilers, Steam Drums.



## PRESSURE VESSELSS / PROCESS EQUIPMENTS

- Separators, filters, strippers, De-aerator.
- Distillation / absorption columns.
- Agitators, Polymerization vessels.
- Mobile vessels like tankers for LPG, Ammonia, etc



## STORAGE EQUIPMENTS

- Bulk LPG Storage Bullets.
- Oil / Gas Storage Tanks.
- Air Receivers, Gasholders.
- Storage Silos
- Tanks for Storage of Acid and Other Chemical

# PRODUCT OUTLINE

## SPECIALITY EQUIPMENTS

- Primary & secondary reformers.
- EDC Crackers.
- Rotary / Fluidized bed dryers.
- Hydro crackers.
- Cyclones, Scrubbers.
- Turbine casings, Penstocks.
- Rotary Kilns, Calciners.
- ESP Casings, Stacks.
- Other custom built equipments.



## STRUCTURE EQUIPMENTS

- Bridge Structure (Composite Type B&C, Truss Type A,B&C)
- Building Structures.
- Tower Transmission Structures.
- Conveyor Structure



## SPIRAL WELDED PIPE

- Capabilities range  
OD 6" up to 88" thickness 20mm
- Internal & External Coating are available  
for Epoxy, Cement, Polyethylene .



# ENGINEERING CAPABILITIES

Supported by knowledge, technological and sciences, also supported by professional engineers, we can undertake design for various equipment using computer to guarantee towards maximal result.

## **DESIGN AND ENGINEERING**

Mechanical Design  
Detail Drawing  
Material Billing and Specification  
Fabrication Procedure

## **DESIGN CONSTRUCTIONS**

ASME Section I and Section VIII Div.1  
TEMA R, C and B Class  
ASCE  
JIS, API 620, API 650, API 5L, etc

## **DESIGN MATERIAL CONSTRUCTIONS**

### **CARBON STEELS**

Almost all grades of ASME/ASTM, DIN, BS and JIS standards. Typically ASTM SA.515, SA.516, SA 252, SA.285, BS.1501, DIN.17155 & JIS.SS400.

### **STAINLESS STEELS**

Austenitic Grades 304, 310, 316, 304L, 316L etc.

## **MECHANICAL DESIGN SOFTWARES**

PV Elite for ASME Code  
TMA.  
NISA II and MSC Nastran  
Staadpro

## **DRAFTING AND SUPPORT**

Autocad  
Sigmanest  
Tekla



# PRODUCTION FACILITIES



MULTI TORCH FLAME PLANNER  
6 mtr x 20 mtr, cutting.

3 ROLLER BENDING MACHINE  
Bend max. 54 mm



VERTICAL TURNING MACHINE  
Dia 4500mm x heigh 2000 mm

# PRODUCTION FACILITIES



MULTI FACE MILLING MACHINE  
L 8000 mm x W 2500mm ..

HORIZONTAL DRILLING AND  
MILLING MACHINE  
L 15000mm x H 5000mm



PRESSING MACHINE



# PRODUCTION FACILITIES



CYLINDRICAL LATHE MACHINE

..

LATHE MACHINES FACILITY  
Various capacity



PRESSING AND DRILLING FACILITIES

# PRODUCTION FACILITIES



RADIAL DRILLING MACHINE

..

SAW WELDING MACHINE  
4000mm x 4000mm



FLATENING AND CUTTING PLATE  
MACHINE

# INSPECTION CAPABILITIES

Inspection and testing to ensure that equipment being fabricated are met to the quality requirement accordance to national and international Code and Standard as well as customer specification are been done in house.

## NON DESTRUCTIVE EXAMINATIONS

Radiography Test

Ultrasonic Test

Magnetic Particle Test, Penetrant Test

Hardness Test, Holiday Test



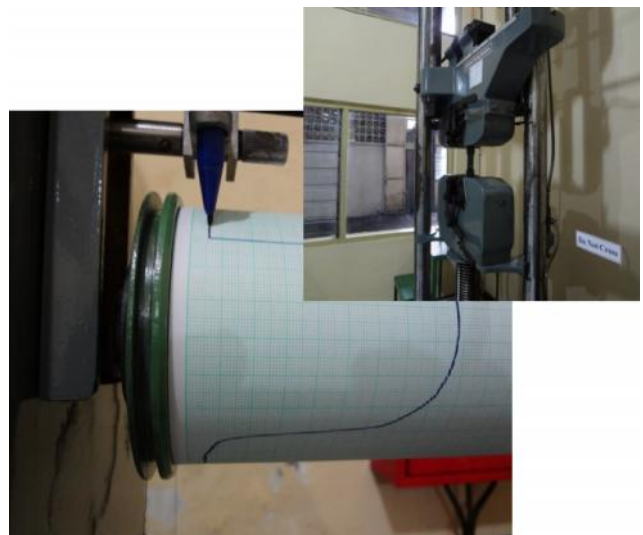
## DESTRUCTIVE EXAMINATIONS

Mechanical Test

Micro Spectral Analysis

Impact Test

Chemical Analysis







## Head Office & Workshop

Jl. Letjen Sutoyo 241 Medaeng, Waru-Sidoarjo 61256, East Java Indonesia.

Phone : ( 062-31) 8532589 ( Hunting )

Facsimile : ( 062-31) 8532791, 8531639

E-mail : [commercial.div@alimsteel.com](mailto:commercial.div@alimsteel.com)

Website : [www.alimsteel.com](http://www.alimsteel.com)

## Representative Office

The Energy 17<sup>th</sup> floor, SCBD lot 11A

Jl. Jendral Sudirman Kav. 52-53 Jakarta 12190

Phone : ( 062-21) 2505028, 52971788

Facsimile : ( 062-21) 2505328