



- DISTRIBUTOR
- SYSTEM INTEGRATOR
- ELETRICAL COMPONENT SUPPLIER

PRODUCT CATALOGUE

PT. AGUNG BUANA SENTOSA

Komplek Ruko Pengampon Square Blok B12-15
Jl. Semut Baru - Surabaya - Jawa Timur INDONESIA 60273

Ph. +62 31 3550081 • Fax. +62 31 3550107

• +62 878 5171 5118 • e. info@agungbuanasentosa.com

www.agungbuanasentosa.com



PT. AGUNG BUANA SENTOSA

Since its establishment in September 1997, **PT. AGUNG BUANA SENTOSA** has been successfully transformed from a local trading company to one stop solution for electrical's supplies and services. We specialize in Electrical Technology, Electrical Devices' supplier & Distributor, Instrumentation, Automation, and Engineering services. We always thrive to provide an outstanding and responsive services in the most cost-effective way to our customers.

Today, we have developed extensive businesses in specialized electrical industry. These include full range of electrical products, electrical components for switchboard and control panel, construction project, project management and consulting services. We do provide A - Z electrical services from general supply to installation.

VISION

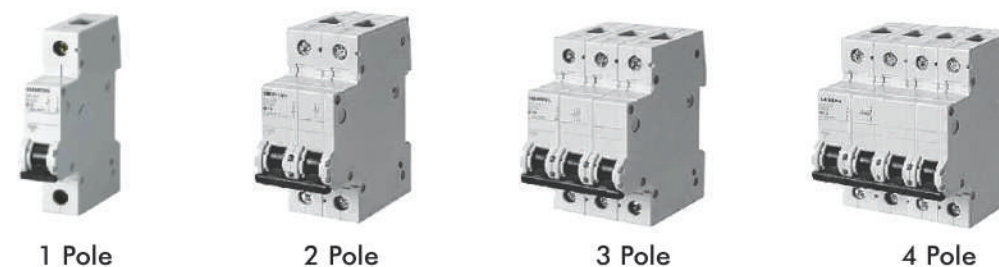
To be the leader in Electrical's supplier through excellence in customer services & innovation.

MISSION

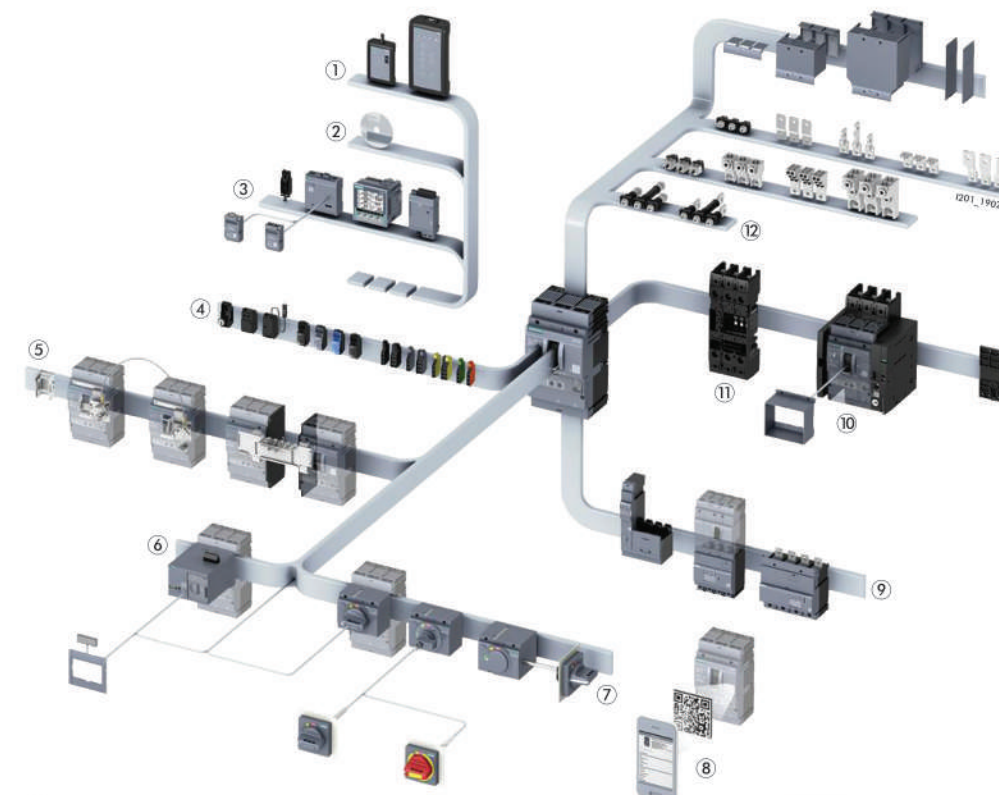
We are committed to put our customers' needs first. To generate a sustainable growth in our existing businesses, we combine our knowledge, experiences, assets and human resources to create a valuable solution to our customers.

SIEMENS

Miniature Circuit Breakers (MCB)



Wide range of accessories for flexible use

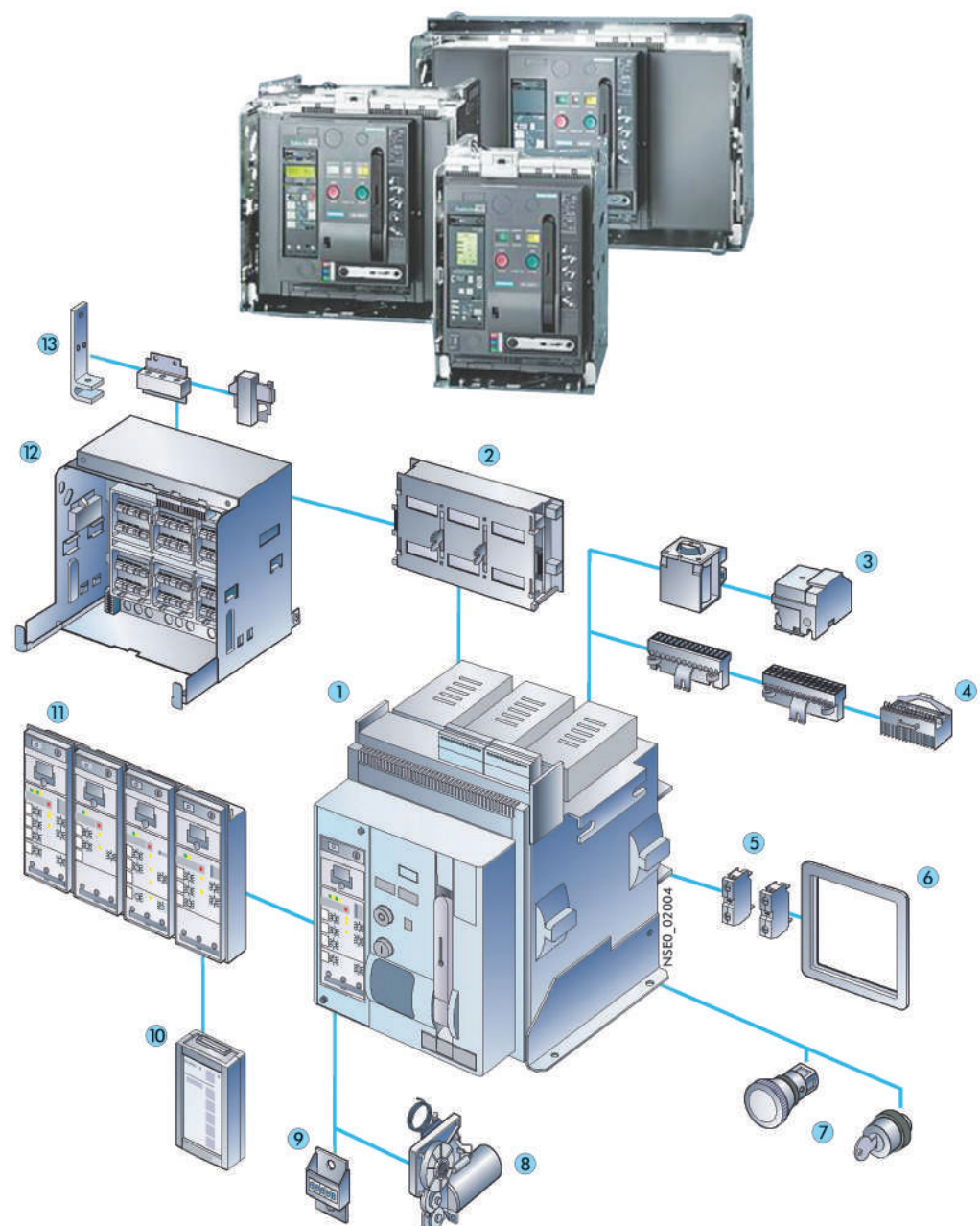


- ① Test devices
- ② Powerconfig software
- ③ Communication
- ④ Internal accessories
- ⑤ Locking and interlocking
- ⑥ Motor operator
- ⑦ Manual operators
- ⑧ Knowledge Manager
- ⑨ Residual current devices
- ⑩ Draw-out technology
- ⑪ Plug-in technology
- ⑫ Connection technology



SIEMENS

Air Circuit-Breakers Standard Applications



- | | |
|---|---|
| ① Circuit breaker | ⑨ Operating cycles counter |
| ② Shutter | ⑩ Manual tester for electronic trip unit (ETU) |
| ③ Closing solenoid, auxiliary trip unit | ⑪ Protective device with device holders, electronic trip unit (ETU) |
| ④ Auxiliary conductor plug-in system | ⑫ Guide Frame |
| ⑤ Auxiliary switch block | ⑬ Main connection, front, horizontal, vertical |
| ⑥ Door sealing frame | |
| ⑦ EMERGENCY_STOP pushbutton, key operated | |
| ⑧ Motorized operating mechanism | |

▶ OTHER PRODUCTS



Metasol ACB



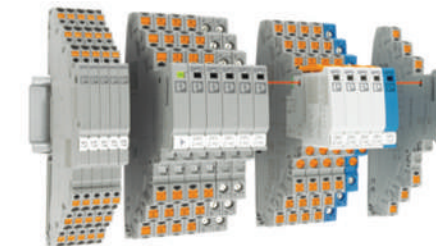
Susol ACB



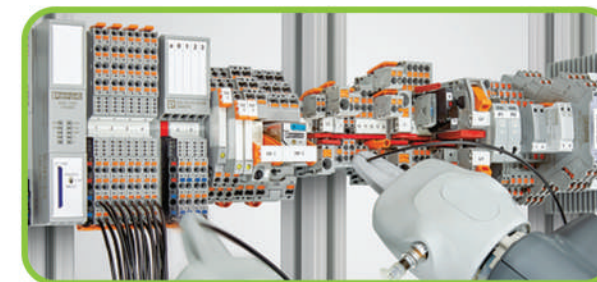
MMS



Safety Relay



Surge Protection for MCR Technology



One Connection Technology



Power Supply



Distribution Blocks



UPS + Power Supply



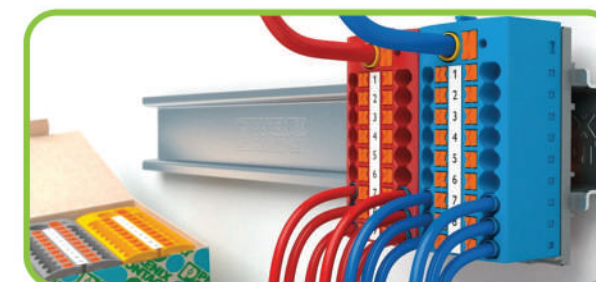
PC Industry



HMI



Surge Protection



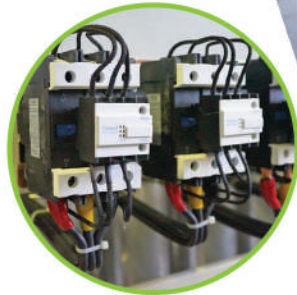
Push in Technology



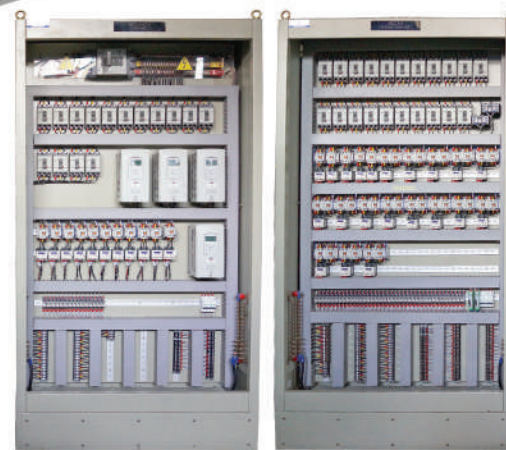
Automation Control Genset



Panel Power House (Form 2A)



Panel kapasitor bank dengan komponen FRANKE



Panel dengan komponen LSIS



Pembuatan panel dengan komponen Siemens



MCC Drawout



Panel PLC dengan komponen Phoenix Contact



Panel LVMDP dan Capasitor Bank (Form 3B)



Automation system for Mining Equipment:

- New Pit Pumping System
- Commissioning and Modification of mining equipment including shovel, drill, pumping system
- Conveyor System



Automation system for Material Handling and Packaging Machinery:

- Liquid Bottling and Capping Machine
- Palletizer
- Depalletizer
- Granule Packing Machine
- Automation for Various Machinery

Drive Systems:

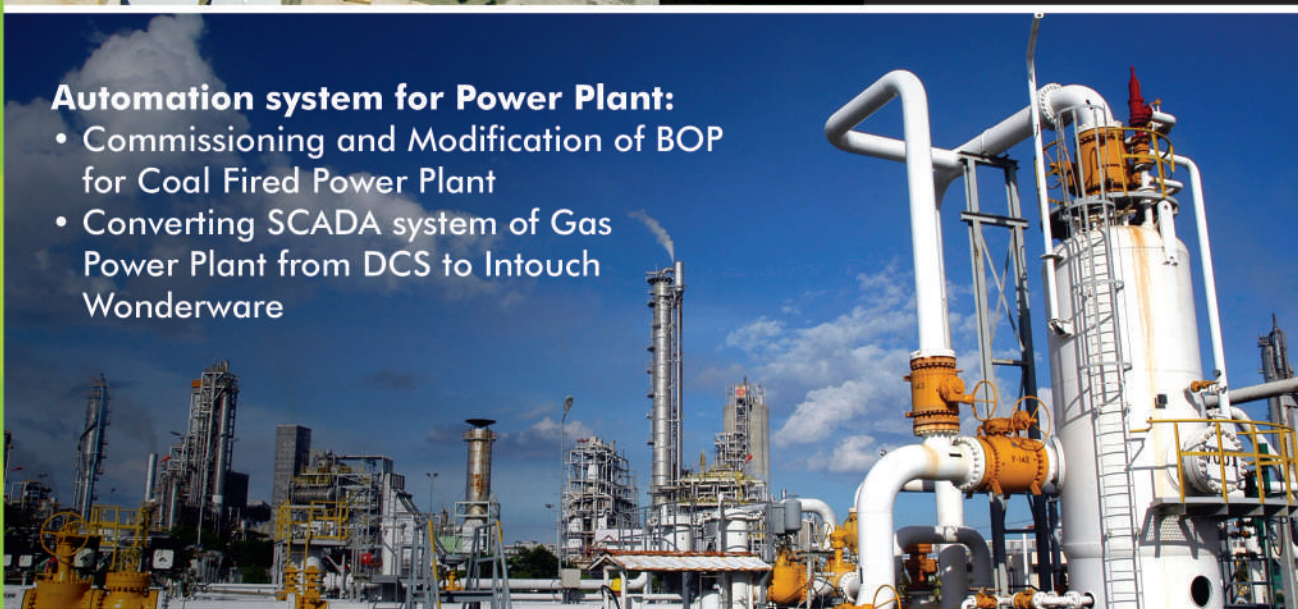
- Control Upgrade for Dip Unit
- Commissioning and Modification of Anode Changing Crane
- Paper Machine Operator Interface Upgrade
- Paper Machine Drives System Modification
- Galvanizing Line Modification





Automation system for Water and Waste Water Treatment Plant:

- New Water Treatment Plant of Clean Water Production
- New Demineralized Water Treatment Plant
- Filter Upgrade of Clean Water Production
- Commissioning and Modification of Waste Water Treatment Plant



Automation system for Power Plant:

- Commissioning and Modification of BOP for Coal Fired Power Plant
- Converting SCADA system of Gas Power Plant from DCS to Intouch Wonderware



Automation system for Chemical Plant:

- New Chemical Processing Plant
- New Chemical Processing Machinery
- Commissioning and Modification of existing Chemical Processing Machinery

PT. AGUNG BUANA SENTOSA