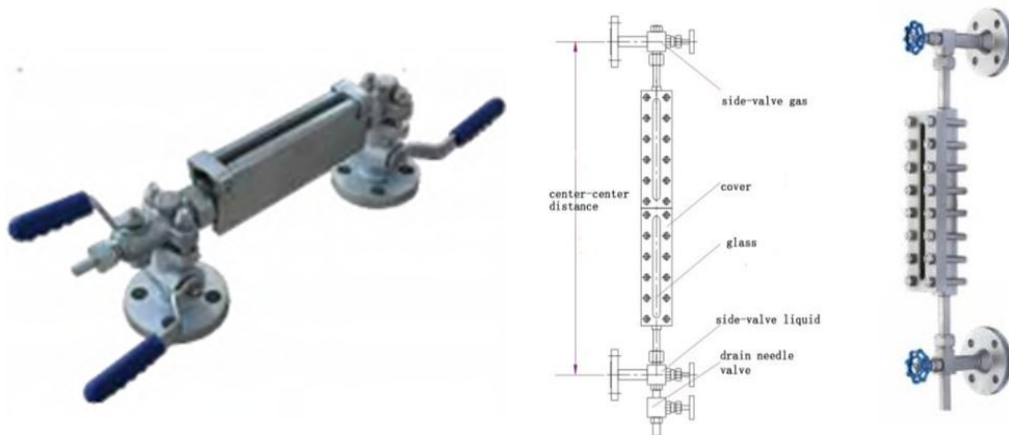


# REFLEX LEVEL GAUGE



## Operation Principle

Reflex level gauges are commonly used for level detection within a specific vessel, and the primary principle is based on the difference in refractive indices of vapor and liquid

- Greater accuracy and better reability, make it very highly beneficial in many industries
- Passive measurement
- More flexible in many application

## Specification

- C to C : 0~300, or 0~2000 mm
- Recommended length : 550, 850, 1150, 1450, 1750 mm
- Material of glass plate : Carbon Steel, 304, 316L
- Nominal pressure : Reflection type : 4,0 Mpa
- Working Temp. : 0~500oC
- Heating steam pressure :  $\leq 1,0$  Mpa
- Steel ball closing pressure :  $\geq 0,3$  Mpa

Yusuf Hamdani  
yusuf.hamdani@arita.co.id  
08990777780

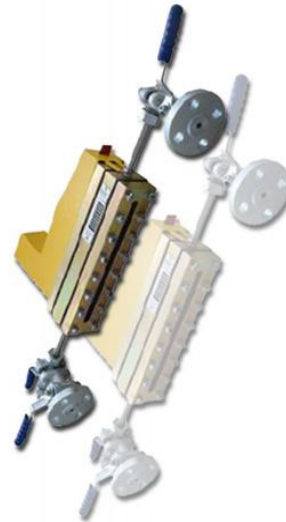
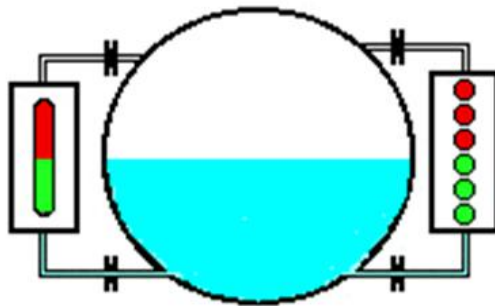
CATALOGUE AT HERE



SCAN NOW!



# BICOLOR LEVEL GAUGE



## Operation Principle

- Medium : Liquid - Vapor (2-phase, non-sticky, Hi-Temperature)
- Op. temperature :  $\leq 250^{\circ}\text{C}$  (Standard),  $\leq 450^{\circ}\text{C}$  (Special case)
- Op. pressure : up to 40 bar
- C to C length : 300-3000 mm
- Connection : Flange ( $\frac{3}{4}$ " or 1") ANSI/PN
- Glass material : Borosilicate
- Body material : Carbon Steel / SS304
- Flange Material : Carbon Steel / SS304
- Back light : Optional, LED lamp (24 VDC) / Fluorescent (220 VAC)

## Work Principle

Based on the difference in the refractive index when light passes through different mediums

## Advantages

- Direct and passive measurement
- Used to measure the water level at high pressure in the Boiler Drum

CATALOGUE AT HERE



SCAN NOW!



# TUBULAR LEVELL GAUGE



## Specification

Medium : Liquid (non-sticky)  
Op. temperature : up to 100°C for Acrylic, 180°C for Teflon  
Op. pressure : up to 10 bar  
Measuring range : 0-5000 mm (Acrylic), 0-10.000 mm (Teflon)  
Connection : Flange/Thread ( $\frac{1}{2}$ ",  $\frac{3}{4}$ ", 1", 2")  
Tube material : Acrylic / Transparent Teflon / Tempered  
Flange material : Brass / SS304  
Protector Material : Brass / SS304

## Advantages

1. Direct reading
2. High temperature application:  $\leq + 450^{\circ}\text{C}$
3. Applications for low pressure, non-toxic, and non-sticky liquids
4. Long lifetime, simple structure, easy cleaning & maintenance

## Application & Target

All transparent liquids found in industrial storage tanks and boilers:

- Oil and Gas Industry (gasoline, LPG and other oil products)
- Chemical Industry (Ammonia, propane, propylene, aromatics)
- Power plant (feedwater, make-up water, deaerator)

CATALOGUE AT HERE



SCAN NOW!



# MAGNETIC LEVEL GAUGE



## Specification

Medium	: Liquid (non-sticky, Hi-Tem perature)
Temperature	: ≤200°C (PTFE), ≤350°C (Stainless Steel)
Pressure	: up to 40 bar
Range	: 300-6000 mm
Flange	: Flange (¾", 1", 2") JIS/AN SI/PN
Material	: SS316
Body Material	: SS304 / SS316
Flange Material	: SS304 / SS316
Switch	: Optional, 1-3 units
Transmitter	: Optional, 4-20 mA
Installation	: Side or Top Mounted

## Work Principles

Magnetic buoys experiencing a Bouyancy effect on the conduit will affect the vertically mounted flipper as a visual indication.

## Advantages

1. Minimizes the chance of breaking under extreme pressure & temperature conditions
2. Installed separately so that it is not affected by the toxic & corrosive properties of the liquid
3. Wide measuring range, and high accuracy
4. Maintenance-free, the indicator is not in direct contact with the process

## Application & Target

- Chemical Industry
- Power Plant (Steam PP)
- Oil and Gas Industry
- Palm Oil Industry
- Paper Industry
- Factory Waste Process
- Chemical Fertilizer Industry

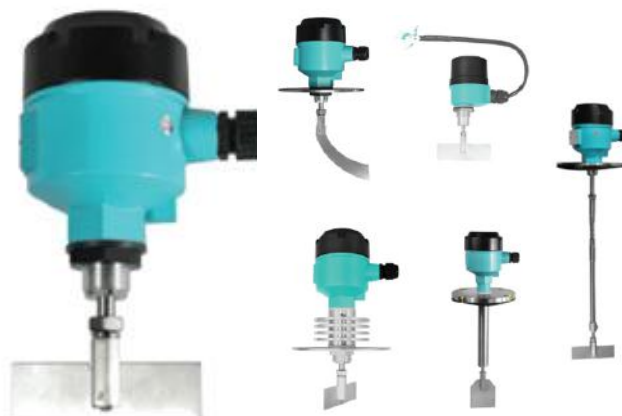
CATALOGUE AT HERE



SCAN NOW!



# ROTARY PADDLE SWITCH



## Operation Principles

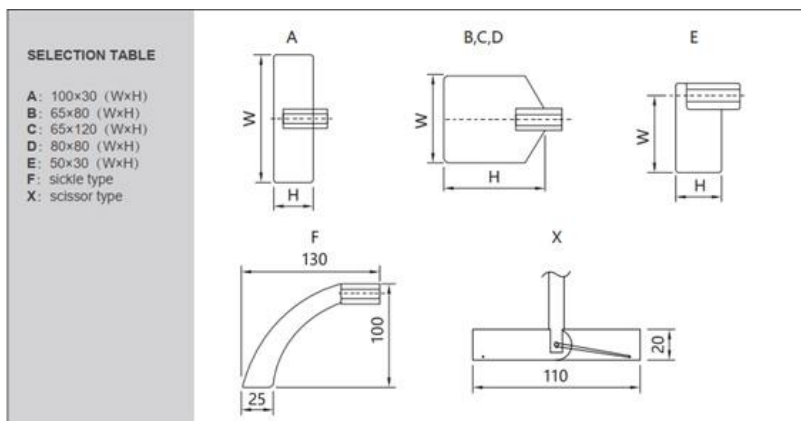
Rotary paddle level switch utilizes micro motor as drive device, transmission shaft contact with clutch. When it does not contact with material, the motor runs normally; when the blade contact with material, the motor stops running; testing device outputs a contact signal and cuts the power and it stops rotary in the meantime. The pressure to blade disappears when the material gradually fall down, and the testing device recovered to the original state by torsional spring.

## Place of Use

Suitable to be applied in chemistry, pharmacy, fodder, cement, food and metallurgical industry

## Product Features

1. The motor imported motor has reliable performance which is able to run for long time
2. Special design of sealed oil can prevent powder dust enter along with the axis
3. Torsion is stable and reliable, also could be regulated
4. When the blade bears too much load, motor turning system will skid automatically to prevent from damage
5. Contact specification, blade, length could be custom made.



CATALOGUE AT HERE



SCAN NOW!



# CABLE FLOAT LEVEL SWITCH



## Specification

Media	: Made of plastic material that floats easily
Contact Capacity	: $\leq 200^{\circ}\text{C}$ (PTFE), $\leq 350^{\circ}\text{C}$ (Stainless Steel)
Working Temperature	: up to 40 bar
Current Rating	: 300-6000 mm
Switch life	: Flange ( $\frac{3}{4}$ ", 1", 2") JIS/AN SI/PN
Cable Length	: SS316
Type Option	: SS304 / SS316
*Note. Liquid Only	: SS304 / SS316

## Work Principles

Made of plastic material that floats easily

## Advantages

1. Can be used to detect more than 1 point
2. Wide measuring range
3. Available for high temperature applications (up to 180 deg. °C)
4. Durable and affordable price

## Application & Target

- Wells, ponds, drainage, sewers, water
- Towers, storage tanks
- Water Industry and Hydropower
- Residential / Mall / Building
- Water supply & irrigation systems
- Waste treatment process

CATALOGUE AT HERE



SCAN NOW!



# CAPACITANCE LEVEL SWITCH AND TRANSMITTER



*Type Transmitter*



*Type Switch*

## Specification

### Transmitter

Measuring range	: 0,2-30 m
Pressure	: -0,1 – 32 Mpa
Probe temperature	: (-50) – 450°C
Accuracy	: 0,2% FS., 0,5% FS
Env. temperature	: (-20) – 60°C
Storage temperature	: (-55) – 125°C
Power Supply	: 12-28 VDC
Output signal	: 4-20 mA (RS 485 customized)
Protection grade	: IP 65
Material	: SUS304/316, PTFE
Connection	: Thread, flange (customized)
Application	: Water sewage, oil, etc.
Installation Method	: Vertical installation

### Switch

Supply Voltage	: 220 VAC
Contact Rating	: 250V 5 A
Operating Temp.	: (-20) – 120°C
Max. Pressure	: ATM
Signal Output	: Contact SPDT
Material	: Head-Aluminium, Flange-Order spec, Socket-Order spec, Insulator-PPS, Probe-SS304

## Work Principles

Converts the measurement object into the change in capacitance value.

## Advantages

1. Suitable for high temperature and pressure conditions
2. Specifically for measuring corrosive acids, bases and fluids
3. Variation of output signal (customized)
4. Simple structure
5. High resolution
6. Fast dynamic response
7. High and reliable protection

## Application & Target

- Level measurement on the oil tank
- Underground fuel tank
- Process industry
- Closed liquid tank
- Automotive, truck gas tank

CATALOGUE AT HERE



SCAN NOW!



# ELECTRODE LEVEL SWITCH



## Specification

Voltage	: -20C -220 deg C
Electrode	: <95%
Temperature	: Liquid, Powder, Or Solid
Instalation	: Solid 0.1g/cm3, Liquid > 0.7 g/cm3
Pressure	: G 3/4,
Probe	: ExiiaBT4
Operation	: 1"NPT; G3/4 Or Flange
Pompa	: DC24V; AC220V 50 Hz

## Work Principles

Based on open / closed electrical circuits, when the electrode is immersed in the conducting medium, the circuit closes and sends a signal.

## Advantages

1. Suitable for all liquids that are conductive, except volatiles
2. Equipped with a surge protector
3. Uses low voltage AC, prevents electrolysis, and extends operational life
4. Single wire connection, can be controlled by remote control

## Application & Target

- Well,
- Storage Tanks
- Pool
- Water Tower

CATALOGUE AT HERE



SCAN NOW!





# MAGNETIC FLOAT LEVEL SWITCH



*Type Switch*



*Type Transmitter*

## **Specification**

Operating Temp.	: (-20) - 100°C
Ambient Temp.	: (-40) - 70°C
Working pressure	: 0~1,0 Mpa
Medium density	: $\geq 0,68 \text{ g/cm}^3$
Output signal (Switch)	: SPST pr SPDT reed contacts
Output signal ( Transmitter)	: 4-20 mA, 2 Wire
Contact capacity	: 1A/220 VAC, 5A/24 VDC
Switch life	: $5 \times 10^4$ times
Electrical Interface	: M20 x 1,5 Internal thread
Explosion-proof Grade	: EXd11CT6, EXia11CT4~6
Protection Grade	: IP 65
Wetted material	: SS; PP; PTFE
Junction Box material	: Aluminium alloy

## **Work Principles**

The magnetic sensor which acts as a switch will move up and down according to the liquid condition.

## **Advantages**

1. Suitable for corrosive, acidic / alkaline liquids
2. Has good protection
3. Long lasting

## **Application & Target**

- Petrochemical
- Textiles, Printing & Dyeing
- Chemical Industry
- Chemical Industry

CATALOGUE AT HERE



SCAN NOW!



# SIDE-MOUNTED LEVEL SWITCH



*Standard Type*



*Customize Type Top*

## Specification

Media	: Used for liquid level control
Process Connection	: thread/flange connection
Housing	: Cast Alumunium
Switch Type	: SPDT
Contact Rate	: 30 watt
Operation Pressure	: Max. 6 bar
Operation Temp.	: (-20) – 100°C
Wetted Part Material	: SS304/316/Customize

## Work Principles

The buoy will experience a lift by the liquid, and will send an output in the form of a relay signal

## Advantages

1. Suitable for almost every liquid level measurement
2. Can be installed directly in the desired contact position
3. Cost effective
4. Easy to install
5. Reliable
6. Durable

## Application & Target

- Water Industry (Storage tanks, Water towers)
- Food and Beverage Industry

CATALOGUE AT HERE



SCAN NOW!



# MINI FLOAT LEVEL SWITCH



*Standard Type*



*Hi.Temp Type*



*High Temp. Tri Clamp*

## Specification

Operating Temp	: Max. 80°C
Connect Rating	: 5 VDC 0.5 A / 220 VAC 1.0 A
Contact Resistance	: 150 M(ohm)
Dielectric Strength	: 600V DC
Max. Voltage	: 350VDC/300VAC
Max. Current	: 0.5 A AC/DC
Insulation resistance	: min. 500 M(ohm)
Material	: SUS304/316
Signal Output	: Connect (SPST)

## Work Principles

The switch on the sensor operates when the float rises / falls due to Boyancy's force.

## Advantages

1. All sensor components (except cables) are made of Stainless steel
2. Mini float Switch is used to measure small tanks
3. Cost effective
4. Easy to install
5. Reliable
6. Durable

## Application & Target

- Food & Beverage Industry
- Dam, and wastewater
- Chemical Processes angkit Power plants
- Oil and Gas Industry

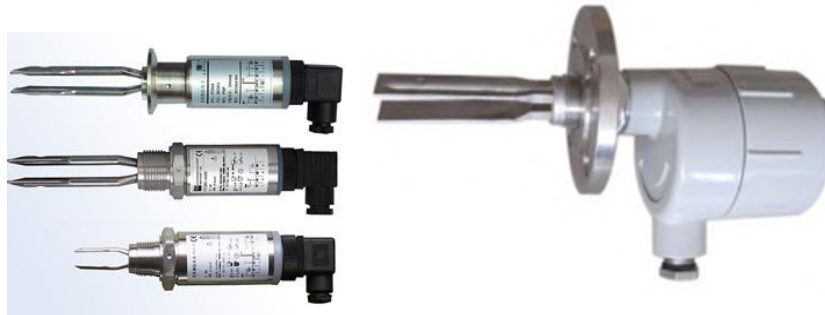
CATALOGUE AT HERE



SCAN NOW!



# TUNING FORK LEVEL SWITCH



## Specification

Medium Temperature	: -20C -220 deg C
Humadity	: <95%
Medium Temperature	: Liquid, Powder, Or Solid
Medium density	: Solid 0.1g/cm3, Liquid > 0.7 g/cm3
Electric Entry	: G 3/4,
Explosion Proof	: ExiiaBT4
Connection	: 1"NPT; G3/4 Or Flange
Power Supply	: DC24V; AC220V 50 Hz
DC Voltage Output	: 0-5 V, DC current Output : 0- 10mA
Power Supply	: 2 W

## Work Principles

The piezoelectric inside the sensor vibrates at a certain frequency, when the sensor touches the medium, it will disturb the vibrations of the piezoelectric and produce different frequency values.

## Advantages

1. Adaptive; Suitable for all conditions
2. Wide temperature range; (-20) - 220 deg. C
3. No need for calibration
4. Maintenance-free

## Application & Target

- Industrial water, mineral water
- Paper, Glue, Dye, Solid powder / flour industry
- Wastewater, sewage, slurry, acid / alkaline solutions
- Food & Beverage Industry
- Diesel or other dangerous liquid

CATALOGUE AT HERE



SCAN NOW!



# DP FLANGE LEVEL TRANSMITTER



*Standard Type*



*Hi.Temp Type*



*High Temp. Tri Clamp*

## Specification

Service	: Liquid, for open tanks
Power Supply	: 24 VDC
Range	: 0-40 Mpa (0-400 bar)
Diaphragm seal option	: SS316, Hastelloy C, Ti, tantalum
Filling fluid	: Silicone Oil
Silicone oil temperature resistance type	: (-40) to 149°C, (-30) to 200°C, (-10) to 350°C, (-10) to 400°C, 0 to 250°C, 15 to 315°C
Process connection	: Flange, capillary (option)
Output	: 0-20 mA, HART

## Work Principles

Using the value of the pressure difference between the surface and bottom of the tank as well as specific gravity to obtain the high value of the fluid.

## Advantages

1. Application only for liquids, both closed and open tanks
2. Applicable to medium with high operating temperature
3. There are hygienic materials (SS316) for application in the F&B Industry

## Application & Target

- Food & Beverage Industry
- Dam, and wastewater
- Chemical Processes angkut Power plants
- Oil and Gas Industry

CATALOGUE AT HERE



SCAN NOW!



# HYDROSTATIC LEVEL TRANSMITTER



## Specification

Accuracy	: 0,25 – 0,5% F.S
Measuring Range	: -95 kpa ~ 60 Mpa
Medium	: Liquid, Gas, and Vapor
Temp. Operation	: (-40) – 80°C
Material	: SS316 / Ceramics
Loading Resistance	: < 750 Ohm
Overload Ability	: Double~Triple Span
Protection	: IP 65
Humadity	: ≤95% RH
Output	: 2 wire 4-20 mA DC, 4 wire 0-10 mA DC
Related Equipment	: EXZ231B safety grid
Cable Length	: Customize

## Work Principles

Based on open / closed electrical circuits, when the electrode is immersed in the conducting medium, the circuit closes and sends a signal.

## Advantages

1. Suitable for all liquids that are conductive, except volatiles
2. Equipped with a surge protector
3. Uses low voltage AC, prevents electrolysis, and extends operational life
4. Single wire connection, can be controlled by remote control

## Application & Target

- Well,
- Storage Tanks
- Pool
- Water Tower

CATALOGUE AT HERE



SCAN NOW!



# RADAR LEVEL TRANSMITTER



*for Liquid*



*for Solid*



*for Water*

## Specification

Applicable to liquid, solid power/particles/blocks  
Process temperature : -40 to 250°C  
Process pressure : -1 to 40 bar  
Range Option : 0-10 m, 20 m, 30 m, 70 m  
Accuracy Option :  $\pm 3$  mm,  $\pm 5$  mm,  $\pm 15$  mm  
Emission Freq. Option : 26 Ghz  
Explosion-proof : Exd IIBT4  
Process connection : Thread

## Work Principles

The antenna system releases radar waves into the environment and will be recaptured by the detector and then converted into a signal.

## Advantages

1. Non-contact measurement
2. Suitable for liquid media, paste, grain, and block materials
3. Very fast and accurate

## Application & Target

All transparent liquids found in industrial storage tanks and boilers:

- Water / wastewater treatment; Tanks, canals, ponds, wells, etc.
- Raw liquid ingredients: soups, oils, heavy oils and drinks
- Raw chemicals: paints, oil solutions, acids, resins, lime slurries, waxes
- Powder raw materials: flour, rice, wheat, corn
- Chemical & Petrochemical fiber raw materials: Plastic powder, plastic coating

CATALOGUE AT HERE



SCAN NOW!



# ULTRASONIC LEVEL TRANSMITTER



**Integral Ultrasonic Level Meter**



**Remote Ultrasonic Level Meter**

## Features

Applicable to liquid	
Range	: 4 m, 6 m, 8 m, 10 m, 12 m, 15 m, 20 m, 30m
Accuracy	: 0.3% FS, 0.2% FS
Sensor Material	: PVC, PVDF, PTFE
Trans. Housing Material	: ABS/Aluminium
Output	: 4-20 mA (2-wire, 3-wire, or 4 wire)
Communication	: HART (option), RS485 (option)
Power Supply	: 24 VDC
LCD Display, 3 push buttons / 4 push buttons	

## Features:

Applicable to liquid	
Range	: 0-4 m, 6 m, 8 m, 12 m, 20 m, 30 m, 40 m
Accuracy	: 0.2% FS
Sensor Material	: PVC, PTFE (option)
Standard Cable Length	: 15 m, customize 60 m Max.
Trans. Housing Material	: ABS
Output	: 4-20 mA, HART (option), RS485 (option)
Power Supply	: 24 VDC / AC85-265 V
LCD Display, 3 push button	

## Work Principles

The probe releases ultrasonic waves into the environment and will be recaptured by the detector and then converted into a signal.

## Advantages

1. Non-contact measurement
2. Suitable for liquid media, pastes, block materials
3. Very fast and accurate

## Application & Target

- Water / wastewater treatment; Tanks, canals, ponds, wells, etc.
- Raw liquid ingredients: soups, oils, heavy oils and drinks
- Raw chemicals: paints, oil solutions, acids, resins, waxes

CATALOGUE AT HERE



SCAN NOW!

