

SHM

Meters

GIVES YOU TRUST



PRODUCT
CATALOGUE

SHM MULTI FUNCTION SEWAGE FLOW METERS

Analog / Mechanical Clean / Sewage Water Meter Cold 50°C and Hot 130°C Size DN 50 - DN 300 (2" - 12")

WITH SS316 CAP ANTI CORROSSION

DESCRIPTION

SHM Multi Function Sewage Flow Meters : Analog / Mechanical Flow Meter for Clean / Sewage Water is an epoxy coated cast iron with stainless steel cap, it has great flow rate measure & resistant to light chemicals & corrosion. Able for remote reading transmission system as equipped with built-in sensor (optional) and with data logger, can record for last 6 months logs.

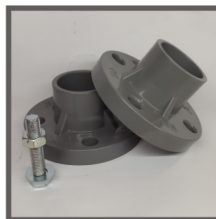
APPLICATION

SHM Sewage Flow Meters can be used for :

- Sewage Treatment Plant (STP) ie. Hospital, Hotel, Industrial, Mall, Residential, Palm Oil, Etc.
- Raw Water, Sludge Water and many others.
- Inlet & Outlet Water Treatment.
- Best suited for Pump System and high flow rate.

FEATURES

- Easy Installation & Maintenance.
- Dry Dial, Magnetic Drive.
- High Bypass & Very Low Head Loss.
- Glass Vacuum Sealed Register, Free from condensation and remain clear for long term.
- Working Temperature 0.1-50°C for Cold Water and 0.1- 130°C for Hot Water.
- Max. Pressure : 16 Bar. Max. Error : +/- 2%.
- Protection Grade : IP 68.
- ISO 9001 & ISO 4064.
- Warranty 2 Years (Full Services & Spare Parts).



TECHNICAL SPECIFICATIONS

SIZE			MAX FLOW QMAX	CONTINUOUS FLOW QN	TRANSITIONAL FLOW QT	MIN FLOW QMIN	LENGTH (L)	HIGH (H)	CONNECTION FLANGE		WEIGHT
DN	INCH	MM					(MM)		OUTSIDE DIAMETER (D1)	BOLT INNER DIAMETER (D2)	
M3 / HOUR											
DN 50	2"	50	30	15	3	0.45	200	272	165	125	12
DN 65	2.5"	65	50	25	5	0.75	200	274	185	145	15
DN 80	3"	80	80	40	8	1.2	225	281	200	160	16
DN 100	4"	100	120	60	12	1.8	250	291	220	180	18
DN 125	5"	125	200	100	20	3	250	312	250	210	22
DN 150	6"	150	300	150	30	4.5	300	341	285	240	32
DN 200	8"	200	500	250	50	7.5	350	384	340	295	40
DN 250	10"	250	800	400	80	12	450	435	405	350	68
DN 300	12"	300	1200	600	120	18	500	486	445	400	90

SHM WOLTMAN FLOW METERS

Analog / Mechanical Clean Water Meter Cold 50° C and Hot 130° C Size DN 40 - 300 (1 ½" - 12")

DESCRIPTION

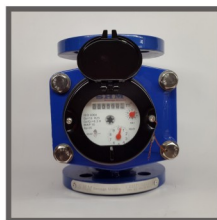
SHM Woltman Flow Meters : Analog / Mechanical Flow Meter for Clean Water are made from epoxy coated cast iron. A meter with magnetic transmission and dry recording head.

APPLICATION

SHM Woltman Flow Meters can be used for :
- Potable Water, Irrigation, and Industry Network.

FEATURES

- Removable element structure, easy installation and maintenance, register for universal use within this range detachable without Removing the meter from the pipeline.
- Dry-dial, Magnetic drive sensitive action, small pressure loss. Pulse Output Optional.
- Vacuum sealed register ensures the dial keep free from fog and Keep the reading clear in a long term service.
- Selected high quality materials for steady & reliable characteristic.
- Working Temperature 0.1-50°C for Cold Water and 0.1- 130°C for Hot Water.
- Max. Pressure : 16 Bar. Max. Error : +/- 2%.
- Protection Grade : IP 68.
- Cast iron.
- ISO 9001 & ISO 4064
- Warranty 2 Years (Full Services & Spare Parts).



HOT TYPE



HOT TYPE



HOT TYPE

TECHNICAL SPECIFICATIONS

SIZE		CLASS	WORKING PRESSURE (MPa)	MAX FLOW Q4	CONTINUOUS FLOW Q3	TRANSITIONAL FLOW Q2	MINIMUM FLOW Q1	MINIMUM READING	MAXIMUM READING	DIMENSION			WEIGHT (KG)
DN	INCH									LENGTH (L)	OUTSIDE DIAMETER (D1)	HEIGHT (H)	
				M3/H						M3		MM	
DN 40	1 ½"	B	1.6	25	20	0.5	0.35	0.005	999,999	200	150	198	9
DN 50	2"	B	1.6	50	40	0.8	0.5	0.005	999,999	200	165	215	12
DN 65	2 ½"	B	1.6	78.75	64	1.25	0.8	0.005	999,999	200	185	225	13.5
DN 80	3"	B	1.6	125	100	2	1.25	0.005	999,999	225	200	280	14
DN 100	4"	B	1.6	200	160	3.2	2	0.005	999,999	250	220	290	18
DN 125	5"	B	1.6	312.5	250	5	3.125	0.005	999,999	250	250	300	22
DN 150	6"	B	1.6	500	400	8	5	0.05	9,999,999	300	285	320	28
DN 200	8"	B	1.6	800	640	12.6	8	0.05	9,999,999	350	340	350	45
DN 250	10"	B	1.6	1250	1000	20	12.5	0.05	9,999,999	450	405	435	80
DN 300	12"	B	1.6	2000	1600	32	20	0.05	9,999,999	500	445	460	95

SHM VANE FLANGE CAST IRON FLOW METERS

Analog / Mechanical Vane Flange Cast Iron Clean Water Meter Cold 50°C Size DN 40 - 50 (1 1/2 - 2")

DESCRIPTION

SHM Vane Flange Cast Iron Flow Meters is a Analog / Mechanical Multi Jet type flow meters with flange connections. For clean water. Body are made from cast iron. Durable, high performance, economical.

APPLICATION

SHM Vane Flange Cast Iron Flow Meters can be used for : Irrigations, Cooling Systems, Filtration Systems, Water Monitoring, Residuals, etc.

FEATURES

- Working Temperature 0.1-50°C for Cold Water.
- Max. Pressure : 16 Bar. Max. Error : +/- 2%.
- Protection Grade : IP 68.
- Cast iron.
- ISO 9001 & ISO 4064
- Warranty 2 Years (Full Services & Spare Parts).



TECHNICAL SPECIFICATIONS

SIZE			MAX FLOW QMAX	CONTINUES FLOW QN	TRANSITIONAL FLOW QT	MIN FLOW QMIN	LENGTH (L)	HIGH (H)	CONNECTION FLANGE		WEIGHT
DN	INCH	MM					(MM)		OUTSIDE DIAMETER (D1)	BOLT INNER DIAMETER (D2)	(KG)
M3 / HOUR											
DN 40	1 1/2"	40	20	10	1	0.35	245	145	135	19	10
DN 50	2"	50	30	15	3	0.45	275	165	155	19	11

SHM MULTI JET CAST IRON FLOW METERS

Analog / Mechanical Multi Jet Cast Iron Clean Water Meter Cold 50°C Size DN 15 - 20 (1/2 - 3/4")

DESCRIPTION

SHM Multi Jet Cast Iron Flow Meters is a Analog / Mechanical Multi Jet type flow meters with screw connections. For clean water. Body are made from cast iron. Durable, high performance, economical.

APPLICATION

SHM Multi Jet Cast Iron Flow Meters can be used for : Irrigations, Cooling Systems, Filtration Systems, Water Monitoring, Residentials, etc.

FEATURES

- Working Temperature : 0.1-50°C for Cold Water.
- Max. Pressure : 16 Bar.
- Max. Error : +/- 2%.
- Protection Grade : IP 68.
- Material : Cast iron.
- ISO 9001 & ISO 4064
- Warranty 2 Years (Full Services & Spare Parts).



TECHNICAL SPECIFICATIONS

SIZE		CLASS	OVERLOAD FLOW	PERMANENT FLOW	TRANSITIONAL FLOW	MINIMUM FLOW	MINIMUM READING	MAXIMUM READING	DIMENSION			WEIGHT (KG)	CONNECTING THREAD (D)
DN	INCH		Qs	Qp	Qt	Qmin			LENGTH (L)	WIDTH (B)	HEIGHT (H)		
			M3/H		L/H				MM				
DN 15	1/2"	B	3	1.5	120	30	0.00005	99.999	165	98	116	1.65	G 3/4 B
DN 20	3/4"	B	5	2.5	200	50	0.00005	99.999	190	98	117	1.79	G 1 B

SHM MULTI JET BRASS FLOW METERS

Analog / Mechanical Multi Jet Brass Vane Wheel Dry Dial Clean Water Meter Cold 50°C and Hot 90°C
Size DN 15 - DN 50 (½" - 2")

DESCRIPTION

SHM Multi Jet Brass Flow Meters : Analog / Mechanical Flow Meter for Clean Water are made from brass material with vane wheel transmitting water flow into central gear in the vacuum sealed register by the magnetic coupling.

APPLICATION

SHM Multi Jet Brass Flow Meters can be used for :

- Irrigations, Cooling Systems, Filtration Systems, Water Monitoring, Residentials, etc.

FEATURES

- Multi Jet, Dry Dial, Turbine Type, Magnetic Drive.
- Pulse Output Optional.
- Vacuum Sealed Register ensures the dial keep free from fog and frost, keep the reading clear in a long term service.
- Working Temperature 0.1-50°C for Cold Water and 0.1- 90°C for Hot Water.
- Water Pressure \leq 1.0 Mpa or 1.6 Mpa.
- Protection Grade : IP 68.
- Maximum Permissible Error :
 - (1) In the lower zone from q_{min} inclusive up to but excluding q_t is \pm 5%
 - (2) In the upper zone from q_t inclusive up to and q_s is \pm 2%. For Hot water meter \pm 3%
- ISO 9001 & ISO 4064.
- Warranty 2 Years (Full Services & Spare Parts).



TECHNICAL SPECIFICATIONS

SIZE		CLASS	OVERLOAD FLOW	PERMANENT FLOW	TRANSITIONAL FLOW	MINIMUM FLOW	MINIMUM READING	MAXIMUM READING	DIMENSION			WEIGHT (KG)	CONNECTING THREAD (D)			
DN	INCH		Qs	Qp	Qt	Qmin			(L)	(B)	(H)					
			M3/H		L/H				M3					MM		
DN 15	1/2"	B	3	1.5	120	30	0.00005	99.999	165	98	116	1.65	G 3/4 B			
DN 20	3/4"	B	5	2.5	200	50	0.00005	99.999	190	98	117	1.79	G 1 B			
DN 25	1"	B	7	3.5	280	70	0.00005	99.999	260	103.5	124	1.85	G 1 1/4 B			
DN 32	1 1/4"	B	12	6	480	120	0.00005	99.999	260	103.5	124	2.68	G 1 1/2 B			
DN 40	1 1/2"	B	20	10	800	200	0.00005	99.999	300	125	162	5.25	G 2 B			
DN 50	2"	B	30	15	3000	450	0.00005	99.999	300	125	162	7.25	G 2 1/2 B			
									280	160	187.5		Flange Connect ISO 7005-2:1988 D=125			

SHM SINGLE JET BRASS FLOW METERS

Analog / Mechanical Single Jet Brass Vane Wheel Dry Dial Clean Water Meter Cold 50°C and Hot 90°C
Size DN 15 - DN 25 (½" - 1")

DESCRIPTION

SHM Single Jet Brass Flow Meters : Analog / Mechanical Flow Meter for Clean Water are made from brass material with vane wheel transmitting water flow into central gear in the vacuum sealed register by the magnetic coupling.

APPLICATION

SHM Single Jet Brass Flow Meters can be used for :

- Irrigations, Cooling Systems, Filtration Systems, Water Monitoring, Residentials, etc.

FEATURES

- Small & light.
- Single Jet, Dry Dial, Magnetic Drive.
- Vacuum Sealed Register, frost resistant, keep the reading clear in a long time.
- Rotate register head to any direction for convenient reading.
- Working Temperature 0.1-50°C for Cold Water and 0.1- 90°C for Hot Water.
- Water Pressure ≤ 1.6 Mpa / 16 Bar.
- Maximum Permissible Error :
 - (1) In the lower zone from q_{min} inclusive up to but excluding q_t is $\pm 5\%$
 - (2) In the upper zone from q_t inclusive up to and q_s is $\pm 2\%$. For Hot water meter $\pm 3\%$
- ISO 9001 Standard Class B.
- Warranty 2 Years (Full Services & Spare Parts).



TECHNICAL SPECIFICATIONS

SIZE		CLASS	OVERLOAD FLOW	PERMANENT FLOW	TRANSITIONAL FLOW	MINIMUM FLOW	DIMENSION			WEIGHT (KG)	CONNECTING THREAD (D)
DN	INCH		Qs	Qp	Qt	Qmin	LENGTH (L)	WIDTH (B)	HEIGHT (H)		
			M3/H		L/H		MM				
DN 15	½"	B	3	1.5	120	30	110	76	65	0.45	G ¾ B
DN 20	¾"	B	5	2.5	200	50	130	76	69	0.53	G 1 B
DN 25	1"	B	7	3.5	280	70	160	77	85	0.76	G 1 ¼ B

SHM MULTI JET ABS FLOW METERS

Analog / Mechanical Multi Jet Wet Dial Clean Water Meter Cold 50°C Size DN 15 - DN 20 (1/2" - 3/4")

DESCRIPTION

SHM Multi Jet ABS Flow Meters : Analog / Mechanical Flow Meter for Clean Water are made from plastic abs material. A water totalizing meters that display the total water usage. Used in applications where a standard brass is not compatible.

APPLICATION

SHM Multi Jet ABS Flow Meters can be used for :

- Low cost residential water measurement.
- Agriculture (Fertilizer, Pesticides and Herbicides).
- Irrigation.
- Water Monitoring.

FEATURES

- Multi Jet.
- Wet Dial.
- Sensitive.
- Reliable.
- Universal use.
- ABS Body.
- Working Temperature 0.1-50°C for Cold Water.
- ISO 9001 & ISO 4064
- Warranty 2 Years (Full Services & Spare Parts).



TECHNICAL SPECIFICATIONS

SIZE		R 80		R 100		Q3	Q4	MINIMUM READING	MAXIMUM READING	DIMENSION			WEIGHT (KG)	CONNECTING THREAD
		Q1	Q2	Q1	Q2					HEIGHT (H)	LENGTH (L)	WIDTH (B)		
DN	INCH	L/H		L/H		L/H		M3		MM				
DN 15	½"	31.25	50	25	40	2500	3125	0.00005	99.999	116	165	98	1.65	G 3/4 B
DN 20	¾"	50	80	40	64	4000	5000	0.00005	99.999	117	190	98	1.79	G 1 B

SHM PREPAID WATER METER

Contactless Radio Frequency IC Card Prepaid Water Meter DN 15 - DN 50 (1/2"-2")

DESCRIPTION

SHM Prepaid Water Meter is a breakthrough in paid water system method. Using Radio Frequency IC Card to paid first before use. Automatically stopping water supply when balance is zero. Effective control and supervision, minimize loss.

APPLICATION

- Residential.
- Any fields that need water monitoring system.

FEATURES

- Non Contact ID Card Technology. Wireless data transmission is used to solve the problem of waterproof, moisture proof and anti attack.
- Micro Power Technology. Power consumption is less than 0.5mA. Battery last for more then 6 years.
- Electric Suspension Ball Valve Technology. Anti locking, Non-Foul Characteristic, low pressure loss, low power consumption, anti rust, anti blocking.
- Automatic Valve Discharge. Anti Blocking, Anti Rust, Valve timing automatically switch action.
- Full Seal Design. All lines are sealed with epoxy resin, good sealing.
- Anti External-Magnetic Attack Technology. Valve automatically close when external magnetic attack occur.
- Warranty 2 Years (Full Services & Spare Parts).



TECHNICAL SPECIFICATIONS

SIZE			FLOW RANGE				MINIMUM READING	MAXIMUM READING	WEIGHTS (Kg)
			Q1	Q2	Q3	Q4			
MODEL	MM	TYPE	(m3/h)				(m3)		
SPH-15	1/2"	HORIZONTAL	0.03125	0.05	2.5	3.125	0.0001	999999	
SPH-20	3/4"	HORIZONTAL	0.05	0.08	4	5	0.0001	999999	
SPH-25	1"	HORIZONTAL	0.07875	0.126	6.3	7.875	0.0001	999999	
SPH-32	1 1/4"	HORIZONTAL	0.125	0.2	10	12.5	0.0001	999999	
SPH-40	1 1/2"	HORIZONTAL	0.25	0.32	16	20	0.0001	999999	
SPH-50	2"	HORIZONTAL	0.3125	0.5	25	31.25	0.0001	999999	

SHM LORA FLOW METERS

Long Range Wireless Smart Remote Reading With Valve Control Flow Meters Cold 0-30°C DN 15 - DN 25 (1/2"-1") Collector & Concentrator

DESCRIPTION

SHM Lora Flow Meters is a long range wireless smart remote reading electro mechanical water meter framework. This framework need flow meter to link in to collector then to concentrator which communicate to computer via gprs.

APPLICATION

Housing, Commerce, Light Industry.

FEATURES

Flow Meter

- Power Supply : Battery 2.7-3.6V
- Working Life : 3-10 Years
- Up Link Frequency : 470-510 MHz
- 868-915 MHz (Customized)
- Point To Point Distance : 1500 m
- Pressure : < 1mPa

Collector

- Power Supply : 220VA, 5w
- Up&Dn Link Frequency : 470-510 MHz
- 868-915 MHz (Customized)

Concentrator

- Power Supply : 220VA, 5w
- Down Link Frequency : 470-510 MHz
- 868-915 MHz (Customized)
- Up Link Frequency : GPRS
- Warranty 2 Years (Full Services & Spareparts)



TECHNICAL SPECIFICATIONS

SIZE		FLOW RATE		MAX FLOW	CONTINUOUS FLOW	TRANSITIONAL FLOW	MINIMUM FLOW	MINIMUM READING	MAXIMUM READING	DIMENSION			WEIGHT
DN	INCH	Q3/Q1	Q2/Q1	Q4	Q3	Q2	Q1			LENGTH (L)	WIDTH (B)	HEIGHT (H)	(KG)
M3/H								M3		MM			
DN 15	1/2"	80	1.6	3.125	2.5	0.05	0.3125	0.0001	999,999	258	100	143	1.3
DN 20	3/4"	80	1.6	5	4	0.08	0.05	0.0001	999,999	298	100	143	1.6
DN 25	1"	80	1.6	7.875	6.3	0.126	0.7875	0.0001	999,999	345	104	143	1.9
DN 40	1 1/2"	80	1.6	20	16	0.512	0.32	0.0005	999,999				
DN 50	2"	80	1.6	31.25	25	0.8	0.5	0.0005	999,999				
DN 65	2 1/2"	80	1.6	50	40	1.28	0.8	0.0005	999,999				
DN 80	3"	80	1.6	78.75	63	2	1.26	0.002	999,999				
DN 100	4"	80	1.6	125	100	3.2	2	0.002	999,999				
DN 125	5"	80	1.6	200	160	5.12	3.2	0.002	999,999				
DN 150	6"	80	1.6	312.5	250	8	5	0.002	999,999				
DN 200	8"	80	1.6	500	400	12.8	8	0.002	999,999				

SHM VOLUMETRIC TYPE C FLOW METERS

Analog / Mechanical Clean Water Meter Cold 30°C Size DN 15 - DN 25 (1/2" - 1")

DESCRIPTION

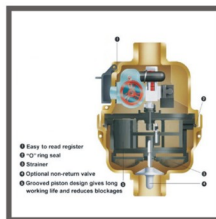
SHM Volumetric Flow Meters for clean waters come with 3 different type, brass, brass with blue paint and nylon. Applicable in conditions where the water are coming from below on vertical position. The working principles are when pressured water enters from lower inlet, pushes the rotary piston to rotate, which connected to counting mechanism.

APPLICATION

- High Rise Residential.
- Any fields that applicable to the conditions.

FEATURES

- Accuracy Class : 2
- Max Error at Low Flow Rate : +/- 5%.
- Max Error at High Flow Rate : +/- 2%.
- Temperature : 30°C.
- Water Pressure : MAP 16.
- Warranty 2 Years (Full Services & Spare Parts).



TECHNICAL SPECIFICATIONS

SIZE			FLOW RANGE				MINIMUM READING	MAXIMUM READING	WEIGHTS (Kg)
			Q1	Q2	Q3	Q4			
MODEL	MM	TYPE	(m3/h)				(m3)		
SHMV-15	1/2"	VERTICAL	0.016	0.025	2.5	3.125	0.001	9999	
SHMV-20	3/4"	VERTICAL	0.025	0.04	4	5	0.001	9999	
SHMV-25	1"	VERTICAL	0.039	0.063	6.3	7.875	0.001	9999	

SHM STAINLESS STEEL FLOW METERS

Analog / Mechanical Stainless Steel Liquid Meter Cold 50°C and Hot 90°C Size DN 15 - DN 300 (½" - 12")

DESCRIPTION

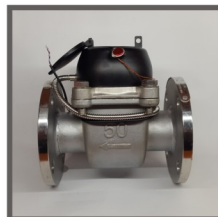
SHM Stainless Steel Flow Meters : Analog / Mechanical Flow Meter for Liquid are made from Stainless Steel SUS 316. Multi Jet and Woltman Type available with various size. Remote reading transmission system capable as units are equipped with built in sensor (optional).

APPLICATION

SHM Stainless Steel Flow Meters can be used for :
- Chemical, Corrosive, Food Processing, etc.

FEATURES

- Multi Jet Horizontal Type DN 15 - DN 50, Multi Jet Vertical Type DN 15 - DN 25, Woltman Type DN 50 - DN 300.
- Multi Jet, Dry Dial, Turbine Type.
- Easy Maintenance. Magnetic Drive reliable characteristic, long working life.
- Vacuum Sealed Register ensures the dial keep free from fog and frost , keep the reading clear in a long term service.
- Accuracy +/- 2%.
- Working Temperature 0.1-50°C for Cold Water and 0.1- 90°C for Hot Water.
- Water Pressure < /= 1.0 Mpa or 1.6 Mpa.
- Protection Grade : IP 68.
- ISO 9001 & ISO 4064.
- Warranty 2 Years (Full Services & Spare Parts).



TECHNICAL SPECIFICATIONS

DN	INCH	CLASS	CONNECTION TYPE	OVERLOAD FLOW / Qs		PERMANENT FLOW / Qp		TRANSITIONAL FLOW / Qt		MINIMUM FLOW / Qmin	MINIMUM READING		MAXIMUM READING	LENGTH (L)	WIDTH (B)	HEIGHT (H)	WEIGHT (KG)	CONNECTING THREAD (D)
				M3/H		L/H		M3	MM									
DN 15	1/2"	B	SCREW	3	1.5	120	30	0.00005	99.999	165	98	116	1.5	G 3/4 B				
DN 20	3/4"	B	SCREW	5	2.5	200	50	0.00005	99.999	190	98	117	1.7	G 1 B				
DN 25	1"	B	SCREW	7	3.5	280	70	0.00005	99.999	260	103.5	124	2.4	G 1 1/4 B				
DN 32	1 1/4"	B	SCREW	12	6	480	120	0.00005	99.999	260	103.5	124	2.7	G 1 1/2 B				
DN 40	1 1/2"	B	SCREW	20	10	800	200	0.00005	99.999	300	125	162	4.5	G 2 B				
DN 50	2"	B	SCREW	30	15	3000	450	0.00005	99.999	300	125	162	7.2	G 2 1/2 B				
	2"	B	VANE FLANGE	30	15	3000	450	0.00005	99.999	300	125	162	11	Flange				
	2"	B	FLANGE	30	15	3000	450	0.01	999999	200	165	272	12	Flange				
DN 65	2 1/2"	B	FLANGE	50	25	5000	750	0.01	999999	200	185	274	13	Flange				
DN 80	3"	B	FLANGE	80	40	8000	1200	0.01	999999	225	200	281	15	Flange				
DN 100	4"	B	FLANGE	120	60	12000	1800	0.01	999999	250	220	291	19	Flange				
DN 125	5"	B	FLANGE	200	100	20000	3000	0.01	999999	250	250	312	22	Flange				
DN 150	6"	B	FLANGE	300	150	30000	4500	0.01	999999	300	285	341	47	Flange				
DN 200	8"	B	FLANGE	500	250	50000	7500	0.01	999999	350	340	384	48	Flange				
DN 250	10"	B	FLANGE	800	400	80000	1200	0.01	999999	450	405	435	110	Flange				
DN 300	12"	B	FLANGE	1200	600	120000	1800	0.01	999999	500	445	486	115	Flange				

SHM OVAL GEAR FLOW METERS

Analog / Mechanical Oil / Diesel Fuel Meter Cold -20 - 100°C Size DN 15 - DN 50 (1/2" - 2")

DESCRIPTION

SHM Oval Gear Flow Meters : Analog / Mechanical Flow Meter for Oil / Solar are made from epoxy coated cast iron body. It has cumulative flow count and zero returning function. Feature large flow range, low pressure loss, large viscosity range, easy installation, high accuracy with easy calibration.

APPLICATION

It is applicable to all types of liquid measuring, such as crude oil, diesel, gasoline, etc. Different materials selected can meet the petroleum, chemical, pharmaceutical, food, metallurgy, electricity, transportation, and other fields of liquid measurement.

FEATURES

- Above DN 20 available on request
- Material : Cast Iron
- Max. Pressure : 1.6 Mpa
- Liquid Viscosity : 2 - 200 mpa.s
- Working Temperature : Cold Type -20 - 100°C
Hot Type 120 - 200°C (req)
- Max. Error : +/-0.5%
- Counter reading : Litre
- Warranty 2 Years (Full Services & Spare Parts).



TECHNICAL SPECIFICATIONS

SIZE		VISCOSITY 0-2000cPs FLOW RANGE (M3/H)		DIMENSION					
				COLD TYPE				HOT TYPE	
DN	INCH	3-200 ACCURACY 0.5	200-2000 ACCURACY 0.5	L	B	H	WEIGHT	H	WEIGHT
					(MM)		(KG)	(MM)	(KG)
DN 10	3/8"	0.1-0.6	0.04-0.2	150	100	213	6		
DN 15	1/2"	0.25-1.5	0.15-1	170	118	226	8		
DN 20	3/4"	0.5-3	0.3-1.5	200	150	238	11		
DN 25	1"	1-6	0.6-3	260	180	246	18	406	
DN 40	1 1/2"	2.5-15	1.5-10	245	180	271	20	445	
DN 50	2"	4-24	2.4-15	340	250	379	46	700	
DN 65	2 1/2"	6-40	4-20	420	325	443	87		
DN 80	3"	8-50	5-26	420	325	443	87	760	
DN 100	4"	16-100	10-50	515	418	467	160	785	
DN 150	6"	32-190	19-100	540	515	565	245	865	
DN 200	8"	54-340	34-190	650	650	624	400	925	

SHM ROOTS FLOW METERS

Analog / Digital Oil / Diesel Fuel Meter Cold -10 - 60°C Size DN25 - DN 150 (1" - 6") and Hot -20 - 120°C Size DN 50 - DN 150 (2" - 6")

DESCRIPTION

SHM Roots Flow Meters : Analog / Mechanical Roots Flow Meter for Oil / Solar is an epoxy coated aluminium body and rotor, iron cover, copper shaft, and stainless steel bearing. It has high accuracy, good realibility, light weight, long life, and easy installation. Its register are both of **resettable & totalizer** for convenient use, and it can be coupled with the control device to get remote measurement.

APPLICATION

It widely used in Petroleum, Chemical, Electric Power, Metallurgy, Transportation, Medicine, Food Processing, Defense Commerce, Oil, and other fluids accurate measurement.

FEATURES

- Working Temperature : Cold -10 - 60°C
: Hot -20 - 120°C
- Pulse Options Available
- Max. Pressure : 1.6 Mpa
- Max. Error : +/-0.5%
- Counter reading : Litre
- Warranty 2 Years (Full Services & Spare Parts).



TECHNICAL SPECIFICATIONS

SIZE		VISCOSITY 0-2000 cPs FLOW RANGE (M3/H)		DIMENSION					
DN	INCH	3-150		COLD TYPE			WEIGHT (KG)	HOT TYPE	
		ACCURACY 0.5		L	B	H		H	WEIGHT
					(MM)			(MM)	(KG)
DN 15	½"	0.4-3		160	95	227	6		
DN 25	1"	1-6		180	110	297	8	427	12
DN 40	1 ½"	2.5-16		240	178	338	21	468	30
DN 50	2"	4-25		265	178	362	26	492	41
DN 65	2 ½"	6-50		265	252	341	40	471	52
DN 80	3"	10-60		265	252	341	40	471	52
DN 100	4"	16-100		350	310	423	86	553	110
DN 150	6"	32-200		560	455	550	202	680	215

SHM SCRAPER OIL FLOW METERS

Analog / Digital Oil / Diesel Fuel Meter Cold -20 - 80°C & Hot 200° C Size DN 50 & DN 80 (2" & 3")

DESCRIPTION

SHM Scraper Oil flow Meters are a three rotor flow meter, volumetric type, positive displacement, continuously measures the flow of the liquid in a closed conduit, low friction, long service life, strong adaptability if viscosity changes, widely used for crude oil and refined oil.

APPLICATION

Measured medium ; crude oil, bitumen, glue, ink, pulp, animal feed, cement mix, lpg, chemical process, toothpaste, petroleum, cosmetics, fuel oil, lubricants, aviation refueling, pharmaceuticals, beverages, food, alcohol, liquefaction. Various liquid media such as gas, paint, acid, alkali salt.

FEATURES

- Pressure : 1.6 / 2.5 / 4.0 / 6.3 Mpa.
- Temperature : -20-80°C ; Option up to 200° C.
- Viscosity : 2-20000 mPa.s
- Size : DN 50, DN 80
- Flange : GB/T9118-2000 or customized.
- Material : Shell : Cast Iron / Aluminium / SS.
Rotor : SS.
- Counter : Mechanical / Digital Display.
- Output : 4-20 mA, Pulse, MODBUS.
- Explosion Proof : EXiallBT4.
- IP 65
- Warranty 2 Years (Full Services & Spare Parts).



TECHNICAL SPECIFICATIONS

SIZE		FLOW RANGE (L/M) VISCOSITY (mPa.s)		DIMENSION					
DN	INCH	3-150		COLD TYPE			WEIGHT (KG)	HOT TYPE	
		ACCURACY 0.5		L	B	H		H	WEIGHT
				(MM)				(MM)	(KG)
DN 50	2"	50-417							
DN 80	3"	133-1000							

SHM SPIRAL ROTOR FLOW METERS

Analog / Digital Heavy Fuel Oil Flow Meter Cold -20 - 80° C & Hot 60 - 180° C Size DN 25 - DN 300 (1" - 12")

DESCRIPTION

SHM Spiral Rotor Flow Meter is a heavy fuel oil flow meter. Using a pair of spiral rotor for its movement, make no pulsation, low noise, high precision. High reliability, large flow, strong environmental adaptability.

APPLICATION

It is widely used in petrochemical, metallurgy, electronics, engineering management control for commercial purpose.

FEATURES

- Material : Cast Iron, Aluminium, SS316L
- Accuracy : 0.5%
- Temperature : -20-80° C & 60-180° C
up to 250° C (Optional)
- Max Pressure : Cast Iron Below DN 100 = 4.0 MPa
Cast Iron Upper DN 150 = 2.5 MPa
SS316L = 1.6, 2.0, 2.5 MPa
- Liquid Viscosity : 0.3-2000 mPa.s
- Protection : IP 65
- Explosion Proof : Exd II BT4
- Output : Pulse, 4-20mA, MODBUS RS 485
(Optional)
- Warranty 2 Years (Full Services & Spare Parts)



TECHNICAL SPECIFICATIONS

SIZE		VISCOSITY (mPa.s)							LENGTH (L)	HIGH (H)	WEIGHT
		0.3-2		2-5	5-15	15-50	50-400	400-2000	(MM)	(KG)	
DN	INCH	GASOLINE	KEROSENE	DIESEL	LIGHT OIL	MEDIUM OIL	HEAVY OIL	HIGH VISCOSITY FLUID			
		M3 / HOUR									
DN 25	1"	2.5-9	1.5-10	1-10	1-10	0.8-10	0.5-10	0.5-6	300	420	29
DN 40	1 1/2"	4-22	3.5-22	3-25	2.5-25	2-25	2-25	1.5-14	300	450	40
DN 50	2"	8-42	7-42	6-45	5-45	4-45	4-45	3-23	340	525	62
DN 80	3"	20-100	15-100	10-100	8-100	6-100	5-100	5-40	380	580	94
DN 100	4"	25-140	20-140	18-180	16-180	8.5-180	7-180	7-65	440	660	146
DN 150	6"	50-250	30-270	25-270	20-270	15-270	10-270	8.5-100	540	740	238
DN 200	8"	70-360	50-400	40-400	30-400	25-400	15-400	13-160	550	820	337
DN 250	10"	100-550	65-550	55-650	45-600	40-600	35-600	25-240	700	910	600
DN 300	12"	180-800	100-900	100-900	80-950	60-950	50-900	45-400	800	1010	855

SHM ENGINE & BOILER FLOW METERS

Digital Oil / Diesel Engine & Boiler Fuel Meter Cold -20 - 80°C Size DN 8 - DN 10 (1/4" - 3/8")

DESCRIPTION

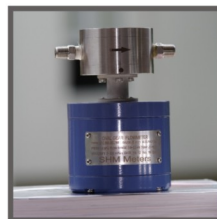
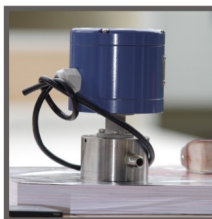
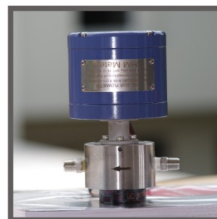
SHM Micro Oil Flow Meters is a digital flow meter made from SS304, it has small flow, simple structure, high accuracy, convenient use and long life. No specific viscosity, no minimum flow, no special pressure requirement. Display shows total flow, cumulative flow, instant flow and zero resetable.

APPLICATION

Small flow, Boiler Fuel, Oil, Chemical & other liquids. Also suitable for small flow of various liquid foods such as alcohol, milk & vegetable oil as material is stainless steel.

FEATURES

- Material : Body, Gear & Axis = SS 304
Bearing = Graphite
- Connection : Flange
- Size : DN 8, DN 10, DN 15
- Pressure : 1.0 / 1.6 / 2.5 mPa
- Accuracy : 0.5%
- Temp : -20 - 80° C
- Viscosity : 0.6-500 mPa.s
- Warranty 2 Years (Full Services & Spare Parts)



TECHNICAL SPECIFICATIONS

SIZE		VISCOSITY 0-2000 cPs FLOW RANGE (M3/H)		DIMENSION					
DN	INCH	3-200		COLD TYPE			WEIGHT (KG)	HOT TYPE	
		ACCURACY 0.5		L	B	H		H	WEIGHT
				(MM)				(MM)	(KG)
DN 8	1/4"	30-300 L/H							
DN 10	3/8"	0.1-0.6							

SHM ELECTROMAGNETIC FLOW METERS

Digital Electromagnetic Conductive Liquid Meter Integrated Type 0 - 80°C and Separate Type 0 - 140°C
Size DN 15- DN 2000 (½" - 80") (**BONUS = VOLTAGE REGULATOR**)

DESCRIPTION

SHM Electromagnetic Flow Meters : Digital Flow Meter for Conductive Liquid. Tube and Flange are made from Stainless Steel, Electrode from titanium & lining from PTFE. No movable parts in this meters, simple structure, reliable. The accuracy are not affected by the change of measured medium's pressure, density, temperature, viscosity & other. Power consumption below 20w.

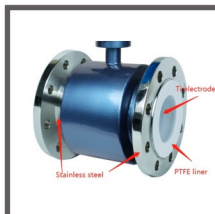
APPLICATION

Widely applied in the fields of chemical, petroleum, metallurgy, food and beverage & pharmaceutical industry, water & waste water, agriculture & irrigation, paper making.

FEATURES

- Accuracy : +/- 0.5%
- Measurement Range : 0.01-15 m/s
- Flange Connection : PN16 / PN40 / ANSI 150
- Protection Grade : IP 65, (req. IP 67, IP 68)
- Electrode material : Titanium / Hastelloy C
- Lining Material : Polytetrafluoroethylene (PTFE)
- Power Supply : AC220V / DC24V
- Signal Output : Analog 4-20mA, 0Hz-50Khz, RS 485, RS 232, **MODBUS**, HART, PROFIBUS-DP.
- ISO 9001 & ISO 4064.
- Warranty 2 Years (Full Services & Spare Parts).

TECHNICAL SPECIFICATIONS



SIZE (MM)	NOMINAL PRESSURE (Mpa)	FLOW RATE (M3/H)		DIMENSION					SIZE (MM)	NOMINAL PRESSURE (Mpa)	FLOW RATE (M3/H)		DIMENSION				
		MIN FLOW 0.5 M/S	MAX FLOW 15 M/S	LENGTH (MM)	WIDTH (MM)	HEIGHT (MM)		WEIGHT INTEGRATED TYPE (KG)			MIN FLOW 0.5 M/S	MAX FLOW 15 M/S	LENGTH (MM)	WIDTH (MM)	HEIGHT (MM)		WEIGHT INTEGRATED TYPE (KG)
DN 15	4.0	0.31	4.24	200	95	190	265	10	DN 350	1.6	173.18	5195.40	500	520	590	670	145
DN 20	4.0	0.56	9.54	200	105	200	275	12	DN 400	1.6	226.19	6785.84	600	580	645	725	180
DN 25	4.0	0.88	16.96	200	110	210	285	14	DN 450	1.6	286.27	8588.32	600	640	695	775	215
DN 32	4.0	1.44	43.42	200		220	310		DN 500	1.6	353.42	10602.87	600	715	750	830	245
DN 40	4.0	2.26	67.85	200	150	230	320	16	DN 600	1.6	508.93	15268.14	600	840	855	940	335
DN 50	4.0	3.53	106.02	200	165	245	335	17	DN 700	1.6	692.72	20781.63	700	910	970	1055	435
DN 65	4.0	5.97	179.18	200	185	265	355	25	DN 800	1.6	904.77	27143.36	800	1025	1090	1170	545
DN 80	4.0	9.04	271.43	200	200	280	370	29	DN 900	1.6	1145.11	34353.31	900	1125	1190	1270	655
DN 100	4.0	14.13	424.11	250	235	300	390	31	DN 1000	1.6	1413.71	42411.50	1000	1255	1290	1380	810
DN 125	4.0	22.08	662.67	250		330	420		DN 1200	1.0	2035.75	61072.56	1200	1455	1530	1610	875
DN 150	4.0	31.08	954.25	300	300	360	450	41	DN 1400	1.0	2770.88	83126.54	1400	1675	1740	1820	1235
DN 200	1.6	56.54	1696.46	350	340	420	505	45	DN 1600	1.0	3617.11	108573.44	1600	1915	1950	2050	1555
DN 250	1.6	88.35	2650.71	400	405	480	560	50	DN 1800	0.6	4580.44	137413.26	1800	2045	2170	2250	2085
DN 300	1.6	127.23	3817.03	500	460	530	610	60	DN 2000	0.6	5654.88	169646	2000	2265	2380	2460	2610

SHM INSERTION ELECTROMAGNETIC FLOW METERS

Digital Electromagnetic Conductive Liquid Meter 0 - 60°C Size DN 200 - DN 2000 (8" - 80")

DESCRIPTION

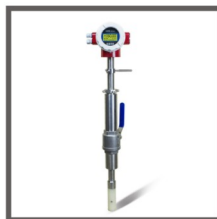
SHM Insertion Electromagnetic Flow Meters body are made from SS304 and the electrode are made from SS316L. The device are combining both transducer and transverter. Which is used to measure the volume and flow rate of various conducting liquid inside the pipeline.

APPLICATION

A variety of liquid can be accommodated : ultra pure liquids, potable water, chemicals, raw sewage, reclaimed water, cooling water, river water, plant effluent, petrol, etc. Widely used in metallurgy, electric power plant, irrigation, city water company, energy monitor fields.

FEATURES

- Power Supply : 24V or 220V
- Applicable for pipe diameter 200-2000mm
- Flow Rate : 1-10 m/s
- Accuracy : +/- 1.5%
- Medium Conductivity : 5 ms/cm
- Pressure : 1.6 Mpa
- Temperature : 60°C
- Output Signal : DC 0-10mA, 4-20mA
- Warranty 2 Years (Full Services & Spare Parts)



SHM SANITARY EMF METERS

Digital Sanitary Electromagnetic Conductive Liquid Meter -25 - 140°C Size DN 3 - DN 3000 (1½" - 80")

DESCRIPTION

SHM Sanitary Electromagnetic Flow Meters : Digital Flow Meter for Conductive Liquid are made from stainless steel SUS 316 L and lining material from PTFE capable for strong corrosive medium such as strong acids & alkali. High performance, high reliability.

APPLICATION

SHM Sanitary Electromagnetic Flow Meters widely used in steel, electricity, petroleum, chemical, coal, metallurgy, paper making, water supply and drainage, food, medicine industry, etc. General process test of liquid : Cement Water, Paper Pulp, Pastry Liquid, Mud, Fruit Slurry, and any other serious fluids.

FEATURES

- Main Power : AC220V 50Hz / DC24V.
- Power Consumption <15w
- Big backlighting LCD Screen display instantaneous flow, total flow, and percentage of flow as well as alarm display, four thin-film touch nubs for data set.
- Forward and Reverse total quantity.
- Accuracy +/- 0.5%. Protection Grade : IP 65.
- Anti failure clock can save records for 16 times.
- Signal Output : Analog 4-20mA, 0Hz-50 KHz, 2 alarm outputs : high and low limit alarm communication : RS 485, RS 232, MODBUS, HART, PROFIBUS-DP.
- ISO 9001 & ISO 4064.
- Warranty 2 Years (Full Services & Spare Parts).

TECHNICAL SPECIFICATIONS

SIZE	PRESET PRESSURE	FLOW RATE 15 M/S (MAX)	L	W	H	D1	DN	PRESET PRESSURE	FLOW RATE 15 M/S (MAX)	L	W	H	D1
		FLOW (M3/H)							FLOW (M3/H)				
(MM)						(MM)							
DN 3	4.0		192	90	140	60	DN 200	1.6	1696	350	335	385	295
DN 6	4.0		192	95	145	65	DN 250	1.6	2650	450	405	455	355
DN 10	4.0	4.24	192	90	140	60	DN 300	1.6	3817	500	460	510	410
DN 15	4.0	9.54	192	95	145	65	DN 350	1.0	5195	500	500	550	460
DN 20	4.0	16.96	192	105	155	75	DN 400	1.0	6785	500	565	615	515
DN 25	4.0	26.50	192	115	165	85	DN 450	1.0	8588	550	615	665	565
DN 32	4.0	43.42	192	135	180	100	DN 500	1.0	10602	550	670	720	620
DN 40	4.0	67.85	192	145	195	110	DN 600	1.0	15268	600	780	830	725
DN 50	4.0	106.02	192	160	210	125	DN 700	0.6	20781	700	860	910	810
DN 65	1.6	179.18	250	180	230	145	DN 800	0.6	27143	800	975	1025	920
DN 80	1.6	271.43	250	195	245	160	DN 900	0.6	34353	900	1075	1125	1020
DN 100	1.6	424.11	250	215	265	180	DN 1000	0.6	42411	1000	1175	1225	1120
DN 125	1.6	662.67	250	245	295	210	DN 1200	0.6	61072	1200	1400	1450	1340
DN 150	1.6	954.28	300	280	330	240	DN 1400	0.6	83126	1400	1620	1670	1560



SHM TURBINE DIGITAL FLOW METERS

Digital Stainless Steel Liquid / Gas Meter 80° C Size DN 4 - DN 300 (5/8" - 12")

DESCRIPTION

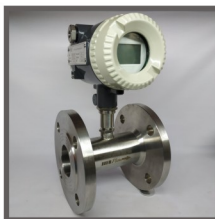
SHM Turbine Digital Flow Meters : Digital Flow Meter for Liquid/Gas are made from Stainless Steel 316/304. Multi blades rotor mechanism measuring flow & accumulative flow values. Simple structure, light weight, high accuracy, good repeatability, flexible reaction, convenient installation.

APPLICATION

Widely applied to measure the liquid with kinematic viscosity under $5 \times 10^{-6} \text{ m}^2/\text{s}$ & have no impurity of fiber, grain, etc. Also measure compressed /ordinary air (oxygen, natural / coal gas, etc). Extensively used in the fields of oil, chemical, defense, science, measuring, etc.

FEATURES

- Clamp On and Flange Connection
- High accuracy : $\pm 0.5\%$
- Good repeatability : $0.05\% - 0.2\%$
- Measurement Range : 1:10, 1:15 1:20
- Material : Stainless Steel 316 / 304
- Medium Temperature : $-2 - 80^\circ \text{C}$
- Signal Output : RS485, 4-20mA, HART
- Supply Power : 24V DC
- IP 65
- Warranty 2 Years (Full Services & Spare Parts)



SIZE		LIQUID				GAS				DIMENSION			WEIGHT (KG)
		CONNECTION	PRESSURE (MPa)	REGULAR FLOW RATE (M3/H)	EXPANDING FLOW RATE (M3/H)	CONNECTION	PRESSURE (MPa)	FLOW RATE (M3/H)	INITIAL FLOW RATE	LENGTH	WIDTH	HEIGHT	
(MM)	(INCH)									(MM)			
DN 4	5/8"	G 1/2	6.3	0.04-0.25	0.04-0.4					295			
DN 6	5/12"	G 1/2	6.3	0.1-0.6	0.06-0.6					330			
DN 10	1/4"	G 1/2	6.3	0.2-1.2	0.15-1.5					450			
DN 15	1/2"	G 1 / FLANGE	6.3 / 2.5 FL	0.6-6	0.4-8					75			
DN 20	3/4"	G 1 / FLANGE	6.3 / 2.5 FL	0.8-8	0.45-9					80			
DN 25	1"	G 5/4 FLANGE	6.3 / 2.5 FL	1-10	0.5-10	FLANGE / THREAD	4.0	0.7-7	0.6	100			
DN 32	1 1/4"	G 2 / FLANGE	6.3 / 2.5 FL	1.5-15	0.8-15					140			
DN 40	1 1/2"	G 2 / FLANGE	6.3 / 2.5 FL	2-20	1-20	FLANGE / THREAD	4.0	4-40	2.5	140			
DN 50	2"	FLANGE	2.5	4-40	2-40	FLANGE	4.0	10-100	3.5	150			
DN 65	2 1/2"	FLANGE	2.5	7-70	4-70					170			
DN 80	3"	FLANGE	2.5	10-100	5-100	FLANGE	1.6	15-300	4	200			
DN 100	4"	FLANGE	2.5	20-200	10-200	FLANGE	1.6	20-400	5	220			
DN 125	5"	FLANGE	1.6	25-250	13-250					250			
DN 150	6"	FLANGE	1.6	30-300	15-300	FLANGE	1.6	50-1000	8	300			
DN 200	8"					FLANGE	1.6	100-2000	20	360			
DN 250	10"					FLANGE	1.6	150-3000	30				
DN 300	12"					FLANGE	1.6	200-4000	40				

SHM VORTEX-TP FLOW METERS

Digital Vortex with Temperature & Pressure Sensor Steam/ Gas/ Liquid Meter -40 - 250° / 350° C
Size DN 15 - DN 300 (1/2" - 12")

DESCRIPTION

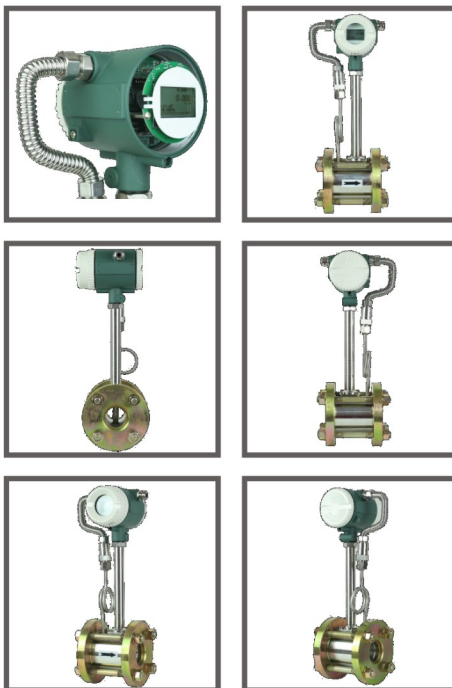
SHM Vortex - TP Flow Meters : Digital Flow Meter for Gas, Liquid & Vapor. Body, shedder and sensor made from Stainless Steel SS 316L. Converter Housing made from epoxy coated aluminium capable in harsh process environment.

APPLICATION

SHM Vortex-TP Flow Meter series is suitable for oil, chemical industry, metallurgy, heating power, spinning, papermaking, etc. Measure over-heating / saturation vapor, compressed /ordinary air (oxygen, nitrogen, hydrogen, natural / coal gas, etc), water & liquid (petrol,alcohol,benzene, etc).

FEATURES

- Pressure : DN25-200 = 4.0 Mpa
DN250-300 = 1.6 Mpa
- Medium Temperature : -40-250°C, -40-350°C (opt)
- Service Voltage : 24VDC, 3.6V Battery
- Protection Grade : IP 65, IP 68 (opt)
- Medium : Gas, Liquid, Steam
- Signal Output : Analog 4-20mA, 0Hz-50Khz,
RS 485, RS 232, MODBUS,
HART, PROFIBUS-DP
- ISO 9001 & ISO 4064.
- Warranty 2 Years (Full Services & Spare Parts).



TECHNICAL SPECIFICATIONS

SIZE (MM)	LIQUID		GAS		DIMENSION				
	RANGE (M3/H)	OUTPUT FREQUENCY RANGE (Hz)	MEASUREMENT RANGE (M3/H)	OUTPUT FREQUENCY RANGE (Hz)	L (MM)	D (MM)	H (MM)	CH (MM)	WEIGHT (KG)
DN 15	1-6	96-580	3-48	290-4600	70/90	54	325	385	10
DN 20	1.1-10	42-390	5-51	200-3100	70/90	54	325	385	10
DN 25	1.5-10	32-214	9-55	190-1178	70/90	54	325	385	10
DN 40	2.5-25	13-130	22-200	115-1011	85	79	325	385	11
DN 50	3.5-35	9-93	36-320	96-854	85	89	330	390	12
DN 65	4-80	7-72	50-520	80-610	85	104	340	400	15
DN 80	10-100	6-65	70-628	45-402	90	119	360	420	16
DN 100	15-150	5-50	130-1100	43-367	90	139	380	440	18
DN 125	30-200	2.2-41	260-1700	24-311	95	168	405	465	22
DN 150	40-350	4-33	280-2240	27-221	100	194	430	490	32
DN 200	80-650	3-26	580-4200	24-167	102	248	485	545	40
DN 250	120-950	3-19	970-5500	20-112	115	300	540	600	68
DN 300	180-1800	2-22	1400-8000	17-95	130	350	590	650	90

SHM ULTRASONIC FLANGE FLOW METER

Digital Fresh / Sewage / Sea Water Meter Cold 0-30°C and Hot 0-130°C Size DN 15 - DN 300 (1/2" - 12")

DESCRIPTION

SHM Ultrasonic Flange Flow Meter is a newly developed unique advance transit time measurement technology, low power consumption, wide measuring ratio, stable and reliable measurement. The conventional water meter only operable at higher flow rate and are insensitive to small flow rate. This water meter can help that condition, and highly adaptable to diversified industrial conditions.

APPLICATION

Water, Sewage, Sea water. Other liquid need to customized.

FEATURES

- Medium Temperature : 0-30°C & 0-130°C
- Working Pressure : 1.6 / 2.5 (optional) Mpa
- Communication Interface : RS485/ USART/ Infrared
- Output Signal : OCT/Pulse/4-20mA
- Power Supply : Lithium Battery 3.6V
- Protection Class : IP68
- Power Consumption : <2.7AH/year
- GBT 778.1-2007
- ISO 4064
- JJG 162-2009
- Warranty 2 Years (Full Services & Spare Parts).



TECHNICAL SPECIFICATIONS

SIZE		PRESSURE (Mpa)	FLOW RATE				DIMENSION			WEIGHT (KG)	CONNECTION					
			MIN FLOW	TRANSITIONAL FLOW	PERMANENT FLOW	MAX FLOW	L	B	H							
DN	INCH									M3 / HOUR				(MM)		
							DN 15			1/2"		2.5	0.0125	0.02	2.5	3.125
DN 20	3/4"	2.5	0.016	0.03	3.2	4	130	148	197	2.3						
DN 25	1"	2.5	0.020	0.03	4	5	160	148	200	2.5						
DN 32	1 1/4"	2.5	0.032	0.0504	6.3	7.875	180	148	208	2.8						
DN 40	1 1/2"	2.5	0.1	0.16	20	25	200	148	212	3.3						
DN 50	2"	1.6	0.4	0.64	40	50	200	152	201	10	FLANGE					
DN 65	2 1/2"	1.6	0.63	1.008	63	78.75	200	158	210	11.5						
DN 80	3"	1.6	1	1.6	100	125	225	188	226	13.6						
DN 100	4"	1.6	1.6	2.56	160	200	250	208	244	18.6						
DN 125	5"	1.6	2	3.2	200	250	275	234	265	23.5						
DN 150	6"	1.6	2.5	4	250	312.5	300	228	289	30						
DN 200	8"	1.6	4	6.4	400	500	350	330	419	35.5						
DN 250	10"	1.6	4	6.4	400	500	450	394	466	58						
DN 300	12"	1.6	6.3	10.08	630	787.5	500	446	510	76						

SHM ULTRASONIC HANDHELD FLOW METERS

Digital Handheld Ultrasonic Liquid Meter Measuring DN 15 - DN 6000 (1/2" - 150")

DESCRIPTION

SHM Ultrasonic Flow Meters is designed to measuring and checking flow velocity, flow rate, accumulation and heat quantity of different liquids. The main board is suitable for all kind of transducers (clamp-on, insertion, standard, etc). Its up to date, high function, low price, good reliability. great accuracy, easy to use.

APPLICATION

A variety of liquid can be accommodated : ultra pure liquids, potable water, chemicals, raw sewage, reclaimed water, cooling water, river water, plant effluent, petrol, etc. Widely used in metallurgy, electric power plant, irrigation, city water company, energy monitor fields.

FEATURES

- Power Supply : Battery
- Material : Body ABS
- Accuracy Class : 0.5 %
- Signal Output : 4-20 mA / RS232
- Protection Grade : IP65
- Temperature : < 80 C
- Connection : Clamp On
- Warranty 2 Years (Full Services & Spare Parts).



TECHNICAL SPECIFICATIONS

TRANSDUCER			
WORK FREQUENCY	1 MHz		
PIPE DIAMETER (mm)	DN15-DN100	DN50-DN700	DN300-DN6000
FLUID TEMPERATURE	-30-90 C	-30-90 C	-30-90 C
OUTER SIZE	50x30x29 mm	100x40x30 mm	120x55x45 mm
WEIGHTS	175 g	259 g	535 g

SHM ULTRASONIC PRINTABLE FLOW METERS

Digital Ultrasonic Printable Liquid Meter Measuring DN 15 - DN 6000 (1/2" - 150")

DESCRIPTION

SHM Ultrasonic Flow Meters is designed to measuring and checking flow velocity, flow rate, accumulation and heat quantity of different liquids. The main board is suitable for all kind of transducers (clamp-on, insertion, standard, etc). Its up to date, high function, low price, good reliability. great accuracy, easy to use.

APPLICATION

A variety of liquid can be accommodated : ultra pure liquids, potable water, chemicals, raw sewage, reclaimed water, cooling water, river water, plant effluent, petrol, etc. Widely used in metallurgy, electric power plant, irrigation, city water company, energy monitor fields.

FEATURES

- Power Supply : AC220V
- Material : Body Metal
- Accuracy Class : 0.5%
- Signal Output : 4-20 mA / RS485
- Protection Grade : IP65
- Temperature : < 80 C
- Connection : Clamp On
- Warranty 2 Years (Full Services & Spare Parts).



TECHNICAL SPECIFICATIONS

TRANSDUCER			
WORK FREQUENCY	1 MHz		
PIPE DIAMETER (mm)	DN15-DN100	DN50-DN700	DN300-DN6000
FLUID TEMPERATURE	-30-90 C	-30-90 C	-30-90 C
OUTER SIZE	50x30x29 mm	100x40x30 mm	120x55x45 mm
WEIGHTS	175 g	259 g	535 g

SHM ULTRASONIC REMOTE FLOW METERS

Digital Remote Ultrasonic Liquid Meter Measuring DN 15 - DN 6000 (1/2" - 150")

DESCRIPTION

SHM Ultrasonic Flow Meters is designed to measuring and checking flow velocity, flow rate, accumulation and heat quantity of different liquids. The main board is suitable for all kind of transducers (clamp-on, insertion, standard, etc). Its up to date, high function, low price, good reliability. great accuracy, easy to use.

APPLICATION


A variety of liquid can be accommodated : ultra pure liquids, potable water, chemicals, raw sewage, reclaimed water, cooling water, river water, plant effluent, petrol, etc. Widely used in metallurgy, electric power plant, irrigation, city water company, energy monitor fields.

FEATURES

- Power Supply : AC220V
- Material : Body ABS
- Accuracy Class : 0.5%
- Signal Output : 4-20 mA / RS485
- Protection Grade : IP65
- Temperature : < 80 C
- Connection : Clamp On
- Warranty 2 Years (Full Services & Spare Parts).



TECHNICAL SPECIFICATIONS

TRANSDUCER			
WORK FREQUENCY	1 MHz		
PIPE DIAMETER (mm)	DN15-DN100	DN50-DN700	DN300-DN6000
FLUID TEMPERATURE	-30-90 C	-30-90 C	-30-90 C
OUTER SIZE	50x30x29 mm	100x40x30 mm	120x55x45 mm
WEIGHTS	175 g	259 g	535 g

SHM CORIOLIS MASS FLOW METERS

Digital Mass Flow Meter Cold -200 - 350°C Size DN 3 - DN 200 (1/6" - 8")

DESCRIPTION

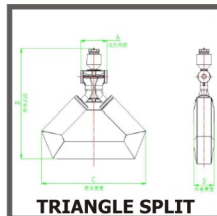
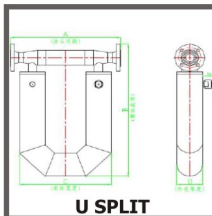
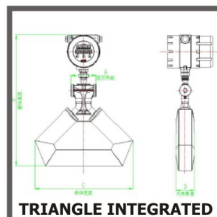
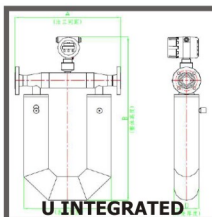
SHM Coriolis Mass Flow Meter measure flow according to Micro Motion and Coriolis principle. It can measure fluid directly in a sealed pipeline. Consist of two sections : Sensor & Signal Transmitter.

APPLICATION

Can be used in the following fields ; chemical, petroleum, lipids (vegetable oil, animal fats & others), pharmaceutical, painting, paper making, textile printing & dyeing, fuel (crude oil, heavy oil, coal slurry, lubricant & others), food (gas dissolving beverages, health drink & others), transportation, low temperature fluid (liquid oxygen / nitrogen), high temperature fluid, high pressure fluid.

FEATURES

- Accuracy (Liquid) : +/- 0.1-0.2%
- Repeatability : 1/2 measurement accuracy
- Density (Liquid) : Range 0.3-3000 g/cm3
- : Accuracy +/- 0.002 g/cm3
- Temperature : Range -200-350° C
- : Accuracy +/- 1%
- Pressure : 0-4.0 MPa
- Material : Measuring Tube SS316L
- : Housing SS304
- Explosion Proof : Exd (ia) II C T6Gb
- Warranty 2 Years (Full Services & Spare Parts)



TECHNICAL SPECIFICATIONS

DN	FLOW	ZERO STABILITY			RATED PRESSURE (MPa)	DIMENSION (MM)								WEIGHT (KG)
	RANGE	(KG/H)				U TYPE		U-INT	U-SPL	TRIANGLE TYPE		TRI-INT	TRI-SPL	
		KG/H	0.2%	0.15%		0.1%	L	B	H	H	L	B	H	
DN 3	0-96-120	0.018	0.012	0.012	4.0					250	54	420	290	19
DN 6	0-540-660	0.099	0.066	0.066	2.0					360	70.5	550	420	22
DN 8	0-960-1200	0.18	0.12	0.12	2.0					395	70.5	565	435	23
DN 10	0-1500-1800	0.27	0.18	0.18	2.0	450	60	590	370	370	70.5	525	395	24
DN 15	0-3000-4200	0.63	0.42	0.42	2.0	456	60	590	370	405	70.5	540	410	25
DN 20	0-6000-7800	1.17	0.78	0.78	1.6	540	108	750	530					34
DN 25	0-10200-13500	2.025	1.35	1.35	1.6	540	108	770	550					35
DN 32	0-18000-24000	3.6	2.4	2.4	1.6	545	108	810	590					45
DN 40	0-30000-36000	5.4	3.6	3.6	1.2	600	140	930	710					55
DN 50	0-48000-60000	9	6	6	1.2	606	140	955	735					60
DN 80	0-120000-160000	2.4	16	16	8	866	220	1177	957					150
DN 100	0-222000-270000	40.5	27	27	8	950	273	1335	1115					245
DN 150	0-480000-600000	90	60	60	6	1300	324	1593	1373					350
DN 200						1300	400	1600	1380					

SHM BULKSTRAIN STRAINER

Strainer 0 - 150°C Size DN 50 - DN 300 (2" - 12")

DESCRIPTION

SHM Bulkstrain Strainer is a high quality ductile iron basket strainer, installed to the pipeline system to protect equipment (ie. Flow meter or pump) from unwanted debris. Unique design, stainless steel mesh inside, high flow rate, epoxy coating, resist corrosion for long term use.

APPLICATION

Widely used in cold and hot water up to 150° C system, air conditioning system, boiler, raw water, etc, to ensure water clarity and prevent equipment from getting clogged and extend equipment life.

FEATURES

- High Grade Epoxy Coating.
- Cold and Hot Water up to 150° C.
- Easy Installation and Maintenance.
- Warranty 1 Year



TECHNICAL SPECIFICATIONS

SIZE		LENGTH (MM)	WEIGHT (KG)
(MM)	(INCH)		
DN 50	2"	150	8
DN 65	2 1/2"	150	9
DN 80	3"	170	11
DN 100	4"	180	14
DN 125	5"	180	16
DN 150	6"	200	23
DN 200	8"	220	34
DN 250	10"	240	48
DN 300	12"	240	67

SHM U-STRAINER

U-type Water / Oil / Diesel Fuel Strainer Size DN 40 - DN 200 (1 1/4" - 8")

DESCRIPTION

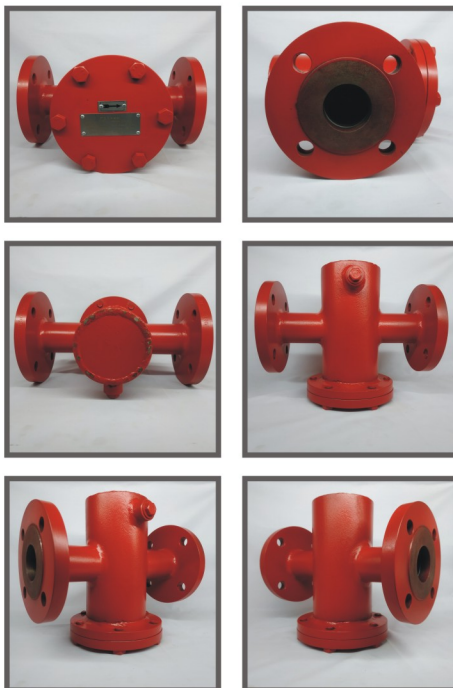
SHM U-Strainer is a high quality ductile iron epoxy coated strainer with stainless steel mesh inside, installed to the pipeline system to protect equipment and prolong their working life (ie. Flow meter / pump). Unique design, high flow rate, resist corrosion for long term use.

APPLICATION

Water works and water resource project, cold and hot water system up to 150° C, air conditioning system, boiler, raw water, environment protection, public facilities, power and public utilities, building industry, petroleum, chemical, steel, metallurgy, paper making industry.

FEATURES

- Provides wider filtration.
- Great flow rate.
- Ductile Iron with High Grade Epoxy Coating.
- Cold and Hot Water/Oil/Diesel Fuel up to 150° C.
- Flange Connection JIS 10K / PN16
- Working Pressure 16 Bar.
- Stainless Steel Screen / Filter.
- Easy Installation and Maintenance.
- Warranty 1 Year.



TECHNICAL SPECIFICATIONS

SIZE		DIMENSION			WEIGHT (KG)
(MM)	(INCH)	LENGTH	WIDTH (MM)	HEIGHT	
DN 40	1 1/2"				
DN 50	2"				
DN 65	2 1/2"				
DN 80	3"				
DN 100	4"				
DN 150	6"				
DN 200	8"				

SHM Y-STRAINER

Y-type Water / Oil / Diesel Fuel Strainer Size DN 10 - DN 80 (1/4" - 3")

DESCRIPTION

SHM Y-Strainer is a high quality ductile iron epoxy coated strainer with stainless steel mesh inside, installed to the pipeline system to protect equipment and prolong their working life (ie. Flow meter / pump). Unique design, high flow rate, resist corrosion for long term use.

APPLICATION

Water works and water resource project, cold and hot water system up to 150° C, air conditioning system, boiler, raw water, environment protection, public facilities, power and public utilities, building industry, petroleum, chemical, steel, metallurgy, paper making industry.

FEATURES

- Provides wider filtration.
- Great flow rate.
- Ductile Iron with High Grade Epoxy Coating.
- Cold and Hot Water/Oil/Diesel Fuel up to 150° C.
- Flange Connection JIS 10K / PN16
- Working Pressure 16 Bar.
- Stainless Steel Screen / Filter.
- Easy Installation and Maintenance.
- Warranty 1 Year.



TECHNICAL SPECIFICATIONS

SIZE		DIMENSION			WEIGHT (KG)
(MM)	(INCH)	LENGTH	WIDTH (MM)	HEIGHT	
DN 10	1/4"				
DN 15	1/2"	127	95	120	
DN 20	3/4"	180	105	145	
DN 25	1"	150	113	140	
DN 40	1 1/2"				
DN 50	2"				
DN 65	2 1/2"				
DN 80	3"				

SHM DISPLAY & SIGNAL CONVERTER

Signal Reader and Converter Device

DESCRIPTION

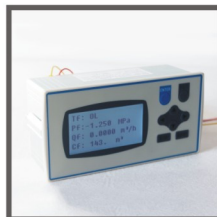
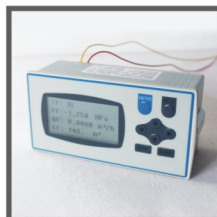
SHM Display & Signal Converter is a device that read & convert various type of signal. Highly recommended because its all-around function.

APPLICATION

- Used on to a flow meter, and or between flow meter and any other devices.

FEATURES

- Temperature Display Range : -999.9-999.9
- Instant Flow Rate Display Range : -99999-99999
- Cumulative Flow Display Range : 0-1000000000
- Decimal Point can be set.
- Signal Input Type :
Flow : 1-5V DC, 0-5V DC, 4-20mA, 0-10mA, 0-20mA, 3-5000 Hz Pulse (>5V).
Temp. : No Temp, Fixed Temp, Pt100, Cu100, Cu50.
Pressure : No Press, Fixed Press, 1-5V DC, 0-5V DC, 4-20mA, 0-10mA, 0-20mA.
- Error : 0.2%
- Output : Photoelectric Isolation, 4-20mA, 0-10mA, 0-20mA DC, 1-5V DC, 0-5V DC, 0-10V DC
- Communication Interface : Photoelectric Isolation, RS 232 Standard, RS 485, Address : 0-255, Rate : 2400, 4800, 9600, 19200.
- Warranty 2 Years (Full Services & Spare Parts).





MULTI FUNCTION SEWAGE-PC FLOW METERS

BSW MULTI FUNCTION SEWAGE-PC FLOW METERS

Analog / Mechanical Clean / Sewage Water Meter Cold 50°C and Hot 90°C Size DN 50 - DN 300 (2" - 12")

DESCRIPTION

BSW Sewage-PC Flow Meters : Analog / Mechanical Flow Meter for Water or Waste / Sewage Water is an epoxy coated cast iron with plastic cap, it has great flow rate measure & resistant to light chemicals and corrosion. An economic version of SHM Sewage Flow Meters, for indoor used, sharing the same specification plus one advantages : value.

APPLICATION

BSW Sewage-PC Flow Meters can be used for :

- Sewage Treatment Plant (STP) ie. Hospital, Hotel, Industrial, Mall, Residential, Palm Oil, Etc.
- Raw Water, Sludge Water and many others.
- Inlet & Outlet Water Treatment.
- Best suited for Pump System and high flow rate.

FEATURES

- Easy Installation & Maintenance.
- Dry Dial, Magnetic Drive.
- High Bypass & Very Low Head Loss.
- Plastic Vacuum Sealed Register, Free from condensation and remain clear for long term.
- Working Temperature 0.1-50°C for Cold Water and 0.1- 90°C for Hot Water.
- Max. Pressure : 16 Bar. Max. Error : +/- 2%.
- Protection Grade : IP 68.
- ISO 9001 & ISO 4064.
- Warranty 2 Years (Full Services & Spare Parts).



TECHNICAL SPECIFICATIONS

SIZE			MAX FLOW QMAX	CONTINUOUS FLOW QN	TRANSITIONAL FLOW QT	MIN FLOW QMIN	LENGTH (L)	HIGH (H)	CONNECTION FLANGE		WEIGHT
DN	INCH	MM					(MM)		OUTSIDE DIAMETER (D1)	BOLT INNER DIAMETER (D2)	(KG)
			M3 / HOUR								
DN 50	2"	50	30	15	3	0.45	200	272	165	125	12
DN 65	2.5"	65	50	25	5	0.75	200	274	185	145	15
DN 80	3"	80	80	40	8	1.2	225	281	200	160	16
DN 100	4"	100	120	60	12	1.8	250	291	220	180	18
DN 125	5"	125	200	100	20	3	250	312	250	210	22
DN 150	6"	150	300	150	30	4.5	300	341	285	240	32
DN 200	8"	200	500	250	50	7.5	350	384	340	295	40
DN 250	10"	250	800	400	80	12	450	435	405	350	68
DN 300	12"	300	1200	600	120	18	500	486	445	400	90