



PT. SUMBER UTAMA KARYA

General Contractor and Supplier



COMPANY PROFILE

Office : Jl. Margorejo Indah XII Blok C 313 Surabaya – Jawa Timur
Phone. 031-99859679 / Fax. 031-99859980 Email. cs@sumberutamakarya.com
www.sumberutamakarya.com

Fire Protection and Security System Specialist

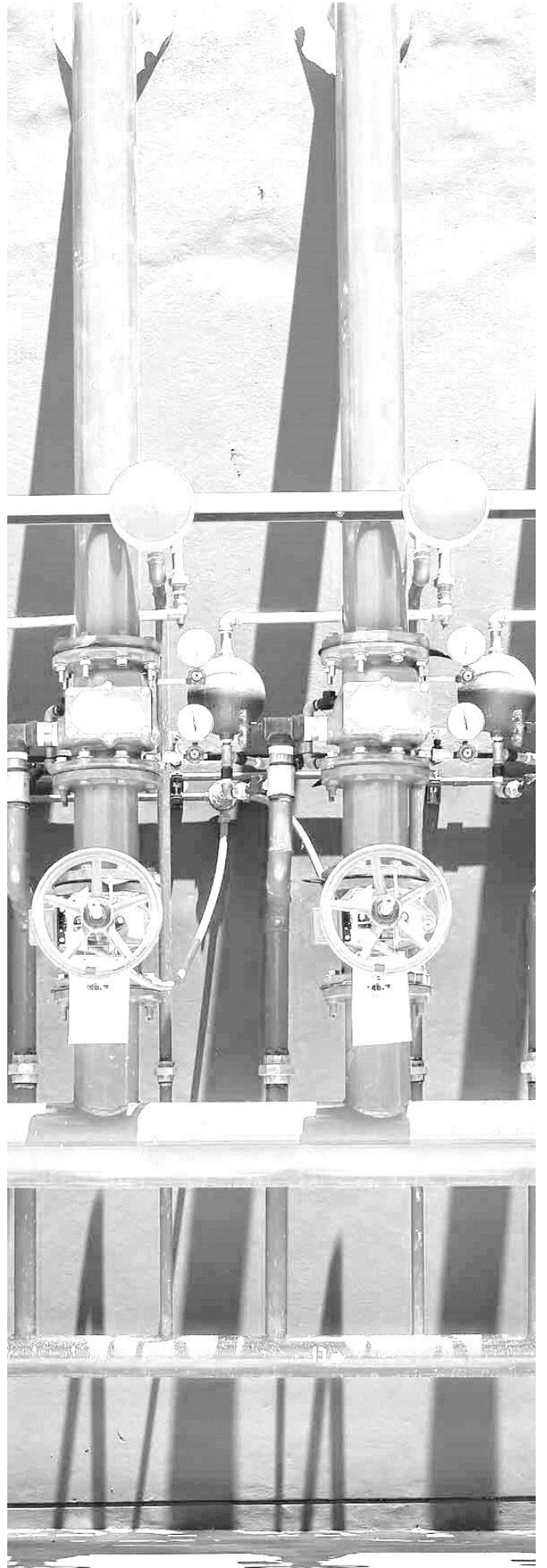


Table of Contents

Cover Page	1
Title Page.....	2
Table of Contents	2
Company Information	4
Engineering & Construction.....	4
Scope of work the engineering & construction	4
Mechanical & Electrical.....	5
Scope of work the mechanical & electrical	5
CORPORATE Management.....	6
Office and Legal	7
Work Experience	8
Private Sector	9
Hydrant System.....	9
Fire Alarm	11
Others	13
Government.....	14
Hydrant System dan Pengadaan Mobil Pemadam Kebakaran.....	14
Product of Fire and Security System	15
Fire Alarm (SIEMENS).....	17
Fire Alarm (HOCHIKI)	19
CCTV (Closed Circuit Television)	21
Automatic Barrier Gate System	22
Air Conditioning Product	23
Air Conditioning System Installation.....	25
Chiller System	26
Chiller System Instalation	27
Hydrant Equipment.....	28
Integrated Facility And Security Management System Concept.....	29





Company Information

With an increasing population and the need to replace aging infrastructure, the civil construction industry is facing steady and predictable growth. The current condition of the nation's critical infrastructure has been rated low by US civil engineers, and there is a demand to establish a long-term plan for improvement. Historically, large government projects have been plagued with cost and schedule overruns. Shrinking state coffers and federal funding uncertainties are forcing non-traditional project delivery methods including public and private partnerships. Interface Consulting understands the dynamics of the civil construction environment and possesses first-hand experience in traditional and non-traditional project delivery methods.

Raharto Teno Prasetyo
Chief Executive Officer



Engineering & Construction

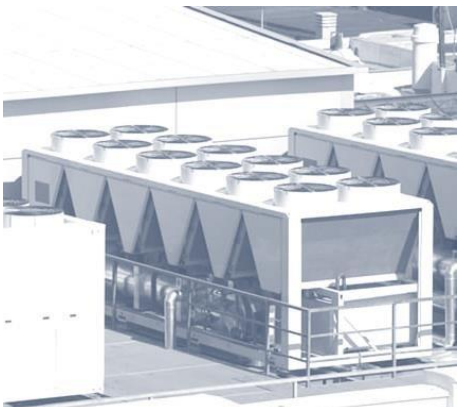
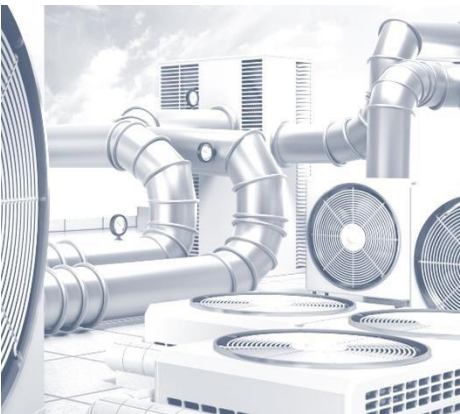
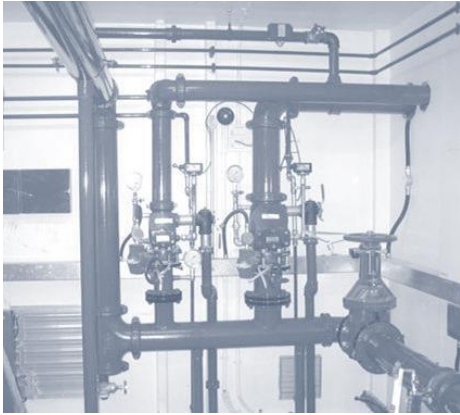
Sumber Utama Karya is a leading engineering and construction consulting firm that assists clients with the successful management of complex and problem projects. As an industry specialist, the firm not only employs innovative strategies and solutions to address the challenges and risks in the evolving civil construction marketplace, but it also analyzes the technical, commercial, and contractual issues faced by owners, engineers, and contractors that impact the bottom line.

Scope of work the engineering & construction

Design, building construction, maintenance building, cat and fill, drainage, and etc

Mechanical & Electrical

Scope of work from the mechanical Electrical



Mechanical & Electrical

Andover System is an Integrated Facility and Security Surveillance System, Digital CCTV, Access Control / Guard Tour and Visitor Management System, Anti Terror Equipment, Perimeter Protection and Intrusion Detection, Fire Alarm System, Hydrant and Sprinkler system, Other Automation System, etc) is solution that can bridge existing condition which is partially owned (CCTV, Access Control System, Fire Alarm Automation System, etc.) with future integration needs.

Scope of work the mechanical & electrical

Hydrant System

Design, Installation, Testing Commissioning for Hydrant system in hazard area or building management.

Fire Alarm System

Design, Installation, Testing Commissioning for Fire Alarm system in hazard area or building management, Integration with mimic panel.

Air Conditioning (AC) System

Design, Installation, Testing Commissioning for Air Conditioning central, Installation Air Conditioning Type Cassette, Supply Air Conditioning Stand and etc.

Chiller System

Design, Installation, Testing Commissioning for Chiller system in hazard area or building management, Integration with mimic panel to reduce fixed energy cost.

CORPORATE Management

Position	Name
Chief Executive Officer	Raharto Teno Prasetyo
Director	Lucia Cicilia Agan
Operational Manager	Prima Fitra Saputra
Engineering	Shinta Murti K
Technical Support	Isnaini Puji Rakhmawati
Purchasing	Dyanti Anggie Prameswari

Office and Legal



Operational Office:

Jl Margorejo Indah XII Blok C No. 313
Surabaya - Jawa Timur

Phone : 031-99859679

Fax : 031-99859980

E-mail : cs@sumberutamakarya.com



Work Experience

Here are some of our customer reference for your consideration:

Andover System

1. Terminal Peti Kemas Surabaya
2. PT Pembangkit Jawa Bali

Barrier Gate

3. Kebun Binatang Padang Sumatera Barat
4. STIESIA SURABAYA

Fire Protection & Suppression System

5. PT Pembangkit Jawa Bali
6. PT Mermaid Textile
7. TOP TEN discotique
8. PT Kutai Timber Indonesia
9. PUSVETMA Surabaya
10. PT Randy Cones Indonesia

Hydrant System

11. STIESIA SURABAYA

Access Control

12. PT Randy Cones Indonesia

Medical Equipment

13. RS. Petrokimia Gresik
14. RSUD Pacitan

Digital Printing And Offset

15. PT H.M. Sampoerna Surabaya
16. Brawijaya University
17. ETC

Private Sector

Hydrant System

No	Client	Scope of Work/ Supply
1	PT Rakintam	Hydrant System, Supply and Installation Fire Alarm devices for "Royal Plaza Surabaya"
2	PT Randy Cones Indonesia - Malang	Fire Protection & Suppression System
3	PT Petrokimia - Gresik	Foam System for "PERPIPAAN MINYAK SOLAR (BBM) PROJECT"
4	PT Walet Kencana Perkasa - Surabaya	Hydrant System
5	PT Mermaid Textile Industry Indonesia - Mojokerto	Fire Protection & Suppression System
6	PUSVETMA - Surabaya	Fire Protection & Suppression System
7	PT Barata Indonesia - Gresik	Foam System & Fire Alarm System for "Proyek Dovechem Maspion Terminal Gresik"
8	PT Pabrik Kertas Tjiwi Kimia Tbk - Sidoarjo	Hydrant System
9	PT Kutai Timber Indonesia - Probolinggo	Fire Protection & Suppression System
10	STIESIA (Sekolah Tinggi Ilmu Ekonomi Indonesia) - Surabaya	Hydrant System & Equipment Landmark Mall Surabaya
11	PT SC Johnson Indonesia - Surabaya	Hydrant System
12	PT Dayasa Aria Prima - Gresik	Hydrant Equipment & Fire Alarm System
13	PT Indonesia Royal Paper - Plant Jombang	Hydrant equipment

No	Client	Scope of Work/ Supply
14	PT Berkah Industri Mesin Angkat (PT BIMA) - Surabaya	Hydrant System
15	Aston Gili Trawangan - Lombok	Hydrant System
16	PT Wirifa Sakti - Mojokerto	Hydrant System
17	PT Lyondellbasell Advanced Polyolefins - Pasuruan	Hydrant System
18	PT Japfa Comfeed Indonesia - Plant Buyut (Cirebon)	Hydrant System
19	PT Japfa Comfeed Indonesia - Plant Yani (Cirebon)	Hydrant System
20	PT Japfa Comfeed Indonesia - Plant Grobogan	Hydrant System
21	PT Japfa Comfeed Indonesia - Plant Purwakarta	Hydrant System
22	PT Japfa Comfeed Indonesia - Plant Sragen	Hydrant System
23	PT Japfa Comfeed Indonesia - Plant Cikupa (Tangerang)	Hydrant System
24	PT Japfa Comfeed Indonesia - Plant Cikande (Serang)	Hydrant System
25	PT Japfa Comfeed Indonesia - Plant Lampung	Hydrant System
26	PT Japfa Comfeed Indonesia - Plant Banjarmasin	Hydrant System
27	PT Trisakti Purwosari Makmur (KT&G) - Pasuruan	Hydrant System
28	PT Japfa Comfeed Indonesia - Plant Buduran (Sidoarjo)	Hydrant System
29	PT Japfa Comfeed Indonesia - Plant Gedangan (Sidoarjo)	Hydrant System

Fire Alarm

No	Client	Scope of Work/ Supply
1	PT Unilever Indonesia Tbk - Surabaya	Supply and Installation Fire Alarm devices
2	PT Pradiptaya - Surabaya	Supply and Installation Fire Alarm devices
3	PT Inco - Sorowako	Supply and Installation Fire Alarm devices
4	PT Indonesia Power - Pasuruan	Supply and Installation Fire Alarm devices
5	PT Cipta Karya Bhakti - Yogyakarta	Supply and Installation Fire Alarm devices
6	PT Bangun Sarana Listrik Persada - Surabaya	Supply and Installation Fire Alarm devices
7	PT British American Tobacco - Malang	Supply and Installation Fire Alarm devices
8	PT Adhi Karya	Supply and Installation Fire Alarm devices for "proyek RS. Taruma Negara"
9	PT Excel Indonesia - Sidoarjo	Supply and Installation Fire Alarm devices
10	PT Eterindo Nusa Graha - Gresik	Supply and Installation Fire Alarm devices
11	PT Pindodeli Pulp & Paper Mills - Karawang	Supply and Installation Fire Alarm devices
12	TOP TEN Discotique - Surabaya	Fire Protection & Suppression System
13	PT Sumber Jayatama Nusantara - Surabaya	Supply and Installation Fire Alarm devices
14	Traveler Hotel Bandara - Balikpapan	Supply and Installation Fire Alarm devices
15	PT Jatratama Teknikindo - Surabaya	Supply and Installation Fire Alarm devices
16	PT Terminal Petikemas Surabaya	Supply and Installation Fire Alarm devices & ANDOVER SYSTEM for "proyek Gudang Api CFS"

No	Client	Scope of Work/ Supply
17	PT Terminal Petikemas Surabaya	Supply and Installation Fire Alarm devices for "proyek Container Crane"
18	PT Dua Kelinci - Pati	Fire Alarm System
19	PT Daewoong Infion (Bernofarm Group) - Pasuruan	Fire Alarm System - Siemens
20	PT Japfa Comfeed Indonesia - Plant Gedangan (Sidoarjo)	Fire Alarm Equipment
21	PT Greenfields Indonesia - Malang	Maintenance Fire Alarm System

Others

No	Client	Scope of Work/ Supply
1	PT Wijaya Karya (WIKA)	Pembangunan Tanki, Silo dan Air Receiver Proyek PLTU Palu
2	Perum BULOG - Surabaya	Mechanical, Electrical and Plumbing Project

Government

Hydrant System dan Pengadaan Mobil Pemadam Kebakaran

No	Client	Scope of Work / Supply
1	Pemerintah Kabupaten Jombang	<ul style="list-style-type: none"> • Pengadaan Hydrant System Blok Office Pemerintah Kab. Jombang • Pengadaan Mobil Pemadam Kebakaran
2	Pemerintah Kabupaten Nunukan - Kalimantan Utara	Pengadaan Hydrant System
3	Pemerintah Kota Malang	Pembangunan POLTEKKOM
4	Pemerintah Kabupaten Lebak - Banten	Pengadaan Mobil Pemadam Kebakaran
5	Pemerintah Kabupaten Rejang Lebong - Bengkulu	Pengadaan Mobil Pemadam Kebakaran
6	Pemerintah Kabupaten Bandung	Pengadaan Mobil Pemadam Kebakaran & Peralatan Pemadam Kebakaran
7	Pemerintah Kabupaten Sukoharjo	Pengadaan Mobil Pemadam Kebakaran & Peralatan Pemadam Kebakaran
8	Pemerintah Kabupaten Lombok Utara	Pengadaan Peralatan Pemadam Kebakaran
9	Pemerintah Kabupaten Sidoarjo	Pengadaan Peralatan Pemadam Kebakaran
10	Pemerintah Kota Malang	Pengadaan Mobil Pemadam Kebakaran
11	PT TELKOM	Revitalisasi Jaringan Telkom
12	MABES POLRI	Revitalisasi Jaringan Bareskrim Mabes POLRI

Product of Fire and Security System



SIEMENS



2015
NEW

www.siemens.com/buildingtechnologies

Cerberus ECO

Fire Safety Products and Accessories

Product Catalogue

Product and Service

PT. SUMBER UTAMA KARYA
Fire Protection and Security System Specialist



FIRE ALARM

Fire Alarm (SIEMENS)



FDO181 Addressable Optical Smoke Detector
Auto-mapping, software addressing
Built-in 16 bits Microprocessor, apply Siemens DA Algorithm for different environment
Drift compensation and warning
Special treatment on PCB to prevent humidity
360°viewable LED for easy installation and safety



FDT181 Addressable Heat Detector
Auto-mapping, software addressing
High-grade heat sensor to provide stable detection
Rate of rise or fixed temperature by setting
Special treatment on PCB to prevent humidity
360°viewable LED for easy installation and safety



FDM181 Resettable Manual Call Point
Auto-mapping, software addressing
Resettable design for easy maintenance
Special treatment on PCB to prevent humidity
Compact and ergonomic design



FDCIO181-2 Output Module (2 In / 2 Out)
Auto-mapping, software addressing
Inputs/Outputs supervised for open/short circuit
Inputs can be programmed as NO or NC
External 24Vdc for outputs is supervised
3 different settings for outputs
Open collector output (Normal or inverted)
Dry contact output
Self monitor for faults



FDCL181 Line Separator
Short circuit isolation
Max. 32 devices between two line separators
Connector design for T-Tapping
LED indication for both input and output channels for easy troubleshooting



FT1810 Floor Repeater Display
Large LCD (192x64) display, max. 252 event display
Supports fire and fault messages
Separate FR18-BUS network for fast and stable communication
Supports all events via same controller
Max. 32 floor repeater displays per controller
Unique, compact look



FC18 Controller (252 pts / 504 pts)
"Hot plug in" on detection bus. After inserting devices, use Automap and devices start working
Max. 8 controllers on same network bus
Free topology and polarity detection bus, to a max distance of 2.5km (Loop) or 1.5km (Stub)
Large 5.7 inches LCD (320x240) with backlight
"Windows" like operation terminal with right hand button for fast and easy operation
Controller includes 8-ways manual control zones, used for important manual or automatic operations
2 built-in programmable input/output, can programme as general alarm and general fault outputs
Removable terminal for safe, easy installation



Competitive Advantages

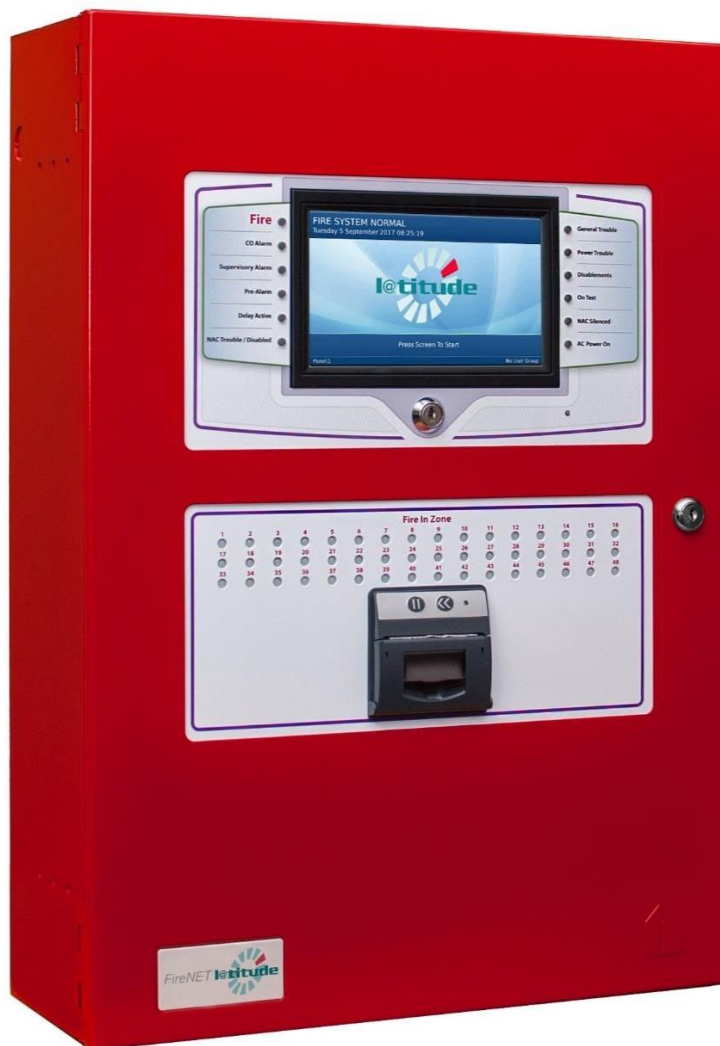
SIMO Design
Advance bus communication protocol
Large LCD with easy operation
Built-in 16 bit microprocessor in detector
Waxed PCB on all Peripherals
Flexibility
Free polarity and topology
"Hot plug in" peripherals
Programming from terminal
Advanced Sticker Method



FC18R Controller (1,512 pts)
"Hot plug in" on detection bus. After inserting devices, use Automap and devices start working
Max. 16 controllers on same network bus
Free topology and polarity detection bus, to a max distance of 2.5km (Loop) or 1.5km (Stub)
Large 5.7 inches LCD (320x240) with backlight
"Windows" like operation terminal with right hand button for fast and easy operation
Controller includes 8-ways manual control zones, used for important manual or automatic operations
2 built-in programmable input/output, can programme as general alarm and general fault outputs
Removable terminal for safe, easy installation

HOCCHIKI

World Class Leaders in Fire Detection Since 1918



Product and Service

PT. SUMBER UTAMA KARYA
Fire Protection and Security System Specialist



FIRE ALARM

Fire Alarm (HOCHIKI)



L@titude Network Vision Annunciator

LFC00NC-10 (Red), LFC00NC-40 (Gray), and LFC00NC-60 (Black)

Standard Features

- Full color 7" (800 x 480 pixel) interface
- Replicates information displayed at the FACP
- Automatic display brightness adjustment
- Internal buzzer
- Connects via control panel network terminals
- Low current, 24V DC powered
- Configurable functionality
- Enable key-switch
- Sheet steel enclosure
- Surface or semi-flush enclosure options available



Double Aperture
Includes Zone LED Module and Printer

- Positive Alarm Sequence
- Pre-Signal
- Alarm Verification
- Drift Compensation
- CO Alarm
- Hard-wired fire and trouble routing inputs and outputs
- Modular and expandable electronics
- Option to "invert" inputs and outputs
- 5000 programmable cause and effects; over 50,000 inputs and outputs
- Can be networked with programmable functionality
- Programming via USB or PC
- L@ti-View Graphical PC User Interface - coming soon!



Loop Explorer 2 Configuration Software

Standard Features

- Highly configurable
- Enables customization of languages, color schemes, and company logos
- Powerful standard templates allow rapid configuration
- Cause and effect allows the configuration of large, complex networks with ease.



16 Channel I/O Interface Card (\$560)

The 16 Channel I/O Interface enhances the versatility of the alarm system by providing additional input and output capabilities to the panel. Inputs or outputs can be selected for up to 16 individual channels, and are configured in the same way as devices connected to addressable loops of the panel. The 16 Channel I/O Interface can be configured to contribute or act upon cause and effect logic.
NOTE Mounting cabinet K0770-XX required.



4 Slot Base Model

The base model of the FireNET L@titude Fire Alarm Control Panel is equipped with a generous quantity of notification appliance circuits, relays, and inputs, and can be further increased by the addition of up to four I/O panel modules.



8 Slot Double Aperture with Zone LEDs and Printer

This configuration is equipped as above, but also has an optional Zone LED module. The Zone LED module contains 48 LEDs and is connected to the LCD Main Processor Board of the FireNET L@titude Fire Alarm Control Panel. A maximum of three Zone LED modules can be connected to provide the fascia with 144 Zone LED indicators.

HOCHIKI
World Class Leaders in Fire Detection Since 1918

FIRE ALARM



PULL STATIONS

DCP-AMS
DCP-AMS-KL

Addressable manual pull stations provide a fast and practical means of manually initiating a fire alarm signal. Both single action and dual action manual pull stations are available.



FAST RESPONSE CONTACT MODULES

FRCME-M, FRCMA-P, FRCME-4, FRCMA-I,
FRCMA-PI, FRCME-S, FRCME-P, FRCMA

The Contact Modules are designed to be used with pull stations, water flow switches, and other applications requiring the monitoring of dry contact alarm initiating devices.



ANALOG DUCT SENSORS

DH-99-A (without relays)
DH-99-AR (with relays)

Analog Photoelectric Duct Smoke Sensors provide early detection of smoke and products of combustion present in air moving through HVAC ducts in Commercial, Industrial, and Residential applications.



ANALOG DUCT SENSOR REMOTE ACCESSORIES

MS-RH/KA/P/R
MS-RA/R
MS-RA/P
MS-KA/P/R

The Remote Accessories are designed to be used with the analog Duct Sensors to provide audible and visual indication as well as remote test / reset functions. These devices are constructed of attractive, yet durable brushed stainless steel and mount on a standard single or double gang electrical backbox.



FIXED TEMPERATURE / RATE OF RISE HEAT SENSOR

ATJ-EA

The Fixed Temperature / Rate of Rise sensors provide accurate temperature measurement data to the fire alarm control panel. These sensors are well-suited for environments where dust, cooking fumes, or other factors make the use of smoke sensors impractical.



PHOTOELECTRIC SMOKE SENSORS

ALN-V

The Photoelectric Smoke Sensor is suited to detecting optically dense smoke typical of fires involving materials such as soft furnishings, plastic, foam, or other similar materials, which tend to smolder and produce large visible smoke particles.



MULTI-CRITERIA SENSOR SMOKE & HEAT

ACC-V

The Smoke & Heat Multi-Criteria Sensor is particularly suited for detecting smoke produced by a wide range of combustibles found in various applications. Temperature monitoring is achieved by a thermistor placed for optimum sensitivity.



MULTI-CRITERIA SENSOR CO, COHb, SMOKE, HEAT

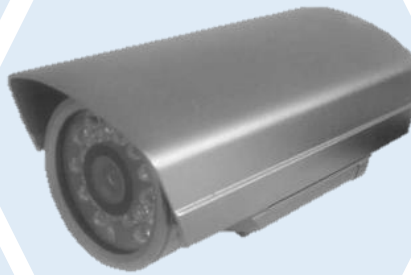
ACD-V

The CO, COHb, Smoke, & Heat Multi-Criteria Sensor is particularly suited for detecting smoke produced by a wide range of combustibles found in various applications. Temperature monitoring is achieved by a thermistor placed for optimum sensitivity. The sensor is also suited for detecting deadly levels of CO.

CCTV (Closed Circuit Television)



GEC-212-5228 DOME CAMERA



GEC-212-5762 BULLET CAMERA



GE DVR DIGIA II

Automatic Barrier Gate System



AUTOMATIC BARRIER GATE FOR PARKING LOT SYSTEM



AUTOMATIC TRAFFIC BARRIER GATE WITH LED



STEEL PARKING TOLL GATE BARRIER SYSTEM



Air Conditioning Product

**Building Passion,
Building Solutions.**



PT. Sumber Utama Karya
Fire Protection and Security System Specialist

Jl. Margorejo Indah XII
Blok C 313
Surabaya 60238
Jawa Timur

Phone. 031-99859679
Fax. 031-99859980
E-mail. cs@sumberutamakarya.com

FLOOR STANDING: INDOOR UNITS

Capacity (HP)			5.0HP	8.0HP	10.0HP
Model	Indoor Cooling		S-60PY1HS	S-75PY1HS	S-100PY1HS
	Qty		1	1	1
Nominal Cooling Capacity	Btu		60,000	75,000	100,000
	kW		17.58	21.98	29.31
Power Consumption	kW		6.30	8.00	10.82
	A		13.30	17.62	23.15
Running Current	CFM		1,500	1,500	2,400
	PA		0	0	0
External Static Pressure	V/Ph/Hz		220/230/240V/1-phase/50Hz	220/230/240V/1-phase/50Hz	220/230/240V/1-phase/50Hz
	kW		0.68	0.64	0.64
Power Input	A		2.79	3.70	4.83
	Full Load Amp				
Fan	Type		Forward curve centrifugal blower	Forward curve centrifugal blower	Forward curve centrifugal blower
	Drive Method		Direct Drive	Direct Drive	Direct Drive
Fan Speed	rpm		1350	1350	1350
	Quantity		2	2	2
Coil	Tube-Material		Seamless Copper Tube	Seamless Copper Tube	Seamless Copper Tube
	Fin-Material		Aluminum	Aluminum	Aluminum
Face Area	mm ² (ft ²)		541625(5.8)	541625(5.8)	831621(9.1)
	Type		Plastic	Plastic	Plastic
Filter	Material		Electro Galvanized Steel	Electro Galvanized Steel	Electro Galvanized Steel
	Finished		Polyester Paint	Polyester Paint	Polyester Paint
Dimension	Unit(WxDxH)	mm	875x520x1815	875x520x1815	1300x520x1915
	Shipping(WxDxH)	mm	1025x510x1860	1025x510x1860	1420x510x1960
Weight	Unit	kg	121	132	180
	Shipping	kg	151	155	212

INDOOR UNIT



S-60PY1HS



S-75PY1HS



S-100PY1HS

DUCTED: INDOOR UNITS

Capacity (HP)			5.0HP	8.0HP	10.0HP	13.0HP	15.0HP	20.0HP	25.0HP
Model		Indoor Cooling	S-75PY1HS	S-100PY1HS	S-125PY1HS	S-150PY1HS	S-200PY1HS	S-250PY1HS	
		Qty	1	1	1	1	1	1	
Nominal Cooling Capacity	Btu		75,000	100,000	125,000	150,000	200,000	250,000	
	kW		21.98	29.31	36.64	43.96	58.62	73.27	
Power Consumption	kW		8.62	11.65	13.46	16.47	21.63	25.94	
Running Current	A		20.84	26.32	24.43	32.15	43.32	49.86	
Nominal Airflow	CFM		2,500	2,800	4,100	4,400	6,400	7,800	
External Static Pressure	PA		100	100	150	150	200	200	
Power Input	W/Ph/Hz		220/230/240V/1-phase/50Hz	220/230/240V/1-phase/50Hz	380/400/415V/3-phase/50Hz	380/400/415V/3-phase/50Hz	380/400/415V/3-phase/50Hz	380/400/415V/3-phase/50Hz	
Power Supply	kW		1.28	1.57	1.47	1.82	1.47	1.82	
Full Load Amp	A		5.82	6.80	2.89	3.70	6.78	6.78	
Fan	Type		FORWARD CURVE CENTRIFUGAL BLOWER	FORWARD CURVE CENTRIFUGAL BLOWER	FORWARD CURVE CENTRIFUGAL BLOWER	FORWARD CURVE CENTRIFUGAL BLOWER	FORWARD CURVE CENTRIFUGAL BLOWER	FORWARD CURVE CENTRIFUGAL BLOWER	
	Drive Method		DIRECT DRIVE	DIRECT DRIVE	DIRECT DRIVE	DIRECT DRIVE	DIRECT DRIVE	DIRECT DRIVE	
Fan Speed	rpm		1300	1300	700	700	600	600	
Quantity			1	2	1	1	1	1	
Coil	Tube-Material		Seamless Copper Tube	Seamless Copper Tube	Seamless Copper Tube	Seamless Copper Tube	Seamless Copper Tube	Seamless Copper Tube	
	Fin-Material		Aluminum	Aluminum	Aluminum	Aluminum	Aluminum	Aluminum	
Face Area	mm ² (ft ²)		643125(7.0)	643125(7.0)	840176(9.1)	840176(9.1)	1176125(12.8)	1176125(12.8)	
	Type		Aluminum Filter	Aluminum Filter	Aluminum Filter	Aluminum Filter	Aluminum Filter	Aluminum Filter	
Filter	Material		Electro Galvanized Steel	Electro Galvanized Steel	Electro Galvanized Steel	Electro Galvanized Steel	Electro Galvanized Steel	Electro Galvanized Steel	
	Finished		Polyester Paint	Polyester Paint	Polyester Paint	Polyester Paint	Polyester Paint	Polyester Paint	
Dimension	Unit(WxDxH)	mm	1400x700x250	1600x700x250	1500x700x250	1500x700x250	1800x1000x250	1800x1000x250	
	Shipping(WxDxH)	mm	1400x700x250	1600x700x250	1500x700x250	1500x700x250	2000x1000x250	2000x1000x250	
Weight	Unit	kg	104	115	162	169	224	334	
	Shipping	kg	130	142	220	227	287	392	

INDOOR UNIT



S-75PY1HS



S-100PY1HS



S-125PY1HS



S-150PY1HS



S-200PY1HS



S-250PY1HS

FLOOR STANDING: OUTDOOR UNITS

Capacity (HP)			5.0HP	8.0HP	10.0HP
Model	Outdoor Cooling		U-60PVY1HS	U-75PVY1HS	U-100PVY1HS
	Qty		1	1	1
Nominal Cooling Capacity	Btu		60,000	75,000	100,000
	kW		17.58	21.98	29.31
Power Consumption	kW		6.30	8.00	10.82
	A		13.30	17.62	23.15
Power Supply	V/Ph/Hz		380/400/415V/3-phase/50Hz	380/400/415V/3-phase/50Hz	380/400/415V/3-phase/50Hz
	kW		5.67	7.36	10.08
Power Input	A		13.80	17.82	23.32
	Full Load Amp				
Compressor	Type		Scroll	Scroll	Scroll
	Power input	kW	5.70	6.79	9.51
RLA	A		9.80	12.40	16.60
	LRA	A	79	101	139
Fan	Type		Propeller	Propeller	Propeller
	Size	mm(in)	457.2(18")	609.6(24")	609.6(24")
Coil	Tube-Material		Seamless Copper Tube	Seamless Copper Tube	Seamless Copper Tube
	Fin-Material		Aluminum	Aluminum	Aluminum
Face Area	mm ² (ft ²)		1000731(11.0)	1700131(18.3)	1700131(18.3)
	Type		Flare nut	Flare nut	Flare nut
Connection	Liquid	mm(in OD)	12.7(1/2")	15.88(5/8")	15.88(5/8")
	Suction	mm(in OD)	19.05(3/4")	28.58(1-1/8")	28.58(1-1/8")
Type of Refrigerant			R410A	R410A	R410A
	Unit(WxDxH)	mm	1052x427x1176	965x573x1100	965x573x1100
Dimension	Shipping(WxDxH)	mm	1115x486x1215	1100x1100x1260	1100x1100x1260
	Unit	kg	104	103	180
Weight	Shipping	kg	126	203	212
	Precharged pipe length	m	7.5	7.5	7.5
Pipe Extension	Maximum pipe length	m	30.0	30.0	30.0

OUTDOOR UNIT



U-60PVY1HS



U-75PVY1HS



U-100PVY1HS

DUCTED: OUTDOOR UNITS

Capacity (HP)			5.0HP	8.0HP	10.0HP	13.0HP	15.0HP	20.0HP	25.0HP
Model	Outdoor Cooling		U-75PVY1HS	U-100PVY1HS	U-125PVY1HS	U-150PVY1HS	U-200PVY1HS	U-250PVY1HS	
	Qty		1	1	1	1	2	2	
Nominal Cooling Capacity	Btu		75,000	100,000	125,000	150,000	200,000	250,000	
	kW		21.98	29.31	36.64	43.96	58.62	73.27	
Power Consumption	kW		8.02	11.03	13.46	16.47	21.63	25.94	
Running Current	A		20.84	26.32	34.43	42.15	55.32	66.86	
Power Supply	V/Ph/Hz		380/400/415V/3-phase/50Hz	380/400/415V/3-phase/50Hz	380/400/415V/3-phase/50Hz	380/400/415V/3-phase/50Hz	380/400/415V/3-phase/50Hz	380/400/415V/3-phase/50Hz	
Power Input	kW		7.36	10.08	12.61	14.55	18.08	22.01	
Full Load Amp	A		17.82	23.32	25.74	36.75	23.32	25.74	
Compressor	Type		Scroll	Scroll	Scroll	Scroll	Scroll	Scroll	
	Power Input	kW	6.79	9.51	11.22	13.50	9.51	11.22	
	RLA	A	12.40	16.60	18.80	20.30	16.60	18.80	
	LRA	A	101	139	155	174	139	155	
	Quantity		1	1	1	1	1 each	1 each	
Fan	Type		Propeller	Propeller	Propeller	Propeller	Propeller	Propeller	
	Size	mm(in)	609.6(24")	609.6(24")	609.6(24")	711.2(28")	609.6(24")	609.6(24")	
	Quantity		1	1	1	1	1 each	1 each	
Coil	Tube-Material		Seamless Copper Tube	Seamless Copper Tube	Seamless Copper Tube	Seamless Copper Tube	Seamless Copper Tube	Seamless Copper Tube	
	Fin-Material		Aluminum	Aluminum	Aluminum	Aluminum	Aluminum	Aluminum	
	Face Area	mm ² (ft ²)	1700131(18.3)	1700131(18.3)	1700131(18.3)	2403783(25.32)	1700131(18.3)	1700131(18.3)	
Connection	Type		Flare	Flare	Flare	Flare	Flare	Flare	
	Liquid Suction	mm(in OD)	15.88(5/8")	15.88(5/8")	15.88(5/8")	15.88(5/8")	15.88(5/8")	15.88(5/8")	
Type of Refrigerant	Suction	mm(in OD)	28.58(1-1/8")	28.58(1-1/8")	34.32(1-3/8")	34.32(1-3/8")	28.58(1-1/8")	34.32(1-3/8")	
			R410A	R410A	R410A	R410A	R410A	R410A	
Dimension	Unit(WxDxH)	mm	965x573x1100	965x573x1100	965x573x1100	1130x1100x1250	965x573x1100	965x573x1100	
	Shipping(WxDxH)	mm	1100x1100x1260	1100x1100x1260	1100x1100x1260	1230x1230x1300	1100x1100x1260	1100x1100x1260	
Weight	Unit	kg	100	100	100	100	100	100	
	Shipping	kg	210	210	210	210	210	210	
Pipe Extension	Precharged pipe length	m	7.5	7.5	7.5	7.5	7.5	7.5	
	Maximum pipe length	m	30.0	30.0	30.0	30.0	30.0	30.0	

OUTDOOR UNIT



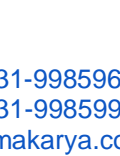
U-60PVY1HS



U-75PVY1HS



U-100PVY1HS



U-125PVY1HS

Remarks

Cooling capacity is based on entering air temperature 27°C DB / 19°C WB, ambient air temperature 35°C DB / 24°C WB. Products are subject to continuous improvements. Panasonic reserves the right to modify product designs and specifications without prior notice and without incurring any obligations.

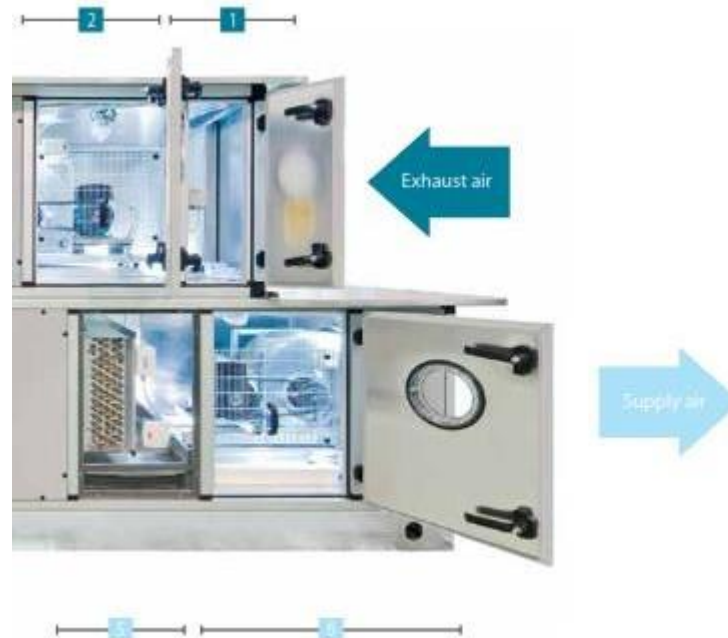
Air Conditioning System Installation



Chiller System



Chiller Engine



Supply air

- 1 Damper section including ventilation grilles, factory-mounted actuators
- 2 F7 bag filter with factory-mounted differential pressure manometer and hinged door
- 3 Heat recovery system (plate heat exchanger or rotation heat exchanger)
- 4 Mixing box with damper and factory-mounted actuators
- 5 R-410A with heat recovery system with galvanised condensate tray and drip protection
- 6 Supply air fan (with hinged door, opening, drive monitoring, mounted and cabled lighting and ON/OFF switch)

Chiller System Instalation



Chiller Installation

Hydrant Equipment

Hydrant Pillar Two Way



Hydrant Pillar One Way



Fire Hose



Hose Rack



Hydrant Valve



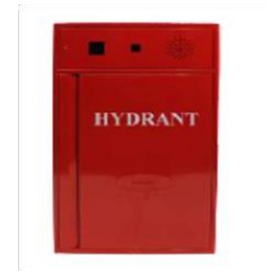
Hose Nozzle



Siamese Connection



Hydrant Box



Hose Reel



Mounted Hose Reel



Coverall



Pistol Grip Nozzle



Integrated Facility And Security Management System Concept

Integrated Security System Benefit's:

Efficiency

Running a business comes with an abundant number of high-order tasks, one of them being the company's security. An integrated security system in any industry will allow businesses to flourish more effectively and efficiently.

Centralisation

An integrated security system will allow a business's security operations to become centralised. Management teams and business owners can now get a full report from one area rather than needing to speak to all areas of their integrated security system.

Theft Prevention

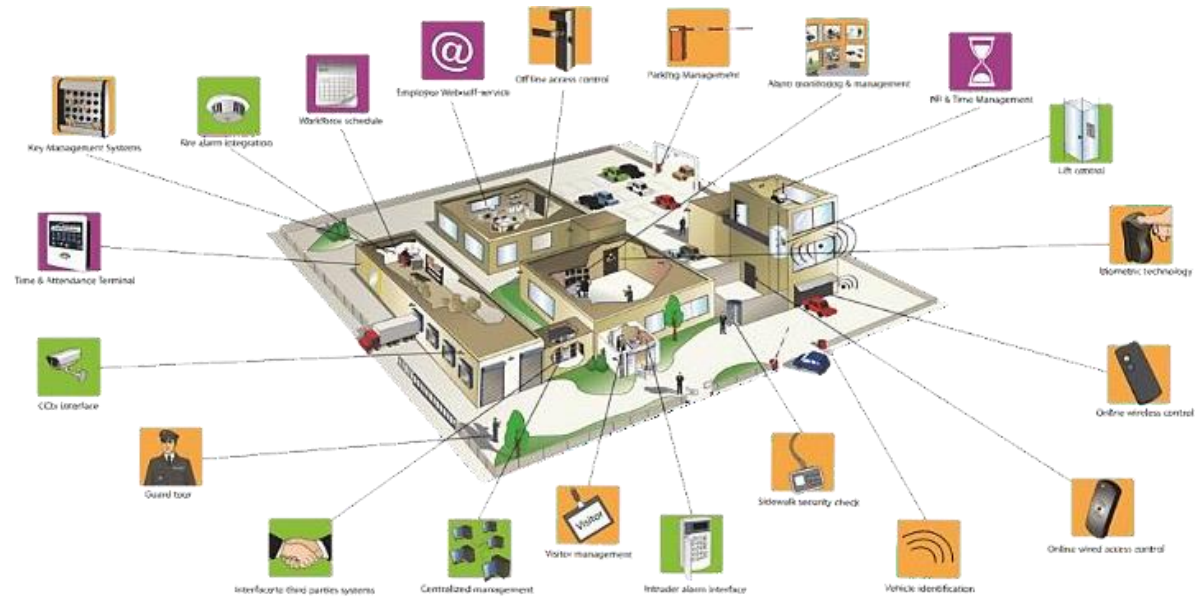
No matter what kind of industry one works in, they always have to be prepared for the unexpected theft. Whether internal theft or external theft, it can be overwhelming.

Real Time Monitoring

With multiple security systems, business management teams are able to see what is going on within their facilities and areas of work instantly, if needed. However, business owners and management teams don't always spend all their time on the properties and can't always ensure themselves that everything is running smoothly.

Conflict Resolution

Some integrated security systems come with a package of video surveillance, access control, intrusion alarms, PA systems and uniformed guard services.



Boost Productivity

At any business, an integrated security system is a guarantee to boosting productivity in the work-space. According to Kristin Morgan at St. Francis University, "Employee monitoring is being used to increase customer satisfaction, improve employee performance and enhance productivity,".

Business Savings

In the long run, having an integrated security system will allow your business to save money and be protected. Otherwise, in the case of a theft, burglary or robbery, the business owners/management team would be held liable for all the losses with nowhere to turn to.

Contact

PT SUMBER UTAMAKARYA

Jl Margorejo Indah XII C 313

Surabaya – Jawa Timur

Phone. (031) 9985 9679

Fax. (031) 9985 9980

E-mail. cs@sumberutamakarya.com

www.sumberutamakarya.com



*Scan QR code
using Google Lens
on your Android Apps*

Fire Protection and Security System Specialist