



PT INTECH PUMPS INDONESIA



Ruko Mendrisio 3 Blok C No.12 Gading Serpong, Tangerang-Banten HP: 0811 809 5888
E-mail : agra@intechpumps.com

FLOWAY® PUMPS

Vertical Turbine Pumps



ROTO-JET PUMP





The General Supplier and Services for Pumps

(Oil and Gas, Mining, Petrochemical, General Industries, and more)

PT INTECH PUMPS INDONESIA was incorporated in Indonesia as Supplier and Servicing of Rotating Business of pumps, motor and related rotating machineries repairs.

Authorized Service Center in South East Asia for worldwide leading pump manufacturers and can providing Indonesia certified assembler.

Vision

To be an established company in Indonesia by being "the valuable company" to our clients.

Mission

To be known as an established company and a valued company.
We are concerning on:

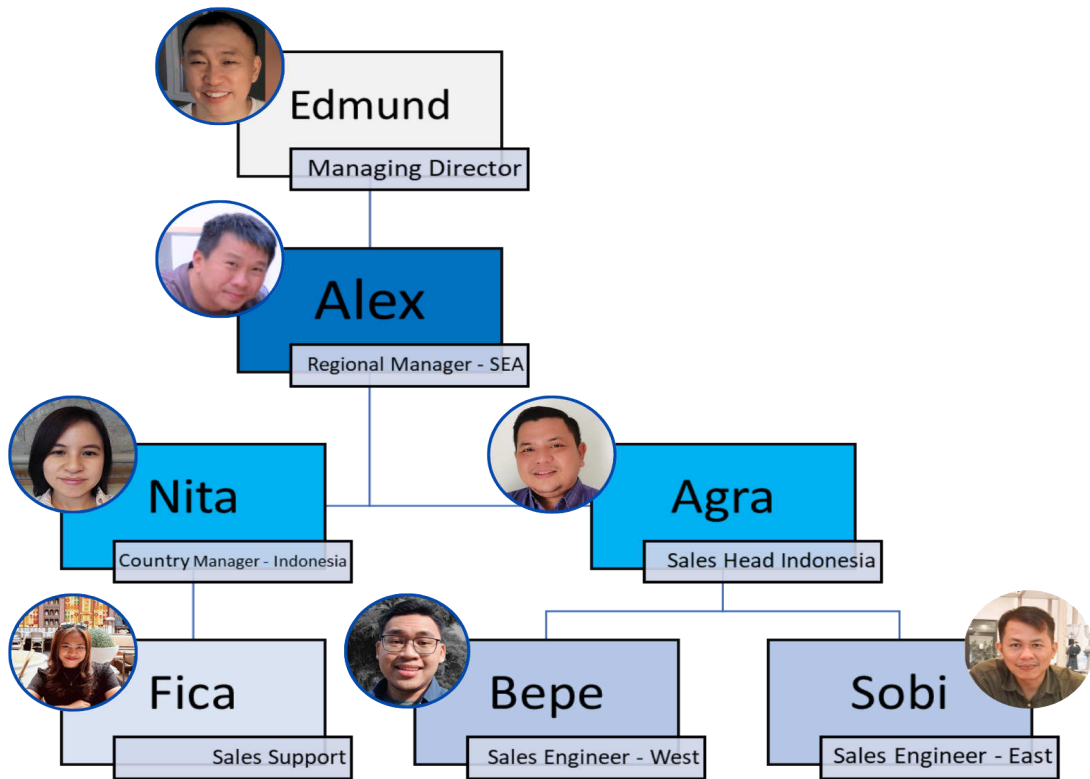
- INTEGRITY in specifications and pricing.
- QUALITY in products & services.
- TIMELINESS in shipping and delivery.
- PRECISION in manufacturing, modification and installation.
- PROFESSIONALISM in troubleshooting, repair and overhaul.

Our Website : www.intechpumps.com





Management and Organizational Chart



Contact Us

Please feel free to contact us if you need any further information.

Agra : Email/Phone Agra@intechpumps.com ; +62 811 8095 888

Bepe : Email/Phone Bepe@intechpumps.com ; +62 811 8688 161

Our Website : www.intechpumps.com



WIDE RANGE OF PRODUCTS KEY TO YOUR NEED



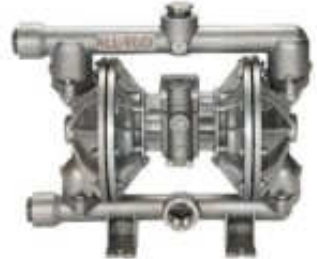
API 610 Latest Edition Centrifugal Pumps



API 674/675 Reciprocating Pumps and Diaphragm Pumps

API 676 Progressive Cavity Pumps

API 676 Screw Pumps



API 685 Magnetic Drive Pumps

ANSI Centrifugal Pumps

JIS standard Centrifugal Pumps

AODD Pumps



Self Priming Pumps



Low Flow High Head Pumps



Firewater Pumps Package

Special Plastic/Metal/Ceramic pumps



Services Scope of Work

-> Pump Alignment at site & Pump Troubleshooting at site:



-> Motor Inspection and Overhaul:



-> Pump Installation and Commissioning:



-> Pump Inspection, Fire Pumps, Retrofitting and Overhaul, Diesel Engine & more:





**AIR-OPERATED
DIAPHRAGM PUMPS**

INNOVATIVE PUMP SOLUTIONS



Headquartered and produced in Grand Terrace, CA, USA, All-Flo is a leading manufacturer of air-operated double-diaphragm (AODD) pumps and fluid-handling solutions for industrial markets. Since 1986, our AODD pumps have provided customers with simple solutions for challenging applications. All-Flo's pumps are made from the widest range of metallic and plastic materials and are suitable for virtually any fluid transfer application. Our core markets are metal finishing, coatings, petrochemical, oil & gas, as well as a diverse range of other industrial markets.



PLASTIC PUMPS



METAL PUMPS



**FDA & HYGIENIC
PUMPS**



SPECIALTY PUMPS

Diaphragm Pumps for the Chemical Industry

Polypropylene, PVDF with Santoprene® or PTFE elastomers suitable for the chemical industry.

- FNPT (FBSPT), ANSI / DIN Flange
- Maximum pump temperature of 189°F (87°C)
- Maximum air pressure of 120 psi (8.2 bar)

Diaphragm Pumps for Mining and Dewatering

Santoprene® elastomers suitable for mining and dewatering.

- Tri-Clamp® adapter option available
- Liquid end made from Conductive Nylon, Polypropylene, PVDF, Aluminum, Anodized Aluminum or Stainless Steel
- Maximum pump temperature of 144°F (62°C) for plastic pumps and 189°F (87°C) for metallic pumps

Diaphragm Pumps for Oil and Gas

Geolast® or PTFE elastomers suitable for oil and gas.

- Tri-Clamp® adapter option available
- Liquid end made from Conductive Nylon, Polypropylene, PVDF, Aluminum, Anodized Aluminum or Stainless Steel
- Maximum pump temperature of 144°F (62°C) for plastic pumps and 189°F (87°C) for metallic pumps

ALL-FLO MARKETS

- Beer and Wine
- Chemical
- Coatings
- Food and Beverage
- Lubrication and Machinery
- Mining and Dewatering
- Oil and Gas
- Plating
- Semiconductor

The Company has devoted to the realization of pumps innovative for building technologies and components' modularity: through the microcasting used to build many parts, for example impellers, together with the design, the Company produces machines with high energy efficiency and low NPSH values.

The range includes centrifugal pumps with closed or open impeller according to ISO 5199- 2858 rule, vortex impeller with full passage, channel impellers, both horizontal and vertical arrangements. The range can be built in cast iron, stainless steel or special alloys.

The Company produces also a lighter series, cheaper but very versatile, in stainless steel AISI 316, with flow up to 200 m³/h.

MAIN APPLICATIONS

Salvatore Robuschi's centrifugal pumps can be used in many industrial fields: chemical and pharmaceutical industry (preparation of active ingredients), food industry (washing of fruits and vegetables, vacuum conveying and concentration), distillation, purification, tanning, textiles and in all those sectors that present pumping issues (suspended solids, products difficult to convey).

Process

RD
Closed impeller



RG
Semi-Open impeller



RB
Channel impeller



RC
Vortex impeller



Vertical

VERTICAL
Closed, Open, Channel and Vortex impeller



CANTILEVER
Vortex and Channel impeller



Close Coupled

HD
Closed impeller



HG
Semi-Open impeller



RS
Vortex impeller



Water

RN
Closed impeller



TS
Multistage



RAM
Peripheral impeller



CHEMICAL TRANSFER PUMPS

The pump is used for the transfer of a 71% urea solution to a storage tank. The required head is about 110 m.

The application is very critical due not only to the high pressure, but also the high temperature of 120 ° C which makes the liquid chemically very aggressive.

The RD - RG series are designed in accordance with ISO 5199 and ISO 2858, making it ideal for worldwide chemical or industrial process application. Pump is equipped to heavy duty bearing bracket and cartridge seal. RD can work in heavy conditions in terms of NPSHa, density and viscosity up to 500 cP.



AVIATION FUEL LOADING SYSTEM

Pump is mounted on a heavy duty and fully galvanised steel skid. Jet fuel A-1, is a flammable and dangerous liquid. Any fueling operation can be very dangerous, and aviation operations have characteristics which must be accommodated. As an aircraft flies through the air, it can accumulate static electricity. If this is not dissipated before fueling, an electric arc could occur and ignite fuel vapors. The RD - RG series are designed in accordance with ISO 5199 and ISO 2858, making it ideal for worldwide chemical or industrial process application. RD process pump, in closed-coupled arrangement, is able to satisfy the high standard required for ATEX ZONE 1 classified area with a small footprint.



CRUDE OIL EFFLUENT TANK

Crude oil is made up of a mixture of hydrocarbons, and the distillation process aims to separate this crude oil from broad categories of its component hydrocarbons, or "fractions." Refineries use complex processes to distil crude oil into fuels, such as gasoline, diesel, jet fuel and bunker oil, or raw materials for making plastics, solvents or detergents. Crude oil has viscosity up to 250 cSt. RCC cantilever pumps are able to work dry and do not need to be stopped when the level is too low. They can work continuously without having to be run by level probes. A key feature of cantilever pump is that there no bearings or bushings submerged therefore the pump can handle liquid with solids and operate dry.



ETHANOL DISTILLATION

Distillation in simple terms, is basically the process of separating a liquid or vapor mixture into it's component parts, through vaporization and condensation. Since alcohol boils at a lower temperature than water, it will turn to steam before the water does, and rise up in the still. Collect and cill the vapors of alcohol and collect the alcohol from the still. Our HG pumps, thanks to the semi-open impeller, can easily recirculate mixture of wort (juice) and alcohol without clogging problem. Furthermore they must ensure the movement of product in heavy conditions.



COOLING TOWERS

For cooling using a cooling tower, the water is drawn once from a river, lake or the sea depending on the power station's location, and fed into a collecting tank underneath the cooling tower. The water is drawn from there with pumps and transported through heat exchangers, then returned to the collecting tank via the cooling tower.

Our vertical sump pump RCV has the pump body immersed into the liquid, and the motor is mounted above the plate, keeping it away from the liquid. The discharge pipe is separated from the column pipe and the lubrication of the line bearings is normally obtained by means of the same pumped fluid.



PRETREATMENT FOR PAINTING

A high-quality conversion coating is essential for the durability of painted metal goods. The process of applying an inorganic conversion coating to a metallic surface involves removing any surface contaminants, then chemically converting the clean surface into a non-conductive, inorganic conversion coating. Our RBC cantilever pump works with aggressive cleaning and phosphating solution with fine suspended particles. RBC can to work dry and do not need to be stopped when the level is too low. It can work continuously without having to be run by level probes. Channel impeller is installed to increase the efficiency.

A key feature of cantilever pump is that there no bearings or bushings submerged therefore the pump can handle liquid with solids and operate dry.



BLAST FURNACE SCRUBBER

After primary separation in a cyclone, the blast furnace top gas is scrubbed with water in the annular gap scrubber to obtain the desired residual clean gas particulate concentration. The quantity of water required for scrubbing is relatively low and thus the gas cooling requirements normally determine the total water flow rate. Our RB pumps are used for water circulation in wet scrubbing system of a blast furnace. The pump is able to guarantee, thanks to the use of the channel impellers, high efficiencies even with dirty liquids.



FABRICS WASHING UNIT

The core of textile manufacture is fabric production. Fabrics can be created in many different ways, the most common being weaving, knitting or through production of non-woven fabrics. During dyeing and printing both hazardous chemicals and dye stuffs are used. Several RS pumps are installed in modular washing unit to rinse and neutralize fabrics after chemical processes. Heavy duty close coupled pumps are working with aggressive chemicals, as acetic acid or caustic soda solutions.

The hydraulic system is just as a continuous washing range with water flowing against the stream, independent water temperature controls in each kier, chemical dosing and possible vats separation to enable different chemical applications in the same cycle.





SRZS

Side Channel Pumps Designed for Critical Process Services

Side channel pumps fill the hydraulic performance void between positive displacement pumps and centrifugal pumps. Fully open “star” impellers interact with the side channel casing creating an intense transfer of energy to the pumped liquid or liquid / gas mixture. The corresponding pressure increase (pump head) equals 5 to 10 times the amount generated by a similar size centrifugal pump at the same RPM. Additionally, the centrifugal effect of the impeller combined with the unique SERO internal flow patterns, allow our pumps to effectively handle fluids with gas entrainment of up to 50% and also be self-priming.

Model SRZS is a proven state-of-the-art multi-stage, radially split segmented pump that combines the functionality of a low NPSH first stage impeller with the performance of a side channel design.

The SRZS features include:

- Exceptional Differential Pressures Developed at 1750 RPM
- Hydraulic Flexibility - Low Flows with High Head
- Steep Performance Curves for Precise System Control
- Ability to Pump Vapor Laden (up to 50%) Process Fluids
- Low NPSH Requirements to Prevent Cavitation
- Self-priming
- Multiple Sealing Options
- Modular Construction with Standardized Parts
- Field Interchangeability with Existing Units
- “Crafted In Germany” for Increased Reliability and Lowest Cost of Ownership

Applications

- **Condensate Pump Applications**
- **LPG Pump Applications**
- **Low Temperature Pump Applications**
- **Tank System Pump Applications**

High Pressure Pitot Tube Pumps

High pressure single stage centrifugal pump with advanced pitot tube technology.

Eight models available depending on requirements

Applications: Boiler feed and desuperheating, oil production, central cleaning systems, mining, hydraulic systems, petrochemical, steel mills, pulp and paper mills, turbine fuel feed, NOx suppression

Roto Jet Pump Applications:

- Petrochemical
- Power
- Pulp and
- Paper
- Wastewater
- Municipal, Industrial
- Food Processing / Beverage
- General Industry



Roto Jet API R11

- Designed to API 610
- Single and double seal
- Flanged connections
- Oil lubrication
- 316 Stainless Steel
- Flows to 150 GPM (34 m³ /
- Heads to 1500 Feet (457 m)
- Speeds to 4,858 rpm

Roto Jet RG 2x2

- Grease lubrication
- Single seal
- Ductile Iron
- Threaded connections
- Flows to 400 GPM (91 m³ /
- Heads to 2600 Feet (792 m)
- Speeds to 4,380 RPM



Meeting the needs of the Oil & Gas industry worldwide

Floway® Vertical Hydrocarbon Pumps are built to withstand the crucial requirements and conditions of the Oil & Gas market

The Floway Vertical Hydrocarbon Pump (VHP) is ideal for Oil & Gas applications due to superior quality, low vibration, less maintenance cost and specialized design.

We understand the importance of each sector and Floway® Pumps are adaptable for your specific processes

Upstream Exploration

Upstream exploration is a critical sector with a variety of services ranging from offshore systems such as platforms and FPSO's to onshore drilling rigs. Floway pump products are designed for the diverse critical applications in this sector.

- Offshore Exploration: offshore production platform fire-water, seawater lift and auxiliary
- Floating production, storage / offloading (FPSO): fire-fighting, seawater lift, process and auxiliary and offloading
- Onshore exploration: water injection, main oil line, fire-fighting and process and auxiliary

Midstream Transport

The midstream sector includes various hydrocarbon duties ranging from transportation over long distances between pump stations to terminal unloading/loading and tank farm storage. Floway has engineered reliable pump products for the wide range of applications included in these crucial duties.

- Pipeline transportation: booster and main line
- Import/export terminal: loading/unloading, firewater and booster
- Tank farm: transfer, storage and unloading

Construction Standards

- Hydraulic Institute
- NSF/ANSI 61 and 372
- ANSI B16.5 Class 150 through 1500 flange ratings
- Welding to ASME Section IX on all listed materials
- ASTM standards met for all materials supplied castings, forgings, and wrought materials
- Stress relief carbon steel to ASME Section VIII
- DIN
- BS
- CE Marking
- API 610

Downstream Refining / Petrochemical

The downstream sector including systems such as oil refining and gas processing requires the handling of fluids with extreme temperatures and pressures. Based on these extreme conditions, Floway has designed and engineered a wide range of dependable pump products and offers a variety of services to meet the demands of this sector.

- Gas processing: naphtha, propane, isobutane, reflux and cooling water
- Refining: boiler feed, process, cooling water, low-pressure auxiliary
- Petrochemical: process, booster, cooling water, low-pressure auxiliary



Global Certification Standards

- NEMA
- IEEE
- IEC





INNOVATIVE PUMP SOLUTIONS

FLOWAY® PUMPS

Vertical Turbine Pumps

FIRE PUMPS

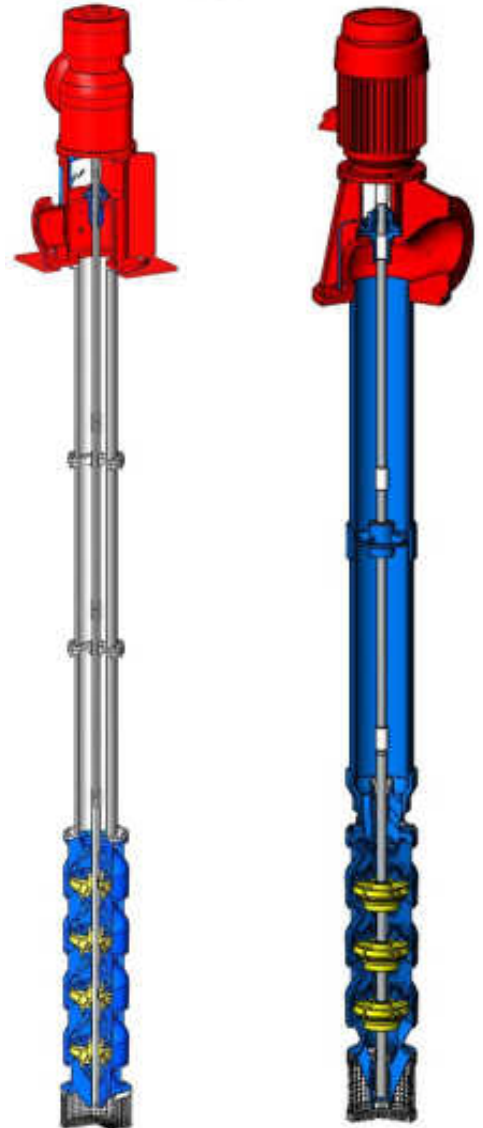
Floway® fire pumps are recognized worldwide for superior quality, top hydraulic performance and long service life, providing reliability and fire protection when it counts.

Floway® fire pumps are designed to provide the best fire protection possible. If a fire occurs, a reliable fire protection system is often the difference between minor or catastrophic damages and expenses due to property damage, destroyed records, and plant or factory downtime. Our pumps are listed, approved, and/or certified by the following standards and approving authorities to meet or exceed NFPA-20:

- Underwriters' Laboratories, Inc. (UL) (C-UL)
- Factory Mutual (FM)

Engineering Features

- Floway® vertical fire pumps are manufactured in accordance with NFPA 20, NFPA 2050 Hz and UL/FM standards
- Pressure ratings from 60 to 500 PSI
- Capacity ratings labeled from 250 to 5,000 USGPM (60-1140m³/hr)
- Static water level from 0 to 50 feet for product lubricated column and shaft assembly. Greater than 50 feet for oil lubricated column and shaft assembly



Floway® Fire Pump Parts — Material Selection

Parts	316 Stainless Steel	Bronze Fitted	Duplex
Bowls	316 SS A743 316 SS	Ni-Al Brz B148 C95800	Super Duplex SS A890 6A
Impeller	316 SS A743 316 SS	Ni-Al Brz B148 C95800	Super Duplex SS A890 6A
Bowl w/r	316 SS A743 316 SS	Ni-Al Brz B148 C95800	Super Duplex SS A890 6A
Lineshaft, couplings and hardware	316 SS A276	Monel™ B164	Super Duplex SS A 276
Bearing	Marine bearing Phenolic/Rubber	Marine bearing Phenolic/Rubber	Marine bearing Phenolic/Rubber
Fabrications (column and head)	Coated Steel A36/A53	Ni-Al Brz B271 B148 C95800	Super Duplex SS A240/A790
Bolting	316 SS A193/A194	Monel™ F467/F468	Super Duplex SS A479
Stuffing box	Cast iron A48 CL30	Ni-Al Brz B148 C95800	Super Duplex SS A890



INNOVATIVE PUMP SOLUTIONS



EnviroGear®, a product brand of PSG®, a Dover company, is a global provider of innovative, high-quality industrial gear pumps for the safe and efficient transfer of high-value and hard-to-seal fluids.

EnviroGear® E Series Pump

Your Seal-Less, Leak-Free Solution



Take your pump performance to the next level with EnviroGear® E Series Magnetically Coupled Seal-less Internal Gear Pumps.

This one-of-a-kind design eliminates leaks and reduces mechanical wear, helping increase the safety of site personnel and the environment. In addition, no other mag drive internal gear pump offers a lower upfront cost, lower total cost of ownership or more reliability than the E Series.

CAPACITY

15 gpm to 500 gpm
(3.4 m³/h to 113.6 m³/h)

MAX TEMPERATURE

500°F (260°C)

MAX PRESSURE

- Ductile Iron – 200 psi (13.8 bar)
- Carbon Steel – 200 psi (13.8 bar)
- Stainless Steel – 150 psi (10.3 bar)

EnviroGear® G Series Pumps

Your Alternative to Viking® Internal Gear Pumps



EnviroGear® G Series Internal Gear Pumps have you covered. As the high-quality, reliable alternatives to competitive models, G Series positive displacement gear pumps have the durability, flexibility and efficiency you need to safely and securely handle all your challenging fluid-handling applications. Whether it's simply time for an upgrade or you're looking for a jacketed pump to maintain process temperature and integrity during operation, replace your current pump worries with a durable, flexible and efficient solution that provides peace-of-mind performance backed by superior and experienced customer service and factory support.

AVAILABLE MATERIALS

- Cast Iron
- Carbon Steel
- Stainless Steel

CAPACITY

•15 gpm to 500 gpm
(3.4 m³/h to 113.6 m³/h)

MAX PRESSURE

- Cast Iron – 200 psi (13.8 bar)
- Carbon Steel – 200 psi (13.8 bar)
- Stainless Steel – 150 psi (10.3 bar)

MAX TEMPERATURE

•650°F (343°C)

EnviroGear® V Series Pumps

Kicking Viking® in the Asphalt



Introducing the EnviroGear® V Series Asphalt Pump. We understand that pumping asphalt is a challenge as it changes temperatures and can range from a solid to a liquid with a wide variety of fluid characteristics depending on the chemical makeup.

CAPACITY

•90 gpm to 450 gpm (20 m³/h to 102 m³/h)

MAX TEMPERATURE

•450°F (232°C)

ENVIROGEAR MARKETS

- Chemical Process
- General Industrial
- Mining
- Oil & Gas
- Food and Beverages

MAX PRESSURE

•100 psi (6.9 bar)



INNOVATIVE PUMP SOLUTIONS



Blackmer® is the leading global provider of innovative, high-quality sliding vane, centrifugal, screw and regenerative turbine pump, and reciprocating gas compressor technologies for the safe transfer of liquids and gases. Since 1903, Blackmer pumps and compressors have been helping customers optimize productivity and profitability while improving safety and environmental protection in the global chemical process, energy, transport, military & marine, general industrial, and oil & gas markets.

S Series Screw Pumps

Blackmer® S Series Screw Pumps are self-priming, double-ended positive displacement pumps that offer outstanding performance in the most demanding applications regardless of temperature, viscosity or pressure. The twin and triple screw designs provide complete axial balancing of the rotating screws and their timing technologies eliminate metal-to-metal contact within the pump.

Blackmer S Series pumps are available in four distinct lines, each having multiple model configurations and sizes: twin screw (WTG), twin screw with non-timing gear (NTG), multi-phase twin screw, and triple screw. Other features of **Blackmer S Series pumps** include compact design, ability to run dry for short periods, high suction lift and constant flow rates despite varying conditions. They are low noise and nearly pulsation-free with little fluid agitation, making them ideal for use with corrosive and non-corrosive, low or high viscosity, and clean or abrasive liquids.



S Series Twin Screw Pumps

Durable screw pump for applications in the chemical process, general industrial, transport and commercial marine markets



S Series Triple Screw Pumps

Positive displacement rotatory pump for handling clear, lubricating liquid without solid content



S Series pumps are available in a wide range of configurations, including horizontal, vertical, high temperature, high pressure and high viscosity. These pumps provide flow rates ranging from 0.5 to 2,500 L/min (2.2 to 11,007 gpm) at differential pressures up to 60 bar (870 psi). S Series twin screw pumps can handle viscosities from 0.5 to 200,000 mm²/s (cSt) and temperatures up to 350°C (662°F).



ZMK Technologies in Brief

- Industry: Highly engineered valve solutions and service for petrochemical plants and refineries
- DN 600 2500 (NPS 24 100") for petrochemical plants and refineries
- Headquarters Düren , Germany
- Part of Vexve Armatury Group since 2020



Typical Applications and Products

- Delayed coking double disc gate valves
- Ethylene double disc gate valves
- FCCU (Fluid Catalytic Cracking Unit) slide, butterfly , guillotine , diverter , goggle and vapour overhead isolation valves
- PDH (Propane dehydrogenation) double wedge valves
- Other critical processes and services
- Patents:
Double Disc Top & Bottom Unheading Device
Single and Double Disc Gate Valve for Ethylene Process



Manufacturing

- Manufacturing of valves in compliance with established standards as ASME and ISO 9001
- Manufacturing and high level quality assurance
- Testing including FAT



Application & Requirements engineering

We assist in specifying and validating the requirements for valves based on follow major points:

- Main process requirements and application
- Operating conditions (medium, pressure, temperature, etc.)
- Safety functions involved as identified and specified in risk analysis (e.g. HAZOP)
- Changes required for existing installations



Intech Pumps Indonesia Experiences

Job Reference:				
No.	Customer	Location	Scope of Work	Year
1	PT. Parker Engineering	Jakarta, Java	Pumps Units	2015
2	PT. Latinusa Tbk	Cilegon, Java	Pump Units	2015
3	PT. Asta Honda Motor	Cikarang, Java	Pump Units	2015
4	PT. JOB Pertamina Tomori	Tomori, Sulawesi	Spare Parts	2016
5	PT. Rekayasa Industri	Jakarta, Java	Pumps Units	2016
6	PT. Unilever Oleochemical	Medan, Sumatera	Spare Parts	2016
7	PT. Ecogreen Chemical	Batam, Sumatera	Spare Parts	2016
8	PT. JGC Corp	Jambi, Sumatera	Spare Parts	2016
9	PT. M3 Energy	Ketapang, Kalimantan	Spare Parts	2016
10	PT. Nindya Karya	Jakarta, Java	Pump Units	2016
11	PT. Rekayasa Industri	Jakarta, Java	Agitator Units	2016
12	PT. Catur Elang Perkasa	Jakarta, Java	Pump Units	2016
13	PT. JOB Pertamina Tomori	Tomori, Sulawesi	Spare Parts	2017
14	PT. Titis Sampurna	Jakarta, Java	Spare Parts	2017
15	PT. Chandra Asri	Cilegon, Java	Pump Units	2017
16	PT. Kaltim Metanol Indonesia	Kalimantan	Pump Units	2017
17	PT. Tsubaco Indonesia	Cikarang, Java	Pump Units	2017
18	PT. Krakatau Tirta Industri	Cilegon, Java	Spare Parts	2017
19	PT. Cabot Indonesia	Cilegon, Java	Spare Parts	2017
20	PT. Tsubaco Indonesia	Cikarang, Java	Pump Units	2018
21	PT. Krakatau Posco	Cilegon, Java	Pump Units	2018
22	PT. Pupuk Sriwidjaja	Palembang, Sumatera	Pump Units	2019
23	PT. JOB Pertamina Tomori	Tomori, Sulawesi	Spare Parts	2019
24	PT. Unilever Oleochemical	Medan, Sumatera	Spare Parts	2019
25	PT. Indrabas Purnama Makmur	Jakarta, Java	Spare Parts & Commissioning	2019
26	PT. Sinarmas Bio Energy	Bekasi, Java	Spare Parts	2020
27	PT. Sulfindo Adiusaha	Cilegon, Java	Pump Units	2020
28	PT. Cabot Indonesia	Cilegon, Java	Spare Parts	2020



Intech Pumps Indonesia Experiences

29	PT. Wilmar Nabati	Cilegon, Java	Pump Units	2020
30	PT. Alat Industri Utama	Bekasi, Java	Spare Parts	2020
31	PT. Clariant Indonesia	Bekasi, Java	Pump Units & Spare Parts	2020
32	PT. Cabot Indonesia	Cilegon, Java	Spare Parts	2021
33	PT. Sulfindo Adiusaha	Cilegon, Java	Pump Units	2021
34	PT. ALP Petro Industry	Jakarta, Java	Spare Parts	2021
35	PT. Sorini Towa Berlian	Babakan, Java	Spare parts	2021
36	PT. Unilever Oleochmeical	Medan, Sumatera	Spare Parts	2021
37	PT. Geo Dipa Energi	Dieng, Java	Spare Parts	2021
38	PT. Clariant Indonesia	Bekasi, Java	Pump Units	2021
39	PT. Indesso Aroma	Bogor, Java	Pump Units	2022
40	PT. Andalan Furnindo	Bekasi, Java	Pump Units	2022
41	PT. Sorini Towa Berlian	Babakan, Java	Spare parts	2022
42	PT. ALP Petro Industry	Jakarta, Java	Pump Units	2022
43	PT. Sulfindo Adiusaha	Cilegon, Java	Pump Units & Spare Parts	2022
44	PT. Ineos Aromatic	Grogol, Java	Spare parts	2022
45	PT. Cabot Indonesia	Cilegon, Java	Spare Parts	2022
46	PT. Smart Tbk	Jakarta, Java	Pump Units	2023
47	PT. JSG International	Jakarta, Java	Spare Parts	2023
48	PT. Cabot Indonesia	Cilegon, Java	Spare Parts	2023
49	PT. Ineos Aromatics	Grogol, Java	Supervision	2023
50	PT. Sulfindo Adiusaha	Cilegon, Java	Pump Units	2023
51	PT. Andalan Furnindo	Bekasi,Java	Spare Parts	2023

Contact Us

Please feel free to contact us if you need any further information.

Agra : Email/Phone Agra@intechpumps.com ; +62 811 8095 888

Bepe : Email/Phone Bepe@intechpumps.com ; +62 811 8688 161

Our Website : www.intechpumps.com