



-
- | Maintenance Services
 - | Engineering Design
 - | Project Management
 - | Steel Fabrication and Erection
 - | Mechanical Installation
 - | Structural Rehabilitation
 - | Civil Construction
 - | Electrical and Instrumentation

COMPANY PROFILE

www.surabaja.co.id

Contents

- 1 | **Company History**
- 2 | **Mission, Vision, Objectives, Values**
- 3 | **About Us**
- 4 | **Services**
- 5 | **Major Projects**
- 6 | **Contact Us**

| Company History

PT. SURA BAJA SOLUSI

Based on market demands, PT. Sura Baja Solusi, is an integrated steel solution company. It was first established in 2012 and start operated as specialist steel trading company. Along with global economic development, PT Sura Baja Solusi has characterized itself with competencies adding value within steel industry through trading, distribution, steel fabrication, engineering and construction.

An Engineering and Project Management Company, has identified previously untapped regional, and national markets which the company aims to enter. This organization is driven by a solid team of engineers and project managers with a wealth of industry experience and extensive client networks.



| Mission | Vision | Objectives | Values

MISSION

Providing the highest level of service excellence in the field of Engineering Design, Project Management, Steel Fabrication and Erection, Mechanical Installation, Civil Construction and Electrical and Instrumentation Installation, through our professional team and superior processes, in a cost-effective, quality-driven, honest and reliable business environment in order to exceed the expectations of our client base, thus fostering long-term working relationships.

VISION

- To be a major industrial company, nationally and internationally, sought after for its quality, innovation and focused solutions.
- To establish a long-term relationship with its customers, built on trust, while focusing on enhancing productivity, increasing efficiency and boosting profitability.



OBJECTIVES

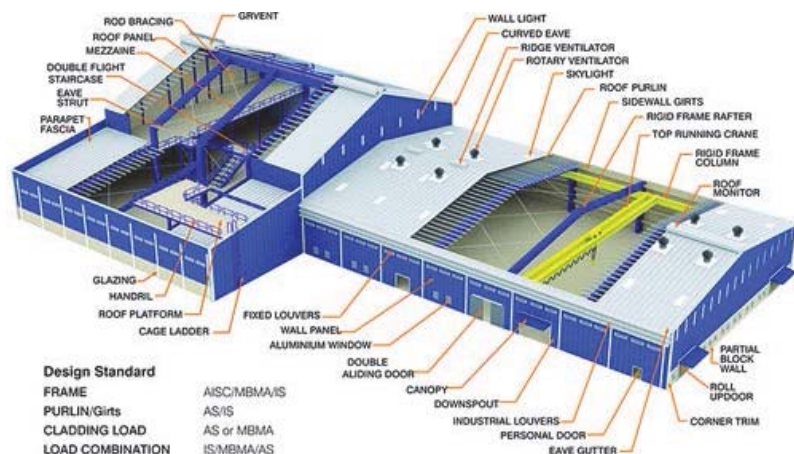
Our objectives are to

- Deliver services on time, in budget and to the required quality standards.
- Establish a long-term relationship with the client.
- Implement an effective quality assurance system.
- Grow business through excellent service delivery.
- Comply with all Safety Acts and Regulations.

VALUES

Our values are

- Integrity
- Accountability
- Commitment
- Excellence
- Respect
- Care



About Us

PT. SURA BAJA SOLUSI

As a provider of comprehensive engineering design, project management, steel fabrication and erection, mechanical installation, civil construction and electrical and instrumentation installation, the PT. Sura Baja Solusi serves the municipal, commercial, industrial and mining sectors. Its excellent infrastructure allows the PT. Sura Baja Solusi to serve all clients in a customer-centric manner. The PT. Sura Baja Solusi empowers previously disadvantaged communities by giving employment opportunities to local communities where the company operates.



| Services

CUSTOMER SERVICE

The PT. Sura Baja Solusi tailors its services to each customer and to local communities to ensure timely, effective response to customer needs. The PT. Sura Baja Solusi is strongly committed to safe and responsible project management, working diligently to ensure regulatory compliance and protecting the public's health and natural resources.

FABRICATION, CONSTRUCTION AND ERECTION

The PT. Sura Baja Solusi commitment to its customers begins with a vast background in fabrication, construction and erection. The emphasis in the fabrication and construction business is commercial and industrial construction. The Tiro Group does all steel construction in a safe and cost-effective manner.

ENGINEERING DESIGN

The PT. Sura Baja Solusi is equipped to do a variety of engineering design work, including

- Equipment specifications, design, selection and inspection
- Computer-based mechanical, structural, civil, electrical, control and instrumentation design, including 3D modelling.
- Cost-effective plant layout, with due consideration to maintenance requirements and access.

PROJECT MANAGEMENT

Project Management for the PT. Sura Baja Solusi includes managing capital and maintaining improvement projects, project planning and resource scheduling, preparing budgets and accurate project costing and feasibility studies, as well as implementing projects and managing contracts, while ensuring all processes and procedures comply with statutory requirements.

The systems and procedures developed for project implementation have been refined to provide the required control structure for large and small projects alike, whilst ensuring maximized service to projects with minimized system bottlenecking and slowdown. Project procedures and controls are tailored to client requirements and are constantly reviewed to keep abreast of project requirements and technological advances.

PT. Sura Baja Solusi offers all the services a customer would expect from a project engineering and management company. These include preparing commercial terms and conditions to suit the client, managing and reporting according to the client's in-house procedures, or using the company's own systems.

The PT. Sura Baja Solusi's procurement services include expediting, testing and inspecting. The company provides site control and management per discipline and can provide offices and conference facilities for site locations.

The focus on total quality project management ensures complete client satisfaction.



QUALITY

The in-house developed quality system for the PT. Sura Baja Solusi focuses on an integrated and complete quality control system. This includes

- Project progress planning and scheduling, method statement with work instructions, checklists, and quality plans per project and customer, including up-to-date QCP's for fabrication and erection.
- As-built documentation and "Data Packs" which are created as work progresses.
- Standard-setting and testing of all industrial used items.
- Ongoing supply of proof of quality documentation to clients.



OUR TEAM



COATING & HEMPEL PAINT



Hempel Technical Service provides expert technical advice to customers around the world to ensure their coatings are applied as efficiently as possible and will perform as promised.

At Hempel, we see ourselves as guardians of our customers' most valuable assets. From bridges and boats to power stations and homes, our coatings can be found around the globe, helping make our world safer, stronger, longer lasting and more beautiful.



Across the globe our coatings protect structures and equipment from corrosion. They extend asset lifetimes, reduce maintenance costs and bring colour to our homes and places of work. We work closely with our customers on every project, large or small. We are there every step of the way, offering advice, support and inspiration – and solutions that provide superior protection and performance.



FABRICATION & ERECTION CHEIL JEDANG TANK (SUS 304)



FABRICATION & ERECTION DOOM STEEL STRUCTURE PT. ADI KARYA

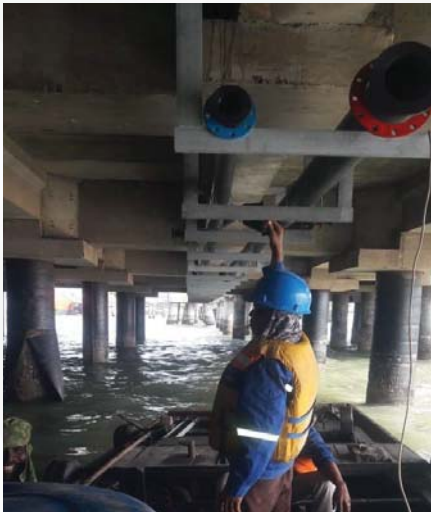


ERECTION STEEL STRUCTURAL TOWER PT. SANTOS



PROJECT

ENGINEERING & INSTALLATION HDPE PIPELINE AT JETTY PT. SIAM MASPION



REPAIR & RELINING BUTTERFLY VALVE PT. INDONESIA POWER PNS



CERAMIC LINING COAL BURNER PT. INDONESIA POWER PNS



PROJECT

RELINING HARD COMPOUND COAL PIPE PT. INDONESIA POWER PNS



REHABILITASI SYSTEM CONDENSOR PT. INDONESIA POWER PNS



PROJECT

RELINING CHUTE JT01 & JT02 IN PLTU REMBANG



FABRICATION BIO ENZIM TANK
PT. PETROSIDA GRESIK



REPAIR SCRAPER PLTU REMBANG



REPAIR CONDENSOR PIPE LEAKAGE AT PT. INDONESIA POWER PNS

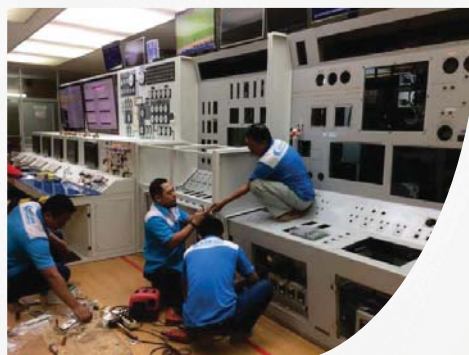


PROJECT

REPAIR ROLLER TYRE / PULVERIZER MILL



MODIFICATION CONTROL PANEL CCR UNIT 3&4 PJB GRESIK



FIRE TOWER
PT SIAM MASPION
TERMINAL GRESIK



PUMP ROOM
HYDRANT
BPWC PJB
CIRATA

NO	PROJECT	CUSTOMER	YEARS
1	BELT REPAIR KIT; SEALING 1	PT. HOLCIM INDONESIA	2019
2	PENGADAAN JASA REPAIR KIT BELT CONVEYOR	PT. INDONESIA POWER	2019
3	REPAIR CONDENSOR PIPE DIA 1600MM	PT. INDONESIA POWER	2019
4	RELINING COAL PIPE FOR ABRASION RESISTANT	PT. INDONESIA POWER	2019
5	RELINING COAL FEEDER FOR ABRASION RESISTANT	PT. INDONESIA POWER	2019
6	REPAIR CONVEYOR BELT	PT. HOLCIM INDONESIA	2019
7	REHABILITASI SYSTEM DRAINASE KONDENSER	PT. INDONESIA POWER	2018
8	JASA PERBAIKAN CHUTE HOPPER 5A TRANSFER TOWER 3	PT. INDONESIA POWER	2018
9	JASA RELINING CHUTE HOPPER 5B TRANSFER TOWER 3	PT. INDONESIA POWER	2018
10	PENGADAAN JASA REPAIR INSITU GRINDING ROLLER COAL MILL 1D	PT. INDONESIA POWER	2018
11	PENGADAAN CAT HEMPEL	PT PQ CORPORATION	2018
12	PENGADAAN GRINDING ROLLER	PT CDB	2018
13	DUAL PLATE	PT. HOLCIM INDONESIA	2016
14	SHELL KILN;16MO3;40 , SHELL KILN;16MO3;36	PT. HOLCIM INDONESIA	2016
15	DESIGN AND FABRIKASI PADDLE MIXER 7000 MM LENGTH	PT. PETRO JORDAN GRESIK	2014
16	INSTALLATION AND COMMISSIONING MOTOR CRUSHER 400 KW PLTU REMBANG	PLTU REMBANG	2014
17	FABRIKASI AND ERECTION VIBRATING SCREEN SEMEN PT. SEMEN MERAH PUTIH U/ PLANT CILEGON DAN DRIYOREJO GRESIK	PT. SEMEN MERAH PUTIH (WILMAR GROUP)	2013
18	INSTALLATION AND COMMISSIONING METAL DETECTOR, MAGNETIC SEPARATOR & BELT WEIGHER CONVEYOR BC 13&14 PLTU SURALAYA	PT. INDONESIA POWER	2013
19	FABRIKASI 11 UNIT ISO TANK FOR WASTE OIL	PT. FREEPORT MC. MORAN	2012
20	FABRIKASI CONVEYOR HOOD BW 1800 FIBERGLASS 160 PCS	PT. FREEPORT MC.MORAN INDONESIA	2012

No	Customer	Nama Pekerjaan	Years
1	PT Indonesia Power UJP Pangkalan Susu Omu	Pengadaan Bahan Kimia Proteksi Korosi	9/17/2019
2	PT Indonesia Power UJP Pangkalan Susu Omu	Pengadaan Jasa Repair Kit Belt Conveyor	3/20/2019
3	PT Indonesia Power UJP Pangkalan Susu Omu	Pengadaan Material SE - Devcon Titanium Putty	4/22/2019
4	PT Indonesia Power UJP Pangkalan Susu Omu	Pengadaan Material SE - Devcon Surface Wetting Agent	4/4/2019
5	PT Indonesia Power UJP Pangkalan Susu Omu	Pengadaan Material SE - Devcon Wear Guard	4/30/2019
6	PT Indonesia Power UJP Pangkalan Susu Omu	Pengadaan Material Pendukung Perbaikan Line Inlet Condenser #A Unit 2	6/27/2019
7	PT Indonesia Power UJP Pangkalan Susu Omu	Jasa Repair Institusi Grinding Roller 3 dan 4 Coal Mill Unit 2	9/1/2019
8	PT Indonesia Power UJP Pangkalan Susu Omu	Jasa Repair Institusi Grinding Roller 5 dan 6 Coal Mill Unit 2	9/5/2019
9	PT Indonesia Power UJP Pangkalan Susu Omu	Jasa Repair Institusi Grinding Roller 1 & 2 Coal Mill Unit 2	
10	PT Indonesia Power UJP Pangkalan Susu Omu	Pengadaan Relining Chute Hopper (TT-1) Transfer Tower 1 Line BC 1-A	11/13/2019
11	PT Indonesia Power UJP Pangkalan Susu Omu	Pengadaan Relining Chute Hopper (TT-1) Transfer Tower 1 Line BC 1-B	11/13/2019
12	PT Indonesia Power UJP Pangkalan Susu Omu	Pengadaan Relining Mill 2D Using Densit Wearflex 2000	9/2/2019
13	PT Indonesia Power UJP Pangkalan Susu Omu	Jasa Rehabilitasi System Drainase Kondenser Unit 2	4/12/2019
14	PT Indonesia Power UJP Pangkalan Susu Omu	Revitalisasi HBV	8/24/2019
15	PT Cogindo Daya Bersama	Pekerjaan Perbaikan Ceramic Lining Coal Burner	5/15/2019
16	PT Cogindo Daya Bersama	Pengadaan Jasa dan Material Relining Coal Pipe PLTU Pangkalan Susu Omu	4/12/2020
17	PT Cogindo Daya Bersama	Pengadaan Material Devcon PLTU Pangkalan Susu	4/21/2020
18	PT INKA	Pengadaan Steel Plate	1/16/2020
19	PT INKA	Pengadaan Steel Plate	1/16/2020
20	PT INKA	Pengadaan Steel Plate	5/13/2020
21	PT INKA	Pengadaan Steel Plate	5/13/2020
22	PT INKA	Pengadaan Steel Plate	7/16/2020
23	PT PJB UBJOM PLTU Pacitan	Pengadaan Mesin Las untuk Toolkeeper - RENTAL Outage	6/30/2021

No	Customer	Nama Pekerjaan	Years
24	PT PJB UBJOM PLTU Rembang	Repair Kit Belt Conveyor	5/4/2021
25	PT PJB UBJOM PLTU Rembang	Pengadaan Adhesive Repair Belt Conveyor	5/4/2021
26	PT PJB UBJOM PLTU Rembang	AI PLN - Rehabilitasi Steering Idler BC 6	3/1/2021
27	PT PJB UBJOM PLTU Paiton	Plate Metal 2500 x 2000x10 mm	3/24/2020
28	PT Solusi Bangun Indonesia Tbk	Epoxy;R-Flex;Belt Repair Kit;MFG Devcon	1/16/2020
29	PT Solusi Bangun Indonesia Tbk	Epoxy;R-Flex;Belt Repair Kit;MFG Devcon	7/1/2019
30	PT Solusi Bangun Indonesia Tbk	Epoxy;R-Flex;Belt Repair Kit;MFG Devcon	7/1/2019
31	PT Solusi Bangun Indonesia Tbk	Epoxy;R-Flex;Belt Repair Kit;MFG Devcon	11/15/2019
32	PT Holcim	Epoxy;R-Flex;Belt Repair Kit;MFG Devcon	3/4/2019
33	PT Semen Bosoa Maros	Wear Plate	9/23/2019
34	PT Kurnia Cipta Mandiri Abadi	Panel Box	9/10/2020
35	PT Solusi Bangun Indonesia Tbk	Fabrikasi Pipa Fly Ash	5/23/2022
36	PT Solusi Bangun Indonesia Tbk	Epoxy;R-Flex;Belt Repair Kit;MFG Devcon	
37	PT Indonesia Power PLTU Pangkalan Susu Omu	Jasa Rebuild Grinding Tyre Mill 4C	6/11/2022
38	PT PJB UBJOM PLTU Pacitan	Pengadaan Valve, Hose dan Nozzle Hydrant - K3	5/27/2022
39	PT PJB UBJOM PLTU Pacitan	Pengadaan Sewa Portable Genset untuk Overhaul Trafo SST - MO Listrik	7/17/2022
40	PT PJB UBJOM PLTU Pacitan	Pengadaan Valve, Hose dan Nozzle Hydrant - K3	10/13/2021
41	PLTU Banjarsari (Sub Kon)	Pengadaan Jasa dan Penggantian Chute Beserta Lining Area Crusher House PLTU Banjarsari 2x135 M	4/26/2022
42	PT Teknologi Karya Abadi	Supply Plat SUS 304 & 316L	4/27/2023
43	PT Teknologi Karya Abadi	Supply Plat 316 (China)	4/28/2023
44	PT Teknologi Karya Abadi	Fabrikasi Shell	4/29/2023
45	PT Teknologi Karya Abadi	Perforated Drawing	4/30/2023
46	PT Teknologi Karya Abadi	Supply Plate SUS 316 Malaysia	5/1/2023
47	PT Lintech Duta Pratama	Supply Material Densit Wearflex 2000	7/2/2023
48	PT PLN Nusantara Power	Fabrikasi Vane Wheel Pulverizer	9/3/2023
49	PT PLN Nusantara Power	Supply wear Plate	9/4/2023
50	PT. PLN Indonesia Power	Fabrikasi Chute TT201	23/7/2023



..



**SURA BAJA
SOLUSI**

PT. SURA BAJA SOLUSI

Komp. Ruko Grand City B-20 JL. Rungkut Mutiara, Surabaya 60293 Indonesia



+62 31 878 52076



sales@surabaja.co.id



+62 812 1314 3420