



# PT SURABAYA EGAMEKINKA PRATAMA

# ***ABOUT US***

Surabaya Egamekinka Pratama commenced business in 1988 with a focus on pump Engineering. After years of experience in the field, we now have offices throughout Indonesia. Our professional and well trained teams offer reliable products and provide responsible solutions for industrial plants in Indonesia. Surabaya Egamekinka Pratama is well supported by reputable principals from the USA and Europe.



**AKHMAD SISWADI**  
*Commercial Director*



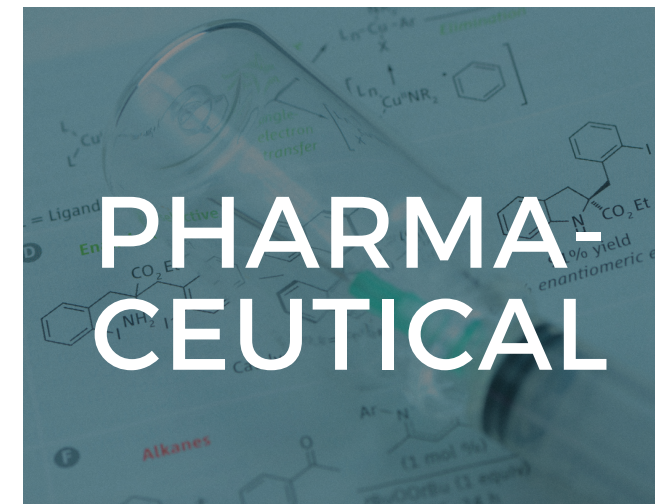
**ARIF RUKMANTORO**  
*Technical Director*



**DANI SUMYARTONO**  
*President Director*



# MARKET SEGMENTS





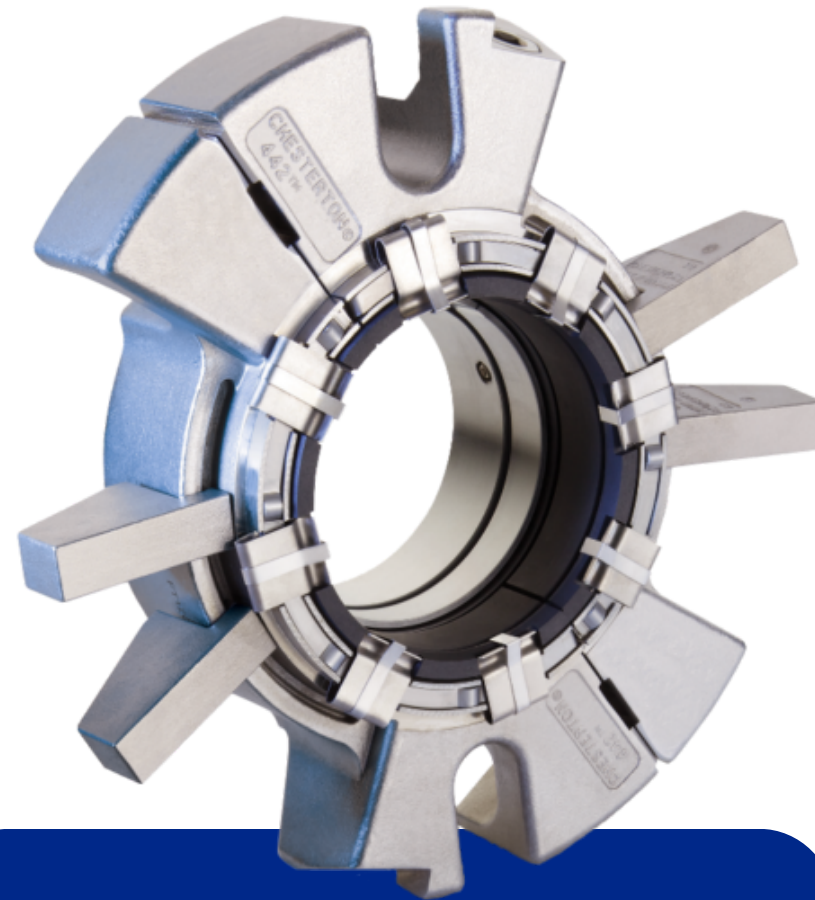
# ***BRANDS WE REPRESENT***





# PRODUCT RANGE

*Below are some examples of our products. Contact us for more product range info.*



## Chesterton Mech Seal 442

Ideal for equipment that is difficult and time-consuming to disassemble

- large pumps
- vertical pumps
- horizontal split case pumps



## Hiller DecaOil (3) Three-Phase Decanter Centrifuge

A sophisticated solid-bowl centrifuge especially designed for highly efficient, simultaneous sedimentation of solids and separation of two immiscible liquid phases

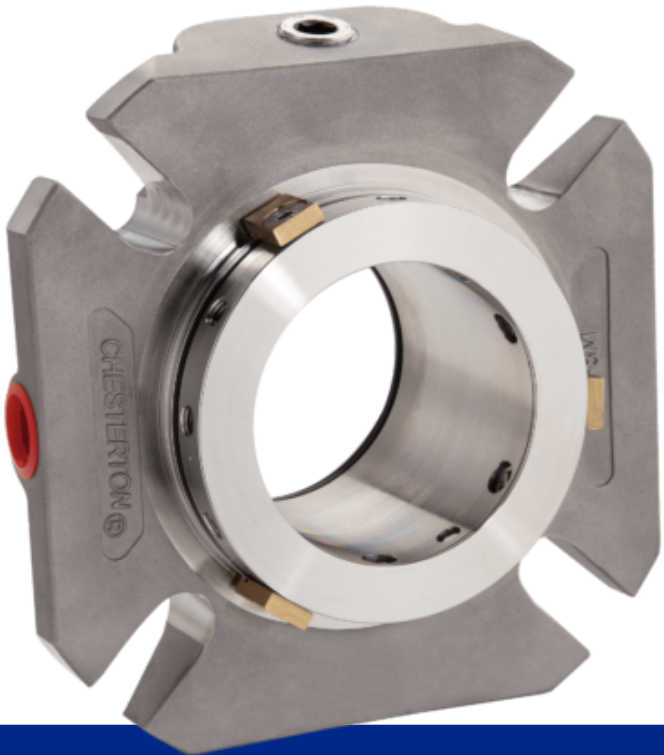


## Korting Gas Scrubbing Plant Type GWA DN400

- Simple designs
- Little maintenance required
- No fire risk in the scrubber
- Combination of gas conveying with dedusting and absorption

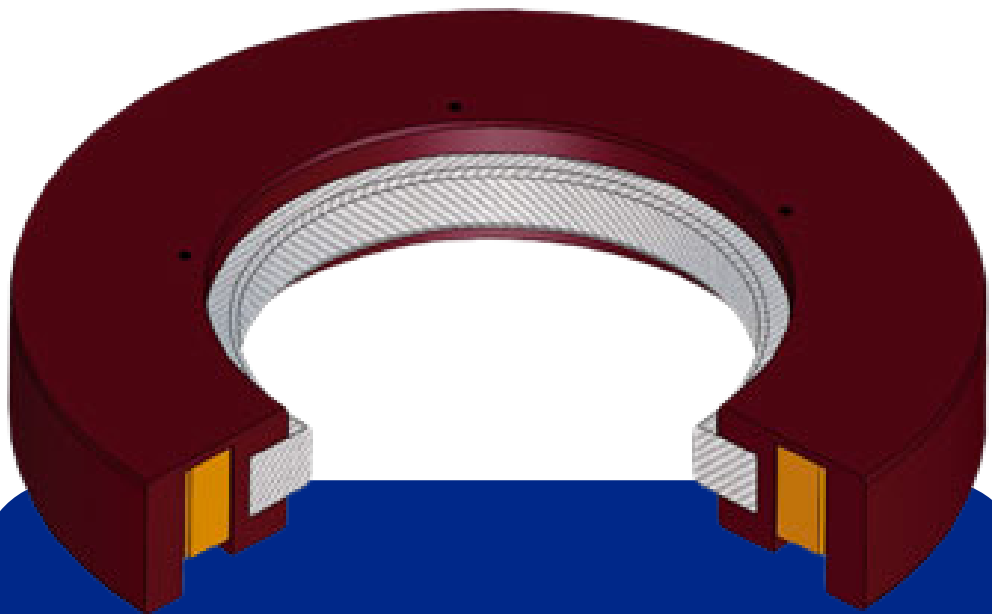


# PRODUCT RANGE



1810 Heavy Duty Modular  
Single Cartridge Seal

SIZE	PRESSURE	SPEED
25 mm - 120 mm (1.00" - 4.75)	711 mm or 28" Hg Vacuum to 40 bar g (600 psig*)	25 m/s (5000 fpm)



Matrix Rotary Seal for Large  
Runout

SIZE	PRESSURE	SPEED
50 mm - 762 mm (2 - 30)	0.03 (5) (psi)	15 (3000) (m/s (ft/min)



2810 Heavy Duty Modular  
Double Cartridge Seal

SIZE	PRESSURE	SPEED
25 mm - 120 mm (1.00" - 4.75")	711 mm or 28" Hg Vacuum to 40 bar g (600 psig*) 17 bar g (250 psig) outboard	25 m/s (5000 fpm)





# ***EGAMEKINKA SERVICES***

To fulfill our customer satisfaction PT Surabaya Egamekinka Pratama provide our customer with:

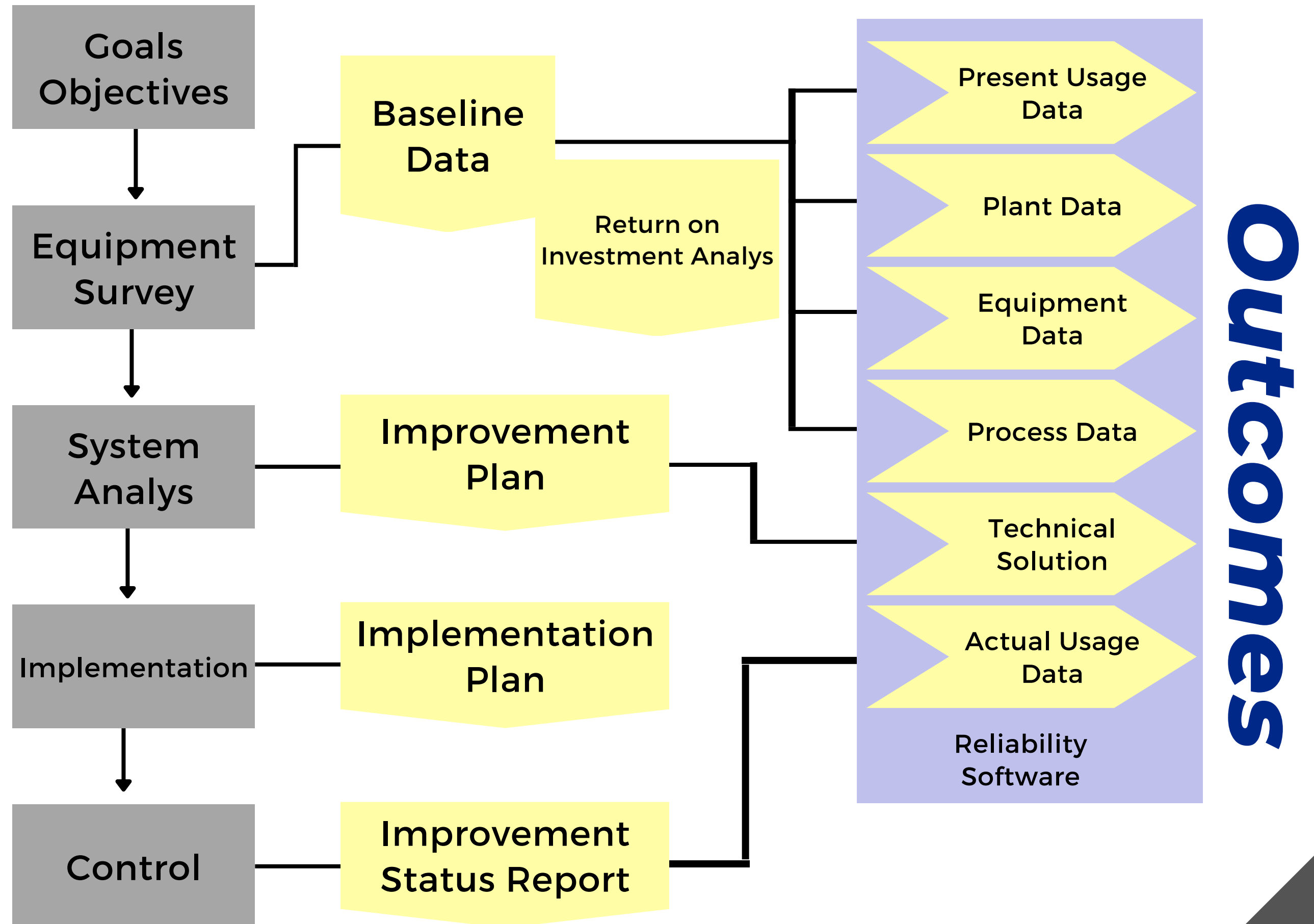
- Service Contract
- Cost Reduction Program
- Repair & Upgrade of Pumps
- Hydraulic/Pneumatic Cylinders & Rotating Equipment



# PROCEDURE

1. **Define**
2. **Measure**
3. **Analyze**
4. **Improve**
5. **Control**

## Processes

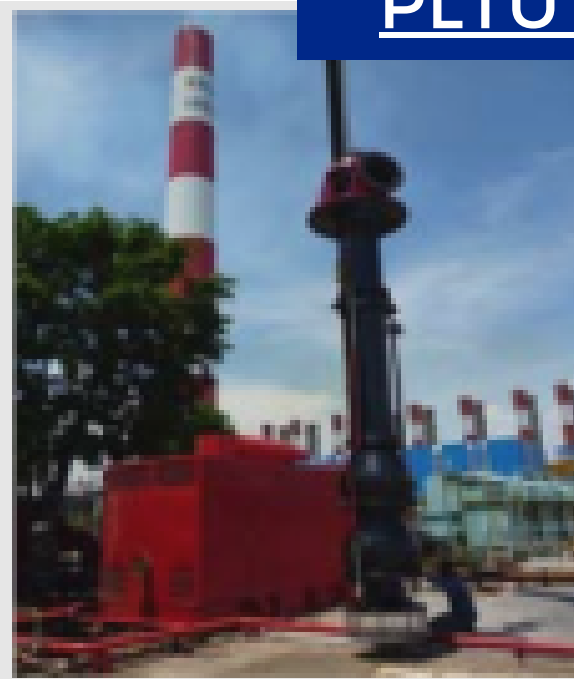




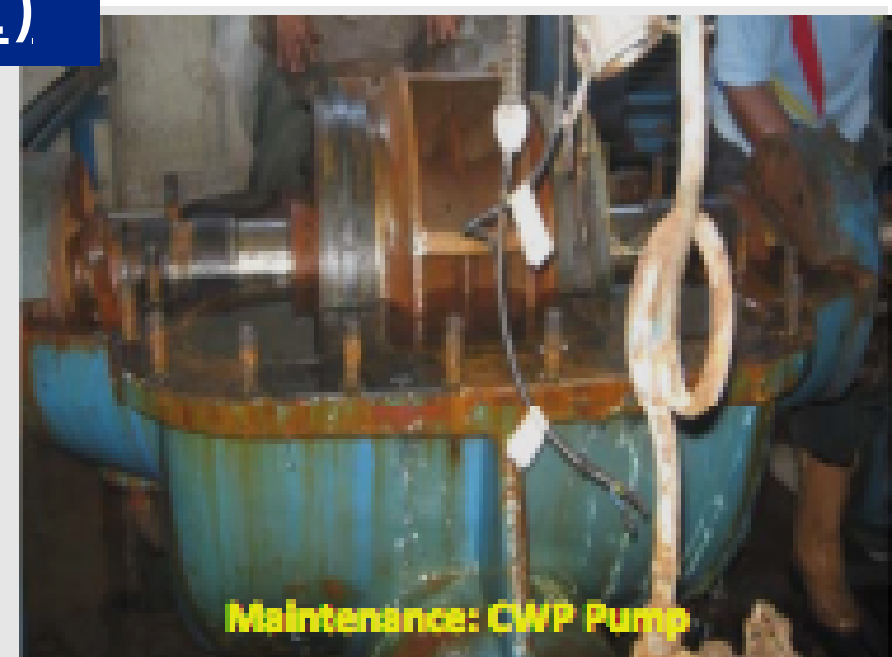
# ***EXPERIENCES***

## PUMP OVERHAUL

PLTU PJB Gresik (2011):



PLTU PJB Kendari Kendari (2012)



# ***EXPERIENCES***

## PUMP REPAIR



Service & Repair  
PERTAMINA Gresik - OFFSHORE (2014)



# ***EXPERIENCES***

## PUMP IMPROVEMENT



Turbine Pump Overhaul  
(Bingham Pump) (Pertamina RU IV  
Cilacap 2015)



Fire Pump Overhaul (Gryphon Pump)  
(Technical Supplies Company "TESUCO"  
2015)



# ***EXPERIENCES***

## HEAT EXCHANGER REPLACEMENT



PERTAMINA RU IV Cilacap (2016)



# ***EXPERIENCES***

## REFURBISHMENT - COATING BLAKMER PUMP

**BEFORE**



**AFTER**



PT Wilmar Nabati Indonesia (2019)



# ***EXPERIENCES***

## JET SCRUBBER KORTING



PT Petrokimia Gresik (2022)





# SUCCESS STORY

LOCATION	Balongan, Indramayu, Mid Java
PLANT AREA	Fuel Rifenery
EQUIPMENT	Reactor & Re-Generation Tower
QUANTITY	1 Unit
CAPACITY	2500 T/day
FLUID SEALED	Catalyst, Naphta & H2
TEMPERATURE	565 deg.C
PROBLEM	Leaked by thermal cylcing process
SOLUTION	Upgrade to SteelTrap LiveLoading System
RESULT	Extend Turn-Around periode up to 5 years



# SUCCESS STORY



LOCATION	Maintenance Area I
PLANT AREA	HOC (Heavy Oil Complex)
EQUIPMENT	Removal Card 140 - PX - 54 A/B
POWER	200 Bar
QUANTITY	2 Unit
Q & H	5 Ton & 270 cm
PROBLEM	Ex. broken
SOLUTION	Make New / Fabrication
RESULT	Still well performing





# SUCCESS STORY



LOCATION	Maintenance Area 1
PLANT AREA	Fuel Rifenery
EQUIPMENT	Power Pack Removal Card 140-PX-54 A/B
POWER	Electric motor 7.5 HP
SPEED	1460 Rpm
PRESSURE	210 Bar
QUANTITY	2 Unit
CAPACITY	100 Ltr
FLUID SEALED	Turalic
TEMPERATURE	80°C
PROBLEM	Ex. No more problems
SOLUTION	Make New / Fabrication
RESULT	Still Well performing



# NETWORK LOCATION

## PT SURABAYA EGAMEKINKA PRATAMA



### Sidoarjo

Lingkar Timur KM 5,5  
Pergudangan Safe N Lock  
Blok 1 Kab. Sidoarjo, Jawa  
Timur 61271



## PT SEJAHTERA TRIDAYA PRIMA (PARENT COMPANY)

### Head Office

Plaza Aminta 2nd Floor Suite 202  
Jl. Let. Jend. TB. Simatupang Kav. 10  
Kel. Pondok Pinang, Kec. Kebayoran  
Lama Jakarta Selatan, 12310

### Workshop

Jl. Quarry D No. 58, Kp. Lulut RT  
02/03 Desa Lulut, Kec.  
Klapanunggal Bogor, Jawa Barat  
16710

### Tanjung - Kalsel

Jl. Anggrek 6 RT 05 No. 93A  
Pembataan, Kelurahan Belimbing  
Raya Kec. Murung Pundak Kab.  
Tabalong 71571



# THANK YOU



031-8077730 / 8077731



surabaya@egamekinkasby.com