

AirTAC

PNEUMATIC EQUIPMENT



**Pneumatic
Hydraulic
Electrical
Valve Process**



PT. Eraperkasa Maju Cemerlang

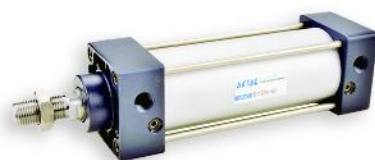
Mechanical-Electrical Engineering & Supply

www.eraperkasa.com

AirTAC

At present, the product of AirTAC have been widely applied machinery equipment, such as food, environment protection, printing, carpentry, textile, printing and dyeing, railway, packing, construction machinery, welding, plastics, rubber, paper-marking, pharmacy, medical treatment, chemical industry, mine, tobacco, glass and ceramic, instrument and valve and automatics industry fields such as electron and automobil. Our customers involve many famous enterprises at home abroad

ACTUATORS



SC Series



SAI Series



SDA Series



MI Series

PREPARATION UNITS



GPR Series



GAC Series



GAFC Series



ADW Series



BFC Series



GAFR Series



GPF Series



AFR Series



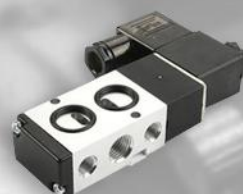
GAR Series

**AUTHORIZED
DISTRIBUTOR**

ACCESORIES



3V Series



4M Series



4H Series



4V Series



7V Series



ESV Series



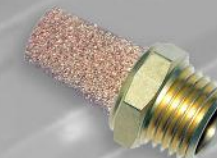
4HV Series



2W Series



PC Series



BSL Series



PSA Series



PL Series



PU Series



PSL Series



Tube Series

AirTAC



Valve Process

Valve is a device attached to the piping system to control fluid flow. Valve can be operated manually and mechanically / electrically.

Butterfly Valve



Gate Valve



Ball Valve



Check Valve



Knife Gate Valve



Globe Valve



Autonics

Sensors & Controllers

Sensors

Photoelectric Sensors
Fiber Optic Sensors
Door / Door Slide Sensors
Area Sensors
Proximity Sensors
Pressure Sensors
Rotary Encoder



Controllers

Temperature Controllers
Temp./Humidity Transducers
Power Controllers
Counters, Timers,
Panel Meters, Display Units
Pulse(Rate) Meters
Touch Screen/Logic Panels
Field Network Device
Sensors Controllers
Switching Power Supplies



Stepper Motor

2, 5-Phase Stepper Motors
2, 5-Phase Stepper Motor Drivers
Motion Controllers



Control Switch

Push button Switches
Selector Switches
Emergency Switches
Pilot Lamps
Switch Accessories
Buzzers, Digital Switches
Sockets, Interface Terminal



MECHANICAL & ELECTRICAL ENGINEERING

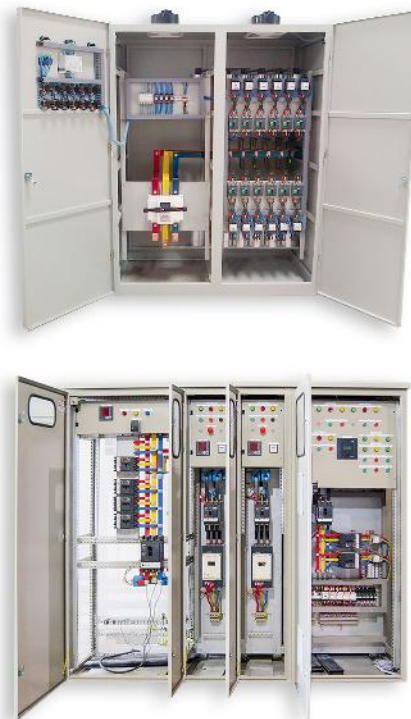
Hydraulic System can be found in a wide variety of applications, from small assembly process to integrated steel and paper mill applications. Hydraulics enable the operator to accomplish significant work (lifting heavy loads, turning asphalt, drilling precision holes, etc)

We serve the manufacture of electrical panels (Capacitor Bank, SDP, MDP, LVSDP, LVMDP, AMF/ATS, MCC, COS, etc)

HYDRAULIC SYSTEM



ELECTRICAL PANEL



- SDP
- MDP
- LVSDP
- LVMDP
- AMF/ATS
- MCC
- COS
- Capacitor Bank



PT. Eraperkasa Maju Cemerlang

HEAD OFFICE

Kawasan Industri Candi Blok 6 No.1J
Jl. Gatot Subroto - Ngaliyan
Semarang 50181 - Jawa Tengah
Telp. +62247627090 / 76469141
email : semarang@eraperkasa.com

REPRESENTATIVE OFFICE

Ruko Delta Sari Indah AN 53
Sidoarjo 61256 - Jawa Timur
Telp : +62318541512 / 8541513
email : surabaya@eraperkasa.com