

# Company Profile

PT. Wahana Datarindo Sempurna  
Jl.Kemang Timur No.86 Jakarta Selatan



# Introduction



PT. Wahana Datarindo Sempurna (Wadas)  
itself was established in 1986

Our businesses are Information Technologies Solutions  
(Software, Hardware & Development) supported by  
qualified expert in providing end to end solutions.  
Our customers are from multiple verticals such as  
Retail, Manufacture, Hospitality, Healthcare,  
Transport/Logistic, Wholesale Distribution  
as well as after sales services for best  
customers experience.

**Freddy Danny**  
*Managing Director*





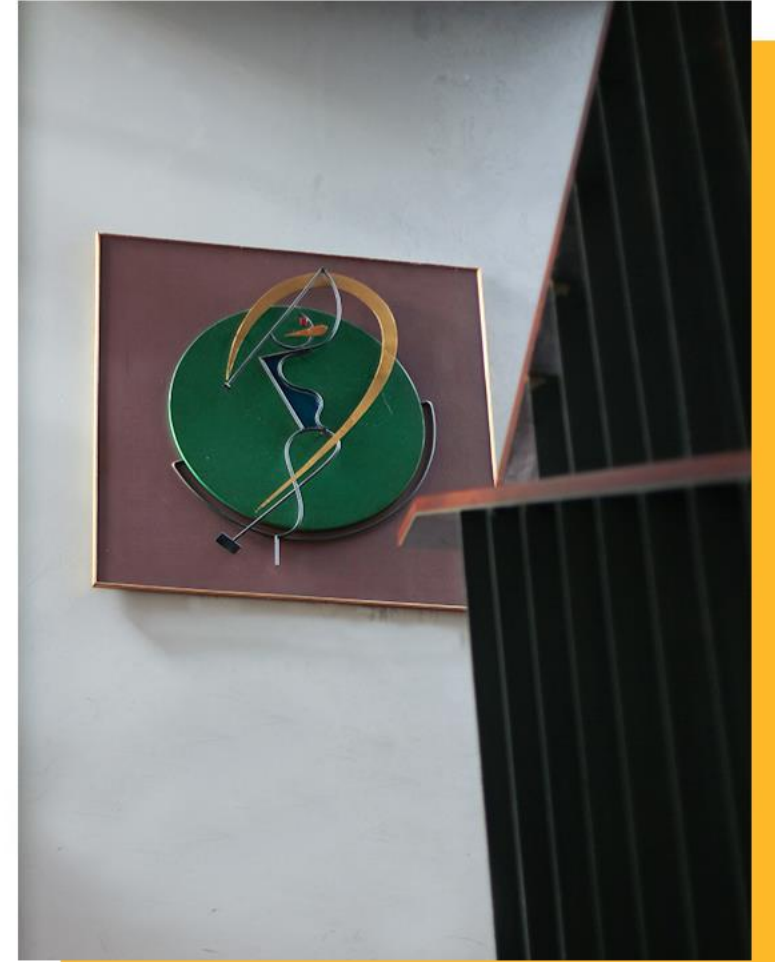
# Mission and Vision

## PT. Wahana Datarindo Sempurna

is an established in 1986, is an Information Technology's Company. We provide business & industrial IT Solutions as Hardware Business Partner/Distributor and Software Applications. We also as a System Integrator, give solutions, support and services to customer needs in ecosystem such as Smart Technology-Green Energy ( Solar Cells)

## and **also** Our Vision

as a Top-Quality nationwide provider in IT Solutions.



# Services

---



**Maintenance Services**

**Professional Services**

**Technical Support**

## Locations

### Jakarta

Jl. Kemang Timur No. 86  
Jakarta Selatan, 16830

### Medan

Jl. Puri Gang Nangka No.1  
Medan 20215

### Makassar

Komplek Minasari B14 Blok A1 No. 12  
Makassar 92111

### Surabaya

Jl. Wonorejo 1 No. 105 B Tegalsari  
Surabaya 60262

### Cikarang

Paragon Bussines Park Blok A No. 88B  
Bekasi 17550

# Our Partners





# Our Customers



# Line Matrix Printer ■ ■ ■

For more than 40 years, Printronix has been addressing global customer needs in the supply chain space by providing enterprise grade industrial printing solutions. Featuring robust energy-saving line matrix printers, our products streamline operations reduce costs and help organizations sharpen their competitive edge.



The printronix S809 Reliable, industry leading 24-pin price/performance-built to be the toughest fastest and quietest in its class.



The Printronix P8000ZT/P8000H ZT offerings are specialized cartridge line matrix printers designed for businesses using multi-part and serialized documents that require print on demand, single wasted forms and reduce operating costs



The P8000/P8000H Enclosed Cabinet is the preferred choice for print environments where acoustic need to be kept to a minimum.



The Enclosed Pedestal comes equipped with all the built-in quality, reliability, and performance of the top-of-the-line. Printronix Cabinet Printer, but in smaller and more compact footprint.



The P8000/P8000H Cartridge series delivers the most flexible design adaptable functionality and manageable savings of any line matrix printer. The Open Pedestal models combine a small rolling footprint with ease of forms.



Combines the simplicity of PDF & PostScript printing, with the dependability, capability, and low cost ownership only line matrix technology can deliver.



# Barcode Scanner

A barcode reader (or barcode scanner) is an electronic device that can read and output printed barcode to a computer. Like a flatbed scanner, it consists of light source, a lens and a light sensor translating optical impulses into electrical ones.



## Handheld Barcode Scanner



## Hands-free Barcode Scanner





# Mobile Computer



Bluebird Pidion  
EF-400



Bluebird Pidion  
EF500



Bluebird Pidion  
VF550



M3 OX 10



M3 UL10



Zebra TC21



Zebra TC25



Zebra MC3300



Zebra MC9300



Keyence BT1550



Keyence  
BT-W100



Honeywell  
EDA 51



Honeywell CK65



Honeywell CK75



A portable data terminal, or shortly PDT, is an electronic device that is used to enter or retrieve data via wireless transmission (WLAN or WWAN). They have also been called enterprise digital assistants (EDA), data caputer mobile devices batch terminals or just portables.



**Zebra  
ZD220**

# Barcode Printer

A barcode printer is a printer designed to produce barcode labels which can be attached to other objects. Barcode printers use either direct thermal or thermal transfer techniques to apply ink to labels. Thermal transfer printers use ink ribbons to apply the barcode directly into the label while thermal transfer printers use heat to blacken the barcode onto the label.



TSC Alpha 2R



TSC Alpha 3R



TSC Alpha 4L



Honeywell  
PC42t Plus



Honeywell PC43t



Intermec PC43D



Printronix T4000



Printronix T6000



Printronix T8000



Bixolon SPP  
R-210



Bixolon SPP  
R-310



Bixolon SPP  
L-310



Zebra GT800



Zebra ZD230



TSC ME240



TSC 246M Pro



Intermec PM43



Intermec PR2/PR3



Intermec PB Series



Zebra ZQ Series



Printronix T800



TSC TE200



Intermec PM42a



Zebra ZT230



Zebra ZT220





FEC XPOS



Sunmi T2 Dekstop



A point of sales system encompasses the hardware, software, and support that manage that transaction, including credit card processing, and the post-transaction operations that lead to customer fulfillment, wether in retail or restaurant setting.



Pioneer Cypruss



Sunmi T2 Mini



Pole Display



Pioneer Stealthtouch 3



Urovo i9100 Smart POS



Cash Drawer



Pioneer Dash T3 Plus

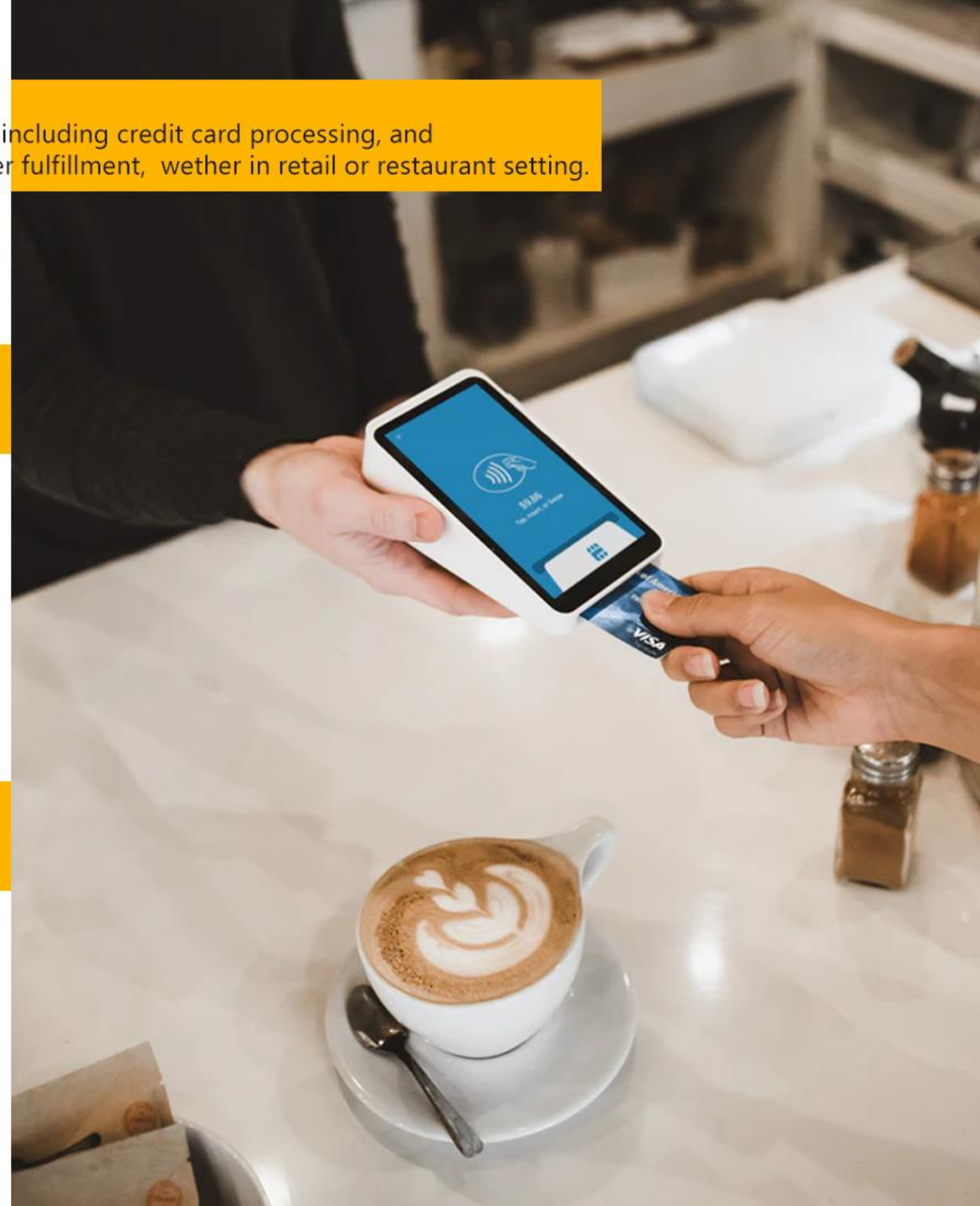


Urovo i9000 Smart POS



Receiver Printer

# Point Of Sale



# RFID Solution

Radio-frequency identification (RFID) uses electromagnetic fields to automatically identify and track tags attached to objects. The tags contain electronically-stored information. Passive tags collect energy from nearby RFID reader's interrogating radio waves. Active tags have a local power source (such as a battery) and may operate hundreds of meters from the RFID reader.



RFID Printer Label



RFID Mobile Reader

RFID Reader and Antenna



RFID Tag





# CCTV & Access Point



Protecting lives, building and assets in our aim. The product portofolio includes video surveillance, intrusion detection, fire detection and voice evacuation systems as well as access control and management systems. We will protect your company with our security and safety system.



# Thermal Camera

Effective with no direct contact, check quickly, remote checking, large monitoring area, detection of many people.

High resolution with vox uncooled focal plane detector, for Pro 400\*300, lite 256\*192



DH-TPC-BF5421-T Pro & Lite



DH-TPC-HBB

## Application Scenario :

Airport



Luxury Hotel



Shopping Center



Railway Station



Hospital







# Thermal Camera

Effective with no direct contact, check quickly,  
Low cost, direct warning system, reduce human  
resources and reduce the risk being exposed  
directly.



DHI-ASI7213X-T



DHI-ASI7223X-A-T

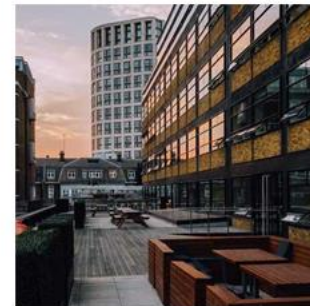
Factory



School



Office



Warehouse

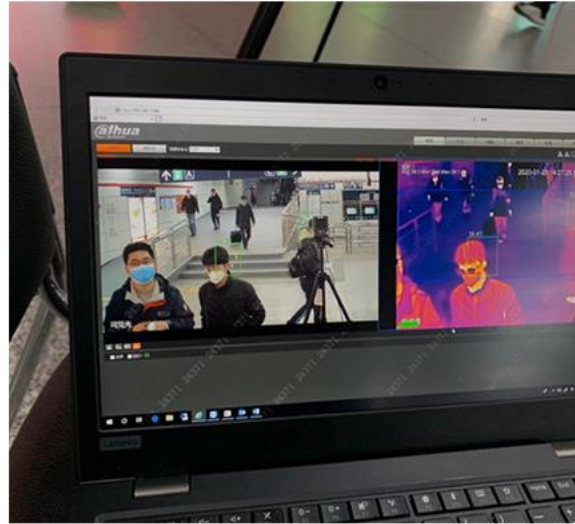


**Application Scenario :**

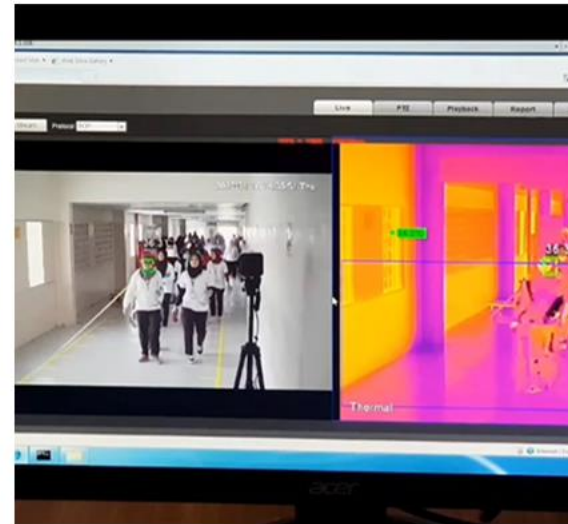


# Thermal Camera

## Successful Scenario



Stasiun Juanda Jakarta



PT. Kapal Api



Terminal 3 Bandara  
Soekarno Hatta





# Consumable Products

Wadas provides high quality media for barcode printers including custom labels, pre-printer labels, ticketing media.



Printronix Line Matrix Ribbon



Thermal Ribbon



Barcode Label



RFID Label



RFID Card



Thermal Paper



Wristband

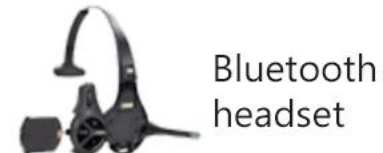


# Drive-thru Solution

A drive-through, or more commonly drive-thru (a sensational spelling of the word through), is a type of service provided by a business that allows customers to purchase products without leaving their cars.

## Our Benefits solutions for your compay :

- Platform for digital marketing and real-time promos
- Improve margins and increase sales up to 5%
- Unifies menu management on a single, digital platform
- Enhances your brand and customer experience





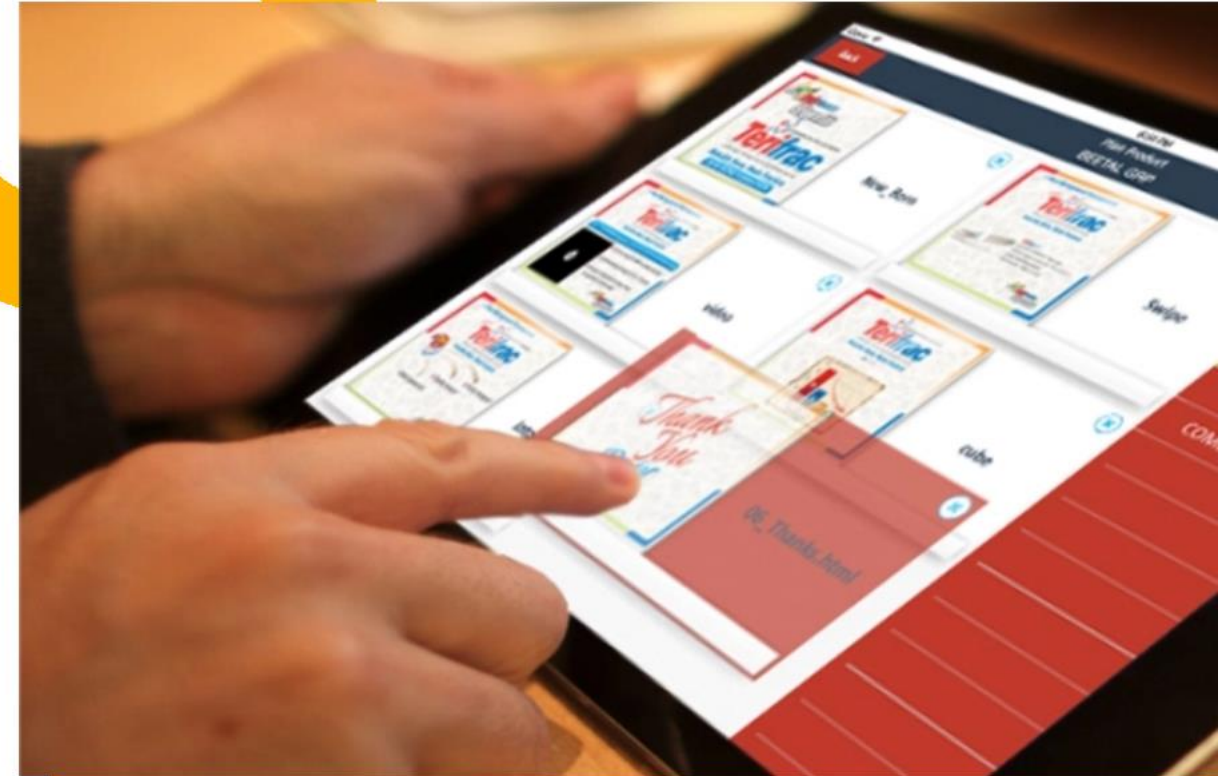


# Sales Force Automation

Sales Force Automation (SFA) is a technique of using software to automate the business takes of sales, including order processing, contact management, information sharing, inventory monitoring and control, order tracking, customer management, sales forecast, analyst and employee performance evaluation.

## Our benefit solution for your company :

- Save time and increase the value of the sales professional
- Integrated marketing, sales, and customer support activities for holistic view of customers relationship, create more accurate sales forecast based on real-time figures.
- Management can act quickly when necessary, based on real-time information.
- Our device and software complement existing enterprise management system, without compromising the productivity of your staff in serving customers.



## Our success story





# Stock Op-name System

Stock Opname is physical verification of the quantities and condition of item held in inventory or warehouse.

## Our benefit solutions for your company :

- Increase count accuracy mean less time spent tracking down of goods.
- Save paper-increasing focus on the environment and wise use of resources
- Our device and software complement existing enterprise management system, without compromising the productivity of your staff.

## Our success story



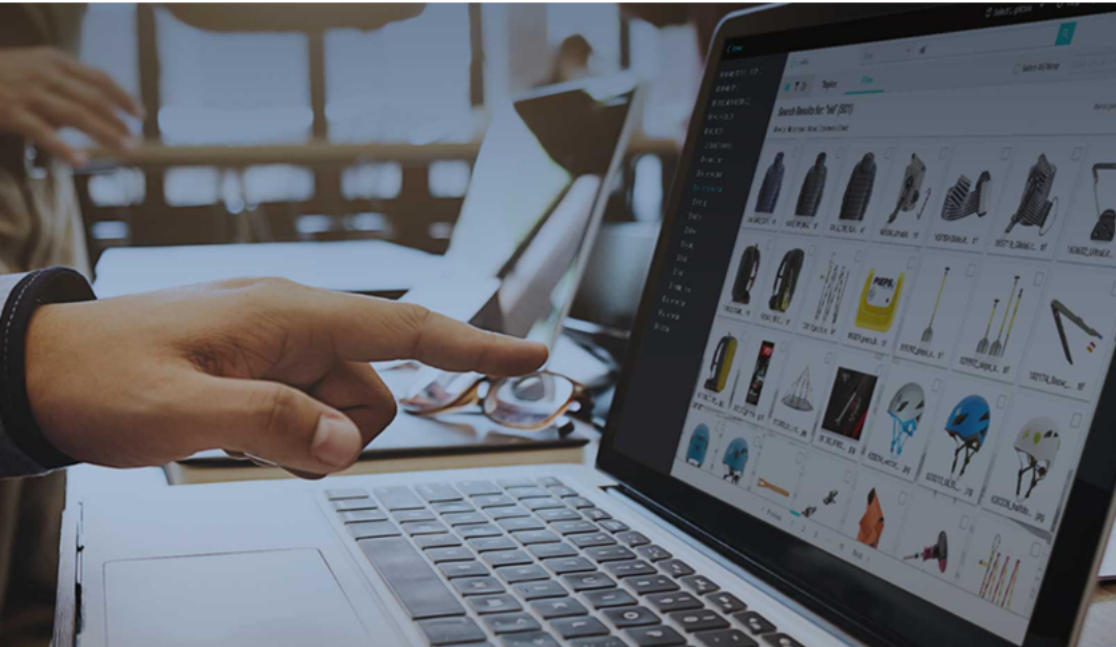


# Asset Management System

**FASTTrack**  
The Smarter Way to Track Your Asset



FASTTrack is a software application solution for managing and tracking fixed and mobile assets. It is flexible and can be easily integrated into any Financial system, Procurement system or Enterprise planning solution for immediate up-to-date access to business information



## Smart Stocktaking with Smartphone

Forget pen and paper or expensive barcode scanners. Count inventory with your smartphone/tablet. Use the same technology as the professional terminals for the price of a pencil and paper.



## Built-in 1D/2D Barcode Reader

Enter data manually or use your phone as a barcode scanner. Count inventory and fixed assets in a simple, fast and reliable way. All required tools are already in your pocket.



## Export&Import Data from Excel

If you already use some software to manage, it's a good idea to export the data from it. Most systems allow you to export inventory data or count sheets to an L or S file. If you don't have our inventory data in a system yet, application will make it very easy to register everything

## Our success story



Register Module



Labeling Module



Reporting Module



Inventory Module



Transaction Module



Barcode Module

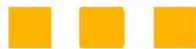


Integration Module



Maintenance Module

# Human Resources Information System



HUMANIS reduce the HR Departments contributions to the steadily growing pile of paper by allowing employees to complete and store form online.

## Ensure Greater Compliance

Help you file and retrieve documents more efficiently you can streamline the compliance process as well. Many platforms can also connect with insurance carriers and file legal documents within the system, keeping all your data in a single place.

## Boost Productivity

Helps you recruit, hire and train new employees as quickly as possible so that they can effectively fill their new roles. With better initial on boarding and continual training, you can boost employee productivity, reduce turn over and achieve greater efficiency.

## Improve Oversight

Proactively monitor compliance with routine company policy while requiring their personal attention. The system will also generate reports to demonstrate compliance, identify irregularities and pin point problems that need manager intervention.



Our success story



Payroll Transaction



Employee Administration



Attendance



Performance Management



Leave Management





BINLOC is a software or application that has a function in helping the main activities in managing warehouse

## Advantages of BINLOC

The business processes will match what is needed by the user

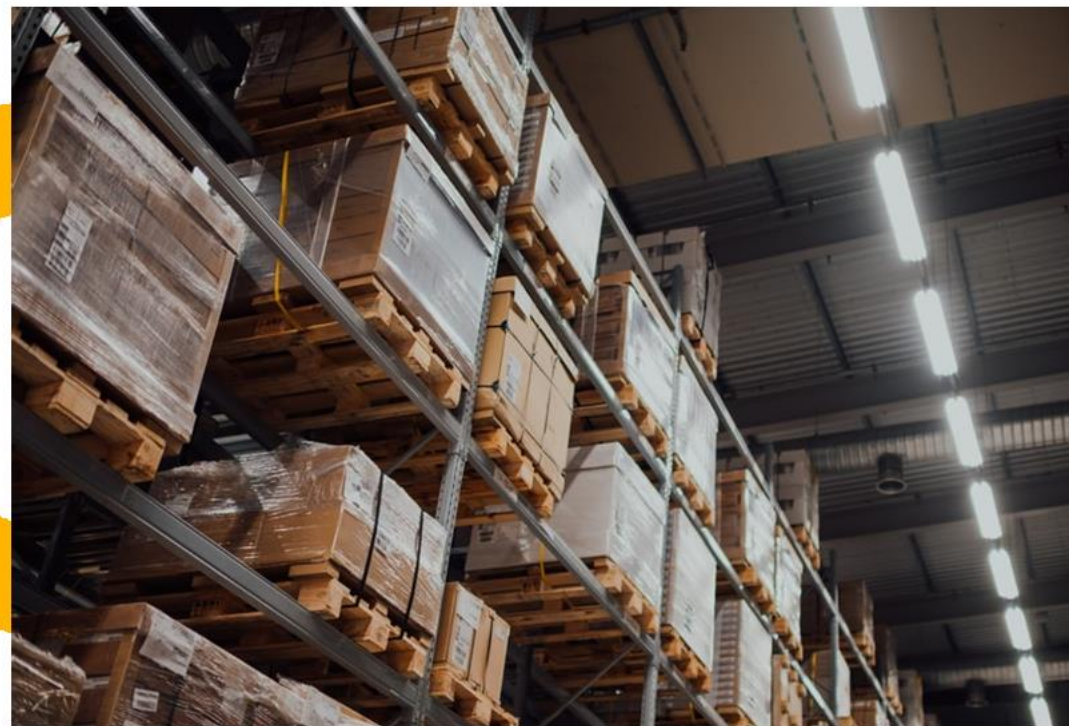
The application system will provide a complete solution because it is built based on field business processes

Easy integrate with other application, supports commonly used barcode standards (QR, Barcode, EAN13)

Can be integrated with tools such as PDT, Barcode tools and RFID



# Warehouse Management System



Our success story



# Thanks!

Do you have any question?

PT. Wahana Datarindo Sempurna  
ptwds@wadas.co.id



wadas.co.id



@wds.id



PT Wahana Datarindo Sempurna

## Contact Us

