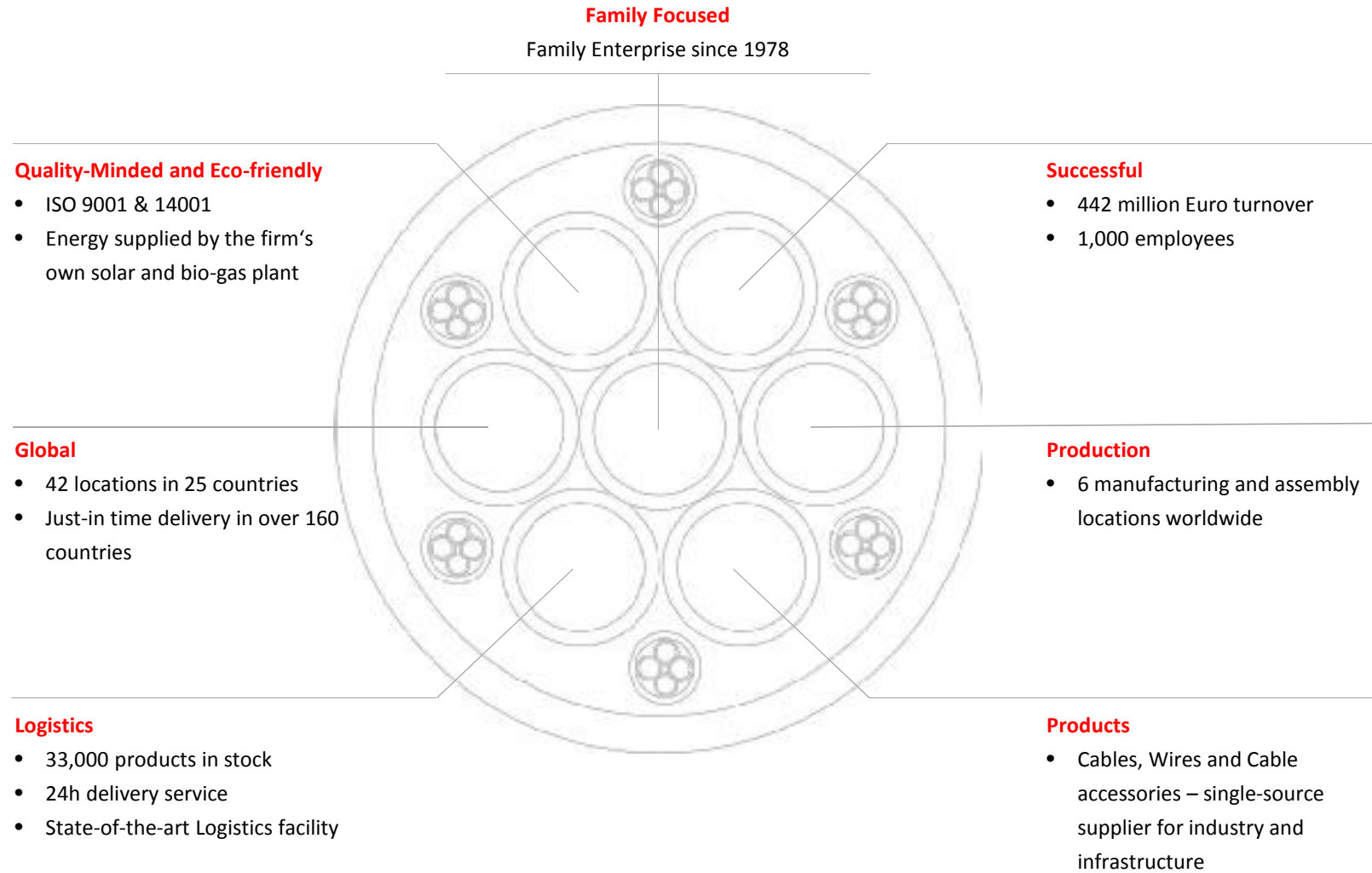




COMPANY PROFILE PT. HELUKABEL INDONESIA

■ What makes us unique!



Company

Production & Development

Logistics

Products

Services

References

■ Profile

Founded	1. April 1978
Chief Executive	Helmut Luksch, Marc Luksch, Andreas Hoppe
Sales 2014	€ 442 Mio.
Share capital	€ 5 Mio.
Headquarters	Hemmingen / Stuttgart
Branches National	Berlin · Chemnitz · Hamburg · Oberhausen · Windsbach
Branches International	Belgium · China · France · United Kingdom · India · Indonesia · Italy Canada · Malaysia · Netherlands · Austria · Poland · Russia · Sweden Switzerland · Singapore · South Africa · South Korea · Thailand · Turkey · Czech Republic · USA UAE · Vietnam
Subsidiaries and Investments	Kabelmat® Wickeltechnik GmbH (Glatten, Germany) Robotec Systems GmbH (Kamp-Lintfort, Germany) Kabelwerk Meißen Wilhelm Balzer GmbH (Meißen, Germany)
Employees	> 1.000

Company

Production & Development

Logistics

Products

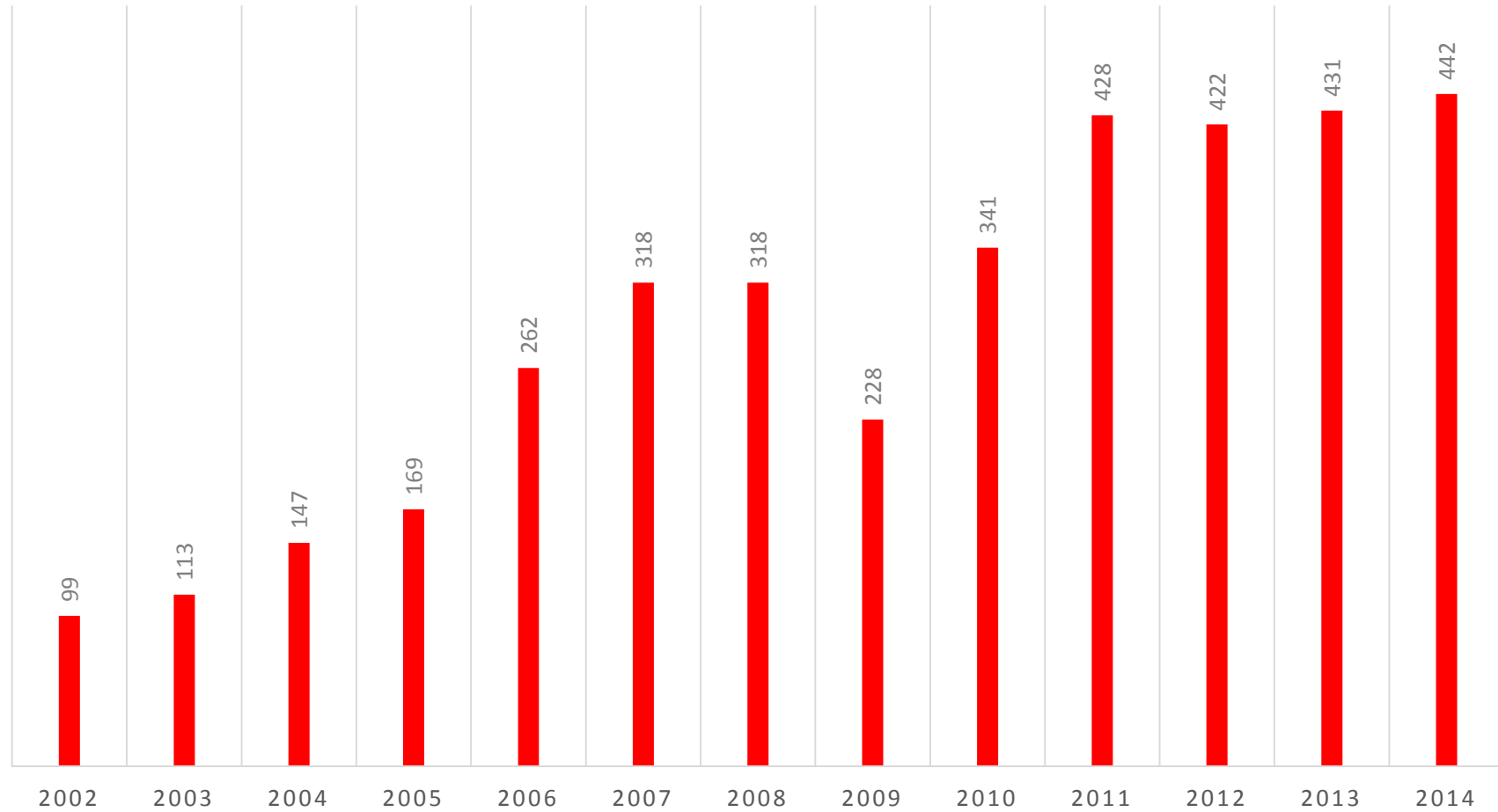
Services

References

■ History

- | | | | |
|-------------|---|-------------|---|
| 1978 | HELUKABEL® GmbH founded | 2013 | HELUKABEL® Canada, Indonesia , United Kingdom founded;
United Arab Emirates representation founded;
Opening of expanded High-Technology-Logistic-Centre at the
Headquarter in Hemmingen |
| 1980 | Nationwide Sales Force established | 2014 | HELUKABEL® Austria founded |
| 1984 | Exporting initiated | 2015 | Extension of the production facility in Windsbach / Germany |
| 1988 | Manufacturing facility opened in Windsbach / Germany | 2016 | HELUKABEL® Vietnam founded |
| 1989 | Established branches in new German States (East Germany) | | |
| 1990 | HELUKABEL® Sweden founded | | |
| 1994 | HELUKABEL® Switzerland founded | | |
| 1997 | Manufacturing capacity doubled | | |
| 1999 | HELUKABEL® France founded | | |
| 2000 | HELUKABEL® Netherlands, Poland founded | | |
| 2001 | New Logistics Centre opened | | |
| 2002 | HELUKABEL® Czech Republic, Singapore, China and South Korea founded | | |
| 2003 | HELUKABEL® Indis founded | | |
| 2005 | HELUKABEL® Turkey and Thailand founded | | |
| 2006 | HELUKABEL® Russia founded | | |
| 2007 | HELUKABEL® USA and Italy founded | | |
| 2008 | Extension of the manufacturing capacity and
HELUKABEL® Belgium founded | | |
| 2009 | Acquisition of Kabelmat® GmbH / Glatten | | |
| 2010 | HELUKABEL® South Africa and Malaysia founded | | |
| 2012 | Acquisition of Robotec Systems GmbH / Kamp-Lintfort
Majority participation of Kabelwerk Meißen Wilhelm Balzer GmbH | | |

■ Sales HELUKABEL® Groupe – in Mio. €



■ HELUKABEL® Europe

- HELUKABEL®
- Partners



HELUKABEL - Germany

Hemmingen, Berlin, Chemnitz, Oberhausen, Hamburg, Windsbach

HELUKABEL - Europe

Austria, Belgium, Czech Republic, France, Italy, Netherlands, Poland, Russia, Sweden, Switzerland, Turkey, United Kingdom

HELUKABEL - Partners

Belarus, Bulgaria, Croatia, Estonia, Estland, Finland, Greece, Hungary, Lithuania, Norway, Romania, Slovakia, Slovenia, Spain, Ukraine

Company

Production & Development

Logistics

Products

Services

References

■ HELUKABEL® Global Sites

- HELUKABEL®
- Partners



HELUKABEL - Worldwide

Austria, Belgium, Canada, China, Czech Republic, France, Germany, India, **Indonesia**, Italy, Malaysia, Netherlands, Poland, Russia, Sweden, Switzerland, Singapore, South Africa, South Korea, Thailand, Turkey,, USA, UAE, United Kingdom, Vietnam

Partner - Worldwide

Australi, Belarus, Brazil, Bulgaria, Chile, Estonia, Finland, Greece, Guatemala, Hungary, Israel, Japan, Kroatia, Lithuania, Mexico, Nigeria, Norway, Philippines, Romania, Slovakia, Slovenia, Spain, Taiwan, Ukraine

Company

Production & Development

Logistics

Products

Services

References

■ Production site Germany

In our two facilities we manufacture according to the latest production methods, and annually we produce approx. 1 million conductor kilometers (that's 77 times around the globe!). More than 300 employees are specialized in making high-quality standard and specialty cables.

Using the latest in cable technology material, and cooperating with international testing institutes, makes us an innovation leader in the areas of automation, data technology, building management systems, and renewable energy.



Our production in numbers

- 40,000 m² production facility
- 23 extruder facilities
- 19 stranding machines
- 50 braiding machines
- Cables & Wires from 0.05 to 1,000 mm²
- According to:
VDE, EAC, UL, CSA, HAR, CCC,
Germanischer Lloyd, TÜV or according to
customer specifications

**MADE IN
GERMANY**

Company

Production & Development

Logistics

Products

Services

References

■ Expansion of the production location in Windsbach

The actual construction of a further building complex, aims to concentrate the worlds research and development capacities in Windsbach as well as to establish the test facilities in the new technology centre.

Once the construction has been completed in autumn 2016 the new offices, laboratories and prodcuton areas will have a capacity of 9000 m². The investment of 20 million Euro is a clear commitment to the location of Windsbach.



Company

Production & Development

Logistics

Products

Services

References

■ Production site China

Produced for the Asian market

HELUKABEL® operates a new production facility in Taicang (near Shanghai) in China. 7,000 sqm of production space is ready to produce cables and wires for the Asian market.

Focus will be on quality flexible and highly flexible cables and wires, manufactured according to Chinese and international standards. Adjustable manufacturing cells that allow for short delivery times, and the proximity to HELUKABEL's logistics centre, offer essential advantages for executing large projects in the Asian market.



Company

Production & Development

Logistics

Products

Services

References

■ Research & Development

We develop optimised cable solutions for our customers. The main focus is on products for moving applications with a high level of vertical integration. Whether it means extreme resistance to chemicals or mechanical stress, small bending radii, high flex cycles numbers, or long lifespan, we are happy to comply with our customers' requests.

New products are tested in the state-of-the-art test center in Windsbach to ensure their suitability for daily use and readiness for standard production. Our stringent quality control standards are upheld with random sample checks carried out during production.



Out test facilities

- Test tower for wind power cables
- Drag chain test equipment
(3 m, 5 m, 6 m, 18 m and 40 m)
- Fire resistance testing equipment
- Scrape-off equipment
- Test equipment for bending and torsion requirements
- Aging ovens in accordance to UL, VDE, CSA, HAR, TÜV, CCC

■ Logistics Centre Industry

HELUKABEL® has Europe's largest and most modern distribution center for cables and wires.

The majority of the 33,000 products are stocked in the 160,000 m² storage area in Hemmingen/Stuttgart.

In our new logistics center we use state-of-the-art material handling and control technology, which enables us to pack thousands of "JIT" orders every day and ship them to customers worldwide.



Our Logistics centre in numbers

- 40,500 pallet locations
16 aisles with 16 storage and retrieval device
- 35,900 locations in small-parts store,
Capacity: 1,000 bins per hour
- 670 locations in the heavy-load storage area
with max. reels of 4,000 kg and 2.2 m ø
- 2 km conveyer section for pallets
- Conveyer connects direct to the cable-cutting machines
- Manual process reduced to merely packing
- Building: 380m length, 60m width, 24m height

Company

Production & Development

Logistics

Products

Services

References

■ Logistics Centre - Infrastructure

In Berlin, HELUKABEL® manages the central warehouse location for earth and medium voltage cables, as well as other infrastructure cables.

Our 5,000 m² indoor and 50,000 m² outdoor storage areas allows us to rapidly deliver cables from 1-30 kV to construction sites and major project locations.

Our patented heavy-duty cutting machines, which can support up to 10 tonnes in weight, are the largest of their type in Germany.



Our Berlin warehouse in numbers

- 11,000 cable drums in stock
- Mechanically processing of drums up to 2.80 m Ø and 10 t weight
- 10 drum rewinding machines
- Cable-cutting with state-of-the-art 1,200 mm² cutting tools
- 24h delivery within Germany possible

Company

Production & Development

Logistics

Products

Services

References

■ Cable, Wires & Accessories



Industrial Cables & Wires



Infrastructure Cables & Wires



Data, Network & Bus Technology



Media Technology



Custom Cables



Cable Accessories

Company

Production & Development

Logistics

Products

Services

References

■ Industrial Cables & Wires



HELUKABEL delivers cables and wires for virtually any industrial application:

- Flexible control cables
- Data and computer cables
- Heat-resistant cables
- Cables according to International Approvals
- Coaxial cables
- Flat & ribbon cables
- Motor, servo and feedback cables
- Drag chain cables
- Allweather & rubber cables
- Trailing cables
- Robot cables
- Water-resistant cables
- Single Conductors
- Compensating cables

Company

Production & Development

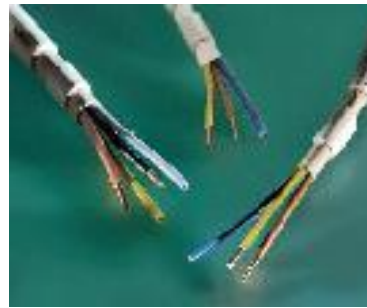
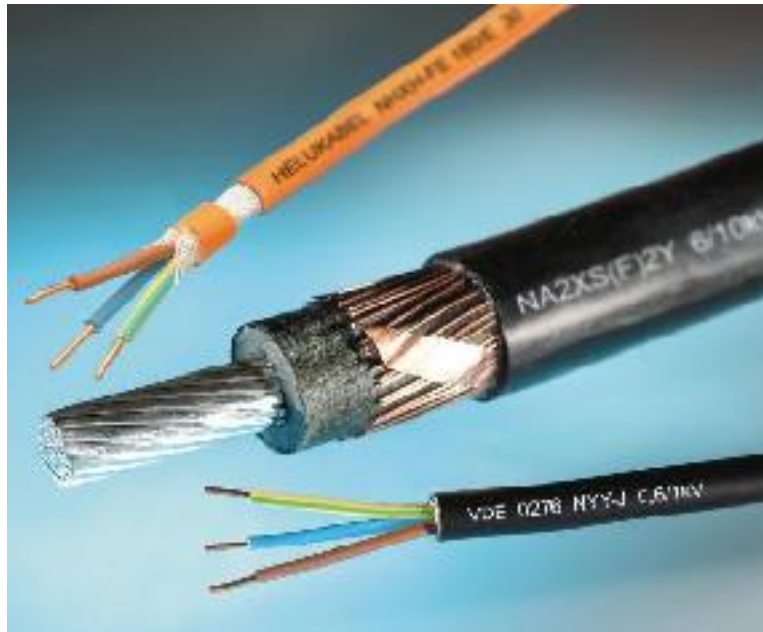
Logistics

Products

Services

References

■ Infrastructure Cables & Wires



HELUKABEL® is an international supplier of infrastructure cables and wires. We supply or domestic and international customers with power, medium-voltage and infrastructure cables from our central, Berlin-based storage warehouse.

Our standard program consists of:

- Installation cables
- Fire warning cables
- Telephone cables
- Power cables
- Security cables
- Medium-voltage cables

Company

Production & Development

Logistics

Products

Services

References

■ Data, Network & Bus Technology



HELUKABEL® offers an entire range of data, network & bus technology. We offer customer analysis, planning, cables and accessories supply, installation, commissioning and final inspection, all from one source.

Our product segments cover:

- Fibre Optic cables (GOF, HCS, POF)
- Copper Data cables (Categorie 5 to 8)
- Industrial Ethernet
- Bus Cables
- Copper Connecting Equipment (Office + Industry)
- Fibre Optic Connecting Equipment (Office + Industry)
- Network System Cabinets
- Splicing Systems and Measuring Equipment
- Active Components
- Product Training

HELUKAT®

HELUCOM®

HELUKAT®
CONNECTING SYSTEMS

HELUCOM®
CONNECTING SYSTEMS

HELUKAT®
CONNECTING SYSTEMS INDUSTRY

HELUCOM®
CONNECTING SYSTEMS INDUSTRY

Company

Production & Development

Logistics

Products

Services

References

■ Media Technology



HELULIGHT

HELUSOUND

HELUEVENT

Our cables have ensured perfect performances on Europe's leading musical and theatrical stages. They are also used in professional television, radio and studio equipment.

Our media technology product range encompasses cables for indoor and outdoor use. It guarantees high transmission quality for fixed installations or for moving applications.

Our comprehensive range of products includes:

- AES/EBU audio cables
- DMX cables
- Loudspeaker cables
- Instrument cables
- Microphone cables
- Video cables
- Connection equipment
- Special cables as per your requirements

Company

Production & Development

Logistics

Products

Services

References

■ Custom Cables



We supply cables and wires for both standard applications and customized solutions to meet customers' application-specific requirements. These include extreme conditions of usage with regard to temperature, flexing cycles, torsion or tensile stress, winding capability and chemical resistance. Wires with TÜV approval, VDE registration and UL certification have been developed for renewable energy applications. We design cables and wires to specification using various insulation and conductive materials. Different sheathing technologies, hybrid structures, conductor cross-section combinations, strain relievers from Kevlar® or steel cable, as well as round or flat steel reinforcements, are being used in numerous cables and wires already under production.

Company

Production & Development

Logistics

Products

Services

References

■ Pre-Assembled Cables



Today, more and more users are installing prefabricated and pre-assembled cables and wires. HELUKABEL® recognised this trend early on to be able to offer a complete range of pre-assembled cables and wires. Other assemblies according to custom requirements are also available.

The versatility of use, combined with multiple plug and connection types give our customers both economical and simple solutions to their problems. The easy and effective installation advantage of pre-assembled cables is enhanced by our wealth of experience.

Company

Production & Development

Logistics

Products

Services

References

■ Cable Accessories



As a significant addition to the extensive program of cables and wires, HELUKABEL® provides cable accessories according to the latest guidelines and standards.

Our cable accessories program includes:

- Cable glands
- Cable protection tube systems
- Drag and guidance chains
- Circular connectors
- Insulation and heatshrink sleeving
- Termination and connecting sleeves
- Bundling, binding and attaching
- Identification and marking
- Terminals and cable lugs
- Assembly tools

■ Kabelmat® Wickeltechnik

Kabelmat's product portfolio includes virtually every tool and machine needed to store, wind, hang and cut cables and wires, steel cables, pipes, hoses and profiles.

Kabelmat's products are in use worldwide and their capabilities include winding cable and wire from and to drums, as well as from drums to rings.



Kabelmat offers:

- Project planning and engineering
- Manufacturing and final assembly
- Manual winding systems
- Measuring systems
- Machine winding systems
- Warehouse systems
- Accessories
- Customer specific solutions
- Servicing / machine care

Company

Production & Development

Logistics

Products

Services

References



HELUKABEL

■ Robotec Systems GmbH

Robotec Systems GmbH, based in Kamp-Lintfort Germany, is one of Europe's leading companies in robotics systems. The product line includes hose packs and attachment systems, special lines for robots, pre-assembled lines, driver technology, controllers for measurement technology, as well as media systems such as air and water hoses.

From prototyping and development, to final assembly and on-site services, Robotec Systems is your trusted partner.

In July 2012, Robotec Systems GmbH became a wholly owned subsidiary of HELUKABEL GmbH.



Solution 1: Energy conduit system with R-TecBox



Solution 2: Energy conduit system with spring guide

ROBOTEC
SYSTEMS



Our services:

- Design
- Development
- Prototyping
- Documentation
- Installation/optimisation
- Repair/maintenance
- Spare parts

Company

Production & Development

Logistics

Products

Services

References

■ Quality & Environmental principles

HELUKABEL® has a high commitment to quality and the environment. For this reason the executive board has introduced an integrated management system for quality and the environment based on DIN EN ISO 9001:2008 and DIN EN ISO 14001:2009 standards.

HELUKABEL® GmbH's quality and environmental policy is oriented to meet market needs and fulfill customer requirements, as well as corporate environmental protection. Our standard is customer satisfaction and trust. Indicators of this are the economic success of the enterprise and long-standing customer relationships.



Fulfillment of our quality and environmental principles is an obligation and ongoing task of the executive board and each individual employee. Our high standards are expressed in the following criteria:

- Environment
- Employees
- Suppliers
- Conduct
- Quality
- Objectives
- Approach
- Continuous improvement

www.helukabel.com/certificates

Company

Production & Development

Logistics

Products

Services

References

■ Global Approvals

Products of HELUKABEL® comply the following approvals:

Belgium	Comité Electrotechnique Belge
China	China Compulsory Certification (CCC)
Denmark	Danmarks Elektriske Materialkontroll (DEMKO)
Germany	VDE-Prüfstelle (Verband Deutscher Elektrotechniker e.V.)
Germany	Fraunhofer Institut, Produktionstechnik und Automatisierung
Europe	Communauté Européenne
Finland	FIMKO LTD
France	Union Technique de l'Electricité
United Kingdom	BSI British Standards Institution (Zeichenvergabestelle)
Italy	IMQ Istituto Italiano de Marchio Qualità
Canada	Canadian Standards Association (CSA)
Netherlands	Naamloze Vennootschap tot Keuring van Electrotechnische Materialen (KEMA)
Norway	Norges Elektriske Materiellkontroll (NEMKO)
Austria	Österreichischer Verband für Elektrotechnik (Zeichenvergabestelle)
Russia	GOST-R Zertifizierung (SGS)
Sweden	Svenska Elektriska Materielkontrollanstalten (SEMKO)
Switzerland	Schweizerischer Elektronischer Verein (SEV)
USA	Underwriters Laboratories Inc. (UL)



Company

Production & Development

Logistics

Products

Services

References

■ References



Plant Construction

ABB, BEA, Baumüller, Cegelec, Siemens, Imtech, Actemium, Uhde, GEA-Group, Areva, Kuka, Linde, Controlmatic, Dürr, Takraf, Elpro, Alstrom

Computer Industry

IBM, HP, Motorola, Intel, NEC, Hitachi, Daewoo, LG-Electronic, Samsung, Infineon, ASML, M+W, Alcatel-Lucent

Machinery Industry

Thyssen, Krones, Homag, Schuler, Georg Fischer, Cincinnati Milacron, Mikron, DMG, Comau, Müller-Martini, WEG, MAG, Anthon, Bühler, Voith, BHS, Liebherr, Andritz, Heller, Bosch, Grob, Trumpf, Monforts, Kautex, Arburg

Automotive Industry

Daimler, BMW, Volkswagen, Ford, Opel, Fiat, Porsche, Volvo, GM, Audi, Honda, Toyota, Renault, Skoda, KIA, Hyundai, Magna, Tata

Chemical Industry

BASF, Hoechst, Bayer, Rhone Poulenc, Dynamit, Nobel, Chem. Werke Hüls, Wacker Petrochemie, Dow Chemical, Shell, BP, Sabec

Energy Industry / Wind Industry

RWE, Eon, Vattenfall, Enercon, GE Wind, Siemens, Suzlon, Acciona, Impsa, E.N.O, Vensys, Nordex, 2B Energy, Skywind, Prokon, Schütz, Impsa, Leitwind, Regen-Powertech, Senvion, Adwen, Garuda, RRB, Unison, FWT, NU Power, Alstom

Food & Beverage

Nestlé, Unilever, Danone, Coca-Cola, Pepsi, Heineken, Becks, Tsingtao, Budweiser, Big Dutchman, Guinness

Automation/Electronic/Sensors:

MURR, ESCHA, Phoenix Contact, Rockwell, Woodhead, Belden, Harting, Fanuc, Euchner, Siemens, Bosch-Indramat, Schneider Electric, SEW Eurodrive

Electrical Wholesale

Sämtliche lokale und überregionale Anbieter inkl. internationaler Partner

Steel Industry

Thyssen-Krupp, Hoogovens, BAO-Steel, Sidmar, Arbed, Eko-Stahl, Arcelor Mittal, Posco, Salzgitter, Essar-Steel

Transportation

DB, Bombardier, Stadler, Lufthansa, Airbus, Carotec, Scheuerle, KAMAG, Cavotec, Leitner, Meyer-Werft, Hyundai Heavy Industries

Weitere Referenzen finden Sie unter: www.helukabel.de/references

Company

Production & Development

Logistics

Products

Services

References

■ HELUKABEL® - What else!



Helmut Luksch,
Chief Executive Officer HELUKABEL® GmbH

Vast array of products

- 0.055 mm² to 1,000 mm²
- Multiple approvals, certificates and insulation materials
- 30,000+ products in stock

Custom cable manufacturing available

- No job is impossible
- Solutions for every application

Own Production, Research & Development Centrum

- In Germany & Far East on a production area of around 50,000 m²
- Research & Development Centrum with test tower for wind power cables, Drag chain, Fire resistance testing and Scrape-off equipment

National and international delivery

- We deliver on time from over 42 countries in 160 countries worldwide
- 24h delivery service thanks to a modern logistic concept

Dedicated Customer Service

- HELUKABEL® representatives and personalised service always within reach

Company

Production & Development

Logistics

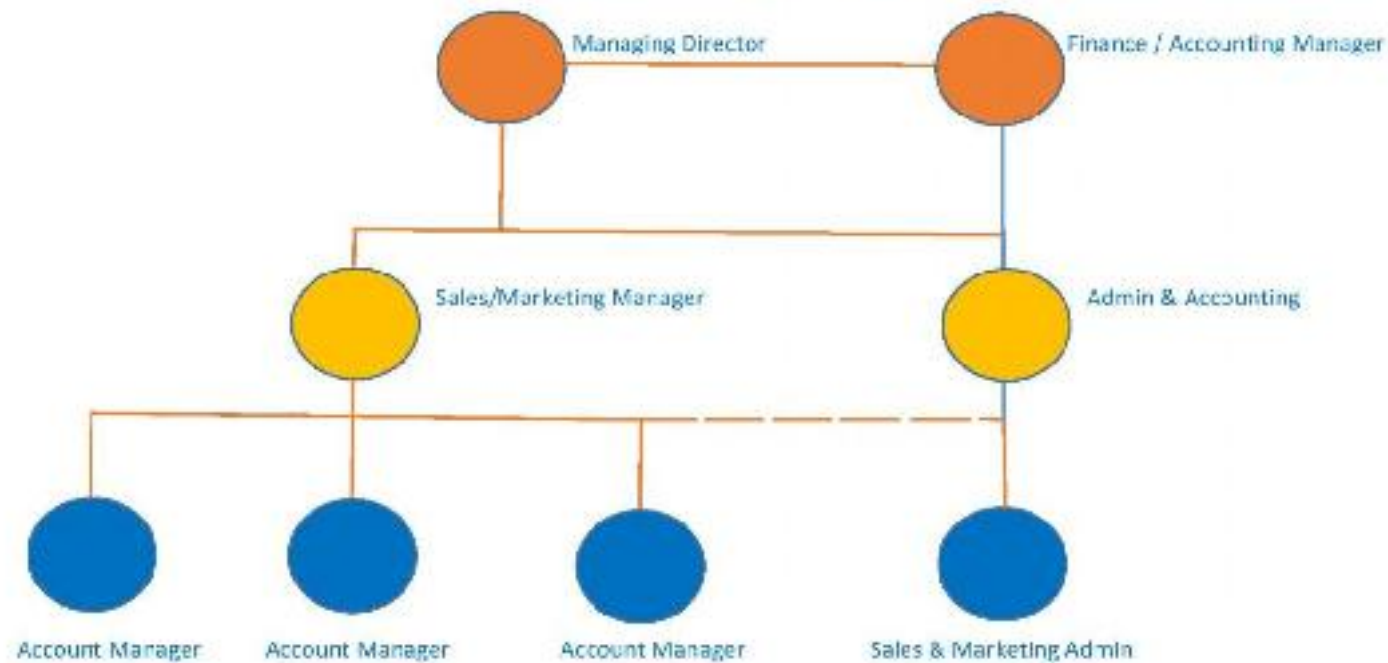
Products

Services

References

PT. HELUKABEL INDONESIA

Organizational Chart



Company

Production & Development

Logistics

Products

Services

References

EXPERIENCE LIST PT. HELUKABEL INDONESIA



No.	Project Name	Customer	User	Year
1	PASSENGER BOARDING BRIGDL	PT. BUKAKA TEKNIK UTAMA	PT. ANGKASA PURA	2013
2	UMV-RMP TOYO PROJECT	PT. SCHNEIDER ELECTRIC	PT. TOYO ENGINEERING CORP	2014
3	Polypropylene Lining Fabrics	PT. INDO KORDSA TBK	PT. INDO KORDSA TBK	2014
4	HOLCIM PROJECT at Tuban	PT. GRAMA BAZITA	PT. HOLCIM INDONESIA TBK	2014
5	BANYU URIP PROJECT	PT. MULTIPANEL INTERMITRA	PT. TRIPATRA ENGINEERING	2014
6	ELECTROLES PLATTING LINE	PT. PLASTIKATAMA TEKNOLOGI INDUSTRI	PT. SHOWA MFG INDONESIA	2014
7	BOILER project	PT. GRAND KARTECH	PT. KRAKATAU STEEL	2014
8	FLOAT DIVISION III	PT. MULIA GLASS	PT. MULIA GLASS	2014
9	NEW PRODUCTION LINE FOR KTF	PT. MEIDEN ENGINEERING INDONESIA	PT. MC PET INDONESIA	2014
10	MAINTENANCE LINE MACHINE	PT. ANUGERAH MITRA WIDITAMA	PT. SUPERNOVA FLEXIBLE PACKAGING	2014
11	PLTSU TANJUNG UNCANG BATAM	PT. ZUG INDUSTRIES INDONESIA	PT. PP TBK	2014
12	MAINTENANCE LINE MACHINE	PT. THE MASTER STEEL	PT. THE MASTER STEEL	2014
13	PUMP STATION & KARFI DRAG CHAIN	CV. CITRA AGUNG PERKASA	PT. RIKIT ASAM TBK	2014
14	INSTALASI SOLAR CELL	PT. RODA MAS	PT. RODA MAS	2014
15	AWI PROJECT CIBINONG	PT. KRONES MACHINERY INDONESIA	PT. TIRTAMAS INVESTAMA	2015
16	Tirta Investama Lihatang	PT. KRONES MACHINERY INDONESIA	PT. TIRTAMAS INVESTAMA	2015
17	Tirta Investama PADAAN	PT. KRONES MACHINERY INDONESIA	PT. TIRTAMAS INVESTAMA	2015
18	BOILER PROJECT	PT. BASUKI PRATAMA ENGINEERING	PT. CARGIL INDONESIA	2015
19	PROJECT HYBRID SYSTEM	PT. HARRIF JAYA MANUNGAL	PT. AIRNAV INDONESIA	2016
20	BOILER PROJECT	PT. GRAND KARTECH	PT. SMELTING GRESIK	2016
21	HOLCIM PROJECT at Tuban	PT. GRAMA BAZITA	PT. HOLCIM INDONESIA TBK	2016
22	MEKARSARI PLANT PROJECT	PT. KRONES MACHINERY INDONESIA	PT. AGRIA GOLDEN MISSISSIPPI	2016
23	MATINDOK PROJECT	PT. MULTIPANEL INTERMITRA	PETAMINA LP	2016
24	BLAST FURNACE PROJECT	PT. KRATAU ENGINEERING	PT. KRATAU STEEL TBK	2016

Company

Production & Development

Logistics

Products

Services

References





Company

Production & Development

Logistics

Products

Services

References

PEMERINTAH PROVINSI DKI JAKARTA
DINAS KOPERASI, USAHA MIKRO, KECIL, DAN
MENENGAH, DAN PERDAGANGAN

TANDA DAFTAR PERUSAHAAN
PERSERIKAN TERBATAS

BERASABAH BERKAS BERKAS REPUBLIK INDONESIA NOMOR 1 TAHUN 1982 TENTANG NAMA DAFTAR PERUSAHAAN

KODE NPS 09.05.1.46.79873	BERKAS NPS TERIMA 17 OKT 2016	REDAKSI SIK
NAMA PERUSAHAAN HELUKABEL INDONESIA, PT		
JENIS PERUSAHAAN PT (Perseroan Terbatas)		
PEMILAH PERUSAHAAN IRMAN SUSANTO		
ALAMAT PERUSAHAAN JL. KYNICARIMON NO. 2931, LAHARTA PLASAT		
KODE PERUSAHAAN 02.632.012.6.028.000		
KODE TRUKA 021-2848972-73		
KODE TRUKA 021-2848972-73		
KODE TRUKA 021-2848972-73		

JAKARTA, 17 OKTOBER 2016
 KEPALA SUKSES DINAS KOPERASI, USAHA MIKRO, KECIL, DAN
 MENENGAH, DAN PERDAGANGAN
 KOTA ADMINISTRASI JAKARTA PUSAT
 DR. SUGENG WIDODO, M.P.
 N.P. 0602001180301013

Perhatian:

1. Tanda Daftar Perusahaan yang dipaparkan adalah yang mudah dilihat oleh umum.
2. Menteri, Kepala Kantor, dan pejabat yang ditunjuk pada departemen perusahaan dan perusahaan lainnya yang dipaparkan dan tidak terdapat.
3. Apabila Tanda Daftar Perusahaan yang atau tidak, yang dipaparkan perusahaan, tidak terdapat, akan Perusahaan Perusahaan untuk memperpanjang penggantian dalam waktu 3 (tiga) bulan setelah berakhirnya atau tidak.
4. Tanda Daftar Perusahaan yang atau tidak yang dipaparkan pada tanda Daftar Perusahaan Perusahaan yang dipaparkan, tidak terdapat, dalam waktu 3 (tiga) bulan setelah berakhirnya atau tidak.
5. Tanda Daftar Perusahaan yang atau tidak yang dipaparkan pada tanda Daftar Perusahaan Perusahaan yang dipaparkan, tidak terdapat, dalam waktu 3 (tiga) bulan setelah berakhirnya atau tidak.

REKAMER PERUSAHAAN

1. Tanda Daftar Perusahaan yang dipaparkan pada tanda Daftar Perusahaan Perusahaan yang dipaparkan, tidak terdapat, dalam waktu 3 (tiga) bulan setelah berakhirnya atau tidak.
2. Tanda Daftar Perusahaan yang dipaparkan pada tanda Daftar Perusahaan Perusahaan yang dipaparkan, tidak terdapat, dalam waktu 3 (tiga) bulan setelah berakhirnya atau tidak.
3. Tanda Daftar Perusahaan yang dipaparkan pada tanda Daftar Perusahaan Perusahaan yang dipaparkan, tidak terdapat, dalam waktu 3 (tiga) bulan setelah berakhirnya atau tidak.

REKAMER PERUSAHAAN

1. Tanda Daftar Perusahaan yang dipaparkan pada tanda Daftar Perusahaan Perusahaan yang dipaparkan, tidak terdapat, dalam waktu 3 (tiga) bulan setelah berakhirnya atau tidak.
2. Tanda Daftar Perusahaan yang dipaparkan pada tanda Daftar Perusahaan Perusahaan yang dipaparkan, tidak terdapat, dalam waktu 3 (tiga) bulan setelah berakhirnya atau tidak.
3. Tanda Daftar Perusahaan yang dipaparkan pada tanda Daftar Perusahaan Perusahaan yang dipaparkan, tidak terdapat, dalam waktu 3 (tiga) bulan setelah berakhirnya atau tidak.

Company

Production & Development

Logistics

Products

Services

References



DAFTAR PUSTAKA

[illegible]

- © 2006 The Authors
Journal compilation © 2006 Blackwell Publishing Ltd



3. Electing your trustee

KETERANGAN	PROSES	TUGAS
1. Materi Pembelajaran		
a. Materi Pokok/Pada	1. Bayan Gajah Pk. 51a Mening	Waktu Pokok : 4 Maka 7.5 : 21.00 Lampiran No. 28-21, Gc. Pk. 51a, 51b, 51c, Gc. 51d, 51e, 51f, Gc. 51g, 51h, 51i, Gc. 51j, 51k, 51l, Gc. 51m, 51n, 51o, Gc. 51p, 51q, 51r, Gc. 51s, 51t, 51u, Gc. 51v, 51w, 51x, Gc. 51y, 51z, 51aa, Gc. 51ab, 51ac, 51ad, Gc. 51ae, 51af, 51ag, Gc. 51ah, 51ai, 51aj, Gc. 51ak, 51al, 51am, Gc. 51an, 51ao, 51ap, Gc. 51aq, 51ar, 51as, Gc. 51at, 51au, 51av, Gc. 51aw, 51ax, 51ay, Gc. 51az, 51ba, 51bb, Gc. 51bc, 51bd, 51be, Gc. 51bf, 51bg, 51bh, Gc. 51bi, 51bj, 51bk, Gc. 51bl, 51bm, 51bn, Gc. 51bo, 51bp, 51bq, Gc. 51br, 51bs, 51bt, Gc. 51bu, 51bv, 51bw, Gc. 51bx, 51by, 51bz, Gc. 51ca, 51cb, 51cc, Gc. 51cd, 51ce, 51cf, Gc. 51cg, 51ch, 51ci, Gc. 51cj, 51ck, 51cl, Gc. 51cm, 51cn, 51co, Gc. 51cp, 51cq, 51cr, Gc. 51cs, 51ct, 51cu, Gc. 51cv, 51cw, 51cx, Gc. 51cy, 51cz, 51da, Gc. 51db, 51dc, 51dd, Gc. 51de, 51df, 51dg, Gc. 51dh, 51di, 51dj, Gc. 51dk, 51dl, 51dm, Gc. 51dn, 51do, 51dp, Gc. 51dq, 51dr, 51ds, Gc. 51dt, 51du, 51dv, Gc. 51dw, 51dx, 51dy, Gc. 51dz, 51ea, 51eb, Gc. 51ec, 51ed, 51ee, Gc. 51ef, 51eg, 51eh, Gc. 51ei, 51ej, 51ek, Gc. 51el, 51em, 51en, Gc. 51eo, 51ep, 51eq, Gc. 51er, 51es, 51et, Gc. 51eu, 51ev, 51ew, Gc. 51ex, 51ey, 51ez, Gc. 51fa, 51fb, 51fc, Gc. 51fd, 51fe, 51ff, Gc. 51fg, 51fh, 51fi, Gc. 51fj, 51fk, 51fl, Gc. 51fm, 51fn, 51fo, Gc. 51fp, 51fq, 51fr, Gc. 51fs, 51ft, 51fu, Gc. 51fv, 51fw, 51fx, Gc. 51fy, 51fz, 51ga, Gc. 51gb, 51gc, 51gd, Gc. 51ge, 51gf, 51gg, Gc. 51gh, 51gi, 51gj, Gc. 51gk, 51gl, 51gm, Gc. 51gn, 51go, 51gp, Gc. 51gq, 51gr, 51gs, Gc. 51gt, 51gu, 51gv, Gc. 51gw, 51gx, 51gy, Gc. 51gz, 51ha, 51hb, Gc. 51hc, 51hd, 51he, Gc. 51hf, 51hg, 51hh, Gc. 51hi, 51hj, 51hk, Gc. 51hl, 51hm, 51hn, Gc. 51ho, 51hp, 51hq, Gc. 51hr, 51hs, 51ht, Gc. 51hu, 51hv, 51hw, Gc. 51hx, 51hy, 51hz, Gc. 51ia, 51ib, 51ic, Gc. 51id, 51ie, 51if, Gc. 51ig, 51ih, 51ii, Gc. 51ij, 51ik, 51il, Gc. 51im, 51in, 51io, Gc. 51ip, 51iq, 51ir, Gc. 51is, 51it, 51iu, Gc. 51iv, 51iw, 51ix, Gc. 51iy, 51iz, 51ja, Gc. 51jb, 51jc, 51jd, Gc. 51je, 51jf, 51jg, Gc. 51jh, 51ji, 51jj, Gc. 51jk, 51jl, 51jm, Gc. 51jn, 51jo, 51jp, Gc. 51jq, 51jr, 51js, Gc. 51jt, 51ju, 51jv, Gc. 51jw, 51jx, 51jy, Gc. 51jz, 51ka, 51kb, Gc. 51kc, 51kd, 51ke, Gc. 51kf, 51kg, 51kh, Gc. 51ki, 51kj, 51kk, Gc. 51kl, 51km, 51kn, Gc. 51ko, 51kp, 51kq, Gc. 51kr, 51ks, 51kt, Gc. 51ku, 51kv, 51kw, Gc. 51kx, 51ky, 51kz, Gc. 51la, 51lb, 51lc, Gc. 51ld, 51le, 51lf, Gc. 51lg, 51lh, 51li, Gc. 51lj, 51lk, 51ll, Gc. 51lm, 51ln, 51lo, Gc. 51lp, 51lq, 51lr, Gc. 51ls, 51lt, 51lu, Gc. 51lv, 51lw, 51lx, Gc. 51ly, 51lz, 51ma, Gc. 51mb, 51mc, 51md, Gc. 51me, 51mf, 51mg, Gc. 51mh, 51mi, 51mj, Gc. 51mk, 51ml, 51mm, Gc. 51mn, 51mo, 51mp, Gc. 51mq, 51mr, 51ms, Gc. 51mt, 51mu, 51mv, Gc. 51mw, 51mx, 51my, Gc. 51mz, 51na, 51nb, Gc. 51nc, 51nd, 51ne, Gc. 51nf, 51ng, 51nh, Gc. 51ni, 51nj, 51nk, Gc. 51nl, 51nm, 51nn, Gc. 51no, 51np, 51nq, Gc. 51nr, 51ns, 51nt, Gc. 51nu, 51nv, 51nw, Gc. 51nx, 51ny, 51nz, Gc. 51oa, 51ob, 51oc, Gc. 51od, 51oe, 51of, Gc. 51og, 51oh, 51oi, Gc. 51oj, 51ok, 51ol, Gc. 51om, 51on, 51oo, Gc. 51op, 51oq, 51or, Gc. 51os, 51ot, 51ou, Gc. 51ov, 51ow, 51ox, Gc. 51oy, 51oz, 51pa, Gc. 51pb, 51pc, 51pd, Gc. 51pe, 51pf, 51pg, Gc. 51ph, 51pi, 51pj, Gc. 51pk, 51pl, 51pm, Gc. 51pn, 51po, 51pp, Gc. 51pq, 51pr, 51ps, Gc. 51pt, 51pu, 51pv, Gc. 51pw, 51px, 51py, Gc. 51pz, 51qa, 51qb, Gc. 51qc, 51qd, 51qe, Gc. 51qf, 51qg, 51qh, Gc. 51qi, 51qj, 51qk, Gc. 51ql, 51qm, 51qn, Gc. 51qo, 51qp, 51qq, Gc. 51qr, 51qs, 51qt, Gc. 51qu, 51qv, 51qw, Gc. 51qx, 51qy, 51qz, Gc. 51ra, 51rb, 51rc, Gc. 51rd, 51re, 51rf, Gc. 51rg, 51rh, 51ri, Gc. 51rj, 51rk, 51rl, Gc. 51rm, 51rn, 51ro, Gc. 51rp, 51rq, 51rr, Gc. 51rs, 51rt, 51ru, Gc. 51rv, 51rw, 51rx, Gc. 51ry, 51rz, 51sa, Gc. 51sb, 51sc, 51sd, Gc. 51se, 51sf, 51sg, Gc. 51sh, 51si, 51sj, Gc. 51sk, 51sl, 51sm, Gc. 51sn, 51so, 51sp, Gc. 51sq, 51sr, 51ss, Gc. 51st, 51su, 51sv, Gc. 51sw, 51sx, 51sy, Gc. 51sz, 51ta, 51tb, Gc. 51tc, 51td, 51te, Gc. 51tf, 51tg, 51th, Gc. 51ti, 51tj, 51tk, Gc. 51tl, 51tm, 51tn, Gc. 51to, 51tp, 51tq, Gc. 51tr, 51ts, 51tt, Gc. 51tu, 51tv, 51tw, Gc. 51tx, 51ty, 51tz, 51ua, Gc. 51ub, 51uc, 51ud, Gc. 51ue, 51uf, 51ug, Gc. 51uh, 51ui, 51uj, Gc. 51uk, 51ul, 51um, Gc. 51un, 51uo, 51up, Gc. 51uq, 51ur, 51us, Gc. 51ut, 51uu, 51uv, Gc. 51uw, 51ux, 51uy, Gc. 51uz, 51va, 51vb, Gc. 51vc, 51vd, 51ve, Gc. 51vf, 51vg, 51vh, Gc. 51vi, 51vj, 51vk, Gc. 51vl, 51vm, 51vn, Gc. 51vo, 51vp, 51v

LAWYER LAIN.

1. [Tjallingii, 1988](#) *Penelitian Pengaruh Struktur, Desain dan Kondisi Perumahan Terhadap Kualitas Lingkungan Hidup*. Laporan Penelitian, Departemen Teknik Sipil, Universitas Indonesia.
2. [Sugeng, 1998](#) *Penelitian Pengaruh Struktur, Desain dan Kondisi Perumahan Terhadap Kualitas Lingkungan Hidup*. Laporan Penelitian, Departemen Teknik Sipil, Universitas Indonesia.
3. [Sugeng, 1998](#) *Penelitian Pengaruh Struktur, Desain dan Kondisi Perumahan Terhadap Kualitas Lingkungan Hidup*. Laporan Penelitian, Departemen Teknik Sipil, Universitas Indonesia.
4. [Sugeng, 1998](#) *Penelitian Pengaruh Struktur, Desain dan Kondisi Perumahan Terhadap Kualitas Lingkungan Hidup*. Laporan Penelitian, Departemen Teknik Sipil, Universitas Indonesia.
5. [Sugeng, 1998](#) *Penelitian Pengaruh Struktur, Desain dan Kondisi Perumahan Terhadap Kualitas Lingkungan Hidup*. Laporan Penelitian, Departemen Teknik Sipil, Universitas Indonesia.
6. [Sugeng, 1998](#) *Penelitian Pengaruh Struktur, Desain dan Kondisi Perumahan Terhadap Kualitas Lingkungan Hidup*. Laporan Penelitian, Departemen Teknik Sipil, Universitas Indonesia.
7. [Sugeng, 1998](#) *Penelitian Pengaruh Struktur, Desain dan Kondisi Perumahan Terhadap Kualitas Lingkungan Hidup*. Laporan Penelitian, Departemen Teknik Sipil, Universitas Indonesia.
8. [Sugeng, 1998](#) *Penelitian Pengaruh Struktur, Desain dan Kondisi Perumahan Terhadap Kualitas Lingkungan Hidup*. Laporan Penelitian, Departemen Teknik Sipil, Universitas Indonesia.
9. [Sugeng, 1998](#) *Penelitian Pengaruh Struktur, Desain dan Kondisi Perumahan Terhadap Kualitas Lingkungan Hidup*. Laporan Penelitian, Departemen Teknik Sipil, Universitas Indonesia.
10. [Sugeng, 1998](#) *Penelitian Pengaruh Struktur, Desain dan Kondisi Perumahan Terhadap Kualitas Lingkungan Hidup*. Laporan Penelitian, Departemen Teknik Sipil, Universitas Indonesia.

Jumlah: 67 OCT 2013



Free 30 days of use available for trial.

doi:10.1017/S0022292410000507

— **What are the symptoms?**

© 2018, PT. BINA SARANA INDOnesia / 2018-01-20-24-2018

©HELUKABEL GmbH 2016 | V2.0, 04.02.2016



What can we do for you?

We will be pleased to assist you!