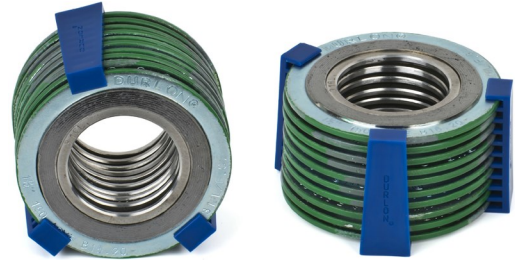


DURLON® SWG

Spiral Wound Gaskets

Durlon® Spiral Wound Gaskets (SWG) are made with an alternating combination of a preformed engineered metal strip and a more compressible filler material which creates an excellent seal when compressed. The engineered shape of the metal strip acts as a spring under load, resulting in a very resilient seal under varying conditions. The strip metallurgy and filler material can be selected to seal a wide range of applications. All Durlon® SWG styles have been engineered to precise manufacturing tolerances that allow for lower stress (bolt load) sealing compared to conventional spiral wound gaskets. All Durlon® SWGs are manufactured according to ASME B16.20 standards. Quality Assurance complies with API Specifications Q1 and ISO 9001 standards.

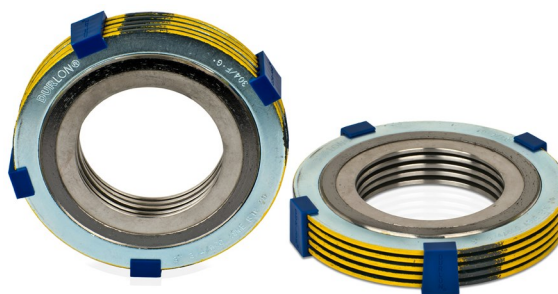
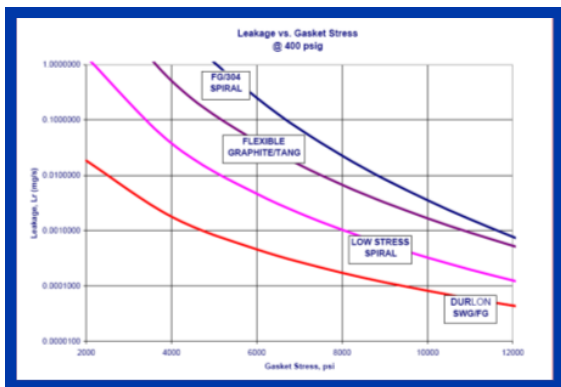


| | | |
|------------------|--|--|
| Style D | <ul style="list-style-type: none">Sealing element only consisting of preformed engineered metal and more compressible filler materialCommonly used in tongue and groove or male and female flangesCan also be supplied with an inner ring as Style DI | |
| Style DR | <ul style="list-style-type: none">Sealing element (D) combined with a centering ring (R) which reinforces the gasket and acts as a compression stopCommonly used with standard raised face and full face type flangesCentering ring is electroplated which provides superior corrosion resistance compared to powder or liquid coating | |
| Style DRI | <ul style="list-style-type: none">Sealing element (D) combined with a centering ring (R) and an inner ring (I) which improves radial strength and protects the sealing element from erosion and inward buckingCommonly used with standard raised face and full face type flangesInner rings are recommended for all spiral wound gaskets but are mandatory (ASME B16.20-2007) for all PTFE filled gaskets, NSP 24" and larger Class 900, NSP 12", larger Class 1500 and NPS 4" and larger Class 2500 | |



Advantages:

Durlon® SWGs obtain their initial seal with very low seating stresses and provide a tighter seal than typical low stress spiral wound gaskets and other high temperature alternative gaskets. Our advanced manufacturing process allows all Durlon® SWGs to perform better under low bolt stress applications while maintaining seal integrity under normal spiral wound gasket conditions.



Colour Coding Guidelines for Spiral Wound Gaskets

Durlon® Style DR and DRI gasket centering rings (in carbon steel) are coated to provide protection against corrosion.

Durlon® Spiral Wounds are packaged with the utmost care to prevent damage during shipping to the job site.

| m & Y Factors | m | Y, psi |
|--|-----|--------|
| Type D, DR & DRI, Graphite, Graphite/Mica & PTFE | 2.8 | 6,500 |

| ROTT FACTORS | G _b , psi | a | G _v , psi |
|-------------------------------|----------------------|-------|----------------------|
| Type D, DR, DRI-Graphite | 86 | 0.594 | 0.1 |
| Type D, DR, DRI-Graphite/Mica | 90 | 0.590 | 0.1 |
| Type D, DR, DRI-PTFE | 173 | 0.405 | 1.0 |

| Metalurgy | | | | | Guide Ring Color Code* | |
|----------------------|---------|------|----------------|-----|------------------------|-----------|
| | Minimum | | Maximum | | | |
| Material | °F | °C | °F | °C | Abbreviation | |
| 304 Stainless Steel | -320 | -195 | 1,400 | 760 | 304 | Yellow |
| 316L Stainless Steel | -150 | -100 | 1,400 | 760 | 316L | Green |
| 317L Stainless Steel | -150 | -100 | 1,400 | 760 | 317L | Maroon |
| 321 Stainless Steel | -320 | -195 | 1,400 | 760 | 321 | Turquoise |
| 347 Stainless Steel | -320 | -195 | 1,700 | 925 | 347 | Blue |
| Carbon Steel | -40 | -40 | 1,000 | 540 | CRS | Silver |
| 20Cb-3 (Alloy 20) | -300 | -185 | 1,400 | 760 | A-20 | Black |
| HASTELLOY® B 2 | -300 | -185 | 2,000 1,090 | | HAST B | Brown |
| HASTELLOY® C 276 | -300 | -185 | 2,000 1,090 | | HAST C | Beige |
| INCOLOY® 800 | -150 | -100 | 1,600 | 870 | IN 800 | White |
| INCOLOY® 825 | -150 | -100 | 1,600 | 870 | IN 825 | White |
| INCONEL® 600 | -150 | -100 | 2,000 1,090 | | INC 600 | Gold |
| INCONEL® 625 | -150 | -100 | 2,000 1,090 | | INC 625 | Gold |
| INCONEL® X750 | -150 | -100 | 2,000 1,090 | | INX | NO COLOR |
| MONEL® 400 | -200 | -130 | 1,500 | 820 | MON | Orange |
| Nickel 200 | -320 | -195 | 1,400 | 760 | NI | Red |
| Titanium | -320 | -195 | 2,000 1,090 | | TI | Purple |

| Filler Materials | | | | | | Stripe Color Code* |
|-------------------|---------|------|---------|-------|--------------|--------------------|
| | Minimum | | Maximum | | | |
| Material | °F | °C | °F | °C | Abbreviation | |
| Ceramic | -350 | -212 | 2,000 | 1,090 | CER | Light Green |
| Flexible Graphite | -350 | -212 | 950 | 510 | F.G. | Gray |
| PTFE | -400 | -240 | 500 | 260 | PTFE | White |
| Mica Graphite | -350 | -212 | 1,400 | 760 | MICA-GRA | Pink |



Download iGasket® on your smartphone today!

® A registered trademark of Triangle Fluid Controls Ltd.

Durlon SWG REV 2013-2

t - 613.968.1100
f - 613.968.1099
tf - 866.537.1133



Triangle Fluid Controls Ltd.®
Belleville, ON
CANADA

info@trianglefluid.com
www.trianglefluid.com