

DRY BULK CONTAINER LINER INSTALLATION

1. CONTAINER SELECTION

Select a 20" Standard container, 8'6"high, with a gross weight rating of 30480 Kg or higher, 5 years of age or less(Check data plate).

1) External inspection

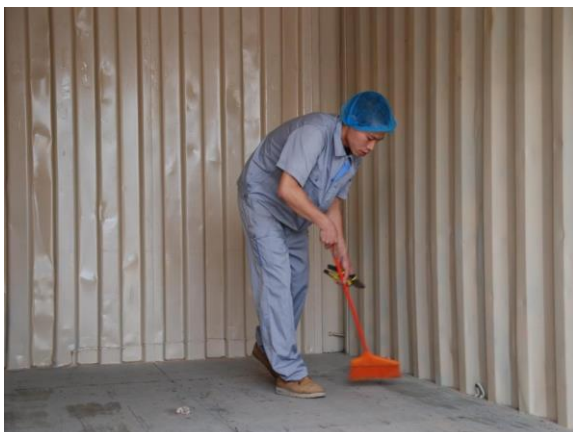
A container should be inspected inside and outside before it is packed with cargo, if there is evidence that the container is weakened, it should not be used. Walls, Floor and roof should be in good condition and not significantly distorted, Doors should work properly and be capable of being securely locked and sealed in the closed position. Door gaskets and weather strips should be in good condition. A container should bear a current international convention for Safe Containers(CSC) Safety Approval Plate. The container must not have Decal or maker panels.

2) Internal inspection

A container shall be weatherproof, previous patches and repairs should be carefully checked for possible leakage. A container should be free from major damage, with no broken flooring or protrusions such as nail, bolts, glass, sharp edges, special fittings, etc. which could cause injury to persons or damage the flexitank. A container should be clean, dry and free of residues and persistent odors from previous cargo.

2. DRY BULK CONTAINER LINER INSTALLATION

1 Carefully sweep the floor and check by eye and hand for any rough edges, projections, splinters, screw heads or weld patches. Heavy duty tape should be used to cover and protect potential trouble spots.



G + L (S) Pte.Ltd - Woodlands Close # 03-27 Primz Biz Hub Singapore

2 Laying the Liner on the container, Unfold liner forwards and backwards.



3 Set up the steel bar to the front sleeve horizontally into the container's trough



4 Fixation Hanging Point, Start from the front, as the operating mode to fix all the hanging points.



G + L (S) Pte.Ltd - Woodlands Close # 03-27 Primz Biz Hub Singapore

5 Install the exclusive belts(2pcs).



6 From the bulkhead sleeve fit with the first steel bar.



7 The remaining 3pcs steel bar fixated well, adjust the position well make the bottom steel bar cannot block the discharge spout.



G + L (S) Pte.Ltd - Woodlands Close # 03-27 Primz Biz Hub Singapore

8 Adjust the steel bar and the bulkhead well, fasten the steel bar well to prevent slippage.



9 Closed the left door, to start filling products.

