



PT. INDO TEKNIK GEMILANG

COMPANY PROFILE 2024

PT. Indo Teknik Gemilang is an Indonesia-based company with a skilled team specializing in industrial products for petrochemical and general industries. We are also focusing on the sustainable energy sector, aligning with the global Paris 2050 targets to support the transition to a low-carbon economy.

MORE INFO

www.ptitg.co.id

EMAIL US

info@ptitg.co.id



HI

THERE

PT. Indo Teknik Gemilang provides a wide range of high-performance pumps designed for various industrial applications. **Teikoku Canned Motor Pumps**, known for their leak-free design and reliability in high-temperature and hazardous environments. These pumps are perfect for industries like chemical processing and petrochemicals, ensuring safety and minimal maintenance.

Furthermore, our offerings include **diaphragm pumps** for precise fluid handling.

We also supply a variety of **valves**, including control valves, ball valves, butterfly valves, and gate valves, all designed for optimal flow control and durability in demanding conditions. Each valve is sourced from reputable manufacturers to guarantee reliable performance.

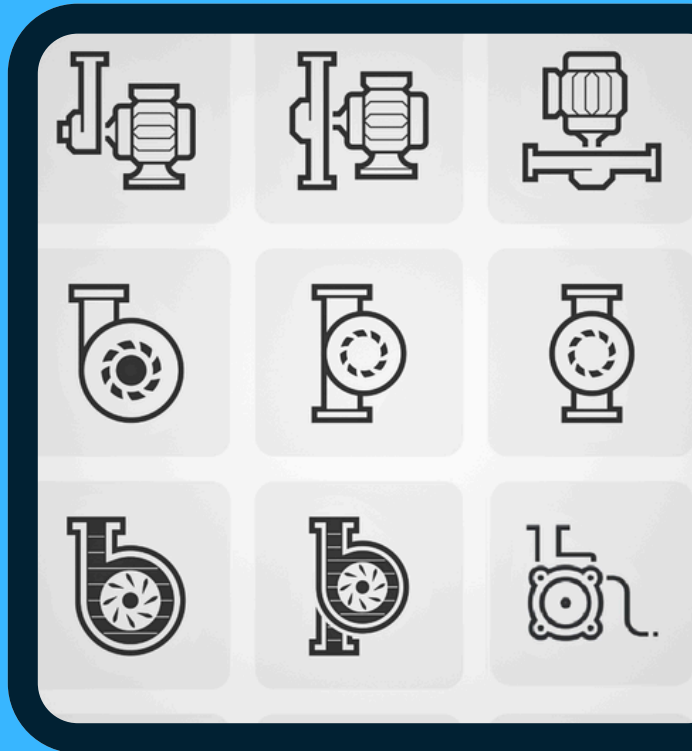
Additionally, we specialize in **top-entry mixers** and custom agitators tailored to meet specific application needs. Our mixers are designed for effective mixing and blending, making them suitable for various industries, including pharmaceuticals and wastewater treatment.

At PT. Indo Teknik Gemilang, we are dedicated to providing quality products that meet the unique needs of our clients, ensuring reliability and efficiency in every application.



SALES PRODUCT

PUMPS



TEIKOKU CANNED MOTOR PUMP

Type FV Standard Design

Chemical service pumps suitable for various non-slurry liquids, available in 304 SS, 316 SS, and other high-grade alloys. Optional heating or cooling jackets are offered for both motor and pump, as well as explosion-proof motor options.

Standard performance range:

Qmax	: 3430 gpm	13m ³ /min
TDH Max	: 530 ft	160 m
kW Max	: 295 HP	220 kW



Type R Reverse Circulation

Designed for self-venting and low NPSHr, ideal for volatile liquids, liquefied gases, and refrigerants including ammonia, synthetic fluorocarbons, and chlorocarbons. Available in horizontal and vertical models, supporting a wide temperature range from extremely low to high.

Qmax	: 3430 gpm	13m ³ /min
TDH Max	: 530 ft	160 m
kW Max	: 295 HP	220 kW



CANNED MOTOR PUMP

Type B for High Temperature Services

Provides zero-leakage performance for hot oils, hot water, and other high-temperature chemicals. Available in horizontal or vertical configurations, featuring a motor cooling jacket and an integrated heat exchanger. Liquid temp. up to 840°F / 450 °C.

Qmax	: 3430 gpm	13m ³ /min
TDH Max	: 530 ft	160 m
kW Max	: 295 HP	220 kW
Temp	: 842°F	450°C



CANNED MOTOR PUMP

Higher Heat Resistant Canned Motor Types U & X

Types U and X are optimally designed for handling high-temperature liquids, including heat transfer oils, hot water, and high melting point chemicals, with unmatched ease. These types do not require cooling, offering significant energy and utility savings for high-temperature pumping applications

Type U
Liquid Temp. : 446 °F 230 °C

kW Max : 214HP 160 kW

Type X
Liquid Temp. : 644 °F 340 °C

kW Max : 80HP 60 kW



CANNED MOTOR PUMP

Type D for Slurry

Type D is a horizontal design suited for handling small amounts of fine slurry. This pump features a self-circulating sealing liquid and operates without the need for a gas chamber.

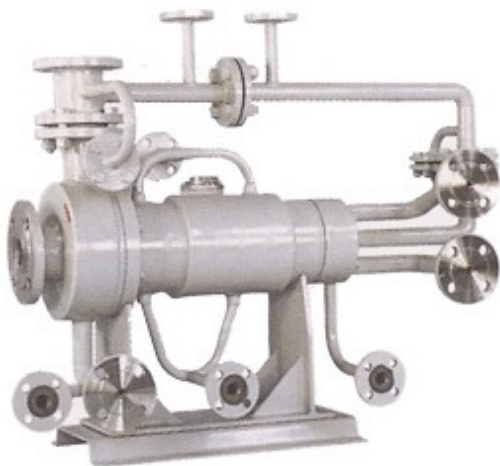
Qmax	: 2640 gpm	10m ³ /min
TDH Max	: 533 ft	160 m
kW Max	: 161 HP	120 kW
Allowable max slurry content	: 3 ~5wt%	



CANNED MOTOR PUMP

Type K-S Jacketed Motor-Pump

This series is designed to handle liquids with high melting points. Type K features a jacketed design suitable for lower melting point substances like oleic acid, fatty acid, acetic acid, amines, phenol, maleic anhydride, caustic soda, and p-xylene. Type K-S offers a heavily jacketed configuration, ideal for higher melting point liquids such as maleic acid, bisphenol, caprolactam, phthalic anhydride, phthalic acid, and naphthalene.



CANNED MOTOR PUMP

Type G Self Priming

The canned motor self-priming pump eliminates priming issues caused by shaft seal leakage. It is ideal for pumping solvents from underground tanks and for applications involving liquids with entrained or dissolved gases.

Qmax : 790 gpm 3m³/min

TDH Max : 328 ft 100 m

kW Max : 67 HP 50 kW



CANNED MOTOR PUMP

Type SG / XG for Slurry

SG and XG are vertical pump designs suited for handling relatively large volumes of slurry. Type XG includes a self-circulating sealing liquid within the motor chamber, while Type SG features external flushing. Both designs use a gas chamber to separate the pump and motor.

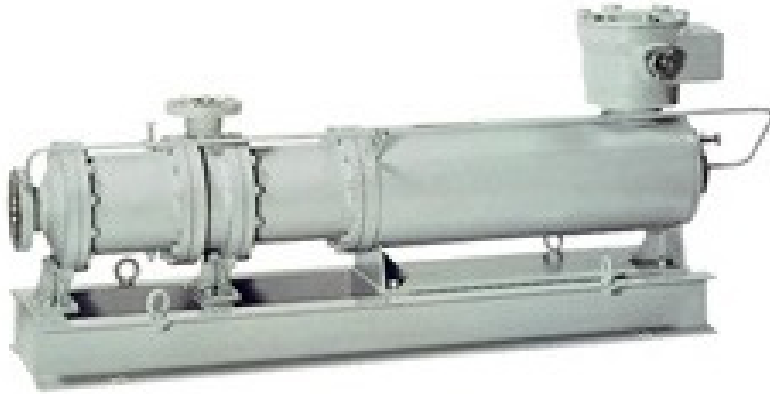
Type D, in contrast, is a horizontal pump designed for smaller amounts of fine slurry. It incorporates a self-circulating sealing liquid but does not require a gas chamber, making it well-suited for pumping chemicals prone to polymerization or crystallization and those that are inherently unstable.



CANNED MOTOR PUMP

Type F-M Multistage Pump

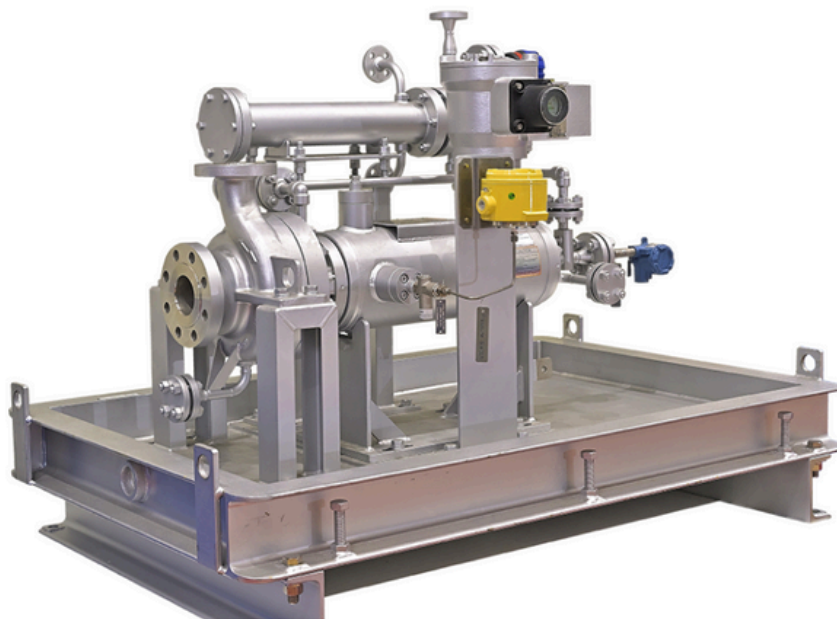
Barrel-type casing with low flow and high Total Dynamic Head (TDH), ideal for general CPI applications, reverse osmosis in electronics, and pharmaceutical and semiconductor manufacturing. Maintains all canned pump benefits, including extremely low noise and high reliability.



CANNED MOTOR PUMP

API685 Canned Pump

Horizontal centerline-mounted canned motor pump designed per API 685 specifications (for sealless pumps) to handle higher liquid temperatures. The photo shows a TCMP model engineered to API 685 standards, ideal for pumping high-temperature hydrocarbons under elevated system pressure in refinery applications. TCMP API 685 pumps are available up to 220 kW and 35 MPa (5000 psi) system pressure.



XYLO DIAPHRAGM PUMP

Pneumatic Diaphragm Pump (TG06)-Plastic

Specification

Body	:PP,PVDF,CP
Diaphragm	:Santoprene,Hytrel, Teflon, Buna-N
Valve Ball	:Teflon
Valve Seat	:PP, Teflon
Center Block	:PP
Suction Lift (mwc)	: Dry (3) Wet (7)
Max Particle diameter	: 0.4mm
Suction & disch. Size (in)	: 1/4,
Air Inlet Size(in)	: 1/4
Max Flow(lpm)	: 18
MaxHead(m)	: 84
Size	
Max Air Inlet Pressure (bar)	: 8.4



PP



PVDF



CP

DIAPHRAGM PUMP

Pneumatic Diaphragm Pump (TG15/20)-Plastic

Specification

Body	:PP,PVDF,CP
Diaphragm	:Santoprene, Hytrel, Teflon,Viton, EPDM,Buna-N
Valve Ball	:Santoprene,Teflon, Viton,S/steel
Valve Seat	:PP,PVDF,CP
Center Block	:PP
Suction Lift (mwc)	: Dry (4) Wet (7.6)
Max Particle diameter	: 2.5mm
Suction & disch. Size (in)	: 1/2, 3/4
Air Inlet Size(in)	: 1/4
Max Flow(lpm)	: 57
MaxHead(m)	: 84
Size	
Max Air Inlet Pressure (bar)	: 8.4



CP



PVDF



PP

DIAPHRAGM PUMP

Pneumatic Diaphragm Pump (TG15/20)-Metal

Specification

Body	: S/steel, Aluminium
Diaphragm	:Santoprene, Hytrel, Teflon,Viton, EPDM,Buna-N
Valve Ball	:Santoprene, Hytrel, Teflon, Viton, S/steel, Ceramic
Valve Seat	:Santoprene, Hytrel, Teflon, Viton, S/steel
Center Block	:PP, Aluminium, S/steel

Suction Lift	: Dry (4)
(mwc)	Wet (7.6)
Max Particle	: 2.5mm
diameter	
Suction &	: 1/2, 3/4
disch. Size (in)	
Air Inlet	: 1/4
Size(in)	
Max	: 57
Flow(lpm)	
MaxHead(m):	84
Size	
Max Air Inlet	: 8.4
Pressure (bar)	



SS304/316

DIAPHRAGM PUMP

Pneumatic Diaphragm Pump (TG25)-Plastic

Specification

Body	: PP, PP (PP center block),PVDF
Diaphragm	:Santoprene, Hytrel, Teflon,Viton, EPDM,Buna-N
Valve Ball	:Santoprene,Teflon, Viton, s/steel
Valve Seat	:PP, PVDF, CP
Center Block	:PP

Suction Lift	: Dry (4)
(mwc)	Wet (8)
Max Particle	: 4mm
diameter	
Suction &	: 1
disch. Size (in)	
Air Inlet	: 1/2
Size(in)	
Max	: 157
Flow(lpm)	
MaxHead(m):	84
Size	
Max Air Inlet	: 8.4
Pressure (bar)	



PVDF

DIAPHRAGM PUMP

Pneumatic Diaphragm Pump (TG25)-Metal

Specification

Body	: S/steel, Alu (PP Center Block), Alu
Diaphragm	:Santoprene, Hytrel, Teflon,Viton, EPDM,Buna-N
Valve Ball	:Santoprene, Hytrel, Teflon, Viton, S/steel, Ceramic
Valve Seat	:Santoprene, Hytrel, Teflon, Viton, S/steel
Center Block	:PP, Aluminium, S/steel

Suction Lift	: Dry (4)
(mwc)	Wet (8)
Max Particle	: 4mm
diameter	
Suction &	: 1
disch. Size (in)	
Air Inlet	: 1/2
Size(in)	
Max	: 157
Flow(lpm)	
MaxHead(m):	84
Size	
Max Air Inlet	: 8.4
Pressure (bar)	



ALU

DIAPHRAGM PUMP

Pneumatic Diaphragm Pump (TG40)-Plastic

Specification

Body	: PP, PP(PP Center Block),PVDF
Diaphragm	:Santoprene, Hytrel, Teflon,Viton, EPDM,Buna-N
Valve Ball	:Santoprene,Hytrel,Teflon,Viton, S/steel, Ceramic
Valve Seat	:PP, PVDF, CP
Center Block	:PP

Suction Lift	: Dry (5)
(mwc)	Wet (8)
Max Particle	: 5mm
diameter	
Suction &	: 1-1/2
disch. Size (in)	
Air Inlet	: 1/2
Size(in)	
Max	: 358
Flow(lpm)	
MaxHead(m):	84
Size	
Max Air Inlet	: 8.4
Pressure (bar)	



PP (PP Center block)

DIAPHRAGM PUMP

Pneumatic Diaphragm Pump (TG40)-Metal

Specification

Body	: S/steel, Alu(PP Center Block), Alu
Diaphragm	: Santoprene, Hytrel, Teflon, Viton, EPDM, Buna-N
Valve Ball	: Santoprene, Hytrel, Teflon, Viton, S/steel, Ceramic
Valve Seat	: Santoprene, Hytrel, Teflon, Viton, S/steel
Center Block	: PP, Aluminium, S/steel

Suction Lift (mwc)	: Dry (5) Wet (8)
Max Particle diameter	: 5mm
Suction & disch. Size (in)	: 1-1/2
Air Inlet Size(in)	: 1/2
Max Flow(lpm)	: 358
MaxHead(m)	: 84
Size	
Max Air Inlet Pressure (bar)	: 8.4



SS304/316

DIAPHRAGM PUMP

Pneumatic Diaphragm Pump (TG50)-Plastic

Specification

Body	: PP, PP(PP Center Block), PVDF
Diaphragm	: Santoprene, Hytrel, Teflon, Viton, EPDM, Buna-N
Valve Ball	: Santoprene, Hytrel, Teflon, Viton, S/steel, Ceramic
Valve Seat	: PP, PVDF, CP
Center Block	: PP

Suction Lift (mwc)	: Dry (5) Wet (8)
Max Particle diameter	: 6mm
Suction & disch. Size (in)	: 2
Air Inlet Size(in)	: 1/2
Max Flow(lpm)	: 587
MaxHead(m)	: 84
Size	
Max Air Inlet Pressure (bar)	: 8.4



PP

DIAPHRAGM PUMP

Pneumatic Diaphragm Pump (TG50)-Metal

Specification

Body	: S/Steel, Alu(PP Center Block), Alu
Diaphragm	: Santoprene, Hytrel, Teflon, Viton, EPDM, Buna-N
Valve Ball	: Santoprene, Hytrel, Teflon, Viton, S/steel, Ceramic
Valve Seat	: Santoprene, Hytrel, Teflon, Viton, S/steel
Center Block	: PP, Aluminium, S/steel

Suction Lift (mwc)	: Dry (5) Wet (8)
Max Particle diameter	: 6mm
Suction & disch. Size (in)	: 2
Air Inlet Size(in)	: 1/2
Max Flow(lpm)	: 587
MaxHead(m)	: 84
Size	
Max Air Inlet Pressure (bar)	: 8.4



ALU

DIAPHRAGM PUMP

Pneumatic Diaphragm Pump (TG80)-Plastic

Specification

Body	: PP, PP(PP Center Block), PVDF
Diaphragm	: Santoprene, Hytrel, Teflon, Viton, EPDM, Buna-N
Valve Ball	: Santoprene, Hytrel, Teflon, Viton, S/steel, Ceramic
Valve Seat	: PP, PVDF, CP
Center Block	: PP

Suction Lift (mwc)	: Dry (5) Wet (8)
Max Particle diameter	: 9.4mm
Suction & disch. Size (in)	: 3
Air Inlet Size(in)	: 3/4
Max Flow(lpm)	: 1060
MaxHead(m)	: 84
Size	
Max Air Inlet Pressure (bar)	: 8.4



PP

DIAPHRAGM PUMP

Pneumatic Diaphragm Pump (TG80)-Metal

Specification

Body	:S/steel, Alu(PP Center Block) ,Alu
Diaphragm	:Santoprene, Hytrel, Teflon,Viton, EPDM,Buna-N
Valve Ball	:Santoprene, Hytrel, Teflon, Viton, S/steel, Ceramic
Valve Seat	:Santoprene, Hyrel, Teflon, Viton, S/steel
Center Block	:PP, Aluminium, S/steel
Suction Lift (mwc)	: Dry (5) Wet (8)
Max Particle diameter	: 9.4mm
Suction & disch. Size (in)	: 3
Air Inlet Size(in)	: 3/4
Max Flow(lpm)	: 1060
MaxHead(m)	: 84
Size	
Max Air Inlet Pressure (bar)	: 8.4



ALU

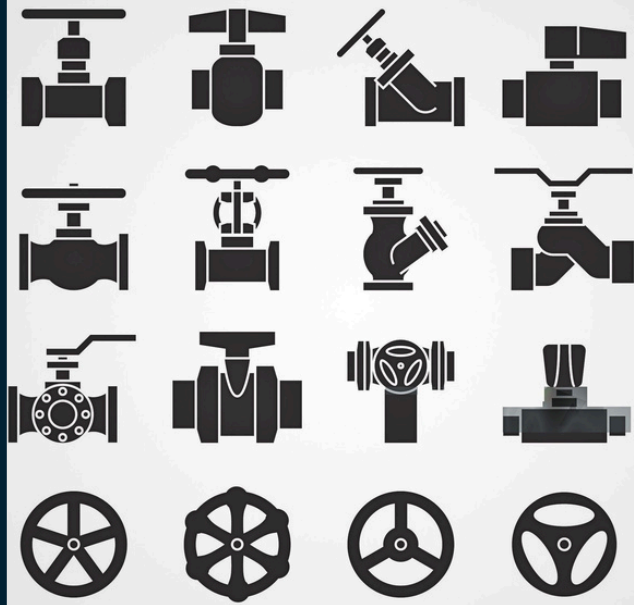


SS304/316



ALU-B

SALES PRODUCT VALVES

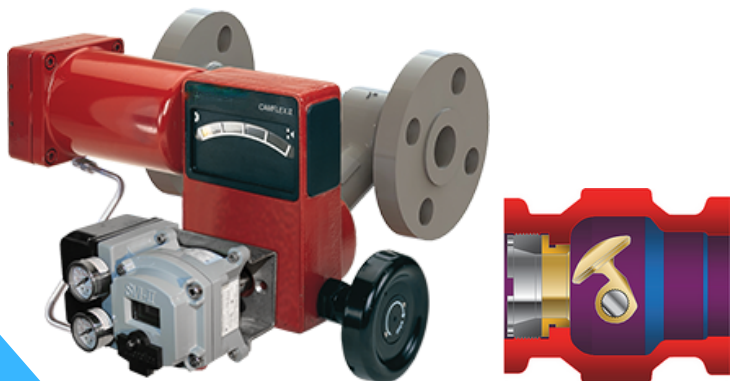


Control Valves

M@soneilan Rotary Control Valve Specification

Body	:Cast Steel / SS316
Body Rating	:Class 600#
Shaft	:Stainless Steel
Plug	:Solid Stellite (1"-2") SS316L Hardfaced Stellite (3"-12")
Seat	:SS316 (replaceable)
Packing	:PTFE with carbon fiber
Flow Direction	: Flow-to-Close / Flow-to-Open
Handwheel	:Yes
Connection	:Flangeless, ANSI 150/300/600 or PN16/40(universal)
Size	:1"-12"

- c/w Spring Return Diaphragm Actuator, **Fail-close (FC)**/ Fail-Open (FO)
- c/w *M@soneilan* Smart E/P Positioner
- c/w Internal Copper Tubing, Airset with Gauge (Parker P31)



Smart Positioner

M@soneilan Smart Positioner

M@soneilan The Smart Positioner is an easy-to-use 4-20mA digital valve positioner featuring HART® Protocol, designed for single-acting pneumatic control valves. It utilizes reliable magnetic position measurement technology.

Features

- Easy-to-use "**One-button-one-function**" local interface
- **Non-contact** magnetic travel sensor
- Robust industrial **Aluminum casing**
- Versatile design for both linear and rotary valve applications
- Universal label with FM, FMC, ATEX, IEC, and CE certifications
- Compatible with HART communication
- Integrated isolated solid-state switches



Ball Valves

1-PC/2-PC/ 3-PC Ball Valve

Specification (1-PC)

Brand :Valveworks
Body :SS316
Ball :SS316
Seat :**PTFE**
Connection :BSPT
Rating :800WOG



Specification (2-PC)

Brand :Valveworks
Body :SS316
Ball :SS316
Seat :**TFM1600**
Connection :BSPT
Rating :1000WOG



Specification (3-PC High Performance)

Brand :Valveworks
Body :WCB/SS316
Ball :SS316
Seat :**25% Carbon filled PTFE, 50% SS filled PTFE, PEEK**
Connection :BSPT/SW/BW
Rating :PN50/64



Butterfly Valves

Wafer type Butterfly Valve

Specification

Brand :Ebro
Model :Z011-A
Body :**CI**/ DI/ CS/ SS316
Disc :SS316
Seat :**EPDM/NBR/ HNBR/Viton**
Connection :Wafer Type
Rating :PN16, ANSI 150, JIS-10K



Brand :Ebro
Model :Z014-A
Body :**DI**/ CS
Disc :SS316
Seat :**EPDM/NBR/Viton**
Connection :Lug Type
Rating :PN16, ANSI 150, JIS-10K



Brand :Ebro
Model :T211-A
Body Disc :**DI**/ SS316
Seat :Duplex-SS/ with PTFE-coated
PTFE (w/ silicon elastomer insert)
Connection :Wafer Type
Rating :PN16, ANSI 150, JIS-10K



Bellow Sealed Globe Valves

Specification

Brand :Valveworks
Design :Straight Type/ Y-Pattern
Body :**CI/CS/316/316L/ 317LMN/ 904L**
Bellows :**AISI-321/ AISI-316Ti /Hastelloy C-276**
Seat :WCB/SS/
Hardfaced/ Stellite 21
Connection :**Flanged End/BW**
Rating :PN16/40/160
ANSI 150/300/600/800



Specification

Brand :Valveworks
Design :Y-Type
Body :**CI/CS**
Bellows :St. Steel 1.4541/ AISI-321
Seat :ASTM-A105+
Hard Faced 13% Cr
Connection :Flanged End/BW
Rating :PN16/25/40/
ANSI 150/300/600



Actuators- Pneumatic & Electric

Specification

Brand :Ebro
Type :Double-Acting
Design :Scotch-Yoke
Body :Aluminium
Temp. : -20°C to $+80^{\circ}\text{C}$
Control Pres. :2.5 to 8barg
Limit of Travel : 90°C , $-8/+3^{\circ}\text{C}$



Brand :Ebro
Type :Single-Acting
Design :Scotch-Yoke
Body :Aluminium
Temp. : -20°C to $+80^{\circ}\text{C}$
Control Pres. :2.5 to 8barg
Limit of Travel : 90°C , $-8/+3^{\circ}\text{C}$



Brand :HKC
Type :Double/Single-Acting
Design :Rack & Pinion
Body :Aluminium
Temp. : -20°C to $+80^{\circ}\text{C}$
Control Pres. :2.5 to 8barg
Limit of Travel : 90°C , $+/-5^{\circ}\text{C}$



Limit Switch Boxes

Specification

Brand :HKC
Model :APL-210N/APL-910N
Body :Aluminium
Temp. : -20°C to $+80^{\circ}\text{C}$
Cable Entry :2 x $1/2"$ NPT
Switches 2 x SPDT (max.4 SPDT)



APL-210N (IP67 weather proof)



APL-910N (IP67 weather proof)



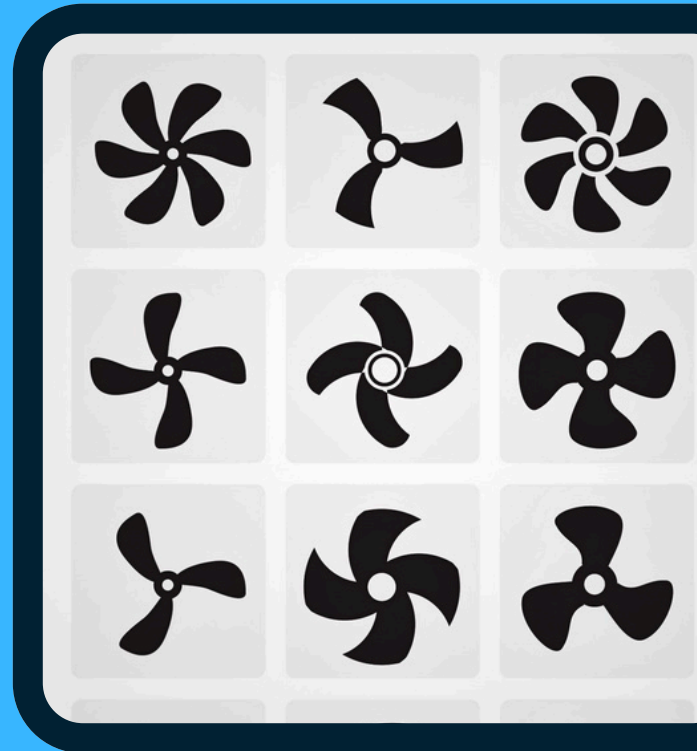
APL-410N (Ex-proof Ex d IIB T6)



APL-510N (Ex-proof Ex d IIC T6)

MIXERS

CUSTOM-DESIGNED AND
FABRICATED TO FIT THE
APPLICATION



TOP ENTRY MIXER

SERIES 1

Specification

Design :**Direct Drive**
Application :Designed for open tank and atmospheric condition.



TOP ENTRY MIXER

SERIES 2

Specification

Design :**Designed with Gear Box**
Application :Designed for open tank and atmospheric condition.



TOP ENTRY MIXER

SERIES 3

Specification

Design : **Operated with sealing device**
Application : Designed for closed tank, atmospheric condition or pressurized tank



Contact Us



PT. INDO TEKNIK GEMILANG

NIB: 1807240081054
NPWP: 19.762.463.8-411.000

Address : Ruko Arcade Laverde Blok R3/1,
Kel. Jelupang, Kec. Serpong Utara,
Kota Tangerang Selatan,
Banten 15323, Indonesia.

Website : www.ptitg.co.id

Email : info@ptitg.co.id

Tel : +62-21-3892-9102