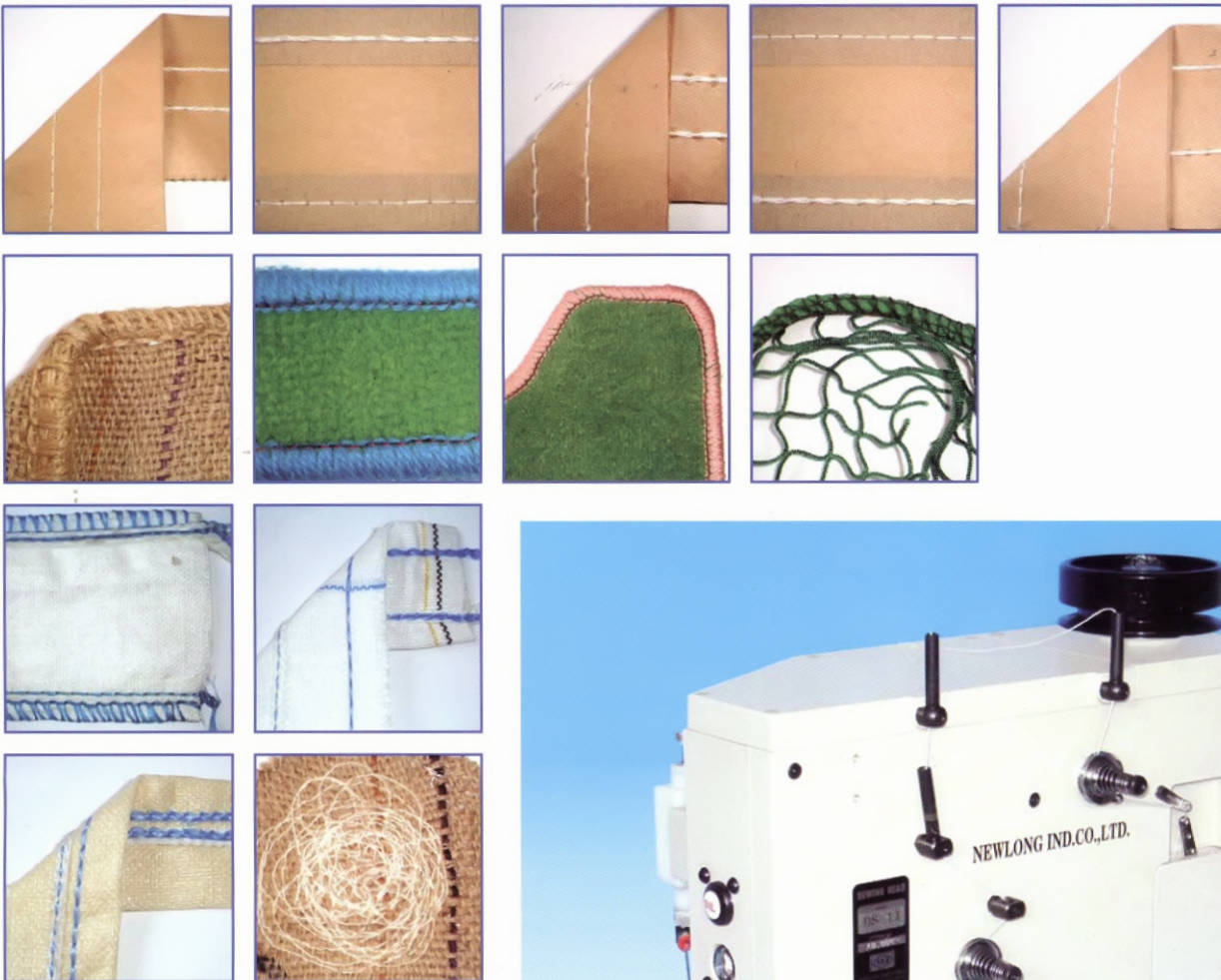




NLI Fujioka Factory has adopted ISO 9001 to be certified its quality control technology for Industrial Sewing Machine and relative products

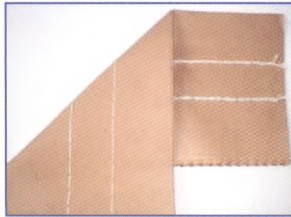
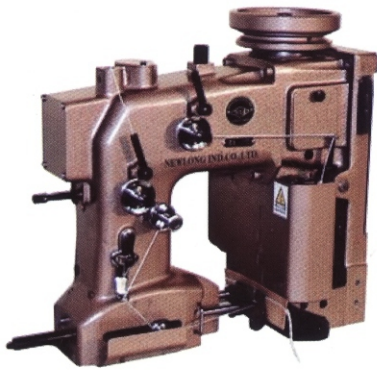
GENERAL CATALOG

SEWING MACHINE

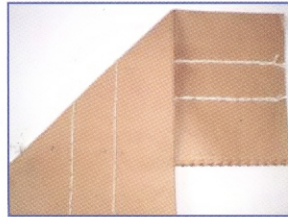


NEWLONG INDUSTRIAL CO., LTD.

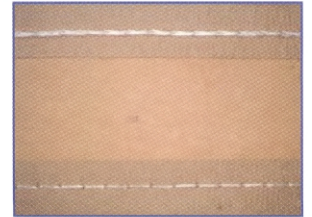
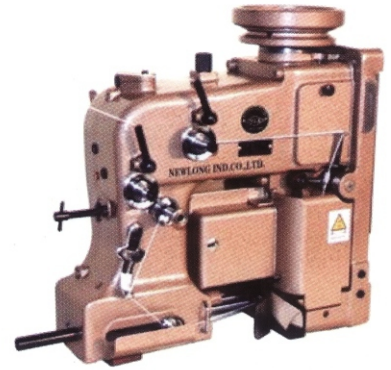
MM-002



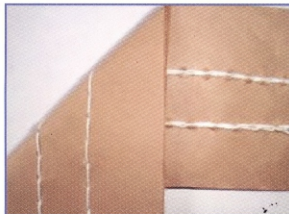
Model	DS-2 II
Max. Speed	1400rpm
Seam	Duble thread chain stitch (Type 401)
Stitch Width	7~12mm
Needle	DR×2 #25
Thread	20/6 · 20/9
Bag Material	Paper · PP · Cotton · Jute
Oiling	by hand · Oiler



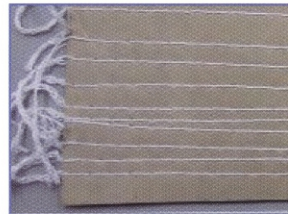
Model	DS-5 II
Max. Speed	800rpm
Seam	Duble thread chain stitch (Type 401)
Stitch Width	7~12mm
Needle	DR×2 #26
Thread	20/6 · 20/9
Bag Material	Paper · PP · Jute
Oiling	by hand



Model	DS-C
Max. Speed	1400rpm
Seam	Duble thread chain stitch (Type 401)
Stitch Width	7~12mm
Needle	DR×2 #25
Thread	20/6 · 20/9
Bag Material	Paper
Oiling	by hand · Oiler



Model	DS-7A/DS-7C
Max. Speed	1600rpm
Seam	Duble thread chain stitch (Type 401)
Stitch Width	7.7mm (fixed)
Needle	DN-H29 #26
Thread	20/6 · 20/9
Bag Material	Paper · PP
Oiling	by hand · Oiler

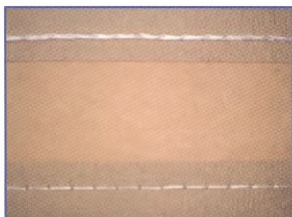
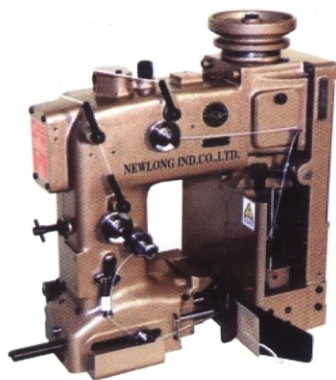


Model	DS-11
Max. Speed	2000rpm
Seam	Duble thread chain stitch (Type 401)
Stitch Width	10.2mm (fixed)
Needle	DN-H29 #26
Thread	20/6 · 20/9
Bag Material	Paper · PP
Oiling	Automatic · Oil pump · Oil



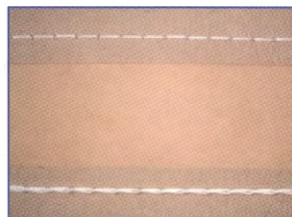
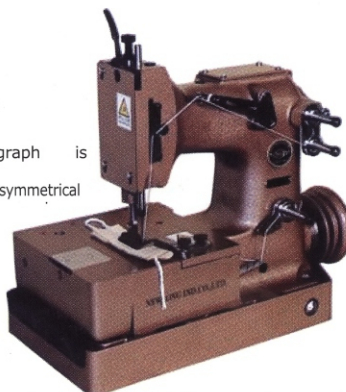
Model	DS-9A/C, DS-9AW/CW
Max. Speed	2500rpm
Seam	Duble thread chain stitch (Type 401)
Stitch Width	7~10.5mm
Needle	DR-H30 #26
Thread	20/6 · 20/9
Bag Material	Paper · PP
Oiling	Oil bath

BAG MAKING SEWING HEAD



Model	DS-6AC	DS-6HS/DS-6W
Max.	1400rpm	1800rpm
Seam	Duble thread chain stitch (Type 401)	
Stitch Width	7~10.5mm	
Needle	DR×2 #25	
Thread	20/6 · 20/9	
Bag Material	Paper · PP	
Oiling	by hand · Oiler	

※ A photograph is
DN-2HS.
DN-2LHS is a symmetrical



Model	DN-2H	DN-2LH	DN-2W
Max.	3000rpm		
Seam	Duble thread chain stitch (Type 401)		
Stitch Width	7~12mm		7~
Needle	DR×2 #25		UY143GS 200
Thread	20/6 · 20/9		
Bag Material	Paper · PP		
Oiling	Autmatic		



Model	DN-5U
Max. Speed	2800rpm
Seam	Duble thread chain stitch (Type 401)
Stitch Width	7~12mm
Needle	DR×2 #25
Thread	20/6 · 20/9
Bag Material	Paper · PP
Oiling	Autmatic



Model	DKN-1/DKN-1BP
Max. Speed	3800rpm
Seam	Duble thread chain stitch (Type 401)
Stitch Width	3.6~8.5mm
Needle	UY143GS 200
Thread	20/6
Bag Material	Paper · PP
Oiling	Autmatic

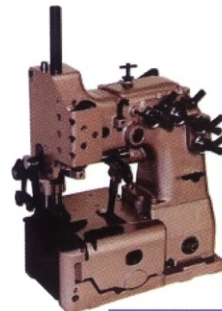


Model	DKN-3/3BP	DKN-3W
Max. Speed	5000rpm	4000rpm
Seam	Duble thread chain stitch (Type 401)	
Stitch Width	5~9.5mm	
Needle	UY144GS 200	
Thread	20/6	
Bag Material	PP	
Oiling	Autmatic	



Model	DR-3A
Max. Speed	1800rpm
Seam	Duble thread chain stitch (Type 401)
Stitch Width	6.5~15mm
Needle	UO-H33 #27
Thread	Cotton · Synthetic · Jute
Bag Material	Jute · Container bags
Oiling	by hand · Oiler

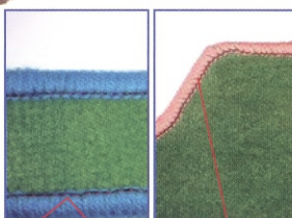
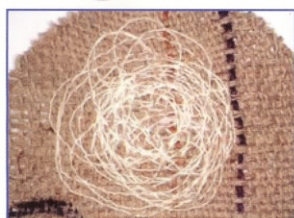
SPECIAL SEWING HEAD



Model	DHR-6
Max. Speed	1400rpm
Seam	Overseaming stitch
Stitch Width	6~13mm
Needle	UY9853G 430
Thread	Polypropylene
Bag Material	Jute · PP
Oiling	by hand · Oiler

Model	HR-2A/HR-2J
Max. Speed	1800rpm
Seam	Overseaming stitch
Stitch Width	6.5~15mm
Needle	UO1970 400
Thread	Cotton · Jute
Bag Material	Jute · PP
Oiling	by hand · Oiler

Model	DR-7UW
Max. Speed	1400rpm
Seam	Duple thread chain stitch (Type 401)
Stitch Width	7~12mm
Needle	UO-H34 #29
Thread	Polypropylene
Bag Material	Container bags
Oiling	by hand · Oiler



Model	DD-5
Max. Speed	1500rpm
Seam	Lock stitch
Stitch Width	Free feed
Needle	216×7 280
Thread	Cotton
Bag Material	Container bags Jute (jute bag)
Oiling	by hand · Oiler

Model	HR-4A	HR-4B	HR-4C
Max.Speed	1800rpm		
Seam	Decoration sewing	Volume sewing	Curve sewing
Stitch Width	3.5~6mm		
Needle	SG-H28 #26		DR-G94 #27
Thread	Wool		Syntheti
Application	Rug · Carpet		The carpet for cars
Oiling	by hand · Oiler		

Model	HR-4N
Max. Speed	800rpm
Seam	Overseaming stitch (cording)
Stitch Width	6.5~15mm
Needle	DR-H32 #32
Thread	Synthetic
Application	Fishing net · Sport net
Oiling	by hand · Oiler



NEWLONG INDUSTRIAL CO., LTD.

8-14, Shiratori 4-chome, Katsushika-ku, Tokyo 125-0063, Japan

PT. TOTALTEKNOLOGI SUMBER ENERGI

Whatsapp : 0812 4486 2368, 0881 0366 73792 , 0881 0367 47428

Email : totalteknologi.sumberenergi@yahoo.co.id