



**HUAKEAI**

**HUAKAI VALVE MANUFACTURE CO.LTD**

Address: Yancheng City Sheyang County town of Hai Industrial Park

Tel: 0515-69683328

Fax: 0515-69683319

Website: [www.hkv-valves.com](http://www.hkv-valves.com)

Zip Code: 224000

**HUAKAI VALVE MANUFACTURE CO.LTD**



COMPANY INTRODUCTION

INTRODUCTION

CASTING

QUALITY

MANUFACTURE

PRODUCT VIEW

GATE,GLOBLE, CHECK VALVE

FLOATING BALL VALVE

TRUNNION MOUNTED BALL VALVE

BUTTERFLY VALVE

01-08

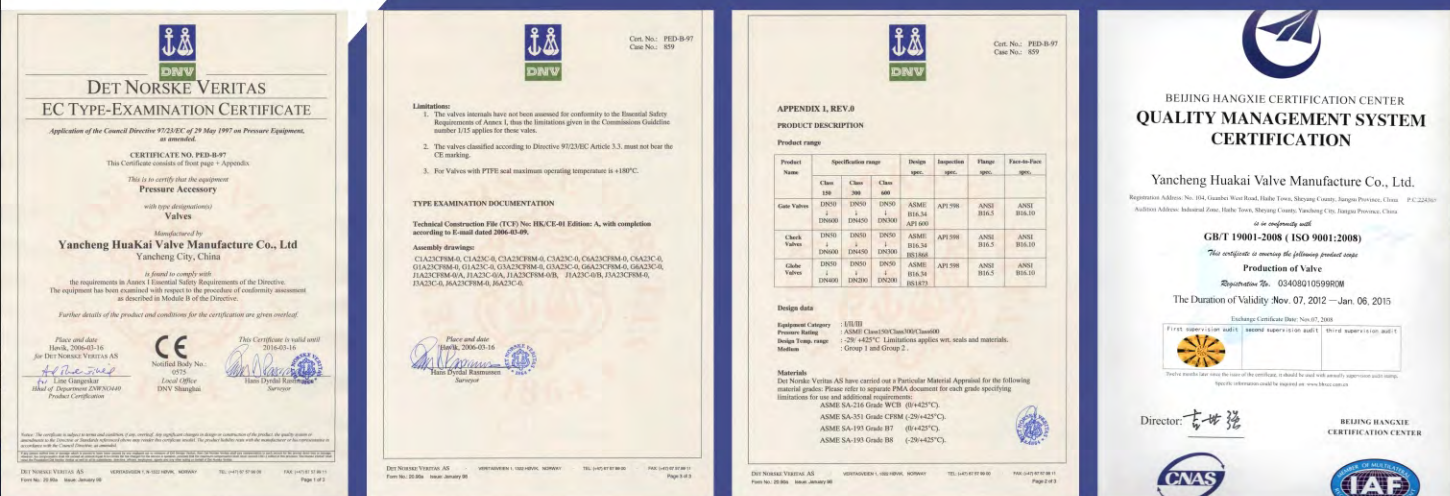
09-20



COMPANY INTRODUCTION

Hua Kai valve industry's mission is to provide customers with high quality products, competitive prices, to meet the needs of our customers. Company was founded in 2000, covers an area of 6000M2, the workshop area of 25000M2, with an annual output of various types of valve 60000.

Huakai valve industry in the production valve, globe valve, check valve, ball valve, the plug valve and the butterfly valve and so on, the production specifications for 1 / 2 "(DN50) 48" (DN1200), pressure rating 125LB~2500LB provide valve material WCB, WCC, LCB, LCC, WC6, WC9, C5, C12,C12A, CF8, CF8M, CF3, CF3M, CN7M, Monel, Inconel, duplex steel, The quality of the valve industry is committed to providing customers with zero defect valve, the establishment of a sound quality management system, has been ISO 9001, 6D CE/PED, TS, API and other certificates.





METARIAL

Hua Kai can produce casting materials, including carbon steel, high and low alloy steel and stainless steel and other dozens of material valve castings and other mechanical parts, the annual production capacity of 12000 tons.

The casting process for production, the main production equipment with wax pattern manufacture complete sets of equipment, intermediate frequency induction furnace, gas furnace, trolley type heating furnace, shot blasting machine and so on.

German SPECPRO spectrometer, hydraulic universal material testing machine, impact testing machine, impact testing cryogenic tank, the impact specimen notch broaching machine, metallographic microscope, X-ray machine, machine, magnetic particle flaw, wall thickness measurement instrument etc. the main testing equipment.

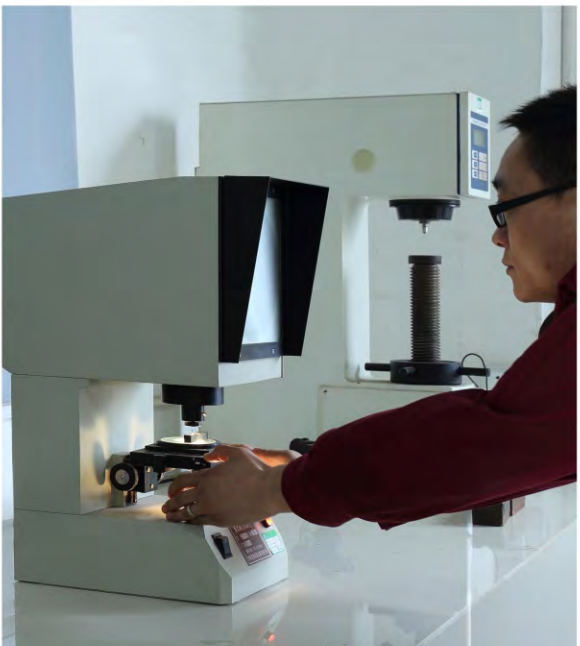






QUALITY MANAGEMENT

Huakai valve from raw material incoming inspection, process inspection, final inspection to the implementation of strict quality control, the factory has a series of advanced detection instruments and equipment used to test various control link, such as spectral analysis, mechanical properties, nondestructive testing, thickness testing and so on.





MANUFACTURING

Has set up Huakai mechanical processing, welding, heat treatment, machining center, paint coating line etc. all kinds of processing equipment more than 200 sets, the largest diameter of processing 2500mm, the largest single weight 10 tons, comprehensive use of CNC machine tools and machining centers to ensure that the products of excellent performance.







PRODUCT RANGE

Valve Type		Standard	Valve Size					
			150lb	300lb	600lb	900lb	1500lb	2500lb
Gate Valve	Cast Steel Gate Valve	API 600	2"~60"	2"~48"	2"~40"	2"~24"	2"~24"	2"~24"
	Forged Steel Gate Valve	API 602	3/8"~2 1/2"	3/8"~2 1/2"	3/8"~2 1/2"	3/8"~2 1/2"	3/8"~2 1/2"	3/8"~2 1/2"
	Pressure Seal Gate Vavle	ASME B16.34	/	/	2"~24"	2"~24"	2"~24"	2"~24"
	Through Conduit Gate Valve	API 6D	2"~36"	2"~36"	2"~36"	2"~24"	2"~24"	2"~12"
	Bellow Seal Gate Valve	API 600	2"~24"	2"~24"	2"~24"	2"~24"	2"~24"	2"~24"
Globe Valve	Cast Steel Globe Valve	BS 1873 API 623	2"~24"	2"~24"	2"~16"	2"~12"	2"~12"	2"~12"
	Forged Steel Globe Valve	API 602	3/8"~2 1/2"	3/8"~2 1/2"	3/8"~2 1/2"	3/8"~2 1/2"	3/8"~2 1/2"	3/8"~2 1/2"
	Pressure Seal bonnet Globe valve	ASME B16.34	/	/	2"~16"	2"~12"	2"~12"	2"~12"
	Bellow Seal Globe Valve	BS1873 API 623	2"~24"	2"~24"	2"~16"	2"~12"	2"~12"	2"~12"
	Y Globe Valve	BS 1873	2"~12"	2"~12"	2"~12"	2"~12"	2"~12"	2"~12"
Check Valve	Cast Steel Check Valve	BS1868 API 594	2"~40"	2"~36"	2"~36"	2"~24"	2"~24"	2"~24"
	Forged Steel Check Valve	API 602	3/8"~2 1/2"	3/8"~2 1/2"	3/8"~2 1/2"	3/8"~2 1/2"	3/8"~2 1/2"	3/8"~2 1/2"
	Pressure Seal Check Valve	ASME B16.34	/	/	2"~24"	2"~24"	2"~24"	2"~24"
	Dual Plate Check Valve	API 594	2"~60"	2"~48"	2"~42"	2"~24"	2"~24"	2"~24"
	Axil Flow Check Valve	API6D	2"~60"	2"~48"	2"~42"	2"~24"	2"~24"	2"~12"
Floating Ball Valve	1PC CAST STEEL	ISO 17292	1/2"~8"	1/2"~8"	/	/	/	/
	2PCS CAST STEEL	ISO 17292	1/2"~10"	1/2"~10"	1/2"~10"	/	/	/
	2PCS Forged Steel	ISO 17292	1/2"~10"	1/2"~10"	1/2"~6"	1/2"~2"	1/2"~2"	1/2"~1"
	3PCS Forged Steel	ISO 17292	/	/	/	1/2"~2"	1/2"~2"	1/2"~1"
Trunnion Mounted Ball valve	2PCS Cast Steel	API 6D	2"~14"	2"~14"	2"~14"	/	/	/
	3PCS Cast Steel	API 6D	16"~48"	16"~48"	16"~48"	/	/	/
	2PCS Forged Steel	API 6D	2"~4"	2"~4"	/	/	/	/
	3PCS Forged Steel	API 6D	6"~48"	6"~48"	1"~48"	0.5"~36"	0.5"~24"	0.5"~12"
	Top Entry	API 6D	2"~36"	2"~36"	2"~36"	2"~12"	2"~12"	/
	Fully Welded	API 6D	2"~60"	2"~60"	2"~60"	2"~36"	2"~24"	2"~12"
	Metal Seated	API 6D	2"~48"	2"~48"	2"~48"	2"~36"	2"~24"	2"~12"
Butterfly Valve	Concentric Butterfly Valve	API 609	2"~48"	/	/	/	/	/
	Double Offset Butterfly valve	API 609	2"~48"	2"~48"	2"~24"	/	/	/
	Triple Offset Butterfly valve	API 609	2"~48"	2"~48"	2"~24"	2"~10"	/	/



CONVENTION  
GATE, GLOBE, CHECK VALVE

Products Range

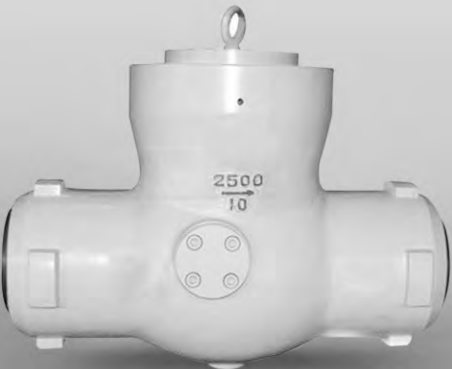
Size: 2"~48"  
Rating: 150LB~2500LB  
Body Materials: Carbon Steel, Stainless Steel,  
Alloy Steel, Duplex S.S., Bronze  
Trim: Per API 600  
End Connection: RF, RTJ, BW  
Operation: Handwheel, Gear, Motor



PRESSURE SEAL  
GATE, GLOBE, CHECK VALVE

Products Range

Size: 2"~30"  
Rating: 600LB~2500LB  
Body Materials: Carbon Steel, Stainless Steel,  
Chrome-Moly Alloy Steel, Bronze  
Trim: Per API 600  
End Connection: RF, RTJ, BW  
Operation: Handwheel, Gear, Motor







THROUGH CONDUIT GATE VALVE

Products Range  
Size: 2"~48"  
Rating: 150LB~2500LB  
Body Materials: Carbon Steel, Stainless Steel,  
Alloy Steel, etc.  
Trim: Soft Seated or Metal Seated  
End Connection: RF, RTJ, BW  
Operation: Handwheel, Gear, Motor, Pneumatic,  
Gas Over Oil, Hydraulic



FULL OPENING CHECK VALVE

Products Range  
Size: 2"~48"  
Rating: 150LB~2500LB  
Body Materials: Carbon Steel, Stainless Steel, Alloy Steel, Bronze  
Trim: 13Cr, Stainless Steel, Alloy Steel  
End Connection: RF, RTJ, BW

AXIAL FLOW CHECK VALVE

Products Range  
Size: 2"~60"  
Rating: 150LB~2500LB  
Body Materials: Carbon Steel, Stainless Steel,  
Alloy Steel, Bronze  
Trim: 13Cr, Stainless Steel, Alloy Steel  
End Connection: RF, RTJ, BW



DUAL PLATE CHECK VALVE

Products Range  
Size: 2"~36"  
Rating: 150LB~600LB  
Body Materials: Carbon Steel, Stainless Steel, Alloy Steel, Bronze  
Trim: 13Cr, Stainless Steel, Alloy Steel  
End Connection: Wafer, Lug, RF



## FORGED STEEL GATE, GLOBE, CHECK VALVE

### Products Range

Size: 1/2"~2-1/2"

Rating: 800LB ,150LB~2500LB

Body Materials: Carbon Steel, Stainless Steel, Alloy Steel, Bronze

Trim: 13Cr, Stainless Steel

End Connection: RF, BW, NPT, SW

Operation: Handwheel, Motor



## BELLOW SEAL VALVE

### Products Range

Size: 1/2"~24"

Rating: 150LB~1500LB

Body Material: Carbon Steel, Stainless Steel, Alloy Steel, Duplex Steel

Bellow Material: Stainless Steel, Inconel

Trim: Per API600

Operation: Handwheel, Gear, Motor





2PCS CAST STEEL

Products Range  
Size: 2"~14"  
Rating: 150lb~600lb  
Body Materials: Carbon Steel, Stainless Steel, Bronze  
Trim: A105+ENP, 13Cr, F304, F316  
End Connection: RF, RTJ, BW  
Operation: Lever, Gear, Motor, Pneumatic



3PCS FORGED STEEL

Products Range  
Size: 16"~48"  
Rating: 150LB~600LB  
Body Materials: Carbon Steel, Stainless Steel, Bronze  
Trim: A105+ENP, 13Cr, F304, F316  
End Connection: RF,RTJ, BW  
Operation: Lever, Gear, Motor, Pneumatic



3-WAY BALL VALVE

Products Range  
Size: 1/2"~24"  
Rating: 150LB~2500LB  
Body Materials: Carbon Steel, Stainless Steel,  
Alloy Steel, Duplex Steel, Bronze  
Operation: Handwheel, Gear, Pneumatic





## TOP ENTRY BALL VALVE

### Products Range

Size: 2"-36"  
 Rating: 150LB~2500LB  
 Body Materials: Carbon Steel, Stainless Steel, etc.  
 Trim: A105+ENP, 13Cr, F304, F316  
 End Connection: RF, RTJ, BW  
 Operation: Lever, Gear, Motor, Pneumatic



## FULLY WELDED BALL VALVE

### Products Range

Size: 2"-60"  
 Rating: 150LB~2500LB  
 Body Materials: Carbon Steel, Stainless Steel, etc.  
 Trim: A105+ENP, 13Cr, F304, F316  
 End Connection: RF, RTJ, BW  
 Operation: Lever, Gear, Motor, Pneumatic,  
 Gas Over Oil, Hydraulic

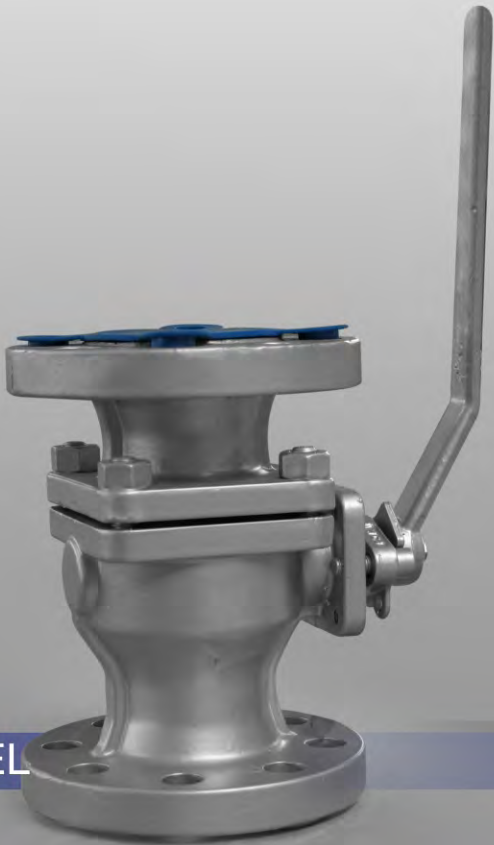






1PC CAST STEEL

Products Range  
Size: 1/2"~10"  
Rating: 150LB, 300LB  
Body Materials: Carbon Steel, Stainless Steel, etc.  
Trim: A105+ENP, 13Cr, F304, F316  
End Connection: RF  
Operation: Wrench, Gear, Motor, Pneumatic



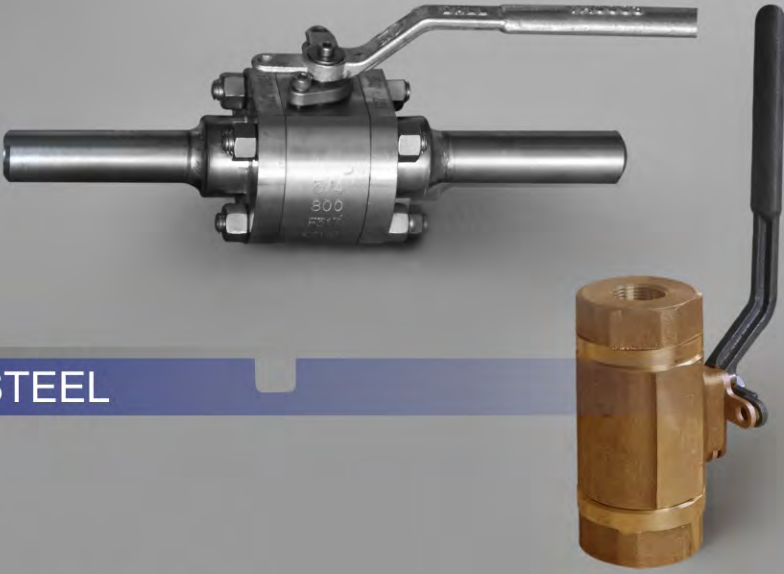
2PCS CAST STEEL

Products Range  
Size: 1/2"~10"  
Rating: 150LB, 300LB, 600LB  
Body Materials: Carbon Steel, Stainless Steel, etc.  
Trim: A105+ENP, 13Cr, F304, F316  
End Connection: RF  
Operation: Lever, Gear, Motor, Pneumatic



2PCS FORGED STEEL

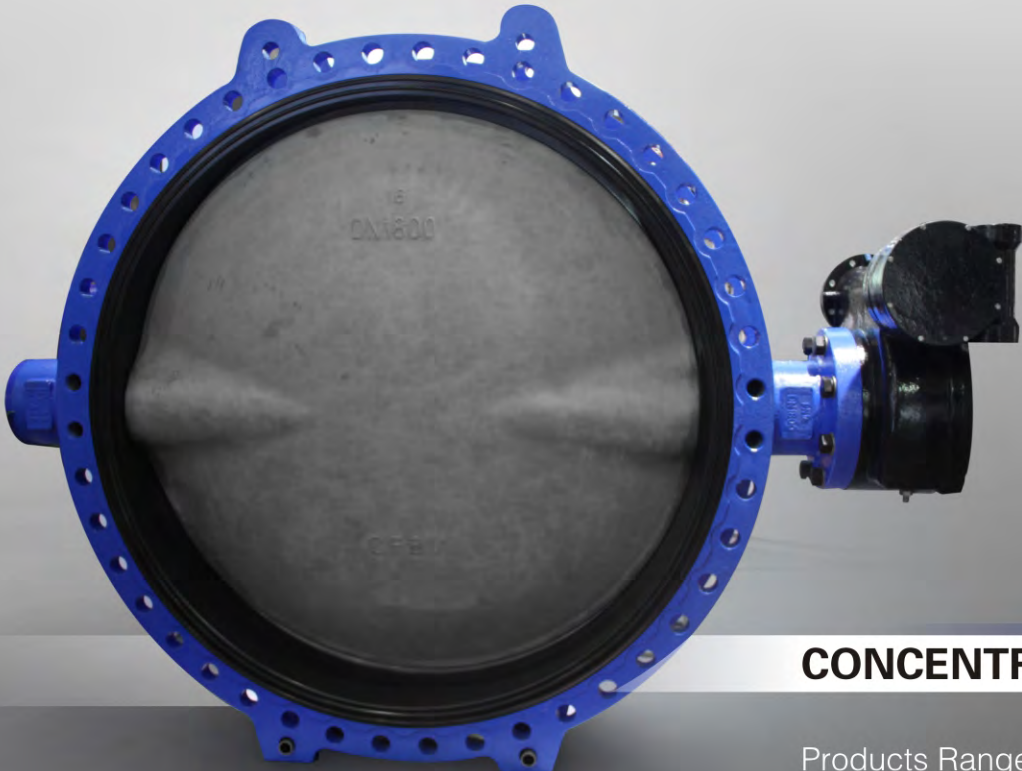
Products Range  
Size: 1/2"~10"  
Rating: 800LB, 150LB~2500LB  
Body Materials: Carbon Steel, Stainless Steel, etc.  
Trim: A105+ENP, 13Cr, F304, F316  
End Connection: RF,RTJ, BW, SW,NPT  
Operation: Handwheel, Gear, Motor, Pneumatic



3PCS FORGED STEEL

Products Range  
Size: 1/2"~10"  
Rating: 800LB, 150LB~2500LB  
Body Materials: Carbon Steel, Stainless Steel,Bronze  
Trim: A105+ENP, 13Cr, F304, F316  
End Connection: BW, SW,NPT  
Operation: Handwheel, Gear, Motor, Pneumatic

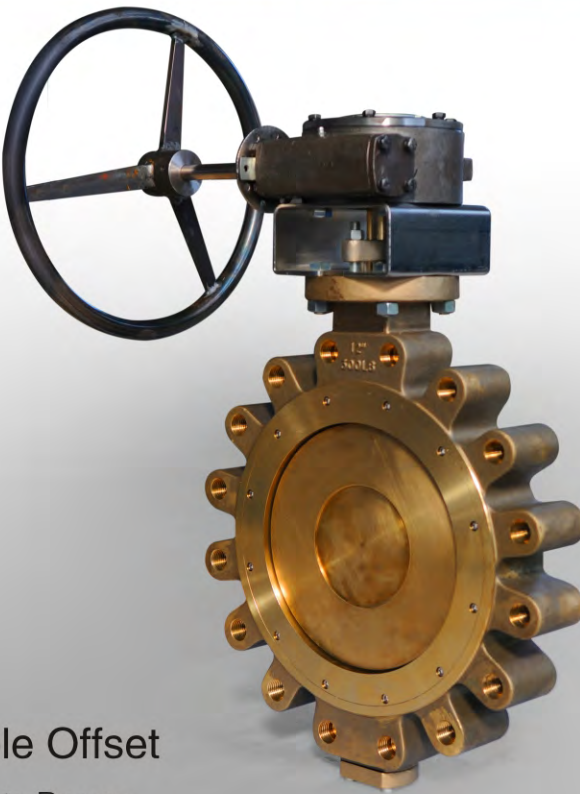




CONCENTRIC BUTTERFLY VALVE

Products Range  
Size: 2"~60"  
Rating: 125LB~150LB  
Body Materials: Carbon Steel, Stainless Steel, Ductile Iron  
Elastomer Material: VITON, EPDM, NBR, PTFE  
Trim: CS+ENP, 13Cr, Stainless Steel, Bronze  
End Connection: Water, Lug, Flange  
Operation: Handwheel, Gear, Motor, Pneumatic

HIGH PERFORMANCE BUTTERFLY VALVE



Double Offset

Products Range  
Size: 2"~48"  
Rating: 150LB~1500LB  
Body Materials: Carbon Steel, Stainless Steel, Bronze  
Trim: 13Cr, Stainless Steel, Bronze  
End Connection: Water, Lug, Flange  
Operation: Handwheel, Gear, Motor, Pneumatic



Triple Offset

Products Range  
Size: 2"~48"  
Rating: 150LB~1500LB  
Body Materials: Carbon Steel, Stainless Steel, Bronze  
Trim: 13Cr, Stainless Steel, Bronze  
End Connection: Water, Lug, Flange  
Operation: Handwheel, Gear, Motor, Pneumatic