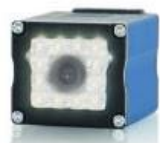




# Hantech<sup>®</sup>

**PT. TRIJAYA USAHA MANDIRI**  
Company Profile



PROFI®  
NET  
EtherNet/IP®  
www.wenglor.com/weQube



2018

Released OEM & ODM brand of HANTECH.  
Providing solutions ranges on Printing & CCP  
Solutions

( Metal Detector, Checkweigher, X-ray, Laserjet  
Printer, Inkjet Printer, Packaging Equipment )



2017

- ❑ Appointed as The Exclusive Distributor for the territory of Indonesia for **ALLTECH Germany** & **Savema Turkey**,
- ❑ One of the biggest suppliers in marking & coding

2014

Appointed by **United Barcode System (UBS) - Spain** and by **WENGLOR - Germany** as The Exclusive Distributor and as Certified Service Center for the territory of Indonesia



2010

- ❑ Appointed by **MSSC LLC - USA** as The Authorized Exclusive Distributor of MSSC LLC products for the territory of Indonesia
- ❑ Established branch offices in more than 10 cities across Indonesia

2004

- ❑ PT. Trijaya Usaha Jaya Mandiri was established from earlier CV. Harapan Jaya
- ❑ Appointed by **KBA Metronic - Germany** as The Authorized Exclusive Distributor of Continuous Inkjet Printer for the territory of Indonesia
- ❑ Later founded PT. Hantech Jaya Mandiri on 2006



## ABOUT US

### Head Office

Jl. Kelapa Gading Selatan Blok BJ 08 No. 16 - 19 Gading Serpong – Tangerang

Phone : (+62-21) 5476 999 (Hunting)

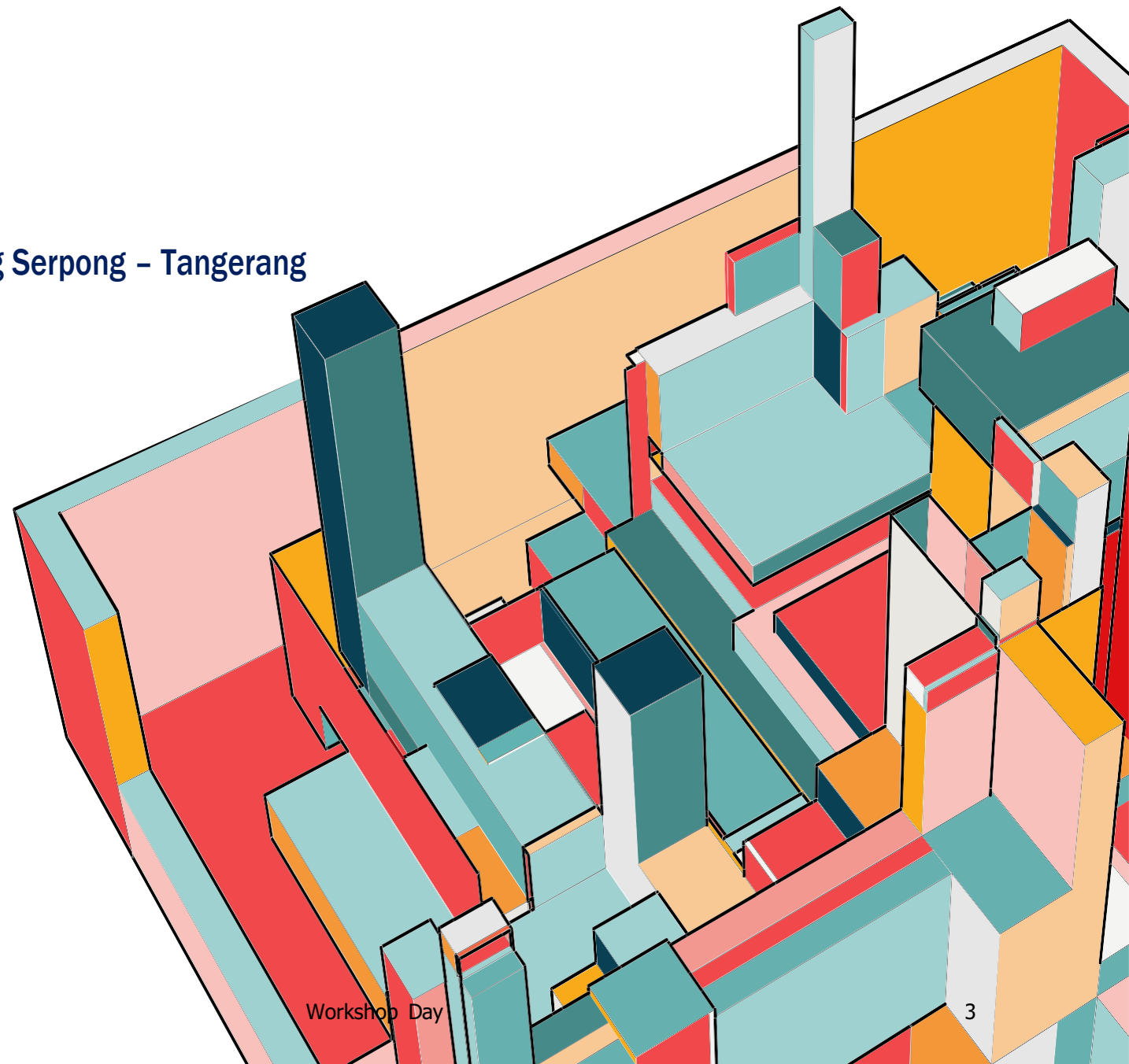
Fax : (+62-21) 5473 499

Email : trium@b1jetprint.com

### Branch Office

#### Office, Workshop & Stockiest

- |   |                                      |
|---|--------------------------------------|
| <input type="checkbox"/> Tangerang (HO) | <input type="checkbox"/> Majalengka  |
| <input type="checkbox"/> Bandung        | <input type="checkbox"/> Purwakarta  |
| <input type="checkbox"/> Medan          | <input type="checkbox"/> Probolinggo |
| <input type="checkbox"/> Bogor          | <input type="checkbox"/> Semarang    |
| <input type="checkbox"/> Cikarang JB1   | <input type="checkbox"/> Sukabumi    |
| <input type="checkbox"/> Sidoarjo       | <input type="checkbox"/> Bali        |
| <input type="checkbox"/> Bekasi         | <input type="checkbox"/> Pandaan     |
| <input type="checkbox"/> Yogyakarta     | <input type="checkbox"/> Banyuwangi  |





# PEOPLE - PARTNERS

AS A PART OF AFTER SALES COMMITMENT

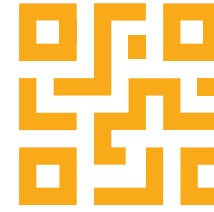


- ❖ Well trained, well-mannered & certified inhouse engineer over 85 person.
- ❖ 17 Branch all over Indonesia.
- ❖ 24/7 active support.
- ❖ Accessible Corporate Engineering-Partners.
- ❖ Scheduled Corporate Engineering-Partners, once in every periodics for improvement discusss & quality assurance.



# Hantech®

## CONTINUOUS INKJET PRINTER & LASERJET PRINTER



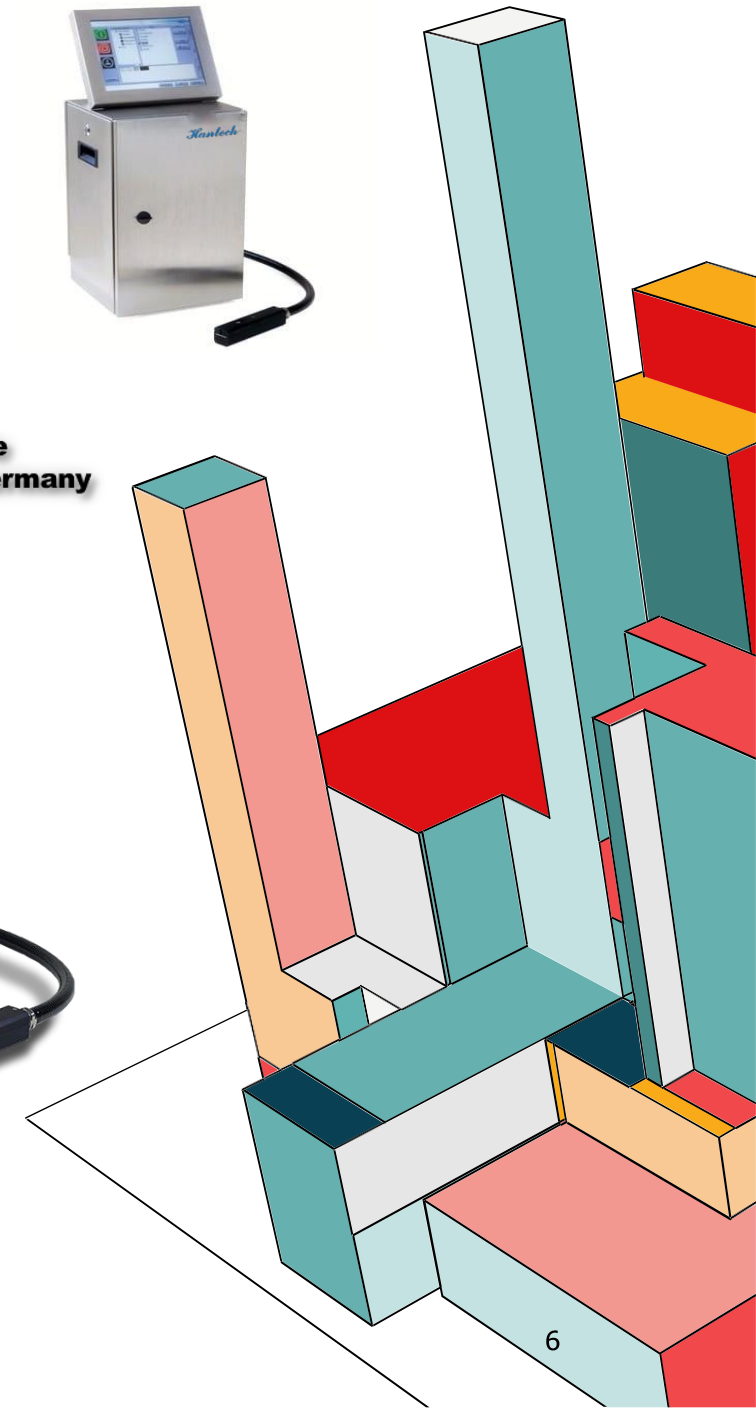
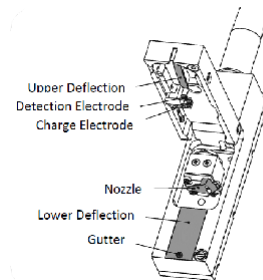
### #Authentic

- Our devices are uniquely crafted & precisely engineered 100% in Germany
- Ranges on codeREVO, codeCUBE, codeCREATOR & CdeCENTER HT-30CO, HT-F50, HT-UV Series

### #Unique

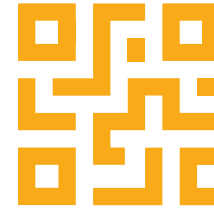
Armed with latest technology in Coding-Marking Industry :

- Automatic tuning parameters
- SRS Recovery System (Odourless Operation)
- Flipsystem Printhead
- Support Customization (Add-Ons Script)
- 4.0 Ready (option)
- High Speed printing capabilities up to 3500cps





# THERMAL INKJET PRINTER (TIJ) & DROP ON DEMAND (DOD)



## #Authentic

- Our devices are uniquely crafted & precisely engineered 100% by MSSC-USA
- Ranges on : smartJET-Pro high Resolution TIJ, QM7500, QM1610 Series

## #Unique

Armed with latest technology in Coding-Marking Industry :

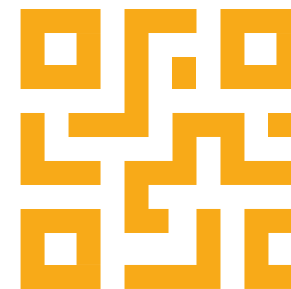
- Automatic tuning parameters
- High Resolution Printing up to 600x600 DPI
- POD Printing from database
- 4.0 Ready
- Support for integration with PLC, Vision system Checkweigher, etc





United **Barcode Systems**

Labeling, Coding & Marking



# PIEZO-JET PRINTER, UV PRINTER & AUTONOMOUS LABEL APPLICATOR

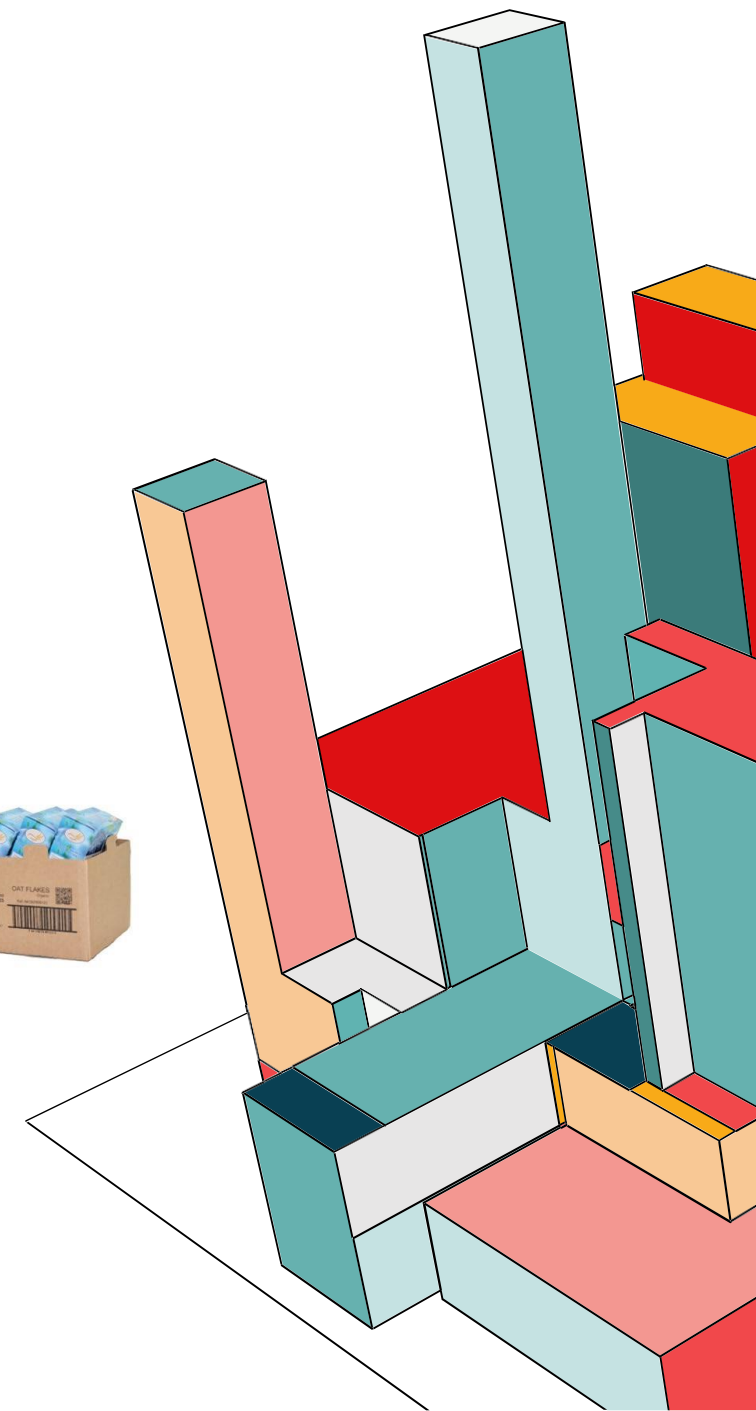
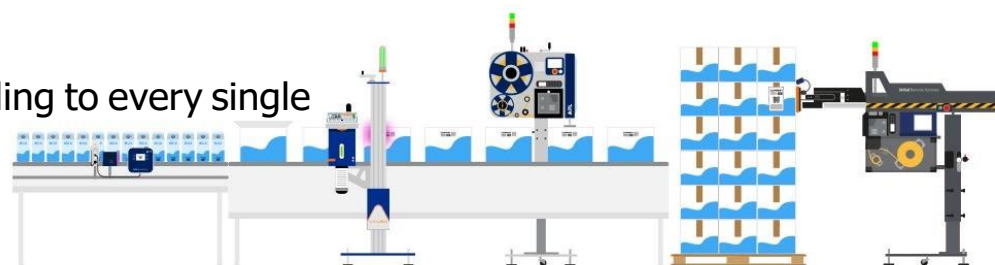
## #Authentic

- Our devices are uniquely crafted & precisely engineered 100% by United Barcode System -SPAIN
- Ranges on : UBS MRXseries , APLseries , TJXseries.

## #Unique

Armed with latest technology in Coding-Marking Industry :

- High Resolution Printing up to 600x600 DPI
- Print&apply on any surface (porous / non porous)
- Ability to integrate with any ERP
- 4.0 Ready
- Ability to be customized according to every single unique production line.





## THERMAL TRANSFER OVERPRINTER ( TTO )

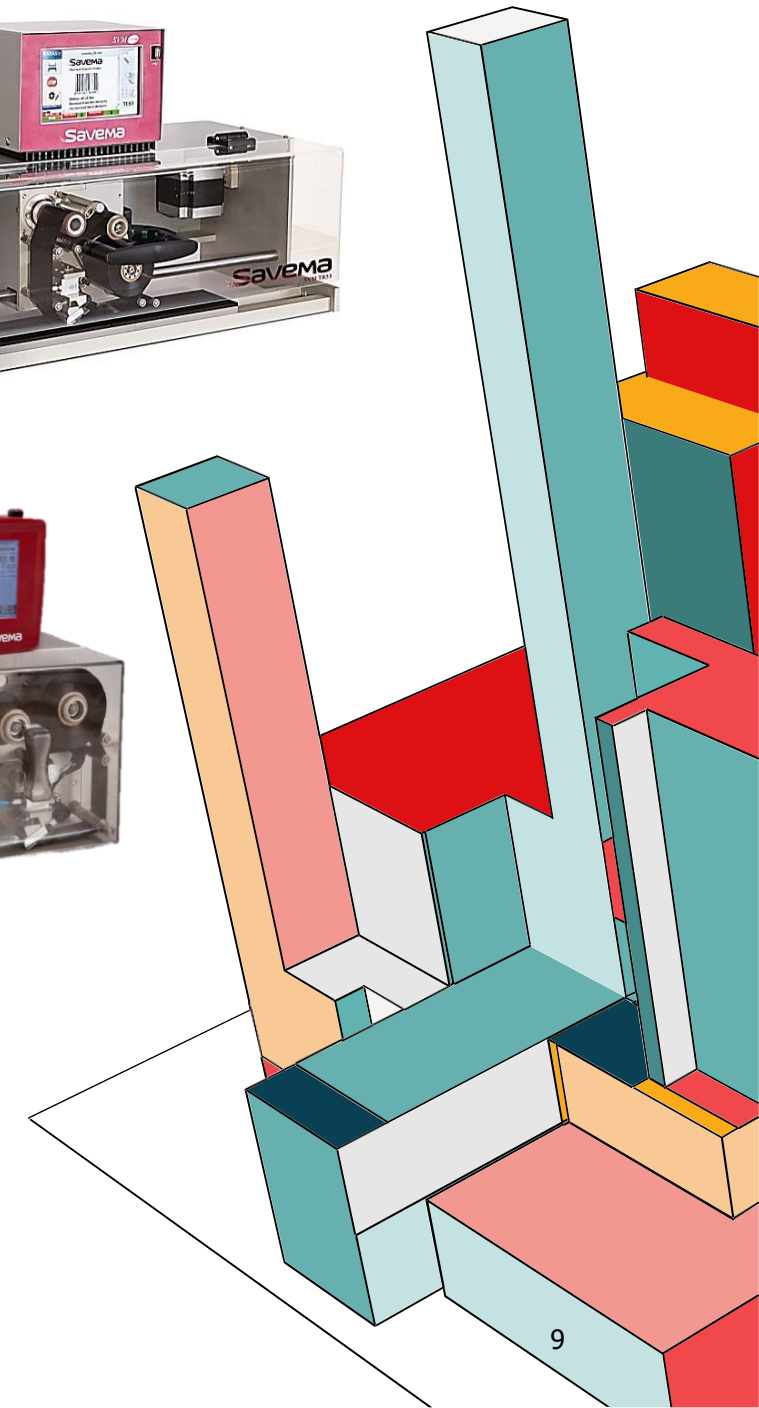
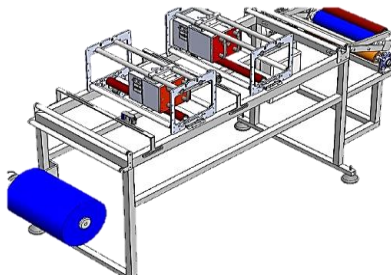
### #Authentic

- Our devices are uniquely crafted & precisely engineered 100% by SAVEMA Europe
- Ranges on : SVM 32 to 107 series (Continuous, Intermittent & Traverse System)

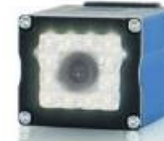
### #Unique

Armed with latest technology in coding&marking industry :

- Prints up to 600DPI Resolution
- Various model based on your manufacturing need
- Speed up to 500 prints/minute
- Patented longlife mechanical design
- Easy operation with SAYASIS-Windows (WYSIWYG)
- Control up to 8printer within single interfaces



# VISUAL INSPECTION & SENSORIC



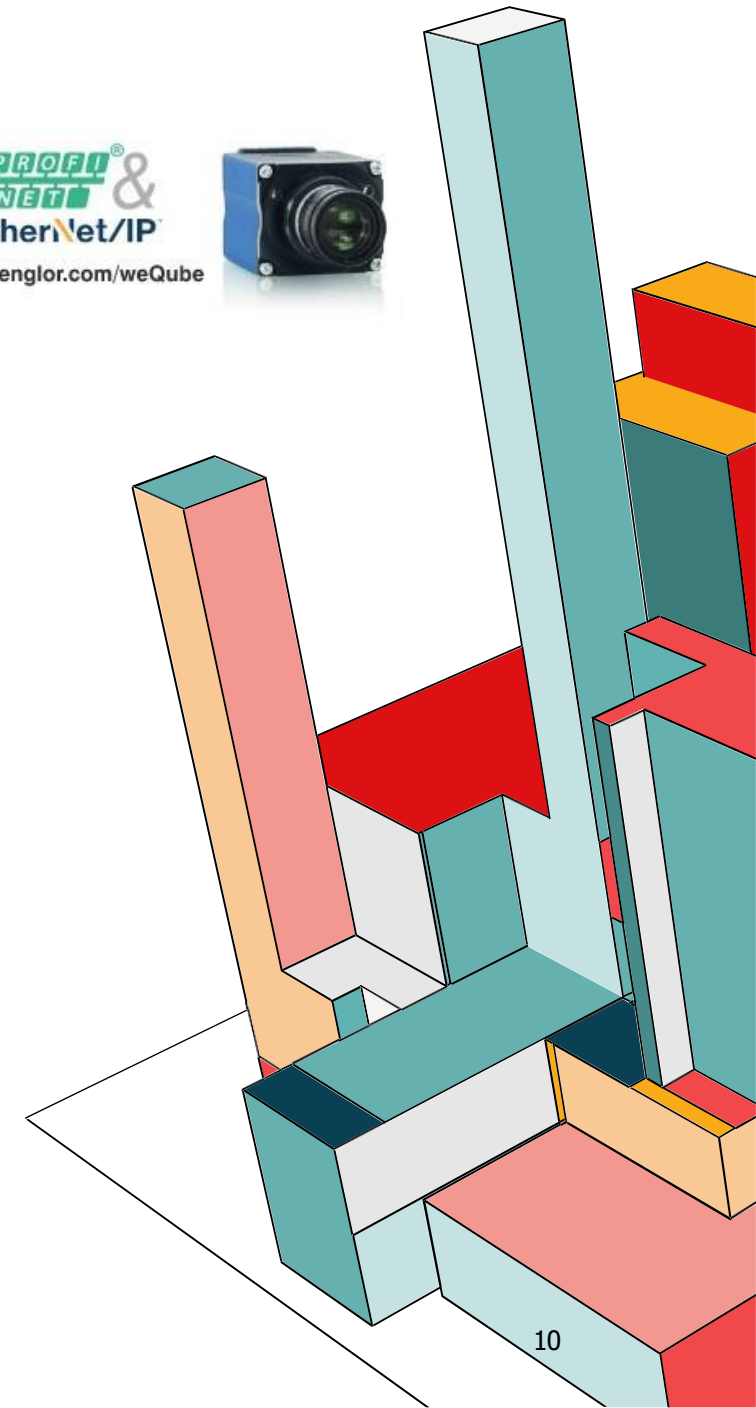
## #Authentic

- Our devices are uniquely crafted & precisely engineered 100% by WENGLOR Germany
- Ranges on : smartCamera, OCR Camera, 3D Visual Inspection.

## #Unique

weQube Smart & OCR Camera by WENGLOR, provides multicore technology vision sensor

- up to 736 x 480 pixel [CMOS image sensors](#)
- 15 Hz frame rate,
- 12 LED lights, autofocus,
- 3D tracking,
- equipped with communication interfaces: Ethernet, PROFINET, RS-232 dan FTP server.





## CCP INSTRUMENT & SOLUTIONS.



### #Authentic

- Our devices are uniquely crafted & precisely engineered 100% on Europe & Asia
- Ranges on : Metal Detector, Checkweigher, X-RAY, Color Sorter & Multisorting.

### #Unique

Armed with latest technology in CCP instrumentation industry:

- DSP Based inspection metal detector
- High speed weighing, realize 100% online checkweigher and ready to be integrated with vision system & coding solutions
- X-RAY within less-amount should be conformed to the standard of FDA(USA) and CE(EU), and the amount is controlled below 1uSv/h(USA:5uSv/h,EU:1uSv/h).



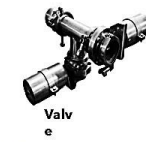
Flipper



Flap



Heavy Rejector



Valve



Air jet



Pusher



Pneumatic Retracting Band



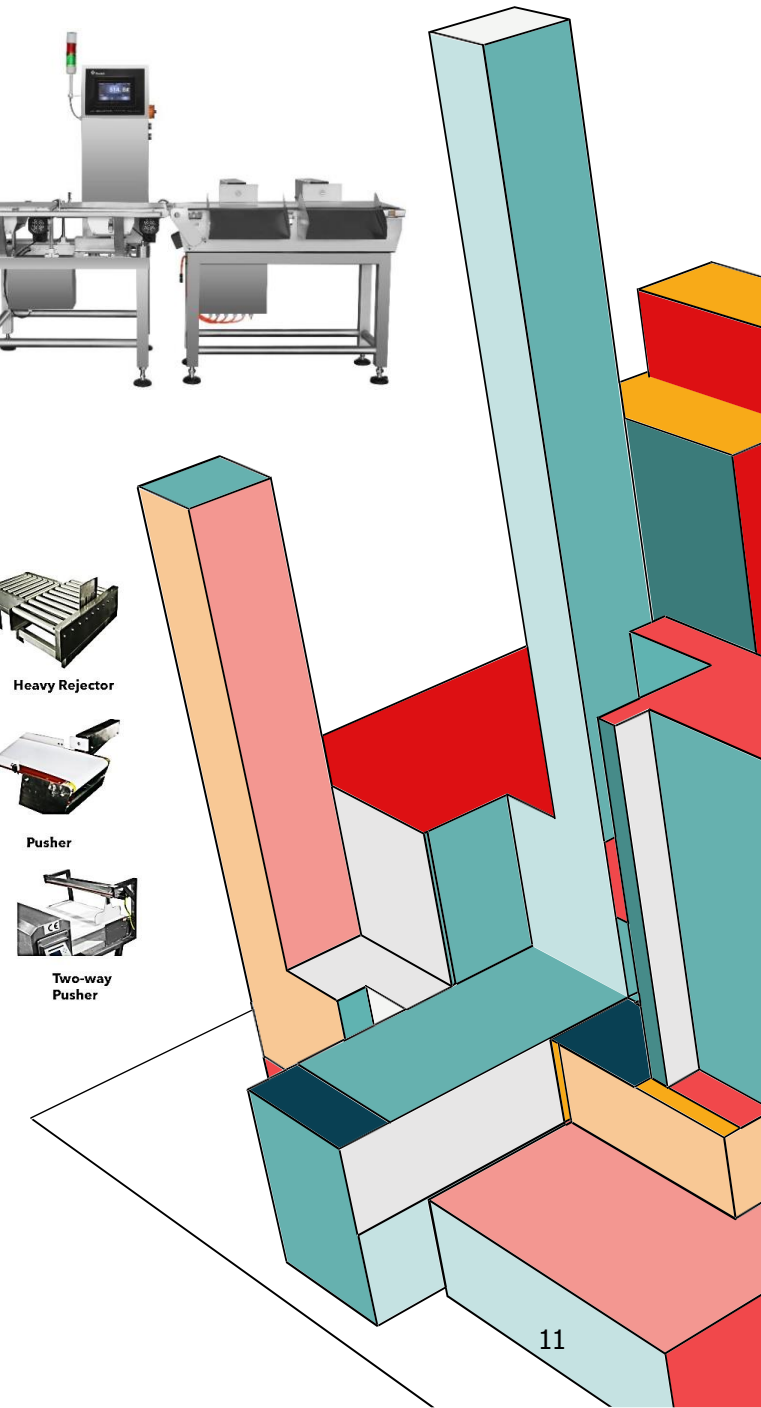
Rejecter for Gravity Metal Detector



Partial Belt Flap Rejector



Two-way Pusher





## More freedom in coding



Font / Lines	Print sample
m5	ABCDEFGH 1234567890
m7x5	ABCDEFGH 1234567890
m23	ABCDEFGH 1234567890
m32x24	ABCDEFGH 1234567890
a7x5	ABCDEFGH 1234567890
a9x5	ABCDEFGH 1234567890
a9x6	ABCDEFGH 1234567890
Arial 24	ABCDEFGH 1234567890
Arial 32	ABCDEFGH 1234567890
ocr 11x7	ABCDEFGH 1234567890
2-lines m5	ABCDEFGH 1234567890 ABCDEFGH 1234567890
2-lines m7x5	ABCDEFGH 1234567890 ABCDEFGH 1234567890
2-lines m15	ABCDEFGH 1234567890 ABCDEFGH 1234567890
4-lines m7x5	ABCDEFGH 1234567890 ABCDEFGH 1234567890 ABCDEFGH 1234567890 ABCDEFGH 1234567890

[Print samples](#)

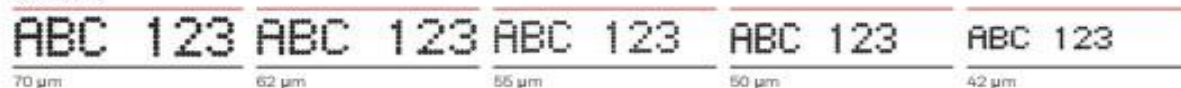
Barcodes / 1D codes



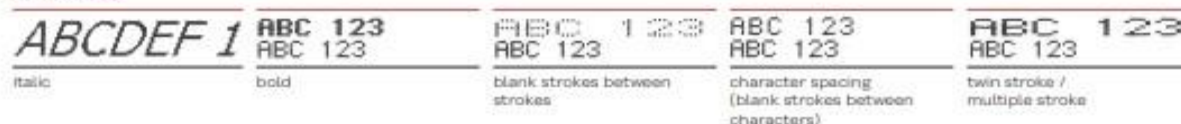
## 2D codes



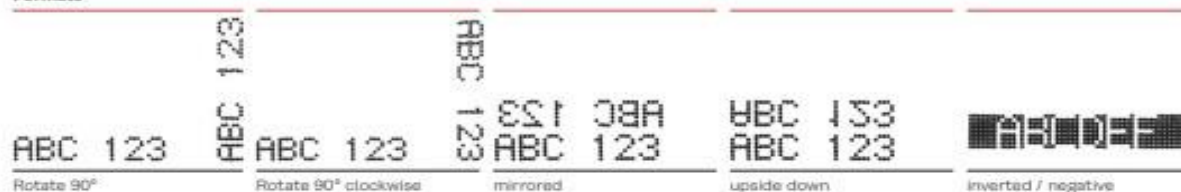
## Nozzle size



### Text variants



### Formats



## Tower fonts



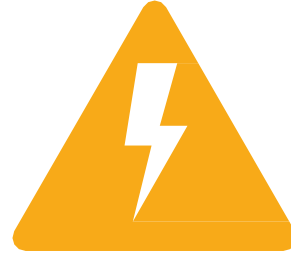
## Languages



## Logos



## TECH & SAFETY



- Safetyflip design

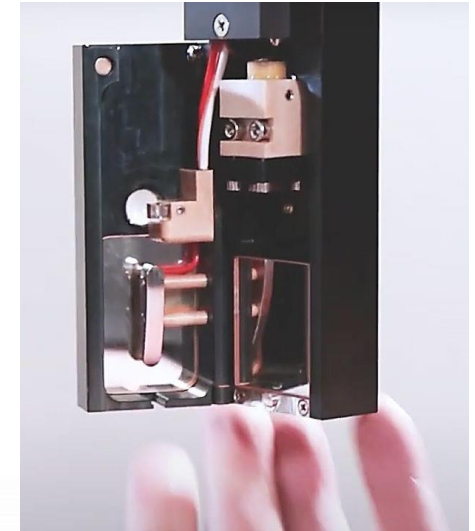
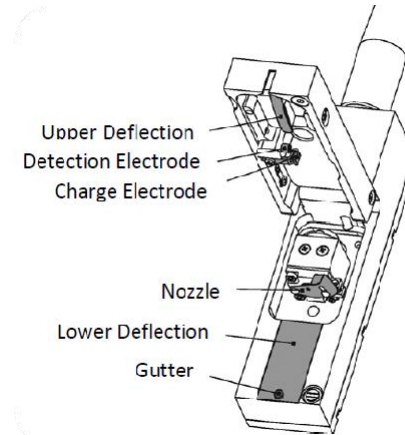
A safety-door like design with magnetic click ensure there's no charging on printhead when opens.

- Simple surfaces design

To ensure less usage of chemical when cleaning chemicals.

### #LESS-SOLVENT

Wipes only, no need to burst flood the cleaning chemicals on printhead.



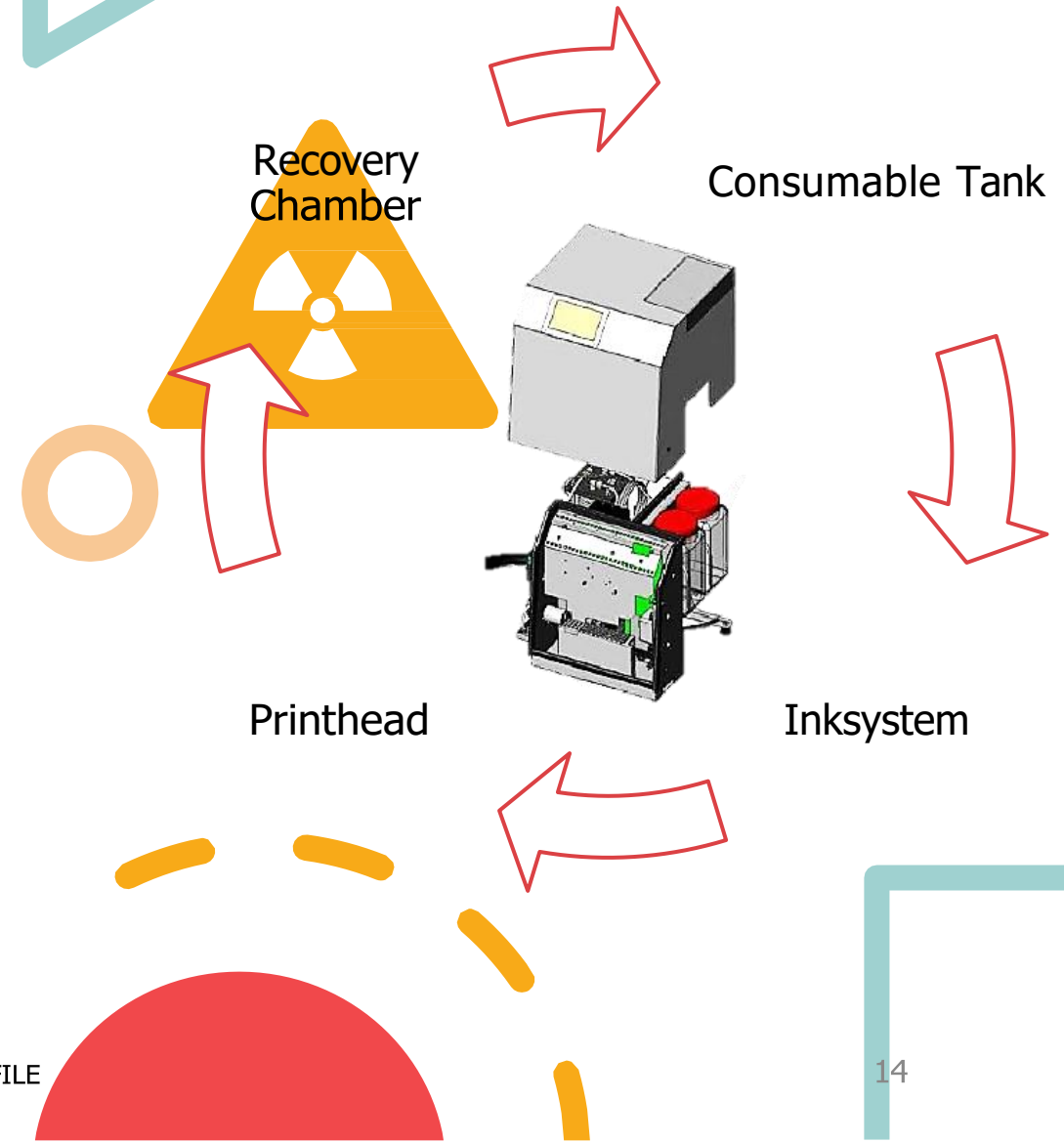


# SAFETY



## Solvent Recovery System

- Odorless when neither standby nor used. Made for mankind friendly operation.
- Operate safely without harmful chemical exposure.
- Supports up to ISO 14000 & ISO 22000\*\*\*





# SUMMARY

“ Kami percaya bahwa pembelajaran adaptasi baik dari sisi teknologi maupun SDM yang diiringi dengan semangat bergandengan tangan akan menghantarkan kita kepada pencapaian visi yang lebih besar ”.

Hanjaya

Founder , Board of Commissioner PT. Hantech  
Jaya Mandiri



# THANK YOU

For any further information :

Contact Person: Billy Jaya

Mobile : 0813 3035 3435

Address : Tanrise Southgate B12 Sidoarjo

[Email : trium-billy@b1jetprint.com](mailto:trium-billy@b1jetprint.com)