



JIUZHOU METAL
PRODUCTS (SHANDONG) CO., LTD.



JIUZHOU METAL
PRODUCTS (SHANDONG) CO., LTD.

—
Stainless Steel
Carbon Steel
Galvanized
Color Coating
Alloy Steel
NM Plates

**JIUZHOU
METAL**

✉ E-mail: info@jiuzhoumetal.com

☎ Tel: 0086 0531-86888888

☎ Phone: 0086 159 6666 9999

🌐 www.jiuzhou-metal.com

📍 Address: Building No.7, Huazhi Wanxiang Tiandi,
Lixia District, Jinan city, Shandong Province, China

Jinan • Shandong • China

info@jiuzhoumetal.com ✉

0086 0531-86888888 ☎

0086 159 6666 9999 ☎

www.jiuzhou-metal.com 🌐

PRODUCT CATALOG

A professional manufacturer of steel



01 About Jiuzhou	03	05 PPGI & PPGL	23
Company Profile	03	PPGI & PPGL Plate	25
Certificate Of Honor	04	PPGI & PPGL Coil	26
02 Stainless Steel	05	06 Alloy Steel	27
Stainless Steel Plate	07	Alloy Steel	28
Stainless Steel Coil	08	07 NM Plates	29
Stainless Steel Pipe	09	NM Plates	30
Stainless Steel Bar	10	08 Customers & Cases	31
03 Carbon Steel	11	Our Customers	31
Carbon Steel Plate	13	Project Cases	32
Carbon Steel Coil	14		
Carbon Steel Pipe	15		
Carbon Steel Bar	16		
Carbon Steel Wire	17		
04 Galvanized Steel	19		
Galvanized Steel Plate	21		
Galvanized Steel Coil	22		

SERVING SOCIETY LOOKING GLOBALLY



- **24 Hours Online Service**
 - Quick response
 - Timely delivery (we cherish each other's time.)
- **24 Hours After-sales Service**

If you have any questions, please contact us by email or trade manager. Most emails are answered within 12 working hours.
- **100% Responsible For Quality**

We guarantee that all our projects are as stated in the productdescription.We will try our best to meet your requirements.



ABOUT JIUZHOU



Jiuzhou Metal Products (Shandong) Co., Ltd.

Jiuzhou Metal Products (Shandong) Co., Ltd. (for short as "Jiuzhou Metal") is an international and professional supplier of steel and non-ferrous metal raw materials. we committed to providing reliable and satisfactory customized supply solutions for steel and metal products to global users.

As early as 2002, Jiuzhou Metal has been active in the domestic steel market and is the designated supplier of CNOOC, CNNC and CSCEC . After more than ten years of experience accumulation and the continuous growth of international customer demand, Jiuzhou Metal has begun to serve global users since 2013.

As a one-stop supplier of steel and metal raw materials, Jiuzhou Metal has become the preferred steel supplier for tens of thousands of customers around the world with its strong supply chain network, solid professional knowledge and reliable services. And our customers are from Europe, the Middle East, South America, More than 110 countries.



Security
Label



Support
Customization



Professional
Team



Support
Inspection



After Sales
Guarantee



Quality
Assurance



10⁺

Production And
Warehousing Base

80000⁺

Serving Customer

100⁺

Sales Country



JIUZHOU MISSION

Supply higher quality materials to build a better world

JIUZHOU VISION

Becoming a global supplier of steel raw materials

JIUZHOU VALUES

Guided by customer needs and winning the future with integrity

JIUZHOU SPIRIT

Unity, resilience, progress, pragmatism, and innovation



STAINLESS STEEL

Stainless steel is the abbreviation for stainless steel and acid resistant steel. Steel that is resistant to weak corrosive media such as air, steam, water, or has rust resistance is called stainless steel.

Stainless steels are generally grouped into 5 different classes. Each is identified by the alloying elements which affect their micro-structure and for which each is named.

- Martensitic Stainless Steels
- Ferritic Stainless Steels
- Austenitic Stainless Steels
- Duplex Stainless Steels
- Precipitation-Hardening Stainless Steels

COMMON GRADES OF STAINLESS STEEL

Austenitic Stainless Steel	201/202/301/302/303/304/304L/305/309S/310S/316/316L/316Ti/316L/317/317L/321/330/347 etc.
Ferritic Stainless Steel	405/409/430/434/444 etc.
Martensitic Stainless Steel	403/410/410/440A etc.
Duplex Stainless Steel	329/2205/2304/2507/2750 etc.

STAINLESS STEEL SURFACE SELECTION



2B



8K



1D



Hairline



No.1/#1/2D/2E



BA



No.4/#4/Satin




DN-2

STAINLESS STEEL APPLICATION


- Automotive And Transportation
- Medical Technology
- Building Trade
- Aircraft Construction
- Food And The Catering Industry
- Tanker Manufacture
- Vessel Manufacture

STAINLESS STEEL PLATE

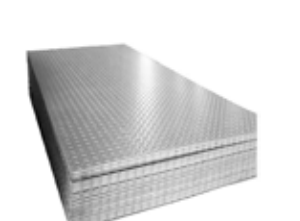




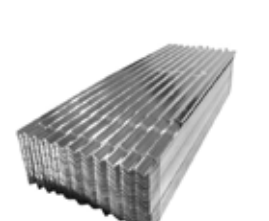
Stainless Steel Plate



Stainless Steel Sheet



Stainless Steel Checker Plate




Stainless Steel Corrugated Sheet


Thickness	0.3mm-200mm or Customized
Width	100-1500mm or Customized (Common: 2000mm/2438mm/3000mm / 5800mm/6000mm/12000mm)
Length	100-9000mm or Customized (Common: 1000mm/1219mm/1500mm/1800mm/2000mm/2500mm/3000mm)
Standard	AISI, ASTM, GB, BS, EN, JIS, DIN etc.
Surface	2B, 2D, BA(bright annealed), No.1, No.4 4K, 6K, 8K, HL(Hair Line), etc.
Certificate	ISO / SGS / BV etc.

STAINLESS STEEL COIL







Stainless Steel Coil



Cold Rolled Stainless Steel Coil



Hot Rolled Stainless Steel Coil

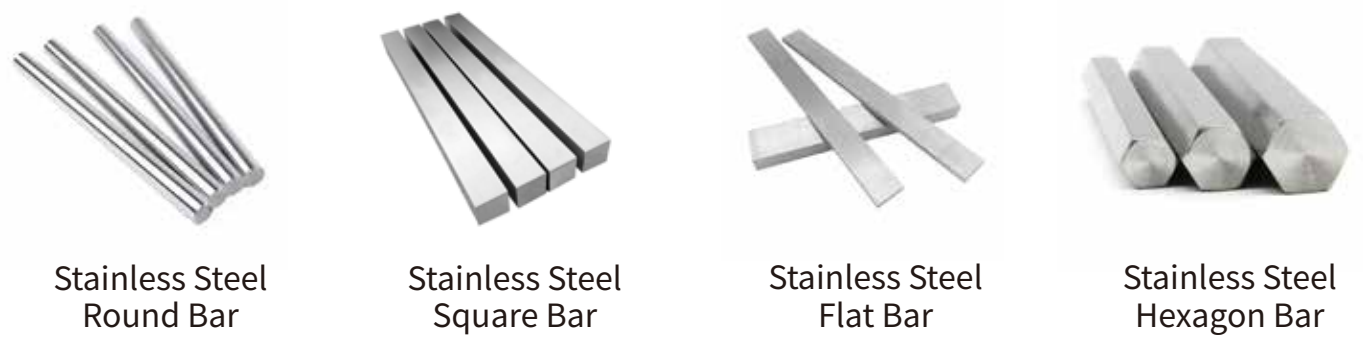


Stainless Steel Strip

Thickness	2.5mm-10.0mm or Customized
Coil ID	508mm / 610 mm
Length	As required (Common: 2000mm/2440mm/3000mm 5800mm/6000mm etc.)
Standard	AISI, ASTM, GB, BS, EN, JIS, DIN etc.
Surface	2B, 2D, BA(bright annealed), No.1, No.4 4K, 6K, 8K, HL(Hair Line), etc.
Certificate	ISO / SGS / BV etc.



Outside Diameter	Round Tube: 4-200mm / Square Tube: 10*10-100*100mm Rectangular Tube: 10*20mm-50*100mm
Wall Thickness	0.6mm-6.0mm
Length	1-6m or Customized
Standard	AISI, ASTM, GB, BS, EN, JIS, DIN etc.
Surface	Black, Glossy Polishing, Rough Turning, Matte Surface Treatment, No.4, Ba, Etc
Certificate	ISO / SGS / BV etc.



Outside Diameter	Round Rod: 4mm-500mm / Square Bar: 18mm-47mm
Outside Diameter	Hexagonal Bar: 18-57mm / Flat Steel: Tickness 2-150mm
Length	1-6m or Customized
Standard	AISI, ASTM, GB, BS, EN, JIS, DIN etc.
Surface	Black, Glossy Polishing, Rough Turning, Matte Surface Treatment, No.4, Ba, Etc
Certificate	ISO / SGS / BV etc.



CARBON STEEL

Carbon steel is a common type of steel that is an alloy of iron and carbon. It has a higher carbon content, lower melting point and greater durability compared to stainless steel.

Hot rolling is a mill process which involves rolling the steel at a high temperature (typically at a temperature over 1700° F), which is above the steel's recrystallization temperature.

Cold rolled steel is essentially hot rolled steel that has had further processing. The steel is processed further in cold reduction mills, where the material is cooled (at room temperature) followed by annealing and/or tempering rolling. This process will produce steel with closer dimensional tolerances and a wider range of surface finishes.

COMMON GRADES OF CARBON STEEL

Plate&Coil Common Grade	A36/S235JR/A283/A514/A572/S355JR/A709 A285/A387/A515/A516/A533/A537/A588 etc.
Pipe Common Grade	A53/A106/API Spec 5L/API 5CT/A179/A192/A213 A252/A333/A335/SSAW/LSAW/ERW etc.
Bar Common Grade	A36/A572/S355JR/A105/1018/1025/1045 C45/ 4130/4140/EN8/EN9/A615/HPB300/HRB500 etc.
Pressure Vessel Steel	A202/A204/A285/A387/A515/A516/A533/A537 etc.
Alloy Structural Steel	1330/1335/1340/1341/1345/5130/5135/5140 5145/4135/4137/4140/4142 etc.

CARBON STEEL CLASSIFICATION

The overarching category of carbon steel can be additionally divided into five categories:

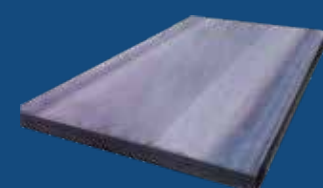
- Ultra-low-carbon steels: carbon content less than 0.015%;
- Extra-low-carbon steels: between 0.015% and 0.05% carbon;
- Low-carbon steels: between 0.05% and 0.19% carbon;
- Medium-carbon steels: between 0.2% and 0.49% carbon;
- High-carbon steels: a carbon content over 0.5%.

CARBON STEEL APPLICATION

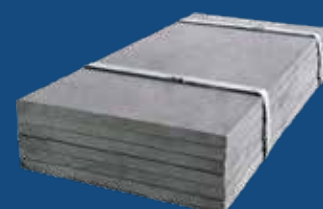
- Carbon steel is used to construct buildings, bridges, and other infrastructure projects.
- It is also used in producing pipes, fittings, and other components for the oil and gas industry.
- Carbon steel is an essential material in the automotive industry, where it is used to make parts such as engine blocks, transmission components, and suspension parts.
- It is also utilized in the production of railway tracks and locomotives.
- It is also used in shipbuilding yards.



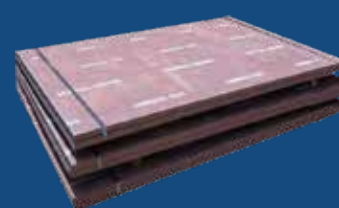
Thickness	0.1mm-400mm
Width	100mm-3000mm
Length	1m-12m
Standard	AISI, ASTM, GB, BS, EN, JIS, DIN etc.
Delivery Conditions	Rolling, Annealing, Quenching, Tempering Or Standard
Production Process	Hot Rolled / Cold Rolled



Manganese Plate



Pressure Vessel Plate



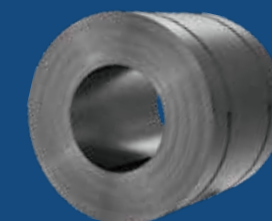
Wearing Plate

Carbon steel plate mainly refers to the steel with carbon mass fraction less than 2.11% and does not contain specially added alloy elements.

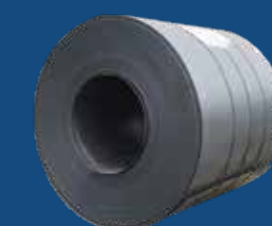
According to the use, carbon steel can be divided into three categories: carbon structural steel, carbon tool steel and free cutting structural steel.



Carbon Steel Strip



Hot Rolled Steel Coil



Cold Rolled Steel Coil

Thickness	Hot Rolling: 2.75mm-100mm Cold Rolling: 0.2mm-3mm
Width	45mm-2200mm
Length	Support Customization
Standard	AISI, ASTM, GB, BS, EN, JIS, DIN etc.
Delivery Conditions	Rolling, Annealing, Quenching, Tempering Or Standard
Production Process	Hot Rolled / Cold Rolled

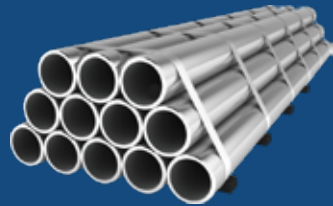
The use of coils generally has more advantage than the use of steel sheets, as means of improving yield ratio and automating line production. Coil is the material from which sheet is cut, and possesses characteristics which differs from those of a sheet. Thus effective use of coil improves productivity.



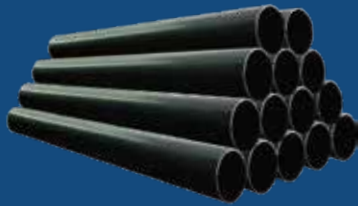
CARBON STEEL PIPE

Shape	Round Tube/Square Tube Rectangular Tube/Hexagonal Tube
Outside Diameter	Seamless: 1/4 "-36" Welding: 21.3mm-3620mm Round Tube: 1/2 "-10" Square/Rectangular Tube: 15x15-400x600mm
Wall Thickness	Seamless: 1.25mm-50mm Welding: 1.65mm-65mm
Length	1m-12m or Customized
Surface Technology	Galvanized, Bright, Polished, Black etc.
Other Services	Mechanical Processing (Cnc), Centerless Grinding (Cg), Heat Treatment, Annealing, Pickling, Polishing, Rolling, Forging, Cutting, Bending, Small-Scale Processing etc.

Carbon steel pipes are made by hot rolling, cold rolling, or cold drawing. Carbon steel pipes play an important role in China's steel pipe industry.



Galvanized Pipe



Carbon Steel Seamless Pipe



Carbon Steel Welded Pipe (SSAW/LSAW/ERW)

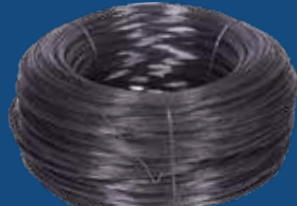


CARBON STEEL BAR

Shape	Round Bar/Square Bar Hexagonal Bar/Flat Steel
Diameter (mm)	Hot Rolled Round Bars: 25-600 Cold Rolled Round Bars: 6-101.6 Cold Rolled Square Bar: 6-50.8 Hot Rolled Square Bars: 21-54 Cold Rolled Hexagonal Bar: 9.5-65 Forged Steel Bars: 200-1000
Common Specifications	Round Rod: 3.0-50.8 Mm, Over 50.8-300mm Flat Steel: 6.35x12.7mm, 6.35x25.4mm Hexagonal Bar: Af 5.8mm-17mm Square Bar: Af 2mm-14mm, Af 6.35mm
Length	1m-12m or Customized
Surface Technology	Galvanized, Bright, Polished, Black etc.
Other Services	Mechanical Processing (Cnc), Centerless Grinding (Cg), Heat Treatment, Annealing, Pickling, Polishing, Rolling, Forging, Cutting, Bending, Small-Scale Processing etc.



Carbon Steel Bar



Wire Rod



Rebar Steel



Diameter	0.2mm-6mm
Material	A36, SS400, A283, S235JR, S235J2 S275JR,S 275J0, E295, SS490 SS540, S355J2W, 1018, 1006, 1008 ASTM A510, etc.
Surface	Smooth, Straight, Bright, No Blur On Both Ends
Length	Customized according to your needs
Tensile Strength	350-550MPA
Processing Technique	Heat treatment facilities for hot-rolled, controlled rolling,normalizing, Annealing, tempering, quenching, normalizing plus tempering, quenching and tempering, Other delivery states are available as customers' requirement

Steel wire is one of the four major varieties of steel: plate, tube, profile and wire. It is a reprocessed product made of hot-rolled wire rod by cold drawing.

Low Carbon Bright Alkaline Steel Wire: Low carbon steel wire is also known as iron wire. The composition of iron wire varies according to different uses. The ingredients it contains are: iron, cobalt, nickel, copper, carbon, zinc, and other elements. The carbon content of low carbon bright alkaline steel wire ranges from 0.06 to 0.20 percent, but the most commonly used grades are 1008 (0.08 percent carbon) and 1018 (0.18 percent carbon). Low-carbon bright alkaline steel wire is most often supplied in a "drawn" or "hard drawn" state, but can also be supplied in a bright annealed state according to special requirements.

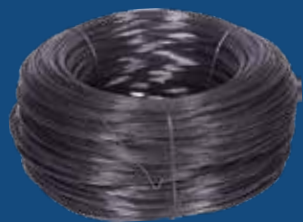
High Carbon Spring Tempering Steel Wire: High carbon steel is used to make spring tempered carbon steel wire. They are specified and manufactured according to performance criteria specific to their primary end use, I .e., the manufacture of coil springs. These performance standards allow a range of carbon content, but there are other factors, such as tensile strength and bending/winding tests must be met within the specified range.

Steel Wire Application

Medical Instruments: Needle holders, forceps, and even orthodontic wires are made from high-quality steel wire, ensuring precision and strength in medical procedures.

Wire Balustrades: Steel wire balustrades have become increasingly popular in modern architecture and interior design.

Greenhouse Structures: Steel wire plays a crucial role in supporting greenhouse structures. Its strength and durability are essential for withstanding the elements and supporting the weight of plants, offering an innovative solution for modern agriculture.



Low Carbon Bright Alkaline Steel Wire



High Carbon Spring Tempering Steel Wire



Steel Wires



GALVANIZED STEEL

Galvanized steel consists of a piece of steel cleaned and dipped into molten zinc. The zinc then hardens onto the steel, creating an extra protective coating. This helps the steel stand up to rust, corrosion, nicks, and dents.

Galvalume is comprised of a steel sheet dipped in a coating of 55% aluminum, 43.4% zinc, and 1.6% silicone. The unique coating gives the steel greater protection from the elements, which allows it to outlast traditional galvanized steel.

The main difference between Galvalume and galvanized steel is the protective coating around each steel sheet. Galvanized steel consists of zinc, while Galvalume's coat consist of zinc, aluminum, and silicone.

COMMON GRADES OF GALVANIZED STEEL

Galvanized Steel	DX51D+Z/DX52D+Z/DX53D+Z/DX54D+Z/DX56D+Z SGCC/SGCD1/SGCD2/SGCD3/SGCD4/SGC340 S220GD+Z/S250GD+Z/S280GD+Z/S320GD+Z etc.
Galvalume Steel	DX51D+ZM,AZ,AM/DX52D+ZM,AZ,AM/DX53D+ZM,AZ,AM DX54D+ZM,AZ,AM/S220GD+ZM,AM/S250GD+ZM,AZ,AM S280GD+ZM,AM/S300GD+AZ,AM/S320GD+ZM,AM S350GD+ZM,AZ,AM/S450GD+AZ,AM etc.

GALVANIZED STEEL SURFACE



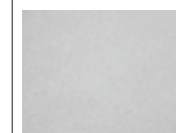
Minimized Spangle (Small)

The zinc layer(coating) does Not contain Lead(Pb), which complies with EU WEEE and RoHS directives. This is a non-toxic and environmental friendly material.



Normal Spangle (Regular)

Through addition of certain heavy metal element into molten zinc bath, regular spangle pattern is produced on Hot-dip zinc-coated steel sheet.



Spangle-free (Zero)

Only a certain amount of aluminum is added to the zinc solution, and lead-free, antimony, and tin are not added to produce spangle-free products.



Big Spangle (Large)

Spangles with a diameter greater than 3mm that can be distinguished by the naked eye are called large spangles.

CLASSIFICATION OF GALVANIZED STEEL

• Hot-Dip Galvanizing

Hot-dipped galvanized steel is dipped into a vat of molten zinc, which coats the steel. The galvanized steel is removed and allowed to cool.

• Electro Galvanizing

Electro-galvanized steel is a plating process where the steel is placed in an electrically charged solution of zinc and saline.

GALVANIZED STEEL APPLICATION

- Construction: Roofing Sheets, Interior And Exterior Wall Panels, Door Panels etc.
- Home Appliances: Water Heaters, Refrigerators, Microwave Ovens, Switch Cabinetse etc.
- Transportation: Decks Of Trains Or Ships, Containers, Road Signs, Isolation Fence etc.
- Light Industry: Chimney Pipes, Door Panels, Corrugated Roofing Sheetss etc.



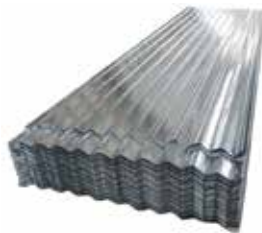
Thickness	0.12mm-6.00mm or Customized As Required
Width	600mm-1500mm or Customized As Required
Length	1-12m or Customized As Required
Zinc Coating	20-275 g/m ²
Alu-Zinc Coating	30-275 g/m ²
Galvalume	Aluminum (Al) 55% / Zinc (Zn) 43.5% / Silicon (Si) 1.5%
Surface	Bared / Checkered / Coated / Painted
Processing	Bending/Welding/Punching/Cutting/Threading Grooved/Shoulered



Plate



Checker Plate



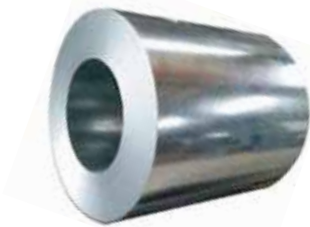
Corrugated Plate



Roofing Sheet



Thickness	0.12mm-3.5mm or Customized As Required
Coil ID	508mm / 610 mm
Width	600mm-1500mm or Customized As Required
Zinc Coating	20-275 g/m ²
Alu-Zinc Coating	30-275 g/m ²
Galvalume	Aluminum (Al) 55% / Zinc (Zn) 43.5% / Silicon (Si) 1.5%
Surface	Bared / Checkered / Coated / Painted
Processing	Bending/Welding/Punching/Cutting/Threading Grooved/Shoulered



Coil



Checker Coil



Coated Coil



Galvanized Strip



PPGI& PPGL

PPGI

The product obtained by coating the organic coating on the hot-dip galvanized steel plate is the hot-dip galvanized color coated plate. In addition to the protection of zinc, the organic coating on the surface of the hot-dip galvanized color coated plate also plays the role of isolation protection and rust prevention.

PPGL

The hot-dip aluminum zinc steel plate (55%al Zn) is used as the newly coated substrate, and the aluminum zinc content is usually 150g / m² (double-sided). The corrosion resistance of hot-dip aluminized zinc sheet is 2-5 times that of hot-dip galvanized sheet. It is an ideal building material to save energy.



DIFFERENT BETWEEN PPGI & PPGL

- **PPGI: Pre-painted galvanized steel**

PPGI uses galvanized sheets (with a layer of zinc coating) as base metal.

- **PPGL: Pre-painted galvalume steel**

PPGL is with galvalume sheet as substrate, which is coated with 55% aluminum, 43.3% zinc, and 1.6% silicon.

CATEGORY AND FILM THICKNESS OF PRIMERS

- **Epoxy Primer**

The epoxy primer has a strong adhesion to the base metal and good properties in water-proof, alkali-proof and chemical resistance.

- **Polyester Primer**

The epoxy primer has a strong adhesion to the base metal and good properties in water-proof.

- **Water-soluble Acrylic Acid Primer**

The primer of this kind has strong adhesion, excellent flexibility, lower organic solvent and low-temperature curing.

- **Polyurethane Primer**

The primer of this kind has excellent chemical resistance, durability and flexibility.

CATEGORY AND FILM THICKNESS OF PRIMERS

- **Polyester (PET)**

The finish coat of this kind has strong adhesive force, a variety of colors.

- **Silicon Modified Polyesters (SMP)**

The membrane of the finish coat of this kind has excellent rigidity, abrasion resistance.

- **High-Durability Polyester (HDP)**

The finish coat of this kind has excellent retention of color.

- **Polyvinylidene Fluoride (PVDF)**

The finish coat of this kind features in its excellent retention of color.





PPGI & PPGL COIL

- PPGI & PPGL

Thickness	0.13mm-0.8mm
Width	600mm-1250mm
Length	Support Customization
Color	According To Ral Color Card (Custom Patterns Can Be Provided)
Coating	PE/SMP/HDP/PVDF
Coating Thickness	Top: 10-30mic / Back: 5-25mic



We offer a variety of colors to choose from. The above are common colors. If you prefer other colors or patterns, please send us the RAL color code.

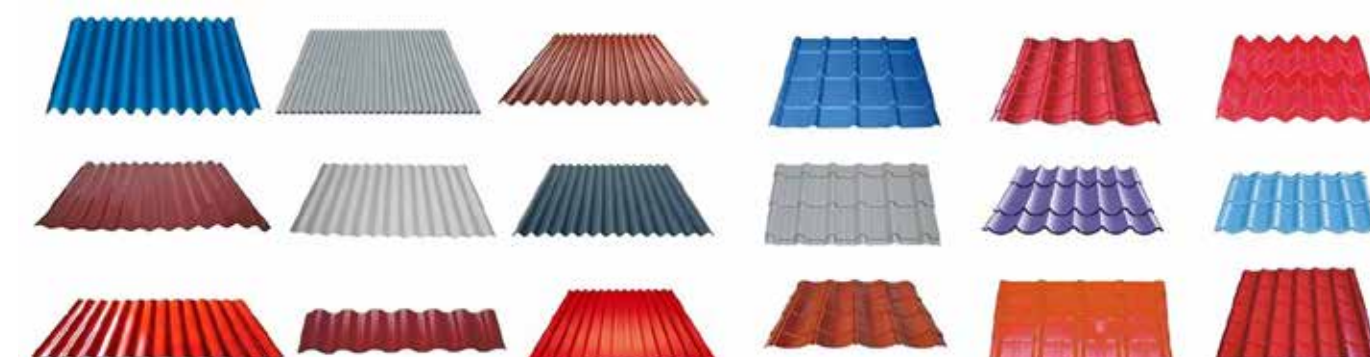


PPGI & PPGL PLATE

PPGI & PPGL -



Thickness	0.12mm-2.5mm or Customized As Required
Width	600mm-1500mm or Customized As Required
Length	1-12m or Customized As Required
Color	According To Ral Color Card (Custom Patterns Can Be Provided)
Coating	PE/SMP/HDP/PVDF
Coating Thickness	Top: 10-30mic / Back: 5-25mic



The color and specifications of the colored coated corrugated board support customization. We welcome you to send us the color code and the required size.



ALLOY STEEL

Incoloy is a type of alloy made from a combination of nickel, chromium, and iron. Superior corrosion and oxidation resistance at high temperatures. This makes them ideal for applications like furnaces, boilers, heat exchangers, and thermowells.

Inconel is a nickel-chromium-based super-alloy often utilized in extreme environments. Inconel alloys are typically used in high temperature applications.

Hastelloy typically containing high quantities of both molybdenum and chromium, it performs better in severely corrosive environments than other specialty metal products. The addition of molybdenum also increases the general workability.

COMMON GRADES OF ALLOY STEEL

INCOLOY Alloy	020 / 028 / 803 / 945 / 945X / 330 / 907 / 908 800 / 800H / 800HT / 825 / 901 / 925 / DS / MA956 etc.
INCONEL Alloy	600 / 617 / 625 / 690 / 718 / X-750 etc.
HASTELLOY Alloy	C-4 / C-22 / C-2000 / G-30 / G-35 / C-276 / Hastelloy X etc.
Product Category	Plate / Sheet / Coil / Pipe / Bar etc.
Standard	AISI, ASTM, GB, BS, EN, JIS, DIN etc.
Surface	2B, 2D, BA(bright annealed), No.1, No.4 4K, 6K, 8K, HL(Hair Line), etc.
Certificate	ISO / SGS / BV etc.

ALLOY STEEL PRODUCTS



Plates



Coils



Pipes



Bars





NM PLATES

The series of NM wear-resistant steel combined the properties including high strength, high hardness, high wear resistant, weldable, bendable and mainly applied in:

- Edge of loaders in loader industry
- Wear-resistant lining plate in crusher industry.
- Slat type conveyor in colliery mechanical industry.
- Lining plate of coal pulverizer in power industry.
- Lining plate of hopper for heavy handling truck.

CHEMICAL COMPOSITION OF NM PLATES

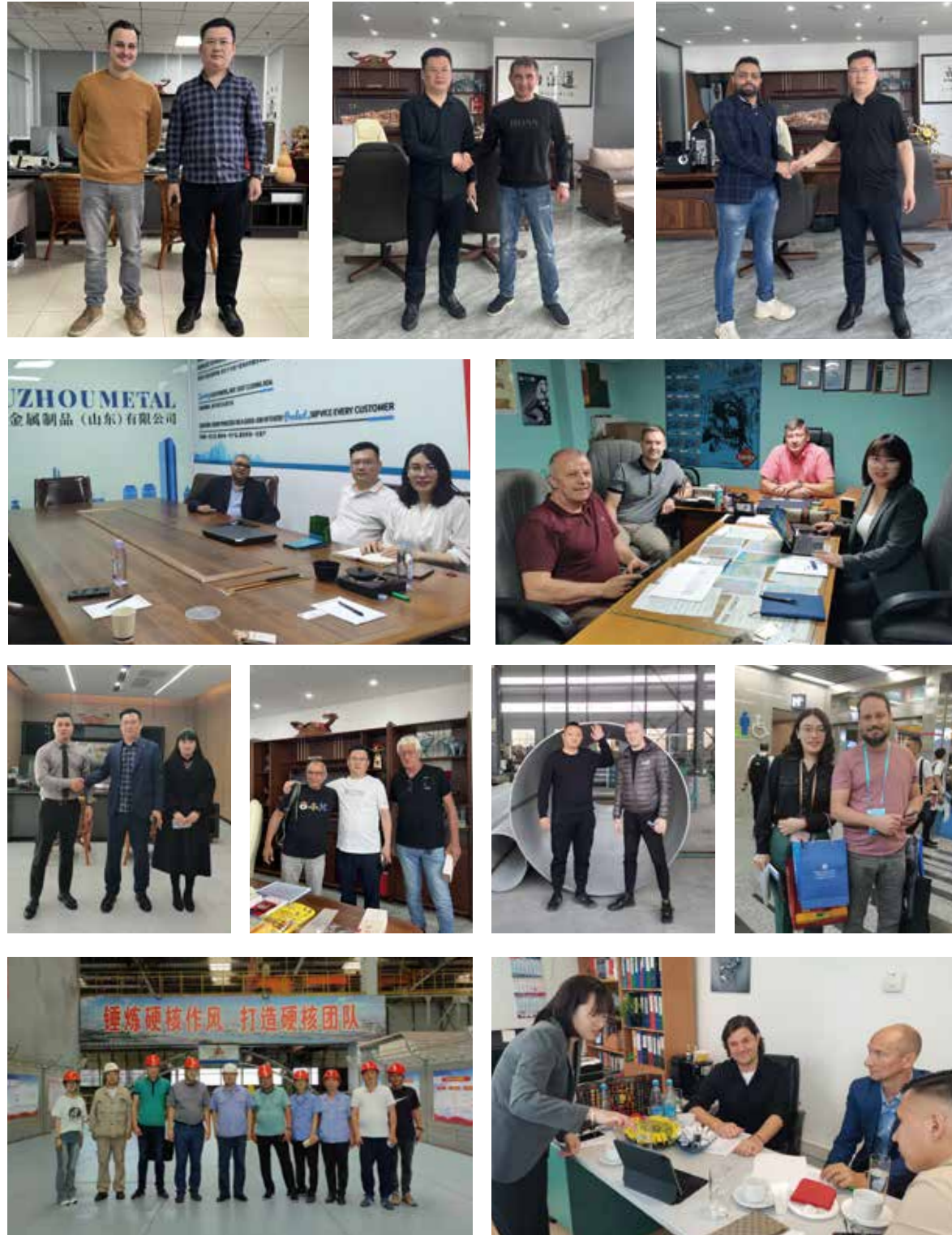
Brand	C	Si	Mn	P	S	Cr	Mo	Ni	B
NM360	≤0.17	≤0.50	≤1.5	≤0.025	≤0.015	≤0.70	≤0.40	≤0.50	≤0.005
NM400	≤0.24	≤0.50	≤1.6	≤0.025	≤0.015	0.4~0.8	0.2~0.5	0.2~0.5	≤0.005
NM450	≤0.26	≤0.70	≤1.6	≤0.025	≤0.015	≤1.50	≤0.05	≤1.0	≤0.004
NM500	≤0.38	≤0.70	≤1.7	≤0.020	≤0.010	≤1.20	≤0.65	≤1.0	^{Bt:} 0.005-0.06

MECHANICAL PROPERTY OF NM PLATES

Brand	Thickness(mm)	YS Rel MPa	TS Rm MPa	Elongation	%Hardness
NM360	10-50	≥620	725-900	≥16	320-400
NM400	10-50	≥620	725-900	≥16	380-460
NM450	10-50	1250-1370	1330-1600	≥20	410-490
NM500	10-50	/	/	≥24	480-525

NM plates is one kind of Chinese wear/abrasion resistant steel plates, which is well received in middle east and Africa. An NM wear-resistant steel was hot rolled and then the plates were heat-treated by direct quenching and tempering and reheat quenching and tempering techniques, respectively. With high mechanical strength, NM plates is 3 times to 5 times more than common low-alloy steel plates which can significantly improve surface hardness, usually achieved 320 ~ 525HB.

OUR CUSTOMERS



PROJECT CASES



Chicken processing line - Turkey



Customer warehouse in Indonesia



Milk production line



Oil tank project -UAE



Uganda Sindlia and Nudgudu
water power sation



Other Cases